

U.S. PUBLIC LAND SURVEY MONUMENT RECORD

ROMPORTL #21602360020

HISTORY OF CORNER ESTABLISHMENT SINCE THE ORIGINAL GOVERNMENT SURVEY
SEE PREVIOUS TIE SHEET.

DESCRIPTION OF CORNER EVIDENCE FOUND

FOUND AND ACCEPTED HARRISON MONUMENT AS SET BY GARY DECHANT, VERIFIED EXISTING TIES AND TOOK NEW TIES AS SHOWN.

CREW/WITNESS FOR CORNER LOCATION
-CHRISTIAN J. RUNNING
-

FIELD WORK COMPLETED 10/10/2023

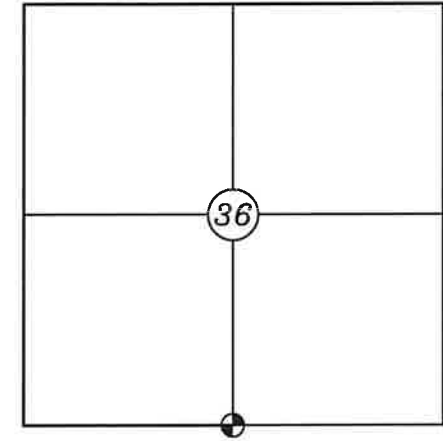
I, CHRISTIAN J. RUNNING RLS 2558, HEREBY CERTIFY THAT THE COORDINATES PROVIDED ON THIS RECORD WERE DETERMINED BY ME OR UNDER MY DIRECT SUPERVISION AND THAT THIS FORM IS CORRECT TO THE BEST OF MY KNOWLEDGE AND BELIEF.

CHRISTIAN J. RUNNING
PLS 2558
RUNNING LAND SURVEYING
700 DAUPHIN ST.
LA CROSSE, WI 54603

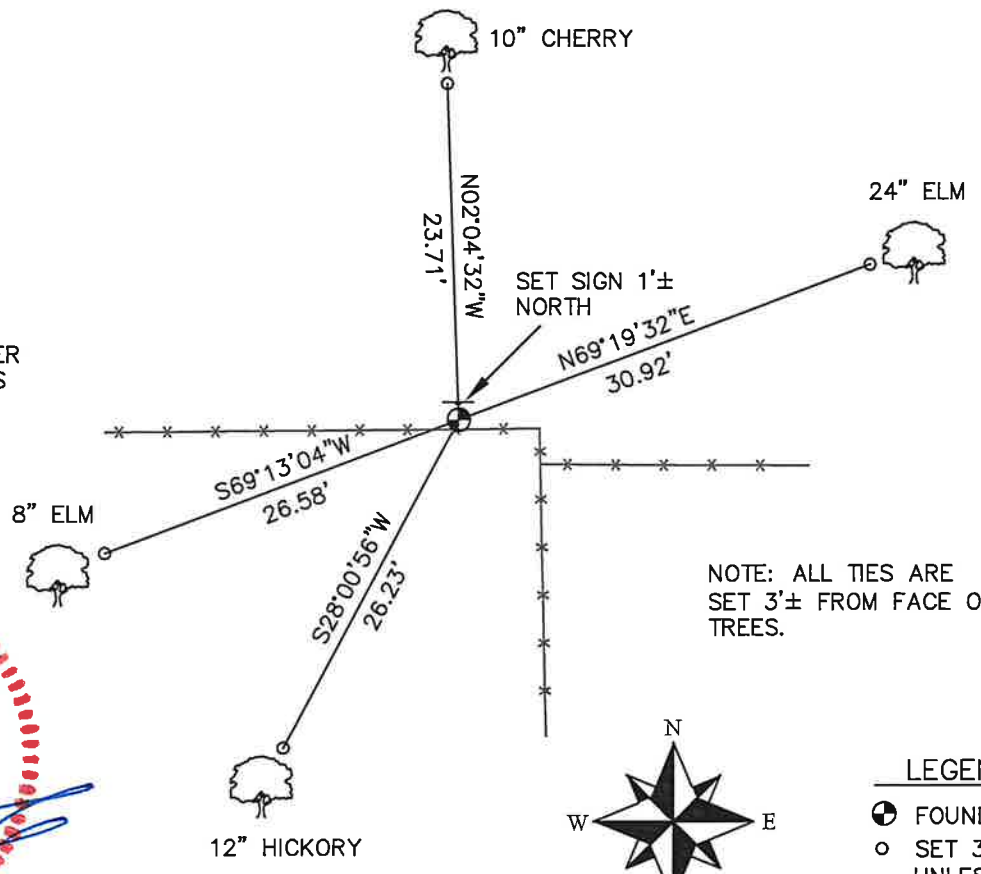


MONROE COUNTY COORDINATES NAD 83(2011)
NORTHING: 331793.4986
EASTING: 691926.5599

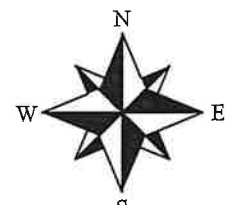
SECTION 36, T16N, R2W,
TOWN OF RIDGEVILLE
MONROE COUNTY
WISCONSIN.



● CORNER LOCATION



NOTE: ALL TIES ARE SET 3± FROM FACE OF TREES.



NOT TO SCALE

LEGEND

- FOUND HARRISON MONUMENT
- SET 3/4" X 18" IRON BAR 1.5 LB/FT UNLESS NOTED

ALL BEARINGS ARE REFERENCED TO THE MONROE COUNTY COORDINATE SYSTEM NAD 83(2011)

CERTIFICATE

CERTIFIED LAND CORNER

No. 2

21602360020

I, Gary L. Dechant, do hereby certify that on the 30th day of Sept. 1994, I found (evidence) (~~no evidence~~) of the N¼ corner of Section 1, T 15 N, R 2 W Fourth Principal Meridian, and I re-established said corner according to the Wisconsin Statutes as shown and described hereon.

History of corner establishment since Original Government Survey
Fred Holden may have been here in 1908.

Dated this 3rd day of Oct. 1994.

Gary L. Dechant
L.L.S. 1744
Title

Description of corner evidence found:

Found what is believed to be the rotted remains of an Original Bearing Tree, Br. Oak 10", N75E, 51 lks. Set corner from bearing tree, fits fence corner extremely well as well as other field evidence in the section. Distance to the "run" to the east is 12 feet shorter than the original notes, but evidence shows that the "run" has moved and probably deeper.

Description of corner and witness monuments, references and accessories used to perpetuate the original or re-established location of this corner:

Witnesses to corner location:

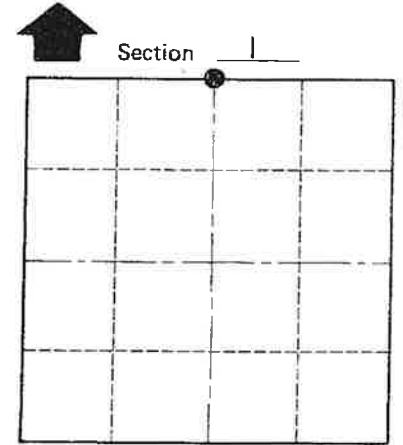
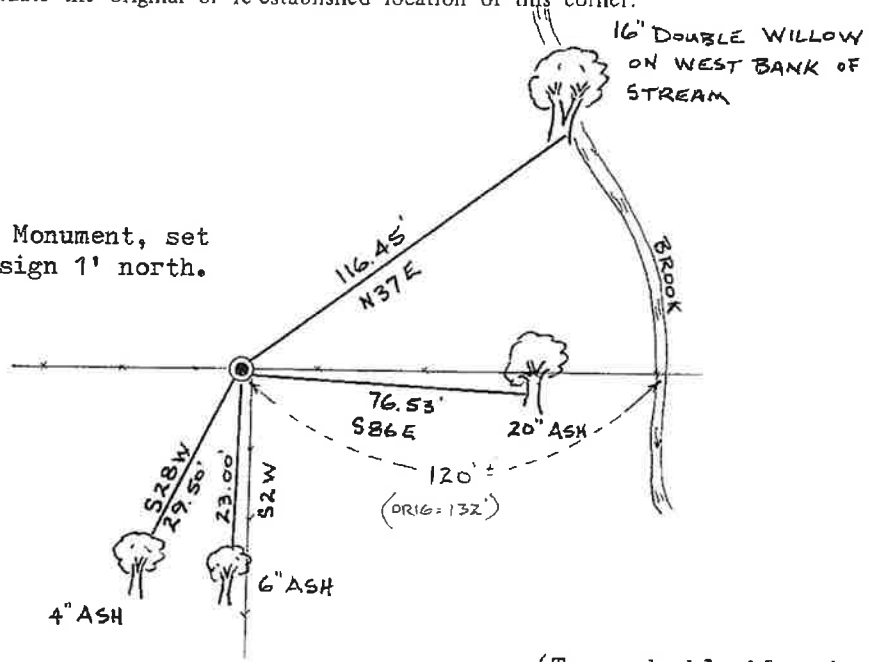
Gary L. Dechant

Gary L. Dechant



October 3, 1994

Set TCP Monument, set survey sign 1' north.



Section 1
T 15 N R 2 W
WISCONSIN

COUNTY SURVEYOR FORM NO. 1

SURVEY CONTROL ORDER

Horizontal _____
Vertical _____

WISCONSIN COORDINATE SYSTEM

Corner	East (X)	North (Y)	Elevation (Z)	Zone
Control Sta. Name				

(Trees double blazed with 20d nail set)

City, Village or Town SHELDON
County of MONROE