

U.S. PUBLIC LAND SURVEY MONUMENT RECORD

ROMPORTL #21602332000

HISTORY OF CORNER ESTABLISHMENT SINCE THE ORIGINAL GOVERNMENT SURVEY
SEE PREVIOUS TIE SHEET.

**SECTION 33, T16N, R2W,
TOWN OF RIDGEVILLE
MONROE COUNTY
WISCONSIN.**

DESCRIPTION OF CORNER EVIDENCE FOUND

FOUND AND ACCEPTED HARRISON MONUMENT AS SET BY HARLEY SIME, VERIFIED EXISTING TIES AND TOOK NEW TIES AS SHOWN.

CREW/WITNESS FOR CORNER LOCATION
-CHRISTIAN J. RUNNING
-

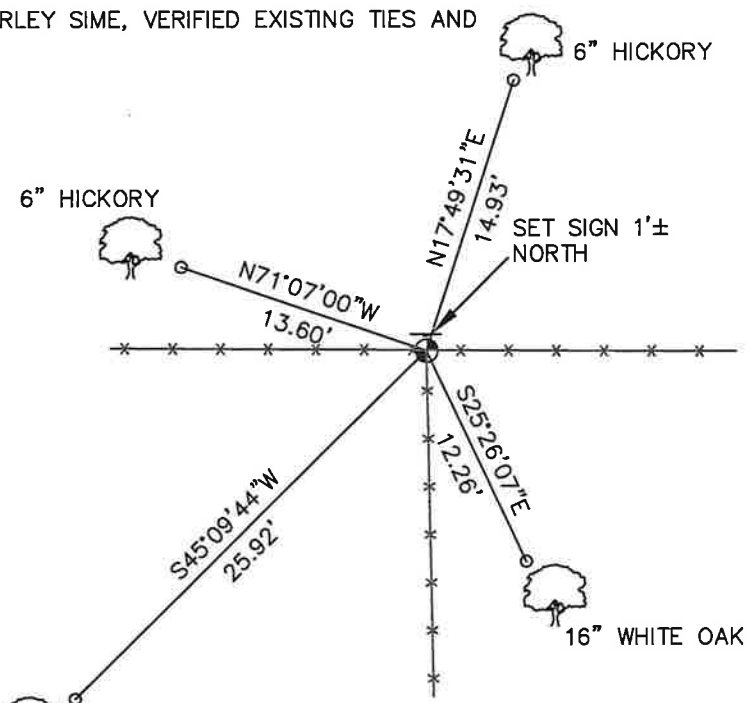
FIELD WORK COMPLETED 10/10/2023

I, CHRISTIAN J. RUNNING RLS 2558, HEREBY CERTIFY THAT THE COORDINATES PROVIDED ON THIS RECORD WERE DETERMINED BY ME OR UNDER MY DIRECT SUPERVISION AND THAT THIS FORM IS CORRECT TO THE BEST OF MY KNOWLEDGE AND BELIEF.

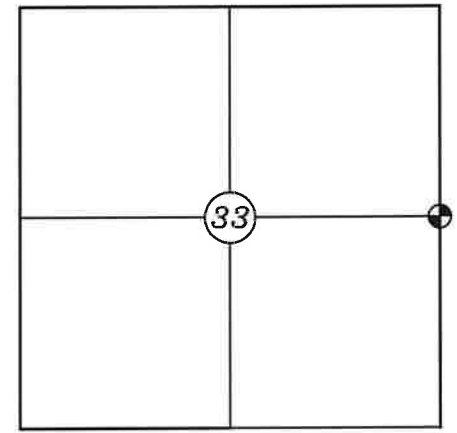
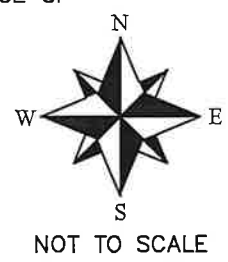
CHRISTIAN J. RUNNING
PLS 2558
RUNNING LAND SURVEYING
700 DAUPHIN ST.
LA CROSSE, WI 54603



MONROE COUNTY COORDINATES NAD 83(2011)
NORTHING: 334373.0443
EASTING: 678831.5332



NOTE: ALL TIES ARE SET 3'± FROM FACE OF TREES.



● CORNER LOCATION

LEGEND

- FOUND HARRISON MONUMENT
- SET 3/4" X 18" IRON BAR 1.5 LB/FT UNLESS NOTED

ALL BEARINGS ARE REFERENCED TO THE MONROE COUNTY COORDINATE SYSTEM NAD 83(2011)

I, Harley A. Sime, do hereby certify that on the 28th day of March 19 80, I found (evidence) (~~no evidence~~) of the W¹/₄ corner of Section 34, T. 16 N, R. 2 W Fourth Principal Meridian, and I re-established said corner according to the Wisconsin Statutes as shown and described hereon.

History of corner establishment since Original Government Survey
Schroeder was here in April of 1883.

Description of corner evidence found:

G. Sime set a 3/4"x24" iron bar here in November of 1975. Found the iron bar and replaced it with a Harrison Monument. Accepted the occupied corner as the best available evidence of the original government survey.

Dated this 15th day of Jan. 19 81.

H.A. Sime, R.L.S. 355

County Surveyor
Title

COUNTY SURVEYOR FORM NO. 1

Description of corner and witness monuments, references and accessories used to perpetuate the original or re-established location of this corner:

Witnesses to corner location:

G. Dechant
B. Meyer
T. Tormoen

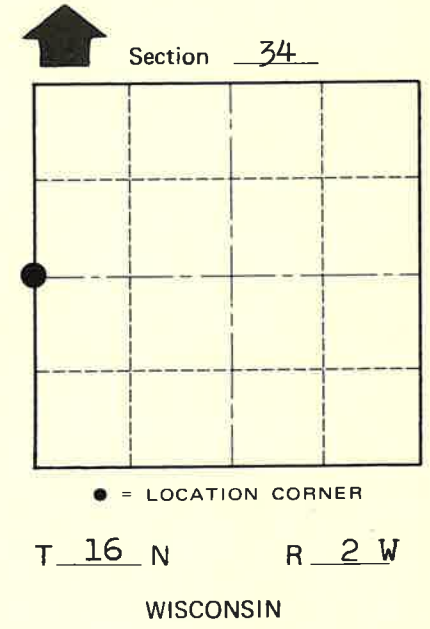
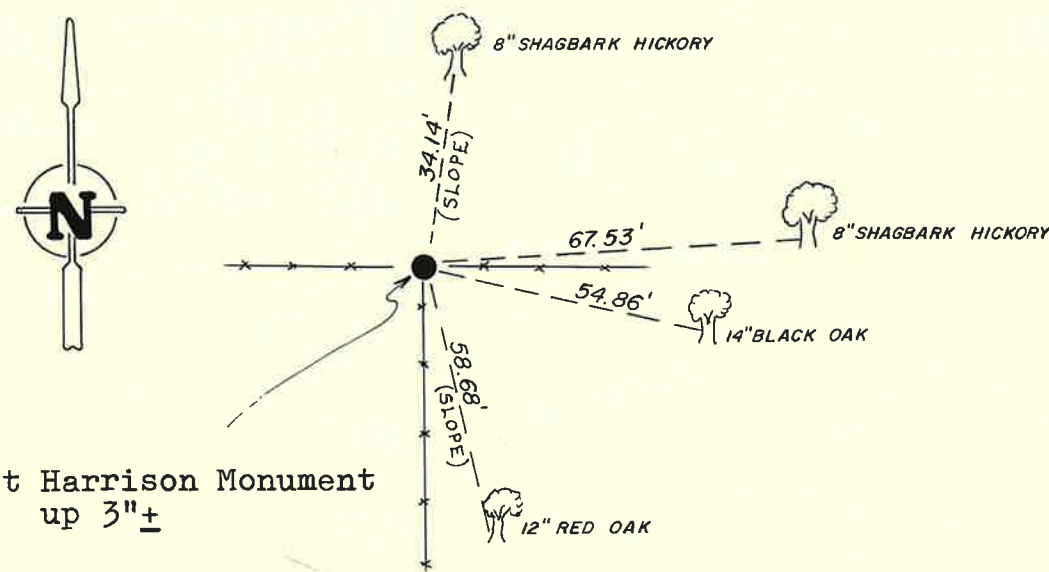
Approved: HARLEY A. SIME
MONROE CO. SURVEYOR

SURVEY CONTROL ORDER

Horizontal	_____
Vertical	_____

WISCONSIN COORDINATE SYSTEM

Corner	East (X)	North (Y)	Elevation (Z)	Zone
Control Sta. Name				



(All trees are double blazed with N&C's set)

~~City, Village~~ or Town Ridgeville
County of Monroe