

U.S. PUBLIC LAND SURVEY MONUMENT RECORD

ROMPORTL #21602330000

HISTORY OF CORNER ESTABLISHMENT SINCE THE ORIGINAL GOVERNMENT SURVEY
SEE PREVIOUS TIE SHEET.

DESCRIPTION OF CORNER EVIDENCE FOUND

FOUND AND ACCEPTED HARRISON AS SET BY GARY SIMET, VERIFIED EXISTING TIES AND TOOK NEW TIES AS SHOWN.

CREW/WITNESS FOR CORNER LOCATION
-CHRISTIAN J. RUNNING
-LEIGH A. RUNNING

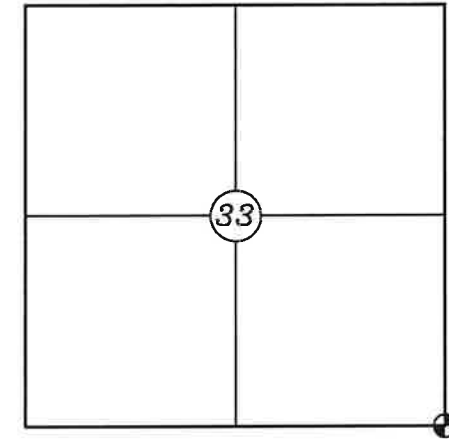
FIELD WORK COMPLETED 10/26/2023

I, CHRISTIAN J. RUNNING RLS 2558, HEREBY CERTIFY THAT THE COORDINATES PROVIDED ON THIS RECORD WERE DETERMINED BY ME OR UNDER MY DIRECT SUPERVISION AND THAT THIS FORM IS CORRECT TO THE BEST OF MY KNOWLEDGE AND BELIEF.

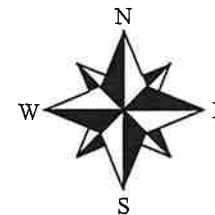
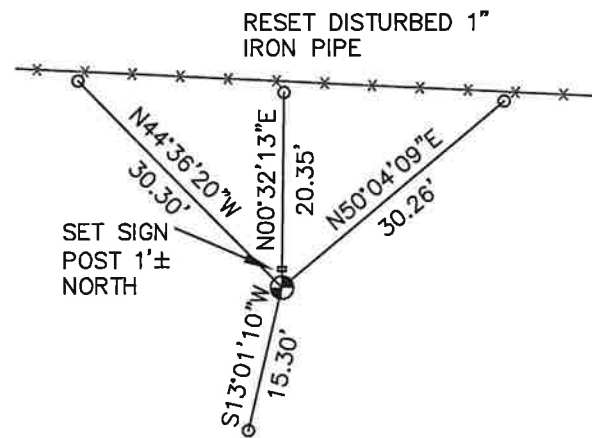
CHRISTIAN J. RUNNING
PLS 2558
RUNNING LAND SURVEYING
700 DAUPHIN ST.
LA CROSSE, WI 54603



SECTION 33, T16N, R2W,
TOWN OF RIDGEVILLE
MONROE COUNTY
WISCONSIN.



⊕ CORNER LOCATION



NOT TO SCALE

NOTE: ALL TIES ARE SET 3'± FROM FACE OF TREES.

LEGEND

- ⊕ FOUND HARRISON, MISSING TOP
- SET 3/4" X 18" IRON BAR 1.5 LB/FT UNLESS NOTED

ALL BEARINGS ARE REFERENCED TO THE MONROE COUNTY COORDINATE SYSTEM NAD 83(2011)

MONROE COUNTY COORDINATES NAD 83(2011)
NORTHING: 331778.9595
EASTING: 678771.3563

CERTIFICATE

CERTIFIED LAND CORNER

No. 7

21602330000

I, Garold A. Sime, do hereby certify that on the 20th day of August 19 93, I found ~~(evidence)~~ (no evidence) of the Northwest corner of Section 3, T. 15 N., R. 2 W. Fourth Principal Meridian, and I re-established said corner according to the Wisconsin Statutes as shown and described hereon.

History of corner establishment since Original Government Survey

A. B. Holden was at this corner in March of 1879.

Dated this 20th day of Aug. 19 93.

Garold A. Sime
 Monroe County Surveyor
 Title

Description of corner evidence found:
 I established this corner by intersecting the projection of the north-south fence line with the occupied north line of the NE $\frac{1}{4}$ -NW $\frac{1}{4}$ projected westerly.

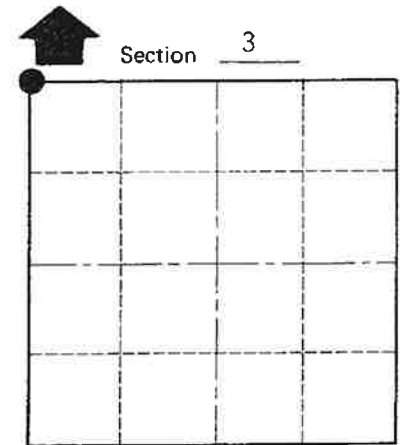
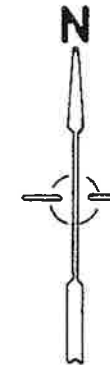
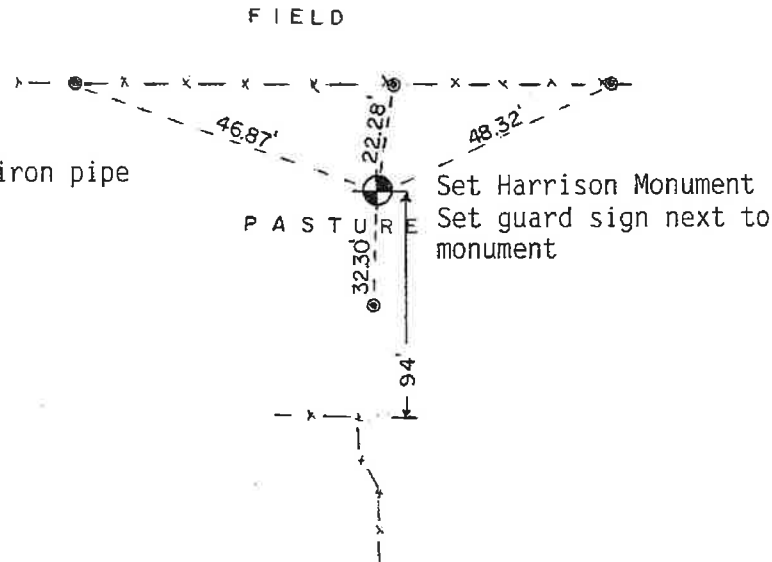
COUNTY SURVEYOR FORM NO. 1

Description of corner and witness monuments, references and accessories used to perpetuate the original or re-established location of this corner:

Set cast iron Harrison Monument at corner
 Set guard sign next to Harrison

Witnesses to corner location:

Garold A. Sime, R.L.S.
Bryan H. Meyer, R.L.S.
Richard Lobe



○ = LOCATION CORNER

T 15 N R 2 W
 WISCONSIN



SURVEY CONTROL ORDER

Horizontal	_____
Vertical	_____

WISCONSIN COORDINATE SYSTEM

Corner	East (X)	North (Y)	Elevation (Z)	Zone
Control Sta. Name				

~~City, Village~~ or Town of Sheldon
 County of Monroe