

# U.S. PUBLIC LAND SURVEY MONUMENT RECORD

ROMPORTL #21602252000

HISTORY OF CORNER ESTABLISHMENT SINCE THE ORIGINAL GOVERNMENT SURVEY  
SEE PREVIOUS TIE SHEET.

SECTION 25, T16N, R2W,  
TOWN OF RIDGEVILLE  
MONROE COUNTY  
WISCONSIN.

DESCRIPTION OF CORNER EVIDENCE FOUND

FOUND AND ACCEPTED HARRISON MONUMENT AS SET BY LAWRENCE FEDDERSON, VERIFIED EXISTING TIES AND TOOK NEW TIES AS SHOWN.

CREW/WITNESS FOR CORNER LOCATION  
-CHRISTIAN J. RUNNING  
-

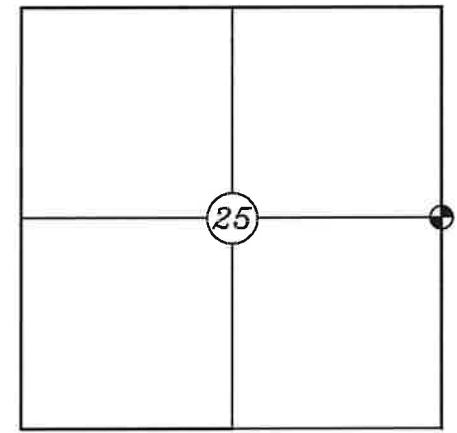
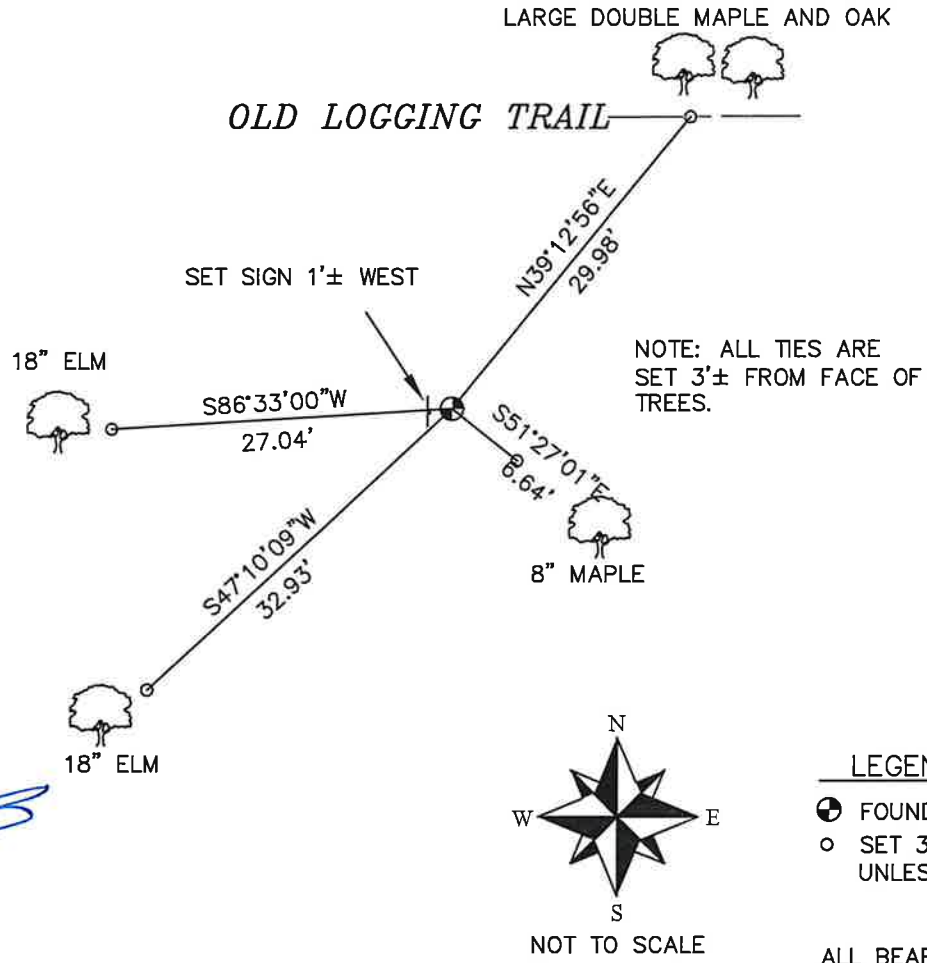
FIELD WORK COMPLETED 10/10/2023

I, CHRISTIAN J. RUNNING RLS 2558, HEREBY CERTIFY THAT THE COORDINATES PROVIDED ON THIS RECORD WERE DETERMINED BY ME OR UNDER MY DIRECT SUPERVISION AND THAT THIS FORM IS CORRECT TO THE BEST OF MY KNOWLEDGE AND BELIEF.

CHRISTIAN J. RUNNING  
PLS 2558  
RUNNING LAND SURVEYING  
700 DAUPHIN ST.  
LA CROSSE, WI 54603



MONROE COUNTY COORDINATES NAD 83(2011)  
NORTHING: 339717.2547  
EASTING: 694584.5523



$\odot$  CORNER LOCATION

LEGEND

- $\odot$  FOUND HARRISON MONUMENT
- $\circ$  SET 3/4" X 18" IRON BAR 1.5 LB/FT UNLESS NOTED

ALL BEARINGS ARE REFERENCED TO THE MONROE COUNTY COORDINATE SYSTEM NAD 83(2011)

I, Lawrence A. Feddersen, do hereby certify that on the 27th day of June 1995, I found (evidence) ~~(XXXXXXXX)~~ of the East Quarter corner of Section 25, T 16 N, R 2 W Fourth Principal Meridian, and I re-established said corner according to the Wisconsin Statutes as shown and described hereon.

Dated this 7th day of July 1995.

*Lawrence A. Feddersen*

Registered Land Surveyor  
Title

**History of corner establishment since Original Government Survey**

No record of re-established corner.

Description of corner evidence found:

Accepted a 2-way fence intersection as best possible evidence.

COUNTY SURVEYOR FORM NO. 1

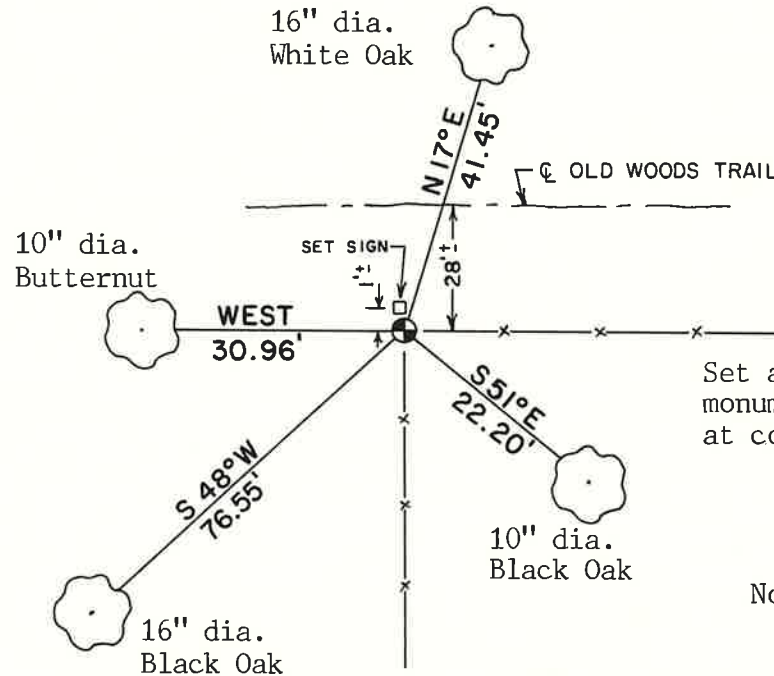
Description of corner and witness monuments, references and accessories used to perpetuate the original or re-established location of this corner:

Witnesses to corner location:

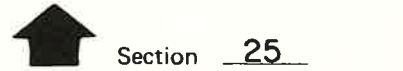
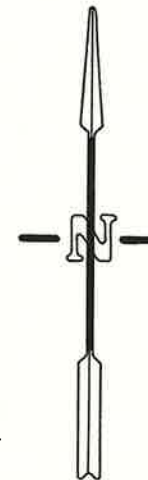
Lawrence A. Feddersen

Douglas J. Malliet

Timothy J. Jeatran



Set a True Cast Products monument flush to ground at corner.



● = LOCATION CORNER

T 16 N R 2 W

WISCONSIN

Note: All trees are single blazed in face of tree with PK nail & washer in blaze on side of tree. Distances are slope taped to PK nail.

**SURVEY CONTROL ORDER**

Horizontal \_\_\_\_\_

Vertical \_\_\_\_\_

**WISCONSIN COORDINATE SYSTEM**

Corner	East (X)	North (Y)	Elevation (Z)	Zone
Control Sta. Name				

City, Village or Town Ridgeville

County of Monroe