

# U.S. PUBLIC LAND SURVEY MONUMENT RECORD

ROMPORTL #21602240000

HISTORY OF CORNER ESTABLISHMENT SINCE THE ORIGINAL GOVERNMENT SURVEY  
SEE PREVIOUS TIE SHEET.

DESCRIPTION OF CORNER EVIDENCE FOUND

FOUND AND ACCEPTED HARRISON MONUMENT AS SET BY GARY SIME, VERIFIED EXISTING TIES AND TOOK NEW TIES AS SHOWN.

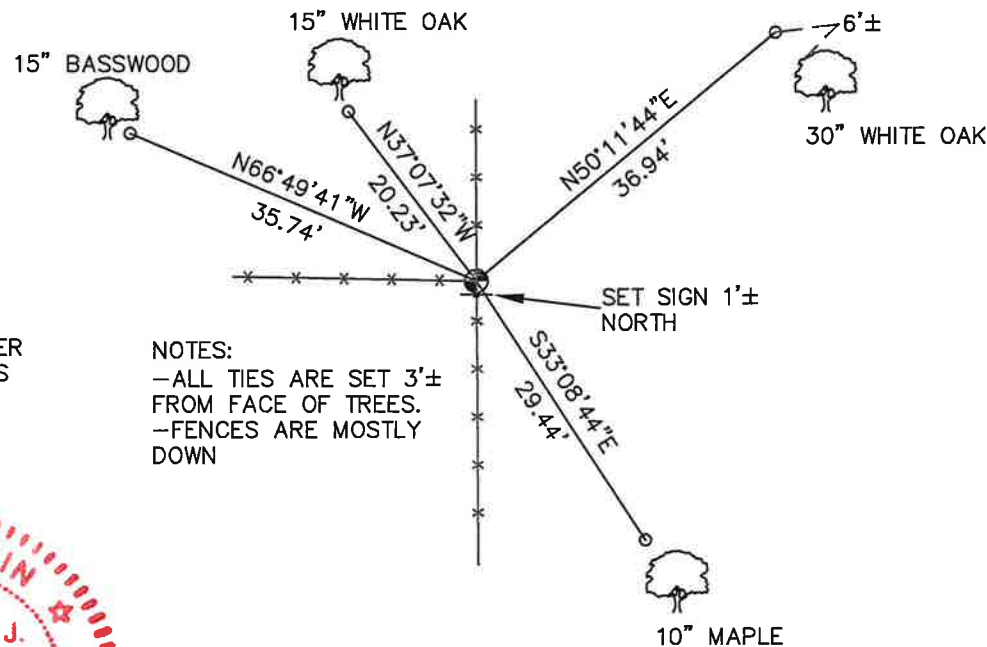
SECTION 24, T16N, R2W,  
TOWN OF RIDGEVILLE  
MONROE COUNTY  
WISCONSIN.

CREW/WITNESS FOR CORNER LOCATION  
-CHRISTIAN J. RUNNING  
-

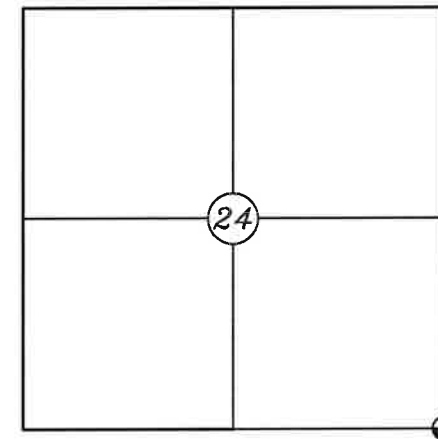
FIELD WORK COMPLETED 10/10/2023

I, CHRISTIAN J. RUNNING RLS 2558, HEREBY CERTIFY THAT THE COORDINATES PROVIDED ON THIS RECORD WERE DETERMINED BY ME OR UNDER MY DIRECT SUPERVISION AND THAT THIS FORM IS CORRECT TO THE BEST OF MY KNOWLEDGE AND BELIEF.

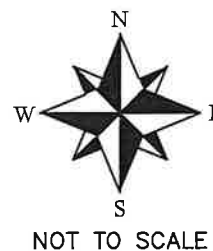
CHRISTIAN J. RUNNING  
PLS 2558  
RUNNING LAND SURVEYING  
700 DAUPHIN ST.  
LA CROSSE, WI 54603



NOTES:  
-ALL TIES ARE SET 3'± FROM FACE OF TREES.  
-FENCES ARE MOSTLY DOWN



● CORNER LOCATION



LEGEND

- FOUND HARRISON MONUMENT
- SET 3/4" X 18" IRON BAR 1.5 LB/FT UNLESS NOTED

ALL BEARINGS ARE REFERENCED TO THE MONROE COUNTY COORDINATE SYSTEM NAD 83(2011)

MONROE COUNTY COORDINATES NAD 83(2011)  
NORTHING: 342327.4957  
EASTING: 694611.8697

I, Garold A. Sime, do hereby certify that on the 14th day of November 1995, I found (evidence) (~~XXXXXX~~) of the Northeast corner of Section 25, T 16 N, R 2 W Fourth Principal Meridian, and I re-established said corner according to the Wisconsin Statutes as shown and described hereon.

Dated this 30th day of Dec. 1995.

Garold A. Sime

Monroe County Surveyor  
Title

**History of corner establishment since Original Government Survey**

It is believed that W. Kenyon was at this corner in 1895.

Description of corner evidence found:

Accepted the fence corner as the best available evidence.

Description of corner and witness monuments, references and accessories used to perpetuate the original or re-established location of this corner:

Set Harrison Monument at corner.  
Set guard sign next to monument

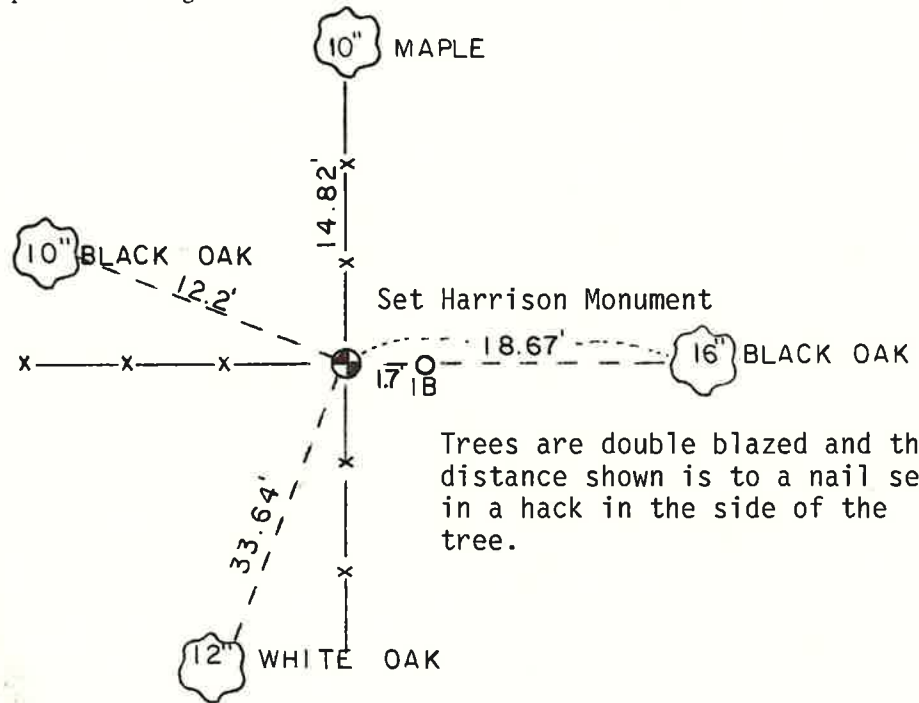
Witnesses to corner location:

Garold A. Sime

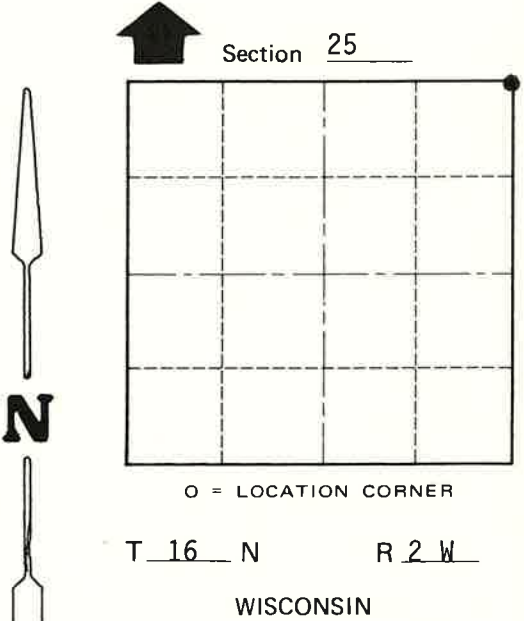
Donald Cooper

Harold Haberlin

COUNTY SURVEYOR FORM NO. 1



Trees are double blazed and the distance shown is to a nail set in a hack in the side of the tree.



**SURVEY CONTROL ORDER**

Horizontal	_____
Vertical	_____

**WISCONSIN COORDINATE SYSTEM**

Corner	East (X)	North (Y)	Elevation (Z)	Zone
Control Sta. Name				

City, Village or Town of Ridgeville  
County of Monroe