

U.S. PUBLIC LAND SURVEY MONUMENT RECORD

ROMPORTL #21602190020

HISTORY OF CORNER ESTABLISHMENT SINCE THE ORIGINAL GOVERNMENT SURVEY
SEE PREVIOUS TIE SHEET.

DESCRIPTION OF CORNER EVIDENCE FOUND

FOUND AND ACCEPTED HARRISON MONUMENT AS SET BY BRYAN MEYER, VERIFIED EXISTING TIES AND TOOK NEW TIES AS SHOWN. MONUMENT WAS FOUND TO BE LEANING HEAVILY. I PLUMBED THE HARRISON AND PILED ROCKS AROUND IT.

CREW/WITNESS FOR CORNER LOCATION
-CHRISTIAN J. RUNNING
-

FIELD WORK COMPLETED 10/09/2023

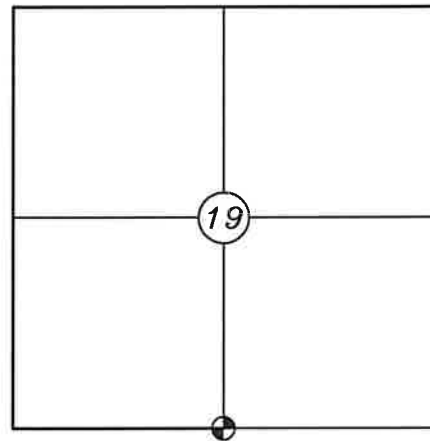
I, CHRISTIAN J. RUNNING RLS 2558, HEREBY CERTIFY THAT THE COORDINATES PROVIDED ON THIS RECORD WERE DETERMINED BY ME OR UNDER MY DIRECT SUPERVISION AND THAT THIS FORM IS CORRECT TO THE BEST OF MY KNOWLEDGE AND BELIEF.

CHRISTIAN J. RUNNING
PLS 2558
RUNNING LAND SURVEYING
700 DAUPHIN ST.
LA CROSSE, WI 54603

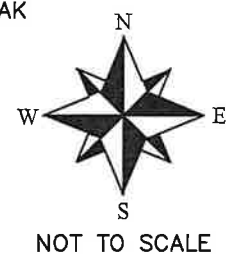
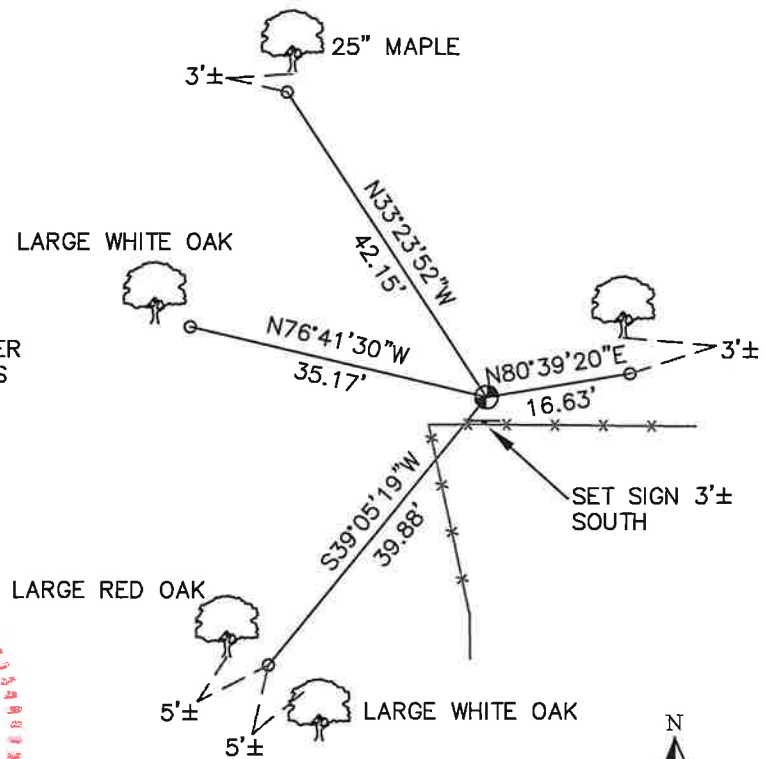


MONROE COUNTY COORDINATES NAD 83(2011)
NORTHING: 342292.7483
EASTING: 665702.0052

SECTION 19, T16N, R2W,
TOWN OF RIDGEVILLE
MONROE COUNTY
WISCONSIN.



● CORNER LOCATION



LEGEND

- FOUND HARRISON MONUMENT
- SET 3/4" X 18" IRON BAR 1.5 LB/FT UNLESS NOTED

ALL BEARINGS ARE REFERENCED TO THE MONROE COUNTY COORDINATE SYSTEM NAD 83(2011)

I, Bryan H. Meyer, do hereby certify that on the 3rd day of January 19 84, I found (evidence) ~~(no evidence)~~ of the South 1/4 corner of Section 19, T 16 N, R 2 W Fourth Principal Meridian, and I re-established said corner according to the Wisconsin Statutes as shown and described hereon.

Dated this 4th day of Jan. 19 84.

Bryan H. Meyer

Deputy County Surveyor
Title

History of corner establishment since Original Government Survey

Schroeder was here in April of 1883.

Description of corner evidence found:

Accepted intersection of fences E-W-S, as the best available evidence.

Description of corner and witness monuments, references and accessories used to perpetuate the original or re-established location of this corner:

Crew: Meyer, Perrigo
Date: January 3, 1984 - 10:00 A.M.
Weather: Windy, Overcast, 30°±
Witnesses to corner location:

Bryan H. Meyer

Dennis Perrigo

Crew: Bryan H. Meyer, R.L.S.

John Kenworthy

Brian Forsythe

Date: May 4th, 1989

20" Maple
"M"

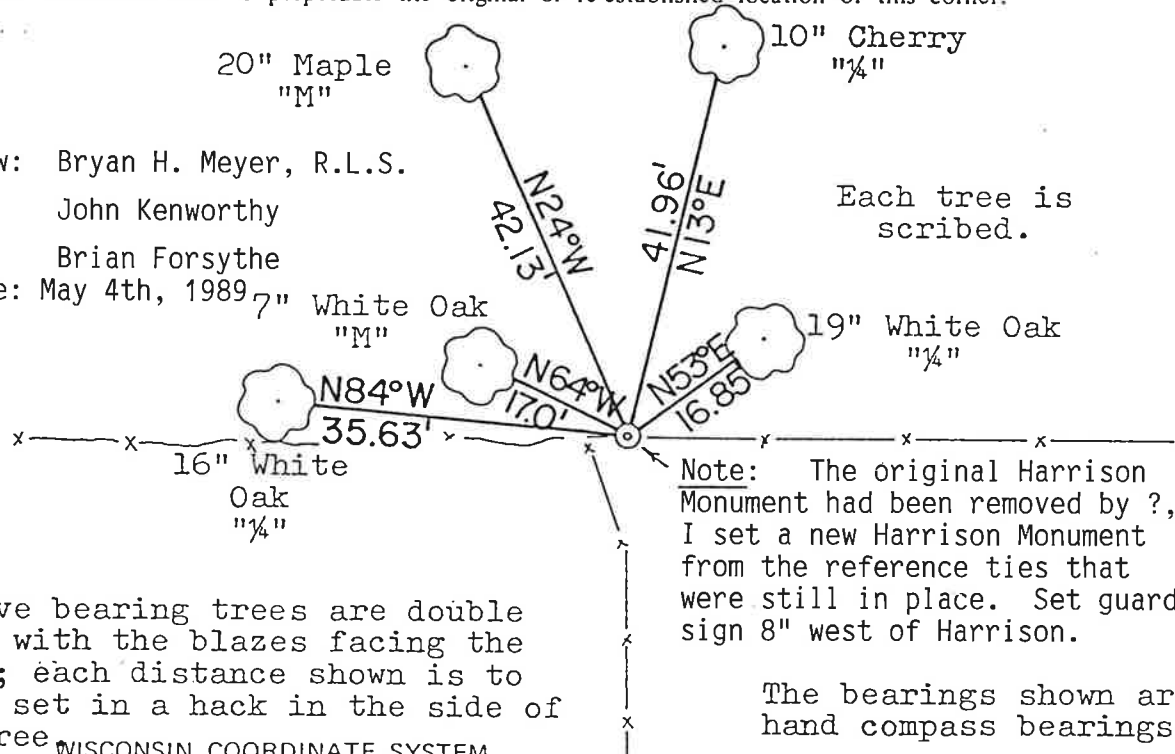
10" Cherry
"1/4"

7" White Oak
"M"

19" White Oak
"1/4"

16" White Oak
"1/4"

Each tree is scribed.



All five bearing trees are double blazed with the blazes facing the corner; each distance shown is to a nail set in a hack in the side of each tree.

WISCONSIN COORDINATE SYSTEM

APPROVED: Harley A. Sime
Monroe County Surveyor

SURVEY CONTROL ORDER

Horizontal	_____
Vertical	_____

Corner	East (X)	North (Y)	Elevation (Z)	Zone
Control Sta. Name				

~~City, Village or~~ Town of Ridgeville

County of Monroe



COUNTY SURVEYOR FORM NO. 1

I, Bryan H. Meyer, do hereby certify that on the 3rd day of January 19 84, I found (evidence) ~~no evidence~~ of the South 1/4 corner of Section 19, T 16 N, R 2 W Fourth Principal Meridian, and I re-established said corner according to the Wisconsin Statutes as shown and described hereon.

Dated this 4th day of Jan. 19 84.

Bryan H. Meyer
Deputy County Surveyor
Title

History of corner establishment since Original Government Survey

Schroeder was here in April of 1883.

Description of corner evidence found:

Accepted intersection of fences E-W-S, as the best available evidence.



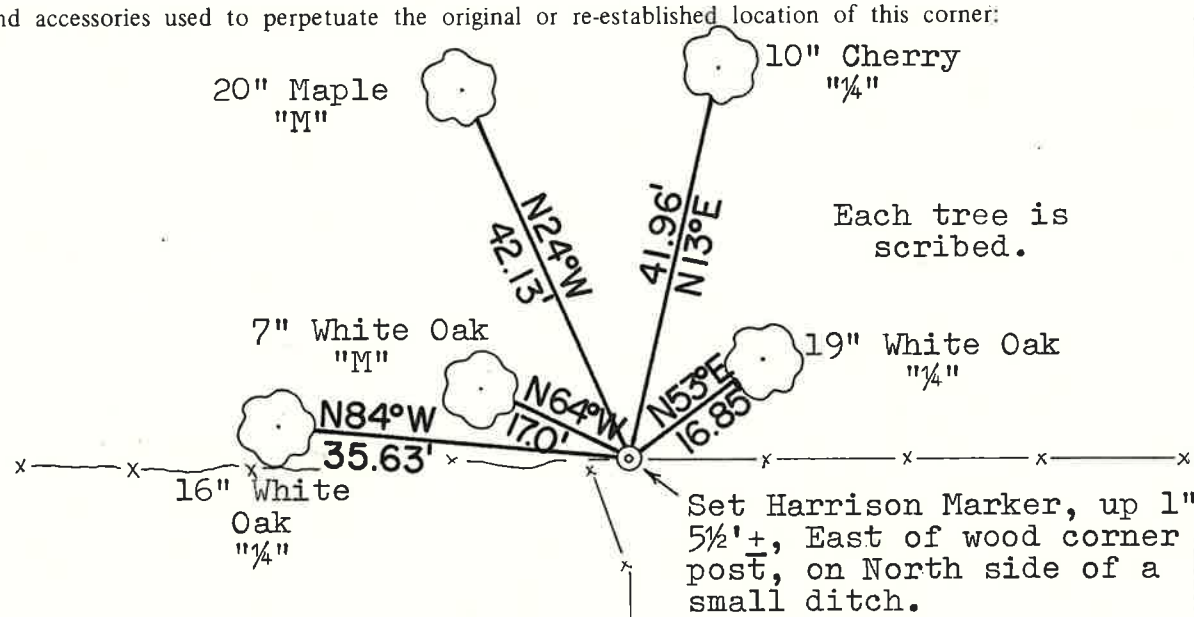
COUNTY SURVEYOR FORM NO. 1

Description of corner and witness monuments, references and accessories used to perpetuate the original or re-established location of this corner:

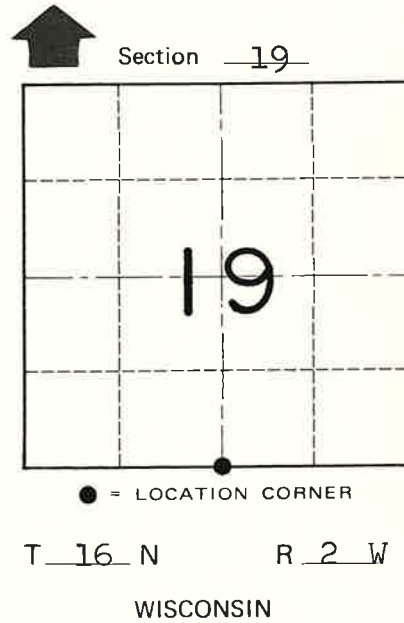
Crew: Meyer, Perrigo
Date: January 3, 1984 - 10:00 A.M.
Weather: Windy, Overcast, 30°±
Witnesses to corner location:

Bryan H. Meyer

Dennis Perrigo



APPROVED: Harley A. Sime
Monroe County Surveyor



All five bearing trees are double blazed with the blazes facing the corner; each distance shown is to a nail set in a hack in the side of each tree.

WISCONSIN COORDINATE SYSTEM

SURVEY CONTROL ORDER

Horizontal	_____
Vertical	_____

Corner	East (X)	North (Y)	Elevation (Z)	Zone
Control Sta. Name				

~~City, Village or~~ Town of Ridgeville
County of Monroe