

U.S. PUBLIC LAND SURVEY MONUMENT RECORD

ROMPORTL #21602130000

HISTORY OF CORNER ESTABLISHMENT SINCE THE ORIGINAL GOVERNMENT SURVEY
SEE PREVIOUS TIE SHEET.

DESCRIPTION OF CORNER EVIDENCE FOUND

FOUND AND ACCEPTED HARRISON MONUMENT AS SET BY GARY SIME, VERIFIED EXISTING TIES AND TOOK NEW TIES AS SHOWN.

CREW/WITNESS FOR CORNER LOCATION
-CHRISTIAN J. RUNNING
-

FIELD WORK COMPLETED 10/10/2023

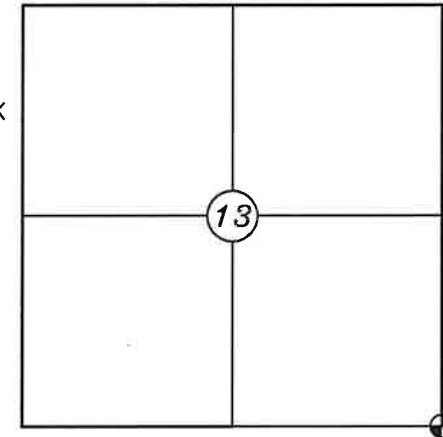
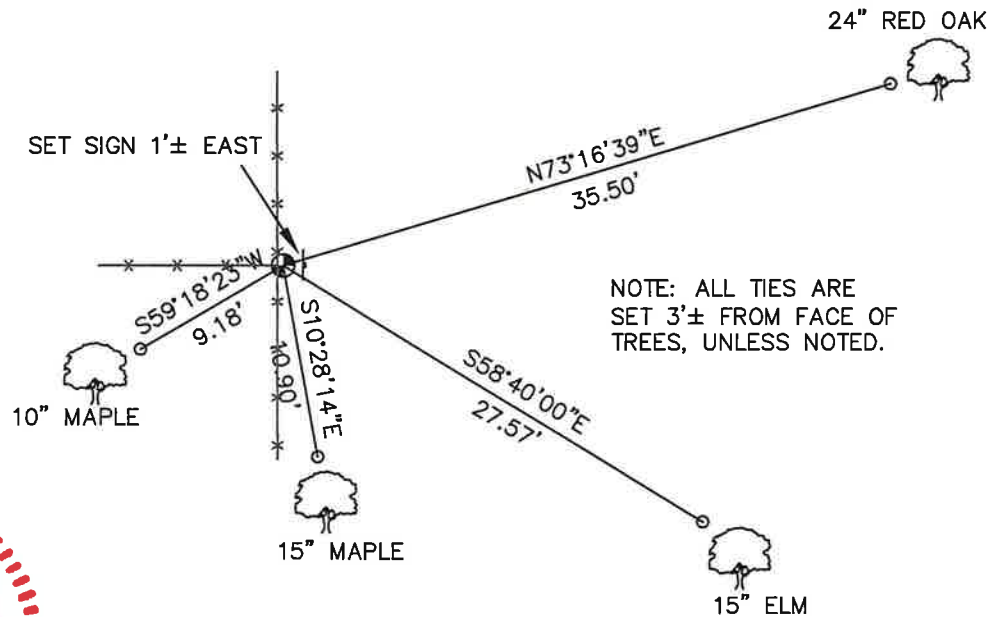
I, CHRISTIAN J. RUNNING RLS 2558, HEREBY CERTIFY THAT THE COORDINATES PROVIDED ON THIS RECORD WERE DETERMINED BY ME OR UNDER MY DIRECT SUPERVISION AND THAT THIS FORM IS CORRECT TO THE BEST OF MY KNOWLEDGE AND BELIEF.

CHRISTIAN J. RUNNING
PLS 2558
RUNNING LAND SURVEYING
700 DAUPHIN ST.
LA CROSSE, WI 54603



MONROE COUNTY COORDINATES NAD 83(2011)
NORTHING: 347579.5633
EASTING: 694674.3227

SECTION 13, T16N, R2W,
TOWN OF RIDGEVILLE
MONROE COUNTY
WISCONSIN.



● CORNER LOCATION



LEGEND

- FOUND HARRISON MONUMENT
- SET 3/4" X 18" IRON BAR 1.5 LB/FT UNLESS NOTED

ALL BEARINGS ARE REFERENCED TO THE MONROE COUNTY COORDINATE SYSTEM NAD 83(2011)

CERTIFICATE

I, Garold A. Sime, do hereby certify that on the 19th day of October 1995, I found (evidence) (~~no evidence~~) of the Southwest corner of Section 18, T 16 N, R 1 W Fourth Principal Meridian, and I re-established said corner according to the Wisconsin Statutes as shown and described hereon.

Dated this 14th day of Dec. 1995.

Garold A. Sime

Monroe County Surveyor

Title

CERTIFIED LAND CORNER

History of corner establishment since Original Government Survey

No history of corner establishment since the original government survey.

Description of corner evidence found:

Accepted the existing fence corner as best available evidence of corner location

No. 73

21602130000

COUNTY SURVEYOR FORM NO. 1

Description of corner and witness monuments, references and accessories used to perpetuate the original or re-established location of this corner:

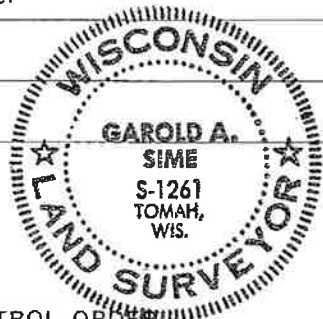
Set Harrison Monument at corner with guard sign next to monument.

Witnesses to corner location:

Garold A. Sime, R.L.S.

Harold Haberlin (set monument)

Donald Cooper

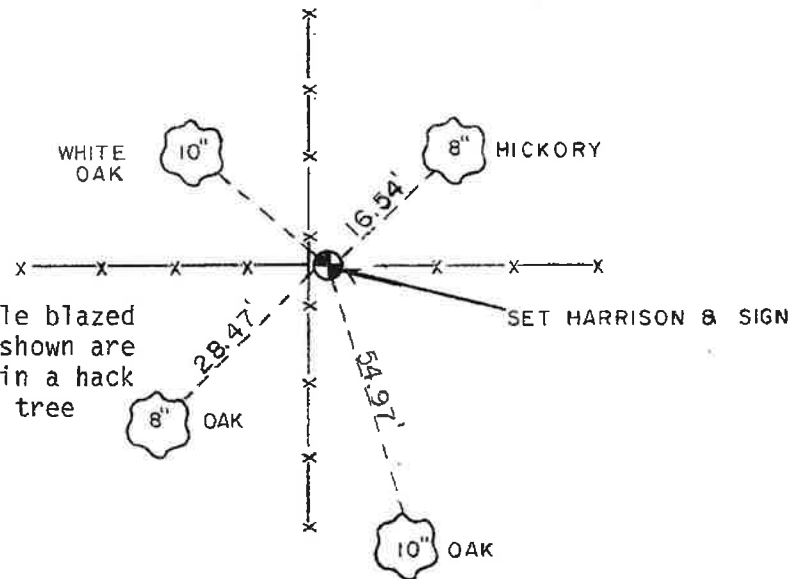


SURVEY CONTROL ORDER

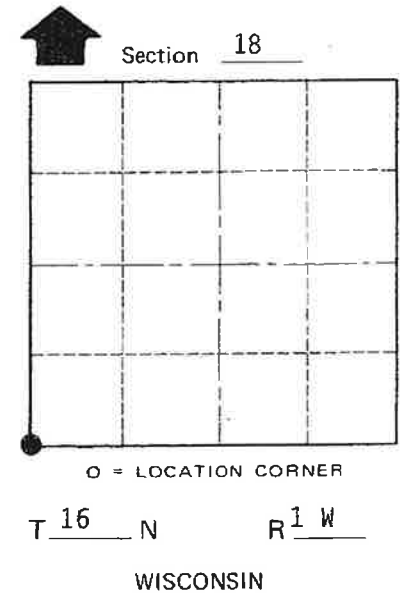
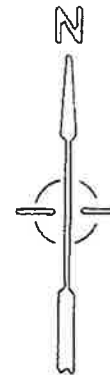
Horizontal	_____
Vertical	_____

WISCONSIN COORDINATE SYSTEM

Corner	East (X)	North (Y)	Elevation (Z)	Zone
Control Sta. Name				



Trees are double blazed and distances shown are to a nail set in a hack in the side of tree



~~City or Village~~ or Town of Wilton
County of Monroe