

# U.S. PUBLIC LAND SURVEY MONUMENT RECORD

ROMPORTL #21602062000

HISTORY OF CORNER ESTABLISHMENT SINCE THE ORIGINAL GOVERNMENT SURVEY  
SEE PREVIOUS TIE SHEET.

DESCRIPTION OF CORNER EVIDENCE FOUND

FOUND AND ACCEPTED 1" IRON BAR AS SET BY GARY DECHANT, VERIFIED EXISTING TIES AND TOOK NEW TIES AS SHOWN.

CREW/WITNESS FOR CORNER LOCATION  
-CHRISTIAN J. RUNNING  
-LEIGH A. RUNNING

FIELD WORK COMPLETED 10/23/2023

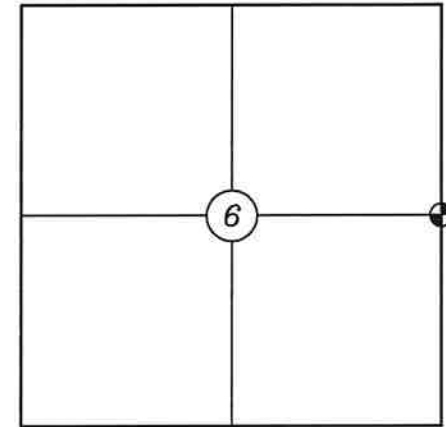
I, CHRISTIAN J. RUNNING RLS 2558, HEREBY CERTIFY THAT THE COORDINATES PROVIDED ON THIS RECORD WERE DETERMINED BY ME OR UNDER MY DIRECT SUPERVISION AND THAT THIS FORM IS CORRECT TO THE BEST OF MY KNOWLEDGE AND BELIEF.

CHRISTIAN J. RUNNING  
PLS 2558  
RUNNING LAND SURVEYING  
700 DAUPHIN ST.  
LA CROSSE, WI 54603

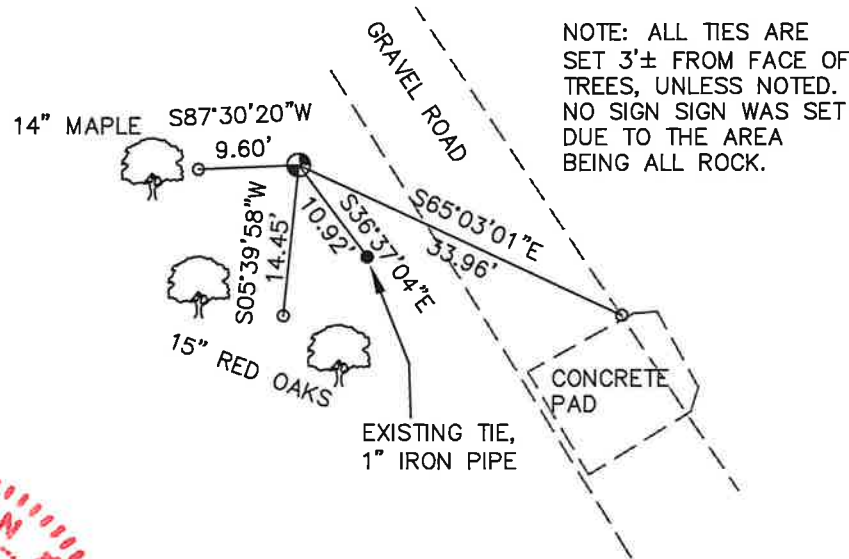


MONROE COUNTY COORDINATES NAD 83(2011)  
NORTHING: 360699.8586  
EASTING: 668396.9924

SECTION 6, T16N, R2W,  
TOWN OF RIDGEVILLE  
MONROE COUNTY  
WISCONSIN.



● CORNER LOCATION



NOTE: ALL TIES ARE SET 3'± FROM FACE OF TREES, UNLESS NOTED. NO SIGN SIGN WAS SET DUE TO THE AREA BEING ALL ROCK.



LEGEND

- FOUND 1" IRON BAR
- SET 3/4" X 18" IRON BAR 1.5 LB/FT UNLESS NOTED

ALL BEARINGS ARE REFERENCED TO THE MONROE COUNTY COORDINATE SYSTEM NAD 83(2011)

I, Gary L. Dechant, do hereby certify that on the 2nd day of August 2000, I found (evidence) ~~(no evidence)~~ of the W<sup>1</sup>/<sub>4</sub> corner of Sec. 5, T 16 N, R 2 W Fourth Principal Meridian, and I re-established said corner according to the Wisconsin Statutes as shown and described hereon.

Dated this 14th day of Sept. 2000.

*Gary L. Dechant*

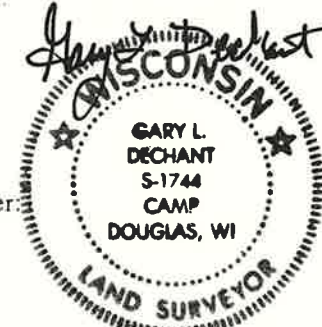
R. L. S. 1744  
Title

History of corner establishment since Original Government Survey

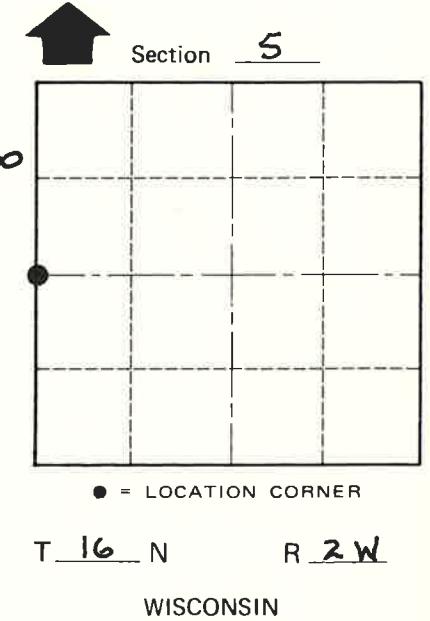
Fred Holden was probably here in 1910.

Description of corner evidence found:

Set corner at projected fence lines from the west and south.  
Fits very well considering rugged terrain. Measures 2642.58 to SW corner of Section 5.



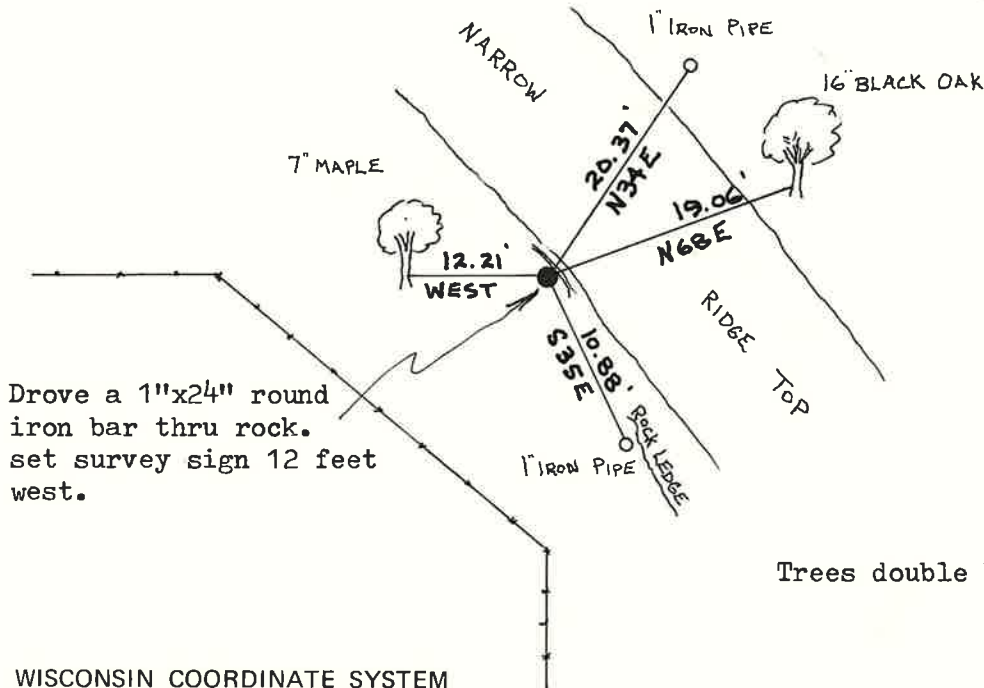
*Sept. 14, 2000*



Description of corner and witness monuments, references and accessories used to perpetuate the original or re-established location of this corner:

Witnesses to corner location:  
Zachariah P. Dechant

Gary L. Dechant



Drove a 1"x24" round iron bar thru rock. set survey sign 12 feet west.

Trees double blazed with 40d nail set.

COUNTY SURVEYOR FORM NO. 1

SURVEY CONTROL ORDER

Horizontal	_____
Vertical	_____

WISCONSIN COORDINATE SYSTEM

Corner	East (X)	North (Y)	Elevation (Z)	Zone
Control Sta. Name				

City, Village or Town RIDGEVILLE  
County of MONROE