

# U.S. PUBLIC LAND SURVEY MONUMENT RECORD

ROMPORTL #21602030010

HISTORY OF CORNER ESTABLISHMENT SINCE THE ORIGINAL GOVERNMENT SURVEY  
SEE PREVIOUS TIE SHEET.

DESCRIPTION OF CORNER EVIDENCE FOUND

FOUND AND ACCEPTED 1" SQUARE IRON BAR AS SET BY BILL JUNG, VERIFIED EXISTING TIES AND TOOK NEW TIES AS SHOWN.

CREW/WITNESS FOR CORNER LOCATION  
-CHRISTIAN J. RUNNING  
-

FIELD WORK COMPLETED 10/09/2023

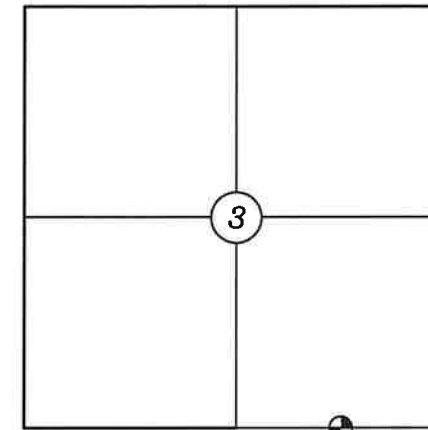
I, CHRISTIAN J. RUNNING RLS 2558, HEREBY CERTIFY THAT THE COORDINATES PROVIDED ON THIS RECORD WERE DETERMINED BY ME OR UNDER MY DIRECT SUPERVISION AND THAT THIS FORM IS CORRECT TO THE BEST OF MY KNOWLEDGE AND BELIEF.

CHRISTIAN J. RUNNING  
PLS 2558  
RUNNING LAND SURVEYING  
700 DAUPHIN ST.  
LA CROSSE, WI 54603

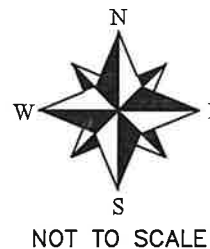
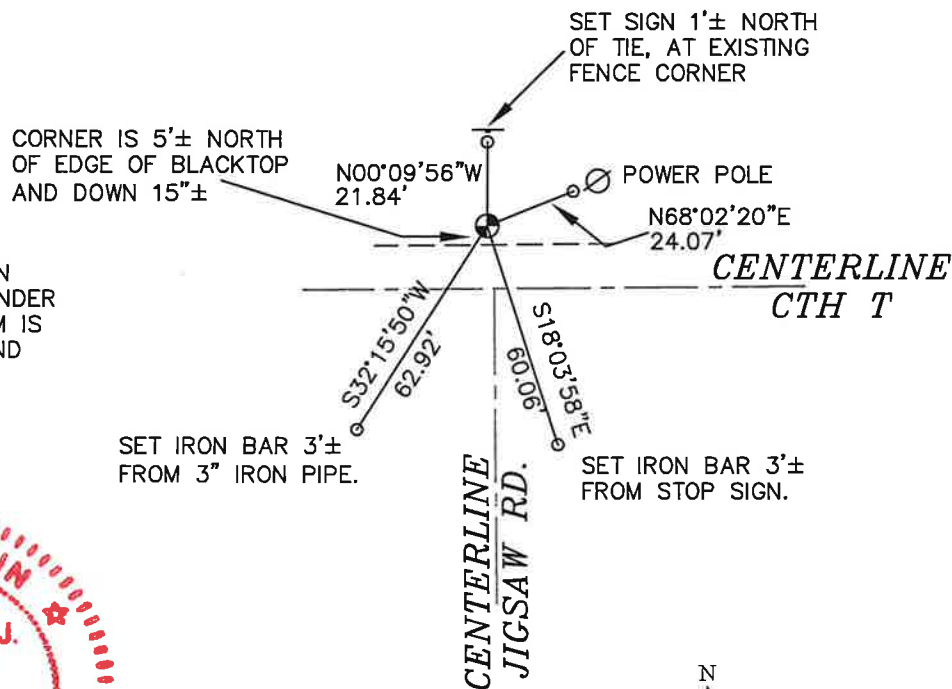


MONROE COUNTY COORDINATES NAD 83(2011)  
NORTHING: 358096.3390  
EASTING: 682817.5968

**SECTION 3, T16N, R2W,  
TOWN OF RIDGEVILLE  
MONROE COUNTY  
WISCONSIN.**



● CORNER LOCATION



LEGEND

- FOUND 1" SQUARE IRON BAR
- SET 3/4" X 18" IRON BAR 1.5 LB/FT UNLESS NOTED

ALL BEARINGS ARE REFERENCED TO THE MONROE COUNTY COORDINATE SYSTEM NAD 83(2011)

I, William C. Jung, do hereby certify that on the 30th day of June 1975, I found ~~(evidence)~~ (no evidence) of the S 1/16 Cor. - SE 1/4 corner of Section 3, T 16 N, R 2 W, Fourth Principal Meridian, and I re-established said corner according to the Wisconsin Statutes as shown and described hereon.

History of original corner establishment:

Description of corner evidence found:

Dated this 6th day of Feb. 1978.

Split distance between S 1/4 Corner and the SE Corner.

William C. Jung, R.L.S. 1323

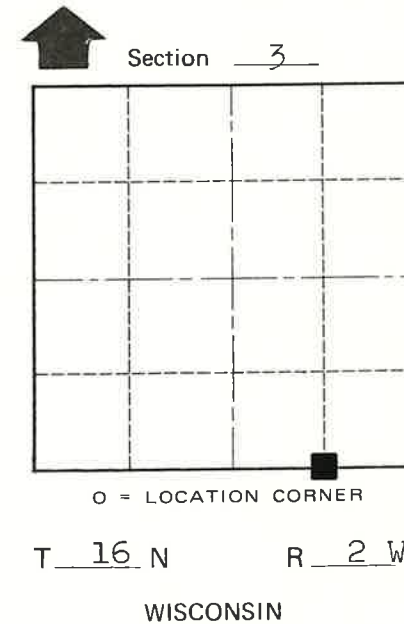
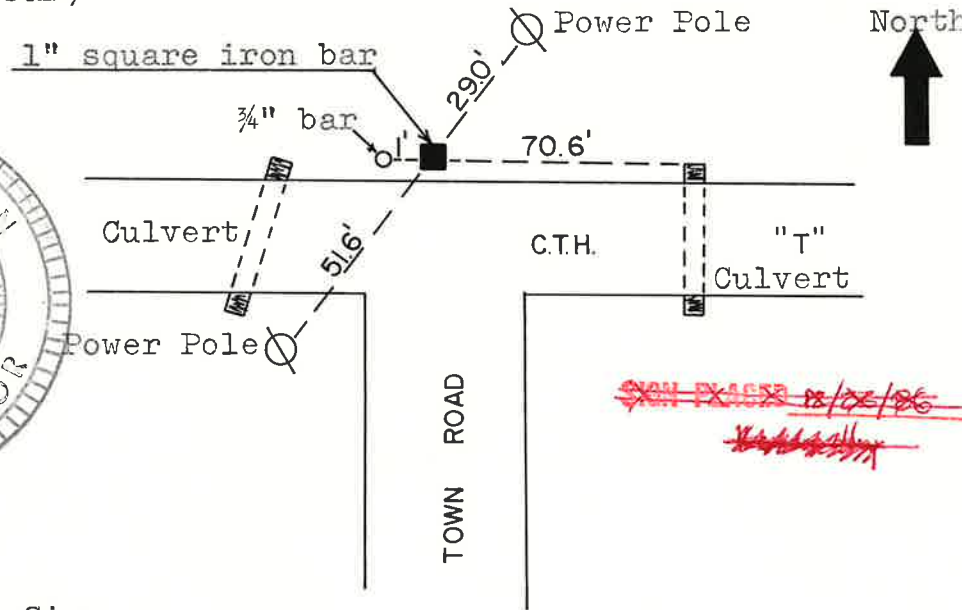
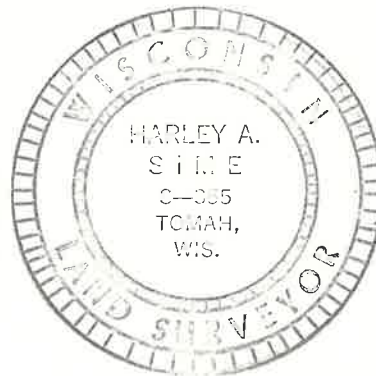
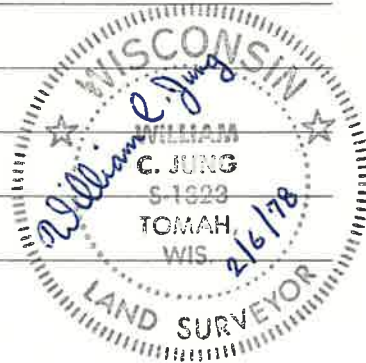
Crew Chief, County Surveyor's  
Title Office

Description of corner and witness monuments, references and accessories used to perpetuate the original or re-established location of this corner:

Set 1" square iron bar, 1' East of 3/4" iron bar, 5.7' North of edge of asphalt and 6' East of culvert.

Witnesses to corner location:

\_\_\_\_\_  
W. Jung  
\_\_\_\_\_  
A. Lueck  
\_\_\_\_\_  
G. Dechant



COUNTY SURVEYOR FORM NO. 1

SURVEY CONTROL ORDER

Horizontal	_____
Vertical	_____

Approved by: Harley A. Sime  
County Surveyor

WISCONSIN COORDINATE SYSTEM

Corner	East (X)	North (Y)	Elevation (Z)	Zone
Control Sta. Name				

City, Village or Town Ridgeville  
County of Monroe