

U.S. PUBLIC LAND SURVEY MONUMENT RECORD

ROMPORTL #21602022000

HISTORY OF CORNER ESTABLISHMENT SINCE THE ORIGINAL GOVERNMENT SURVEY
SEE PREVIOUS TIE SHEET.

DESCRIPTION OF CORNER EVIDENCE FOUND
FOUND AND ACCEPTED HARRISON AS SET BY DECHANT AND MEYER, VERIFIED EXISTING TIES AND TOOK NEW TIES AS SHOWN.

CREW/WITNESS FOR CORNER LOCATION
-CHRISTIAN J. RUNNING
-LEIGH A. RUNNING

FIELD WORK COMPLETED 10/23/2023

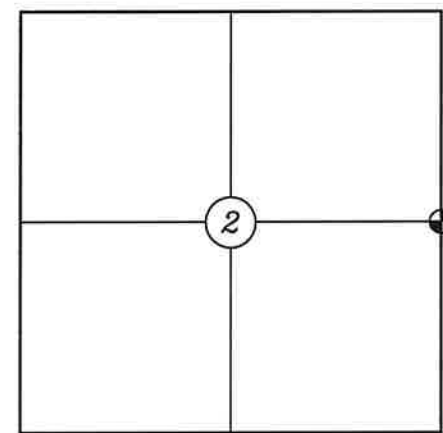
I, CHRISTIAN J. RUNNING RLS 2558, HEREBY CERTIFY THAT THE COORDINATES PROVIDED ON THIS RECORD WERE DETERMINED BY ME OR UNDER MY DIRECT SUPERVISION AND THAT THIS FORM IS CORRECT TO THE BEST OF MY KNOWLEDGE AND BELIEF.

CHRISTIAN J. RUNNING
PLS 2558
RUNNING LAND SURVEYING
700 DAUPHIN ST.
LA CROSSE, WI 54603

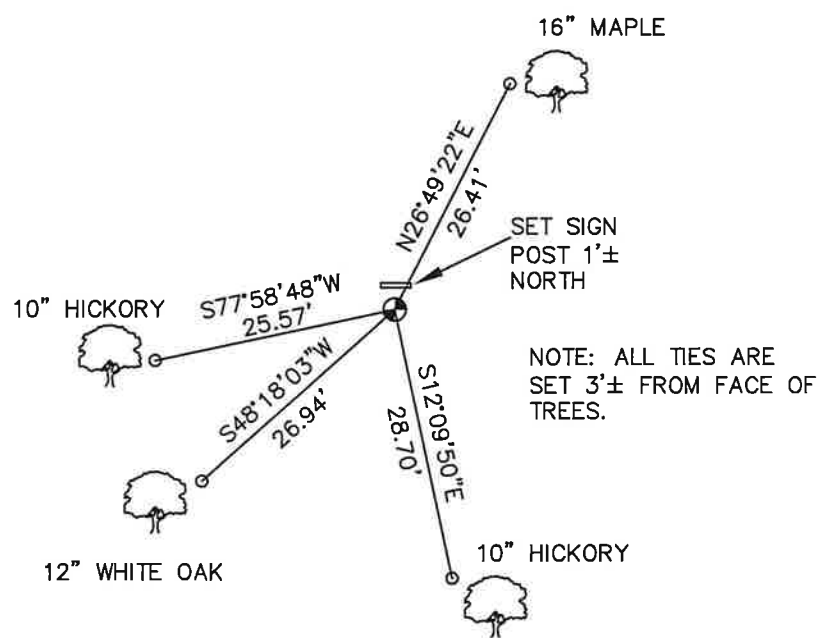


MONROE COUNTY COORDINATES NAD 83(2011)
NORTHING: 360754.2151
EASTING: 689438.5776

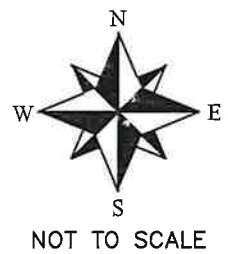
SECTION 2, T16N, R2W,
TOWN OF RIDGEVILLE
MONROE COUNTY
WISCONSIN.



● CORNER LOCATION



NOTE: ALL TIES ARE SET 3'± FROM FACE OF TREES.



LEGEND

- FOUND HARRISON MONUMENT
- SET 3/4" X 18" IRON BAR 1.5 LB/FT UNLESS NOTED

ALL BEARINGS ARE REFERENCED TO THE MONROE COUNTY COORDINATE SYSTEM NAD 83(2011)

I, Harley A. Sime, do hereby certify that on the 5th day of March 1981, I found (evidence) (~~no evidence~~) of the E/4 corner of Section 2, T 16 N, R 2 W Fourth Principal Meridian, and I re-established said corner according to the Wisconsin Statutes as shown and described hereon.

Dated this 9th day of March 1981.

Harley A. Sime, R.L.S. 355

County Surveyor
Title

History of corner establishment since Original Government Survey
Schroeder was here in 1895.(?)

Description of corner evidence found:

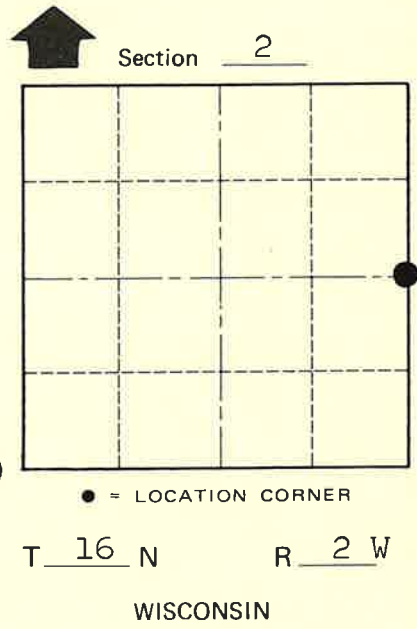
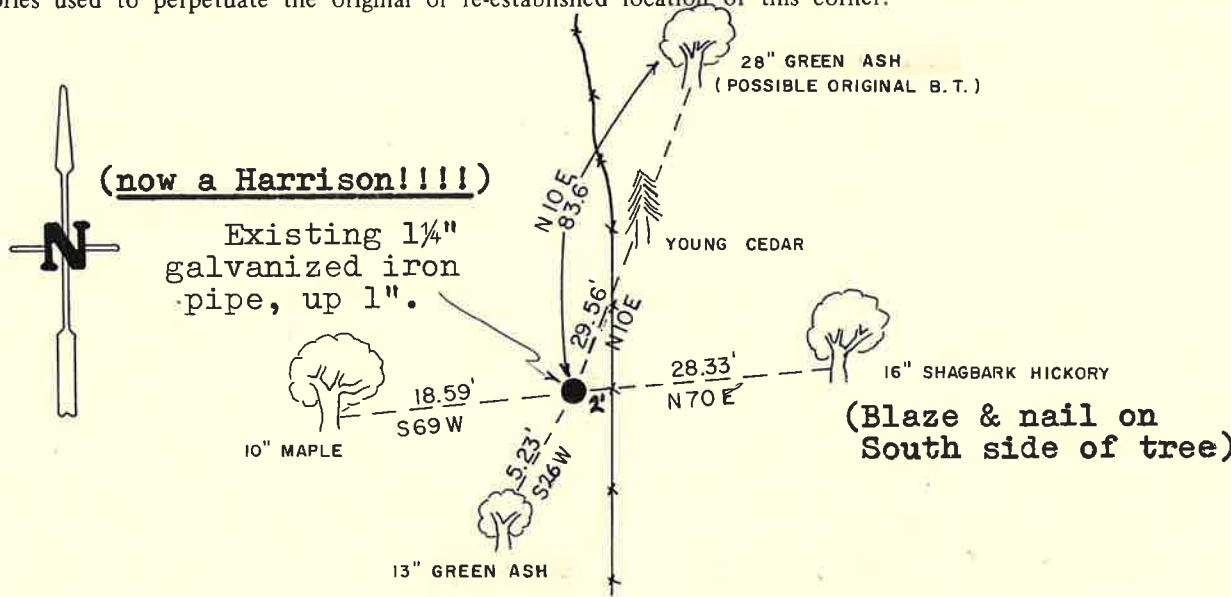
Found an unrecorded iron pipe and accepted it as it fits occupied fences. Also may have found an original bearing tree. The original notes call for a 7" Black Oak, N10E, 124 lks. We found a 28" Green Ash which fits this bearing and distance from the existing iron pipe. It is possible that this may be the original tree if the original surveyors confused there trees which could be the case as the original survey was done in the fall of 1847. Green Ash and Black Oak do look somewhat alike in the fall after the leaves drop.

Corner update: July 3, 1981 Crew: Dechant and Meyer
Replaced iron pipe with Harrison

Description of corner and witness monuments, references and accessories used to perpetuate the original or re-established location of this corner:

Witnesses to corner location:

G. Dechant
B. Meyer
C. Pietz



Approved: HARLEY A. SIME
MONROE CO. SURVEYOR

SURVEY CONTROL ORDER

Horizontal _____
Vertical _____

(Trees double blazed with nails set except for those trees at N10E have no blaze or nail)

WISCONSIN COORDINATE SYSTEM

Corner	East (X)	North (Y)	Elevation (Z)	Zone
Control Sta. Name				

City, Village or Town Ridgeville
County of Monroe

COUNTY SURVEYOR FORM NO. 1