

U.S. PUBLIC LAND SURVEY MONUMENT RECORD

ROMPORTL #21602020020

HISTORY OF CORNER ESTABLISHMENT SINCE THE ORIGINAL GOVERNMENT SURVEY
SEE PREVIOUS TIE SHEET.

*SECTION 2, T16N, R2W,
TOWN OF RIDGEVILLE
MONROE COUNTY
WISCONSIN.*

DESCRIPTION OF CORNER EVIDENCE FOUND

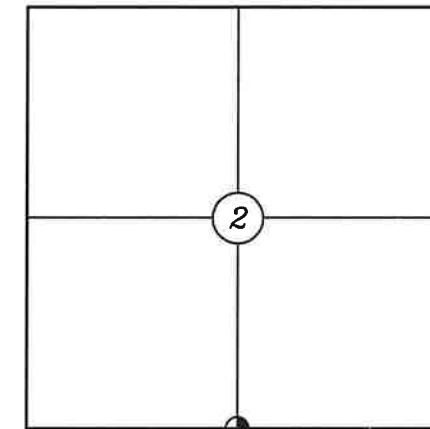
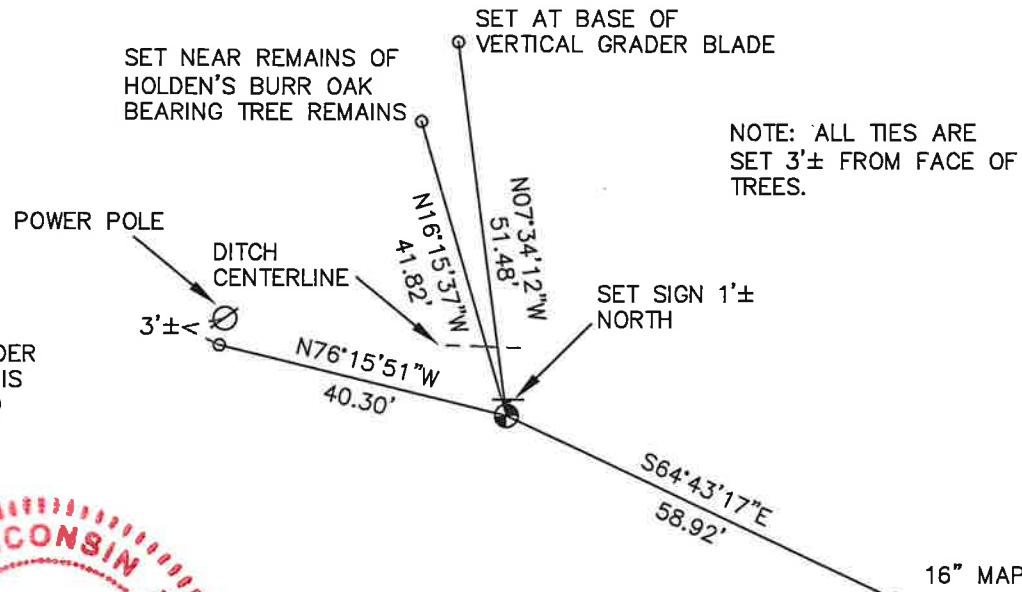
FOUND AND ACCEPTED HARRISON WITH TOP MISSING AS SET BY HARLEY SIME, VERIFIED EXISTING TIES AND TOOK NEW TIES AS SHOWN.

CREW/WITNESS FOR CORNER LOCATION
-CHRISTIAN J. RUNNING
-

FIELD WORK COMPLETED 10/09/2023

I, CHRISTIAN J. RUNNING RLS 2558, HEREBY CERTIFY THAT THE COORDINATES PROVIDED ON THIS RECORD WERE DETERMINED BY ME OR UNDER MY DIRECT SUPERVISION AND THAT THIS FORM IS CORRECT TO THE BEST OF MY KNOWLEDGE AND BELIEF.

CHRISTIAN J. RUNNING
PLS 2558
RUNNING LAND SURVEYING
700 DAUPHIN ST.
LA CROSSE, WI 54603



● CORNER LOCATION



LEGEND

- FOUND HARRISON, TOP MISSING
- SET 3/4" X 18" IRON BAR 1.5 LB/FT UNLESS NOTED

ALL BEARINGS ARE REFERENCED TO THE MONROE COUNTY COORDINATE SYSTEM NAD 83(2011)

MONROE COUNTY COORDINATES NAD 83(2011)
NORTHING: 358103.5910
EASTING: 686833.7941

I, Harley A. Sime, do hereby certify that on the 4th day of June 1979 I found (evidence) (~~no evidence~~) of the North 1/4 corner of Section 11, T16 N, R2 W Fourth Principal Meridian, and I re-established said corner according to the Wisconsin Statutes as shown and described hereon.

Dated this 6th day of Jan. 1981.

Harley A. Sime - R.L.S. 355

County Surveyor, Monroe County, Wisconsin
Title

History of corner establishment since Original Government Survey

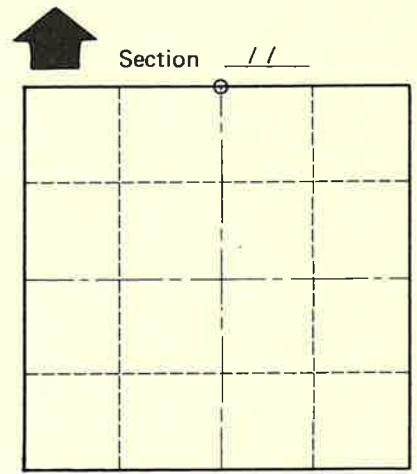
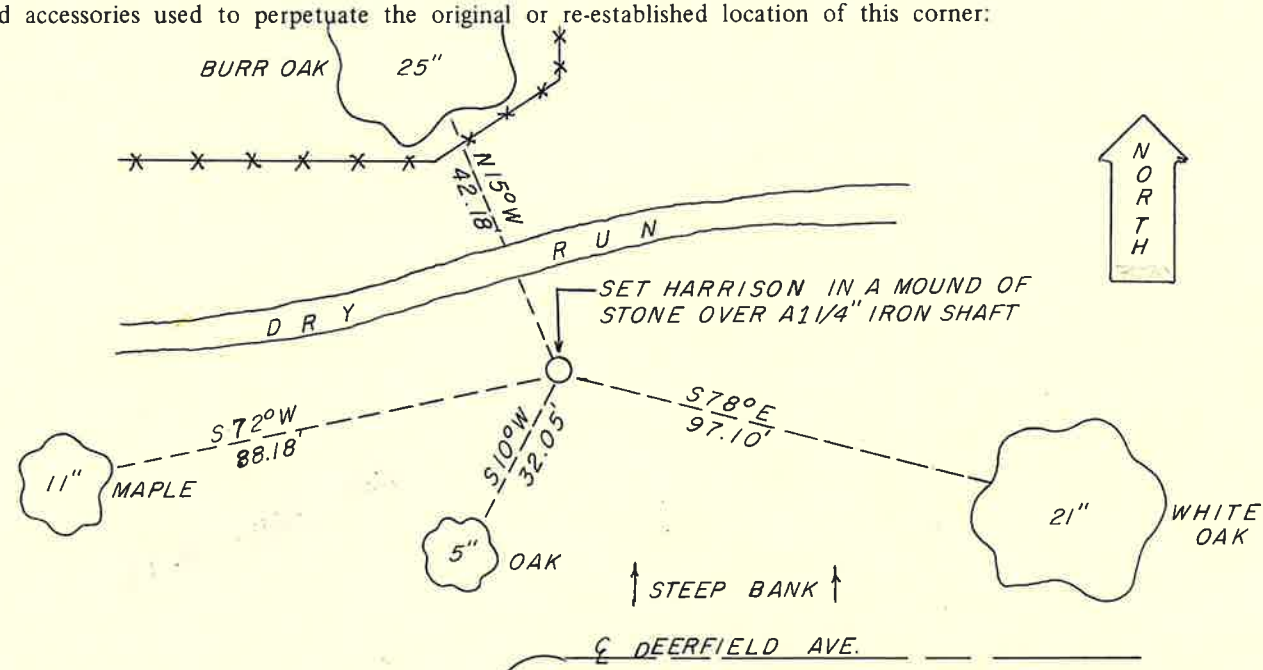
Schroeder was here in 1895. LaRue was here in September of 1897 and set a wood post and 2 new bearing trees; 9" S 25° W 50 links, and 8" Burr Oak N15° W, 80 links. Holden was here in February of 1905. He found LaRue's Burr Oak bearing tree and set a 1 1/4" steel shaft. 2 new bearing trees; 5" Burr Oak N 15° 30' W 66 links
Description of corner evidence found: 12" White Oak S9° W 93.5 links

Found steel shaft set by Holden. Also found one of Holdens bearing trees. (Burr Oak)
Set Harrison monument over the top of the shaft.

COUNTY SURVEYOR FORM NO. 1

Description of corner and witness monuments, references and accessories used to perpetuate the original or re-established location of this corner:

Witnesses to corner location:
R. Hayden
C. Pietz



Approved: HARLEY A. SIME
MONROE CO. SURVEYOR

Horizontal	_____
Vertical	_____

WISCONSIN COORDINATE SYSTEM

Corner	East (X)	North (Y)	Elevation (Z)	Zone
Control Sta. Name				

City, Village or Town of Ridgeville
County of Monroe
Wisconsin