

U. S. Public Land Corner Maintenance

78

Corner: E1/4 Sec. 22, T19N-R2W

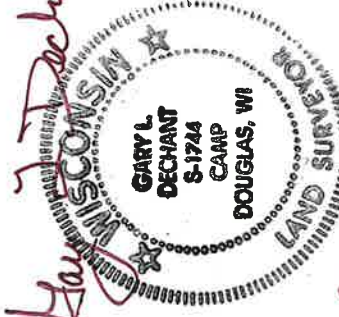
21902222000

Date	Crew	Monument type
August 18, 2023	Zachariah P. Dechant Gary L. Dechant	Found 1" round iron bar in small mound of rocks 1.5' NE of 1982 bearing tree. Steel post 1' north. 65' north of trail/logging road.

References:

- 1) Set 5/8"x24" round rebar south side of rock outcrop
- 2) Set 5/8"x24" round rebar, 4' west of 4" Red Pine
- 3) Set 5/8"x24" round rebar, 4' NW of 12" Red Pine
- 4) Set 5/8"x24" round rebar east side of rock outcrop

Compass bearings
Trees double blazed



August 19, 2023

I, William C. Jung, do hereby certify that on the 11th day of September 19 82, I found (evidence) ~~no evidence~~ of the East 1/4 corner of Section 22, T 19 N, R 2 W Fourth Principal Meridian, and I re-established said corner according to the Wisconsin Statutes as shown and described hereon.

Dated this 23rd day of Feb. 19 83.

William C. Jung

Deputy County Surveyor

Title

History of corner establishment since Original Government Survey

A survey crew from Harley Sime's office set an iron bar at this corner in 1974.

Description of corner evidence found:

I found a 1" round iron bar at the corner. I could not set a Harrison marker because of bedrock. The iron bar remains as the corner.

See Reverse Side For Maintenance

**Approved: HARLEY A. SIME
MONROE CO. SURVEYOR**

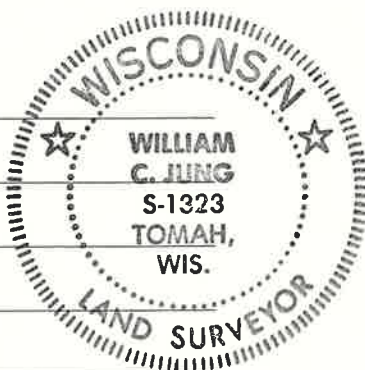
COUNTY SURVEYOR FORM NO. 1

Description of corner and witness monuments, references and accessories used to perpetuate the original or re-established location of this corner:

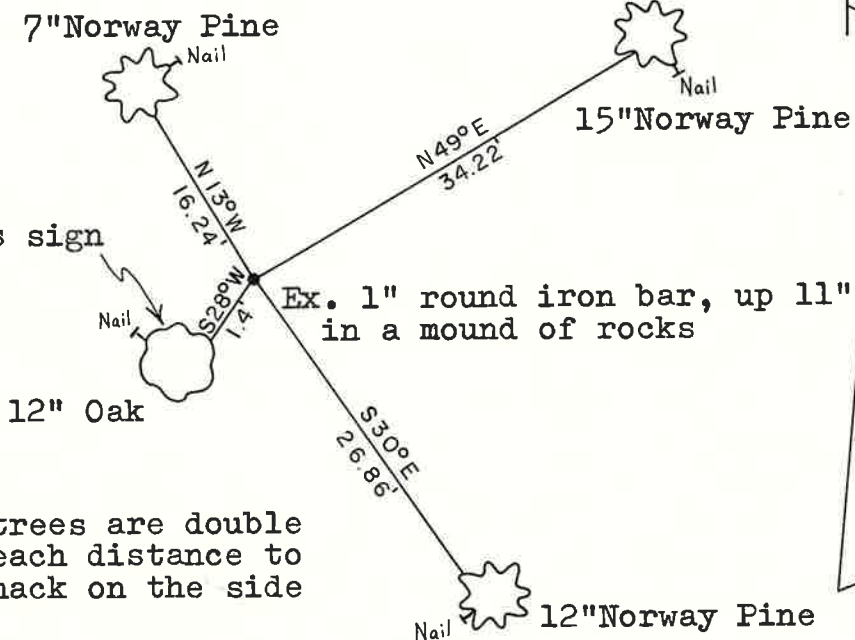
Witnesses to corner location:

William C. Jung

Bryan Meyer

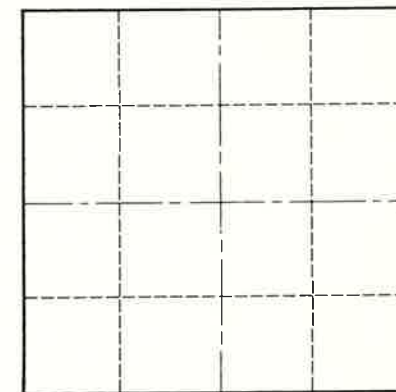


Survey witness sign on tree



Note: All bearing trees are double blazed with each distance to a nail in a hack on the side of the tree

Section 22



● = LOCATION CORNER

T 19 N R 2 W
WISCONSIN

SURVEY CONTROL ORDER

Horizontal	_____
Vertical	_____

WISCONSIN COORDINATE SYSTEM

Corner	East (X)	North (Y)	Elevation (Z)	Zone
Control Sta. Name				

~~City/Village of~~ Town Grant
County of Monroe