

U. S. Public Land Corner Maintenance

45

Corner: SE Sec. 10, T19N-R2W

21902100000

<u>Date</u>	<u>Crew</u>	<u>Monument type</u>
August 18, 2023	Zachariah P. Dechant Gary L. Dechant	Found rectangular stone (+) in remnants of north-south fence. Existing 3/4" round iron bar witness marker on east side. Old survey post & sign south of stone.

References:

- 1) Set 5/8"x24" round rebar 5' west of 16" White Oak
- 2) Set 5/8"x24" round rebar, 5' NW of 6" Maple
- 3) Set 5/8"x24" round rebar, 4' SE of 12" White Oak
- 4) Set 5/8"x24" round rebar, 4' SE of 12" Maple

<u>Bearing</u>	<u>Distance</u>
S85E	43.72'
S17E	24.55'
N80W	34.50'
N10W	37.34'

Compass bearings
Trees double blazed



I, Bryan H. Meyer, do hereby certify that on the 18th day of August 1983, I found (evidence) ~~the evidence~~ of the Southeast corner of Section 10, T 19 N, R 2 W Fourth Principal Meridian, and I re-established said corner according to the Wisconsin Statutes as shown and described hereon.

Dated this 22nd day of Dec. 1983.

Bryan H. Meyer
Deputy County Surveyor
Title

History of corner establishment since Original Government Survey

Fred Holden was here in April of 1902 and apparently set a stone with an "X" mark. Mr. Holden was here again in May of 1908. C. M. Keach was here in November of 1914 and found Holden's stone.

Description of corner evidence found:

I found Mr. Holden's stone with "X" mark and an "S" clearly visible on top. The stone is 30'+ South of a 3-way fence corner. I also found Mr. Holden's White Oak bearing tree alive and well (now a 17") and the remains of his Black Oak bearing tree stump.



See Reverse Side For Maintenance

COUNTY SURVEYOR FORM NO. 1

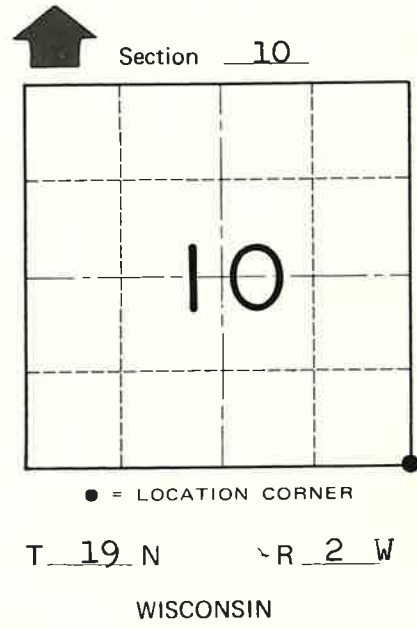
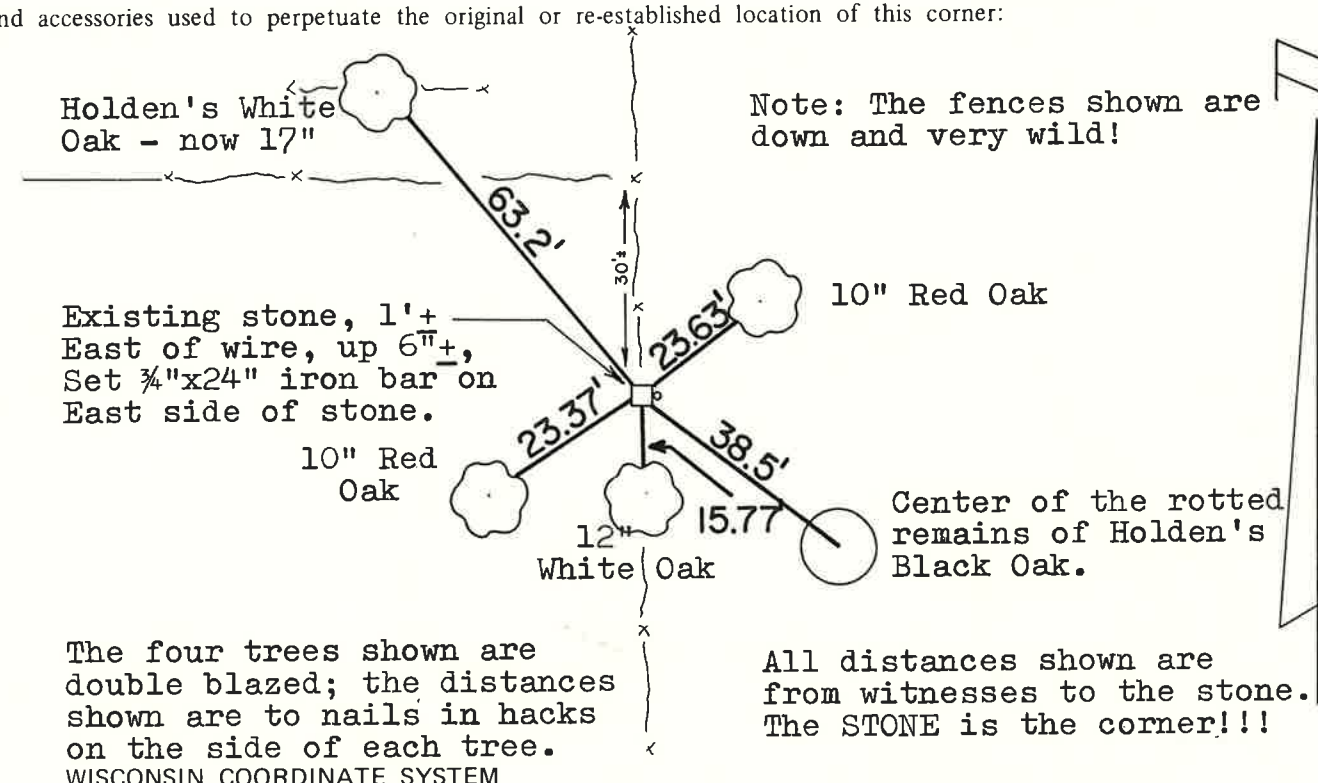
Description of corner and witness monuments, references and accessories used to perpetuate the original or re-established location of this corner:

Crew: Meyer, Wilhite
Date: August 18, 1983
Weather: P. Cloudy, Humid, 85°±.
Witnesses to corner location:

Bryan H. Meyer

Dallas Wilhite

APPROVED: Harley A. Sime
Monroe County Surveyor



The four trees shown are double blazed; the distances shown are to nails in hacks on the side of each tree.
WISCONSIN COORDINATE SYSTEM

All distances shown are from witnesses to the stone. The STONE is the corner!!!

SURVEY CONTROL ORDER

Horizontal	_____
Vertical	_____

Corner	East (X)	North (Y)	Elevation (Z)	Zone
Control Sta. Name				

~~City/Village of~~ Town of Grant
County of Monroe