

U. S. Public Land Corner Maintenance

47

Corner: SW Sec. 10, T17N-R4W

21704090000

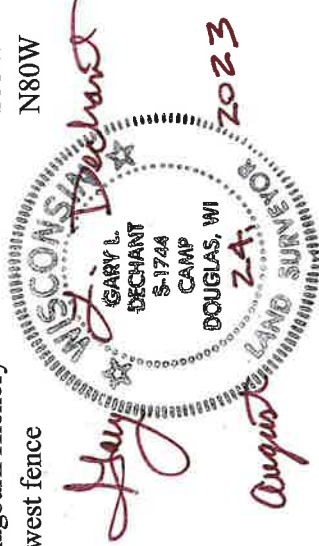
<u>Date</u>	<u>Crew</u>	<u>Monument type</u>
August 22, 2023	Zachariah P. Dechant Gary L. Dechant	Found 1 1/4" shaft, up 4" on south side of 20" dead Birch at remains of fence corner. This shaft replaced a broken Harrison as per Volume 23 CSM P 68, Doc. No. 59594 recorded June 11, 2009.

References:

- 1) Set 5/8"x24" round rebar, 4' SW of 4" Maple
- 2) Set 5/8"x24" round rebar, 5' west of 23" Red Oak
- 3) Set 5/8"x24" round rebar, 5' NE of 12" Shagbark Hickory
- 4) Set 5/8"x24" round rebar 6' north of east-west fence

Compass bearings
Trees double blazed
Stone over rebars

<u>Bearing</u>	<u>Distance</u>
N30E	21.79'
S79E	18.45'
S53W	26.60'
N80W	19.57'



CERTIFICATE

CERTIFIED LAND CORNER

No. 47

I, Harley A. Sime, do hereby certify that on the 6 day of May 1975, I found (evidence) (~~no evidence~~) of the S.W. corner of Section 10, T 17 N, R 4W Fourth Principal Meridian, and I re-established said corner according to the Wisconsin Statutes as shown and described hereon.

History of original corner establishment:

See Reverse Side For Maintenance

Description of corner evidence found:

Dated this 15 day of Jan. 1976.

Harley A. Sime
County Surveyor
Title

Found a well point at the fence corner identical to other well points found in the township. The corner fits conditions and neighboring sections. To our knowledge the well point was not on record. Accepted the well point as the corner, removed it, and replaced it with a Harrison marker.

3/12/81
Apparently the well point was set by Keach in June of 1909.

Description of corner and witness monuments, references and accessories used to perpetuate the original or re-established location of this corner:

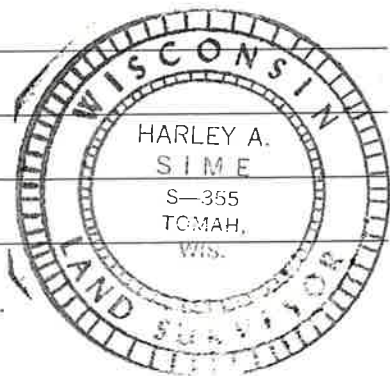
Set a Harrison at the fence corner, up 2".

Witnesses to corner location:

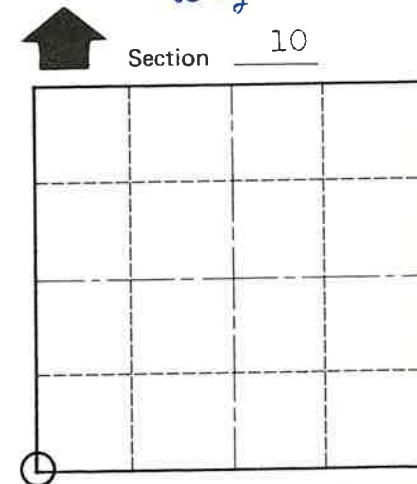
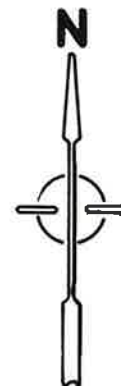
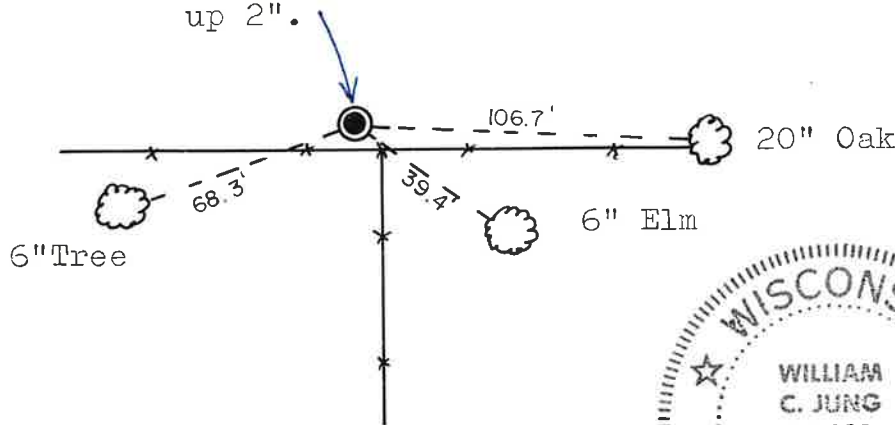
W.C. Jung - Crew Chief *W.C. Jung*

D. Malliet

A. Lueck



Removed existing Well Point
Set Harrison in same place,
up 2".



O = LOCATION CORNER

T 17 N R 4W
WISCONSIN

COUNTY SURVEYOR FORM NO. 1

SURVEY CONTROL ORDER

Horizontal _____
Vertical _____

WISCONSIN COORDINATE SYSTEM

Corner	East (X)	North (Y)	Elevation (Z)	Zone
Control Sta. Name				



City, Village or Town Sparta
County of Monroe