

# U. S. Public Land Corner Maintenance

# 107

Corner: NW Sec. 34, T17N-R2W

21702280000

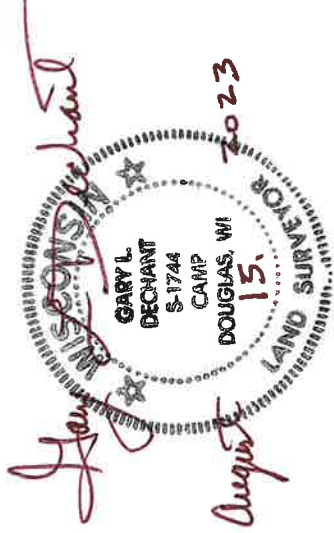
<u>Date</u>	<u>Crew</u>	<u>Monument type</u>
August 10, 2023	Zachariah P. Dechant Gary L. Dechant	Found Harrison monument, top broke off, east side of trail. Old Sign post on SE side of Harrison

References:

- 1) Set 5/8"x24" round rebar, 4' SW of 12" Maple
- 2) Set 5/8 "x24" round rebar, 4' NW of 9" Maple
- 3) Set 5/8"x24" round rebar, 4' NE of 6" Maple
- 4) Set 5/8"x24" round rebar, 4' SE of 10" White Oak
- 5) Existing 3/4" round iron bar in downed north-south fence

Compass bearings  
Trees double blazed

<u>Bearing</u>	<u>Distance</u>
N45E	18.46'
S46E	29.80'
S44W	30.08'
N47W	37.10'
South	89.22'



I, Harley A. Sime, do hereby certify that on the 21 day of October 1977, I found ~~(evidence)~~ (no evidence) of the NW corner of Section 34, T17 N, R 2 W, Fourth Principal Meridian, and I re-established said corner according to the Wisconsin Statutes as shown and described hereon.

Dated this 6<sup>th</sup> day of Feb. 1978.

County Surveyor  
Title

History of original corner establishment:

Fred Holden was at this corner in April 1907.

Description of corner evidence found:

Set the corner equidistant between the W $\frac{1}{4}$  corner of Section 34 and the W $\frac{1}{4}$  corner of Section 27 (but not on line between said  $\frac{1}{4}$  corners), and at a distance from the N $\frac{1}{4}$  corner of Section 34 (almost) equivalent to the distance along the north line of the NE $\frac{1}{4}$  of said Section 34.

Description of corner and witness monuments, references and accessories used to perpetuate the original or re-established location of this corner:

Set Harrison Monument

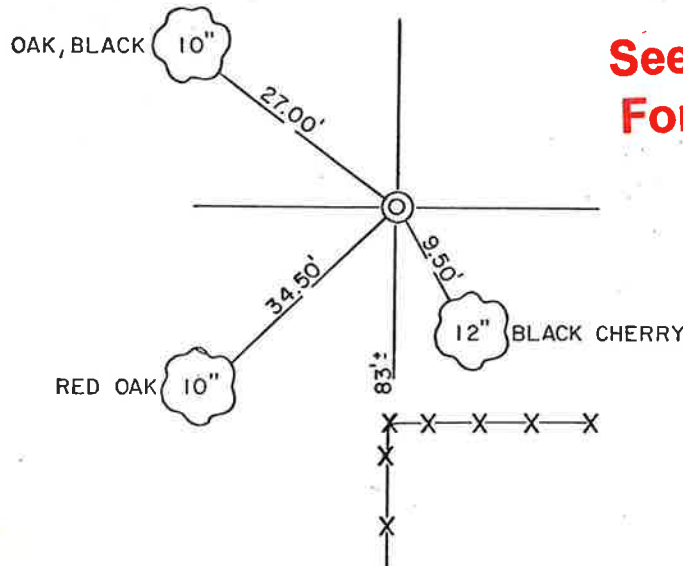
Trees blazed and nail and cap set.

Witnesses to corner location:

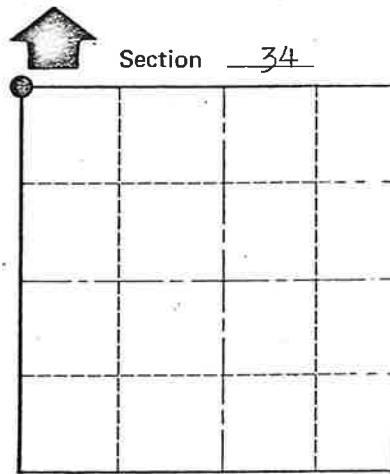
C. Pietz, Crew Chief

G. Sime

G. Dechant



**See Reverse Side For Maintenance**



O = LOCATION CORNER

T 17 N R 2 W

WISCONSIN

COUNTY SURVEYOR FORM NO. 1

SURVEY CONTROL ORDER

Horizontal	
Vertical	

WISCONSIN COORDINATE SYSTEM

Corner	East (X)	North (Y)	Elevation (Z)	Zone
Control Sta. Name				

City, Village or Town Adrian

County of Monroe