

U.S. PUBLIC LAND SURVEY MONUMENT RECORD

HISTORY OF CORNER ESTABLISHMENT SINCE THE ORIGINAL GOVERNMENT SURVEY
SEE PREVIOUS TIE SHEET.

DESCRIPTION OF CORNER EVIDENCE FOUND
FOUND AND ACCEPTED ANGLE IRON FENCE CORNER.

CREW/WITNESS FOR CORNER LOCATION
-CHRISTIAN J. RUNNING
-LEIGH A. RUNNING

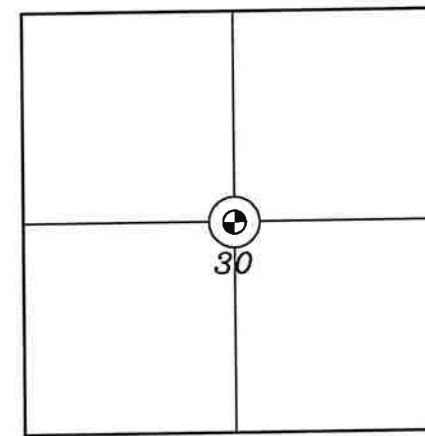
FIELD WORK COMPLETED 8/02/2023

I, CHRISTIAN J. RUNNING RLS 2558, HEREBY CERTIFY THAT THE COORDINATES PROVIDED ON THIS RECORD WERE DETERMINED BY ME OR UNDER MY DIRECT SUPERVISION AND THAT THIS FORM IS CORRECT TO THE BEST OF MY KNOWLEDGE AND BELIEF.

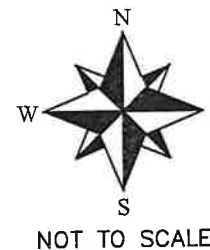
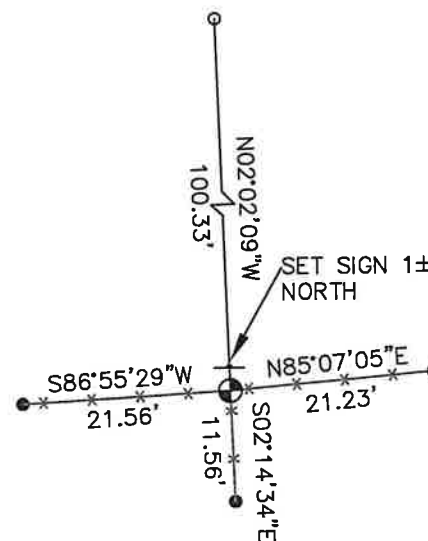
CHRISTIAN J. RUNNING
PLS 2558
RUNNING LAND SURVEYING
700 DAUPHIN ST.
LA CROSSE, WI 54603



SECTION 30, T15N, R1E,
TOWN OF GLENDALE
MONROE COUNTY
WISCONSIN.



● CORNER LOCATION



LEGEND

- FOUND ANGLE IRON
- SET 3/4" X 18" IRON BAR 1.5 LB/FT UNLESS NOTED
- FOUND 3/4" IRON BAR

ALL BEARINGS ARE REFERENCED TO THE MONROE COUNTY COORDINATE SYSTEM NAD 83(2011)

MONROE COUNTY COORDINATES NAD 83(2011)
NORTHING: 308205.1271
EASTING: 728919.0210

41501302020

I, William C. Jung, do hereby certify that on the 3rd day of August 1982, I found (evidence) ~~(no evidence)~~ of the Center 1/4 corner of Section 30, T 15 N, R 1 E Fourth Principal Meridian, and I re-established said corner according to the Wisconsin Statutes as shown and described hereon.

History of corner establishment since Original Government Survey

There is no recorded history of this corner.

Description of corner evidence found:

(See attached sheet, page 2.)

Dated this 27th day of Jan. 1983.

William C. Jung

Deputy County Surveyor

Title

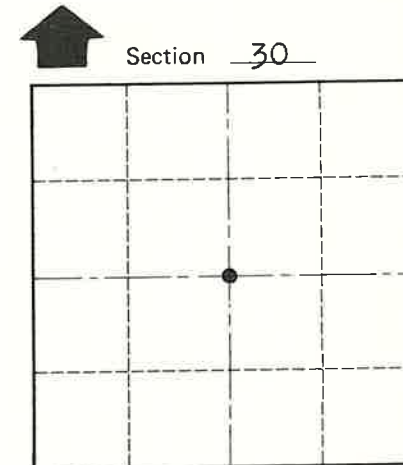
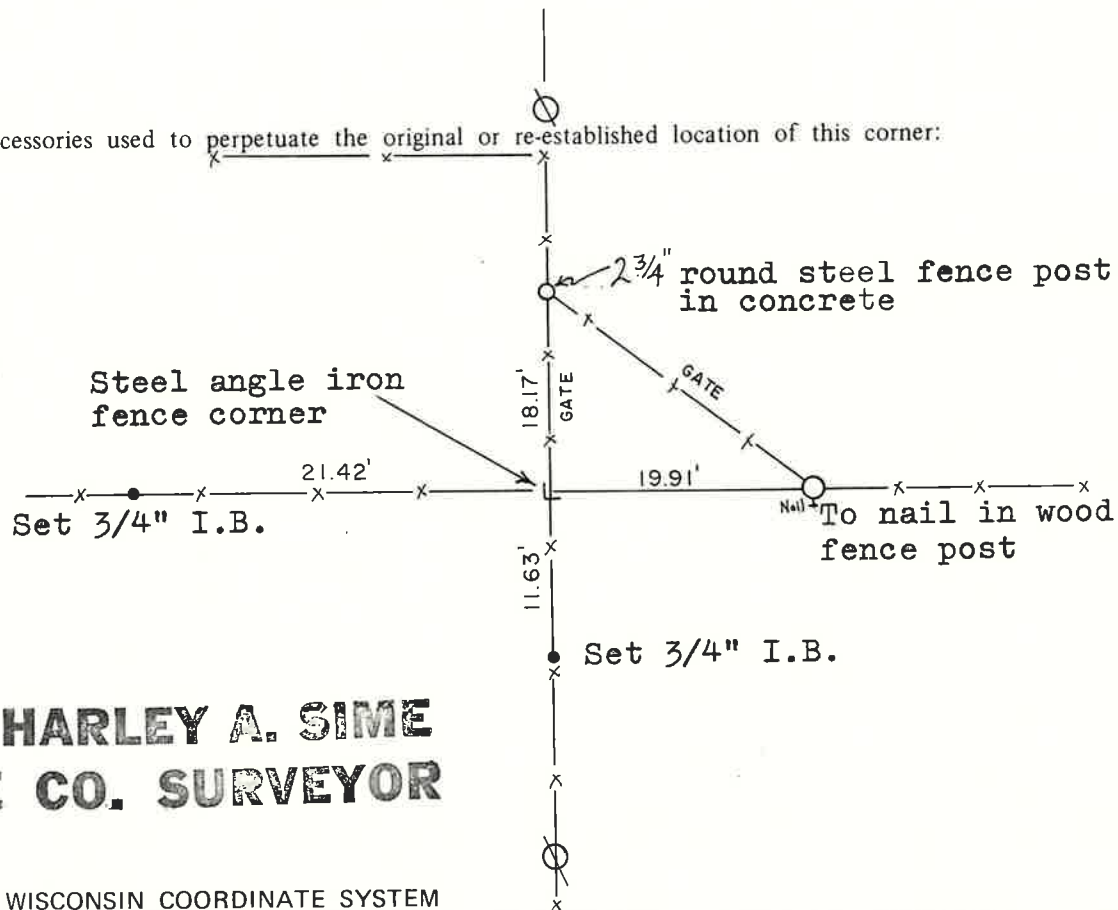
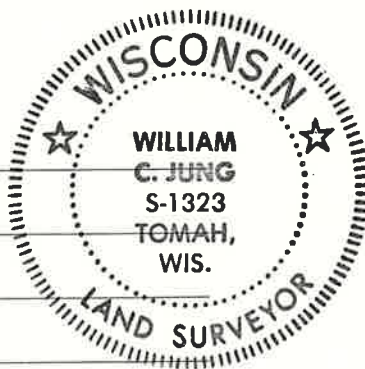
COUNTY SURVEYOR FORM NO. 1

Description of corner and witness monuments, references and accessories used to perpetuate the original or re-established location of this corner:

Witnesses to corner location:

Jung

Meyer



Approved: **HARLEY A. SIME**
MONROE CO. SURVEYOR

SURVEY CONTROL ORDER

Horizontal _____

Vertical _____

WISCONSIN COORDINATE SYSTEM

Corner	East (X)	North (Y)	Elevation (Z)	Zone
Control Sta. Name				

~~City, Village or~~ Town of Glendale

County of Monroe

Center 1/4 Corner-Section 30-T15N-R1E

I accepted an old occupied fence corner as evidence of an old Center 1/4 Corner set in an irregular method in an old unrecorded survey. I found this old (4) way fence corner to be almost exactly on line between the West 1/4 and East 1/4 Corners. Also, the old fence corner at the CE1/16 Corner was almost exactly on line and equidistant between the East 1/4 and occupied Center 1/4. As the Center 1/4 Corners in Sections 19 and 20 were set by Dahl in an irregular method in December of 1868, and since Monroe County has a history of sections being subdivided by irregular methods in unrecorded surveys, it is thus my opinion that this corner was set by a surveyor in an irregular manner in the past and has been occupied accordingly ever since. The existing evidence along the East-West 1/4 line fits too good to have been established by anyone but a surveyor. Considering the circumstances, I would consider it not only improper, but also an injustice to the local landowners to do anything but accept this as the Center 1/4 Corner.

