

U.S. PUBLIC LAND SURVEY MONUMENT RECORD

ROMPORTL #41501292020

HISTORY OF CORNER ESTABLISHMENT SINCE THE ORIGINAL GOVERNMENT SURVEY
SEE PREVIOUS TIE SHEET.

DESCRIPTION OF CORNER EVIDENCE FOUND
FOUND AND ACCEPTED STONE.

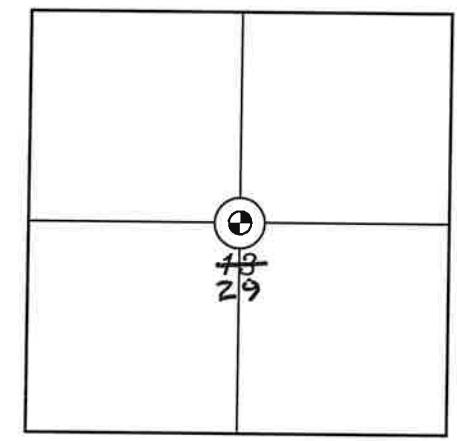
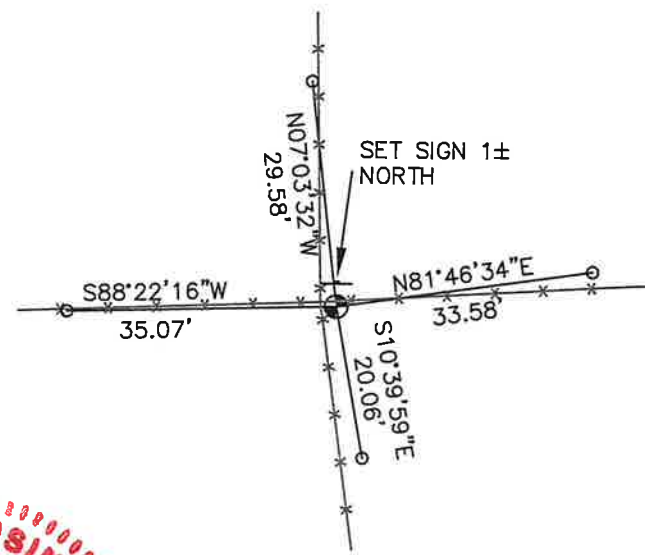
SECTION 29, T15N, R1E,
TOWN OF GLENDALE
MONROE COUNTY
WISCONSIN.

CREW/WITNESS FOR CORNER LOCATION
-CHRISTIAN J. RUNNING
-

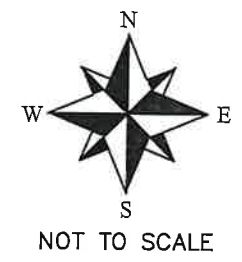
FIELD WORK COMPLETED 8/01/2023 AND
8-02-2023

I, CHRISTIAN J. RUNNING RLS 2558, HEREBY
CERTIFY THAT THE COORDINATES PROVIDED ON
THIS RECORD WERE DETERMINED BY ME OR UNDER
MY DIRECT SUPERVISION AND THAT THIS FORM IS
CORRECT TO THE BEST OF MY KNOWLEDGE AND
BELIEF.

CHRISTIAN J. RUNNING
PLS 2558
RUNNING LAND SURVEYING
700 DAUPHIN ST.
LA CROSSE, WI 54603



⊕ CORNER LOCATION



LEGEND

- ⊕ FOUND STONE
- SET 3/4" X 18" IRON BAR 1.5 LB/FT UNLESS NOTED

ALL BEARINGS ARE REFERENCED TO
THE MONROE COUNTY COORDINATE SYSTEM NAD 83(2011)

MONROE COUNTY COORDINATES NAD 83(2011) NORTHING: 308463.2027 EASTING: 734267.4187

41501292020

I, William C. Jung, do hereby certify that on the 15th day of March 1982, I found (evidence) ~~(no evidence)~~ of the 1/4 corner of Section 29, T 15 N, R 1 E Fourth Principal Meridian, and I re-established said corner according to the Wisconsin Statutes as shown and described hereon.

Dated this 18th day of March 1982.

William C. Jung, R.L.S. 1323

County Surveyor's Office

Title

William C. Jung



History of corner establishment since Original Government Survey

Fred Holden set a stone at this corner in May of 1904.

Description of corner evidence found:

I found Holden's stone in good condition.

Description of corner and witness monuments, references and accessories used to perpetuate the original or re-established location of this corner:

Witnesses to corner location:

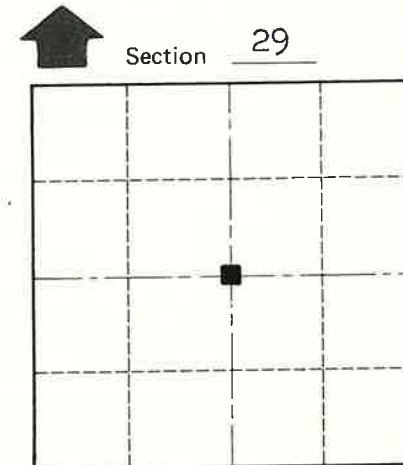
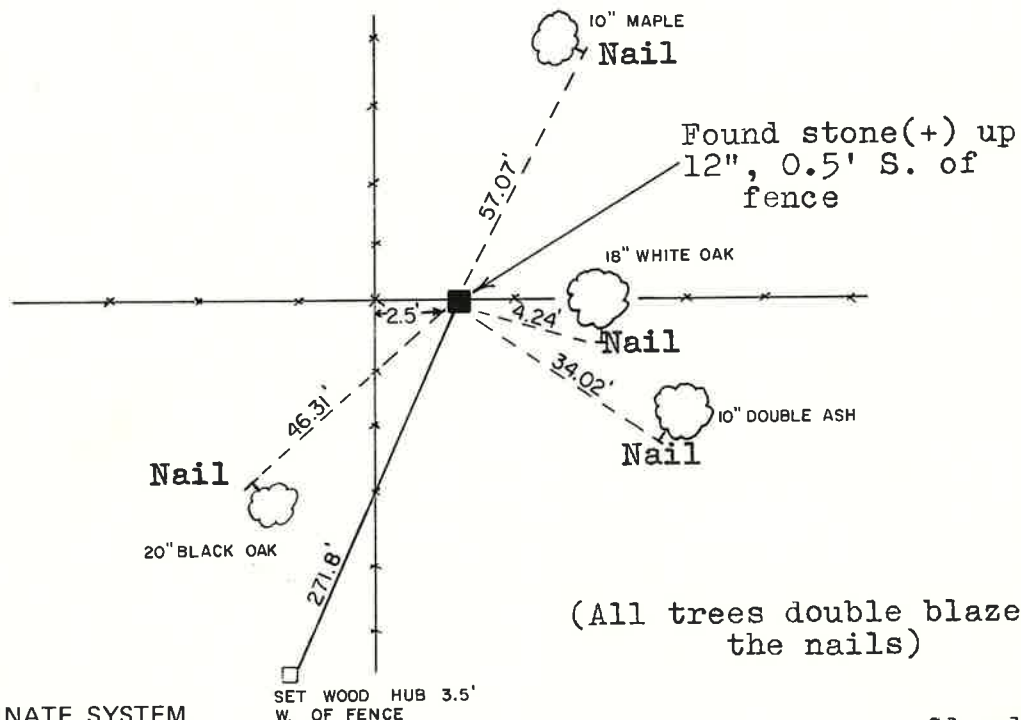
W. Jung

B. Meyer

G. Dechant

COUNTY SURVEYOR FORM NO. 1

Approved: **HARLEY A. SIME**
MONROE CO. SURVEYOR



■ = LOCATION CORNER

T 15 N R 1 E

WISCONSIN

(All trees double blazed, distances to the nails)

~~City, Village or~~ Town Glendale
County of Monroe
Wisconsin

SURVEY CONTROL ORDER

Horizontal _____

Vertical _____

WISCONSIN COORDINATE SYSTEM

Corner	East (X)	North (Y)	Elevation (Z)	Zone
Control Sta. Name				