

# U.S. PUBLIC LAND SURVEY MONUMENT RECORD

HISTORY OF CORNER ESTABLISHMENT SINCE THE ORIGINAL GOVERNMENT SURVEY  
SEE PREVIOUS TIE SHEET.

DESCRIPTION OF CORNER EVIDENCE FOUND  
FOUND AND ACCEPTED HARRISON MONUMENT.

CREW/WITNESS FOR CORNER LOCATION  
-CHRISTIAN J. RUNNING  
-LEIGH A. RUNNING

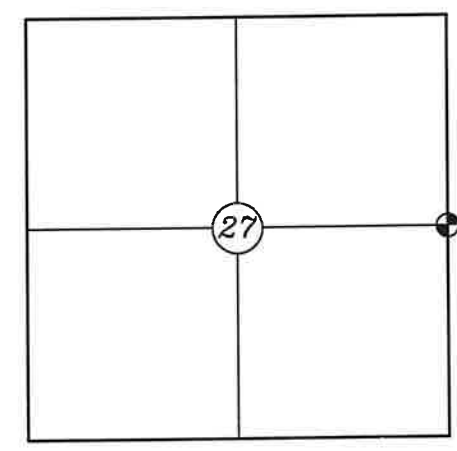
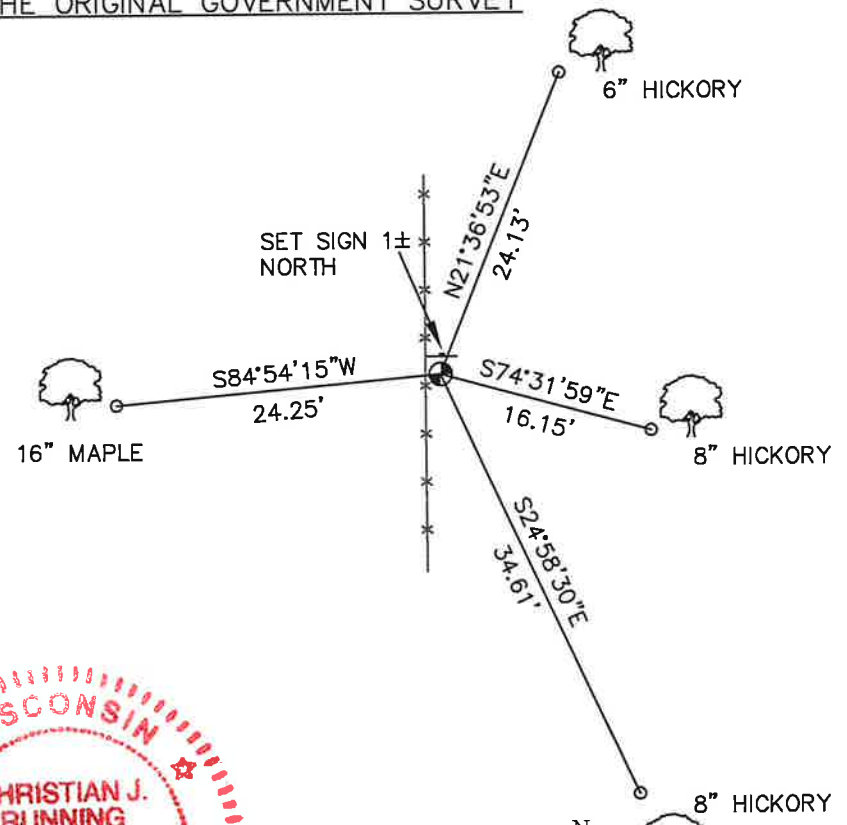
FIELD WORK COMPLETED 8/02/2023.

I, CHRISTIAN J. RUNNING RLS 2558, HEREBY CERTIFY THAT THE COORDINATES PROVIDED ON THIS RECORD WERE DETERMINED BY ME OR UNDER MY DIRECT SUPERVISION AND THAT THIS FORM IS CORRECT TO THE BEST OF MY KNOWLEDGE AND BELIEF.

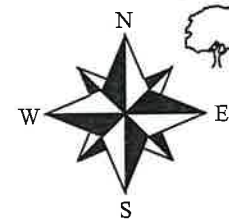
CHRISTIAN J. RUNNING  
PLS 2558  
RUNNING LAND SURVEYING  
700 DAUPHIN ST.  
LA CROSSE, WI 54603



SECTION 27, T15N, R1E,  
TOWN OF GLENDALE  
MONROE COUNTY  
WISCONSIN.



● CORNER LOCATION



NOT TO SCALE

LEGEND

- FOUND HARRISON
- SET 3/4 inch X 18 inch IRON BAR 1.5 LB/FT UNLESS NOTED

ALL BEARINGS ARE REFERENCED TO THE MONROE COUNTY COORDINATE SYSTEM NAD 83(2011)

MONROE COUNTY COORDINATES NAD 83(2011)  
NORTHING: 309673.5162  
EASTING: 747413.4753

CERTIFICATE

I, Bryan H. Meyer, do hereby certify that on the 27th day of July 1992, I found (evidence) ~~(no evidence)~~ of the East 1/4 corner of Section 27, T. 15 N, R. 1 E Fourth Principal Meridian, and I re-established said corner according to the Wisconsin Statutes as shown and described hereon.

Dated this 28th day of July 1992.

*Bryan H. Meyer*

Deputy County Surveyor

Title

CERTIFIED LAND CORNER

History of corner establishment since Original Government Survey

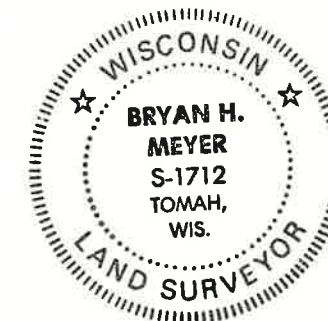
Fred Holden was here in March and April of 1905 and set an iron stake.

Description of corner evidence found:

I found a piece of an iron sleigh shoe, 3'± East of a North-South fence. This sleigh shoe is similar to others that I have found which were set by Holden. I believe this is Holden's monument and I accept this as the corner.

No. 98

41501272000



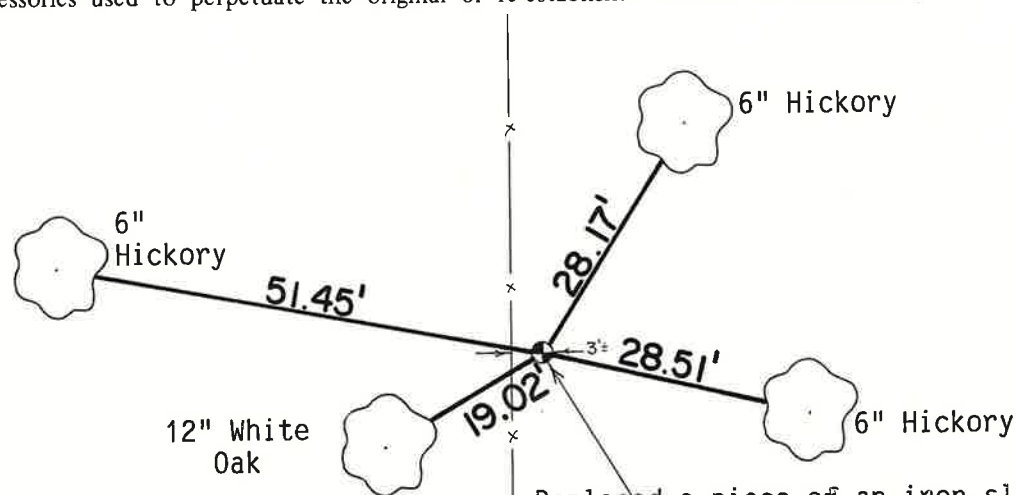
H. A. Sime and Associates  
P. O. Box 705  
Tomah, Wisconsin 54660  
Phone: (608)-372-5392

COUNTY SURVEYOR FORM NO. 1

Description of corner and witness monuments, references and accessories used to perpetuate the original or re-established location of this corner:

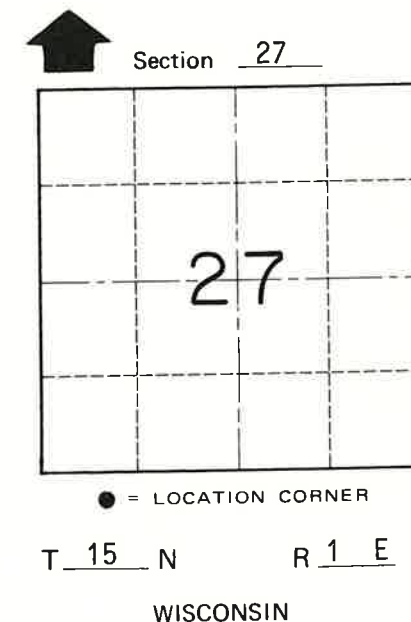
Crew: Kostka, Kenworthy, Meyer  
Date: July 27, 1992  
Weather: Partly Cloudy, 75°±  
Witnesses to corner location:

Brent Kostka  
John Kenworthy  
Bryan H. Meyer



Replaced a piece of an iron sleigh shoe with a Harrison marker, flush with the ground, 3'± east of fence. Set sign 3' West of the corner, in fence.

The four trees shown hereon are double blazed; the distance shown to each tree is to a nail set in a hack in the side of each tree.



SURVEY CONTROL ORDER

Horizontal	_____
Vertical	_____

WISCONSIN COORDINATE SYSTEM

Corner	East (X)	North (Y)	Elevation (Z)	Zone
Control Sta. Name				

~~City, Village or~~ Town of Glendale  
County of Monroe