

# U. S. Public Land Corner Maintenance

# 83

Corner: SE Sec. 23, T15N-R1E

41501230000

<u>Date</u>	<u>Crew</u>	<u>Monument type</u>
September 29, 2023	Zachariah P. Dechant Gary L. Dechant	Found 1 1/4" round iron bar in center of Ozone Road 113' south of culvert/creek, in line with fences east & west

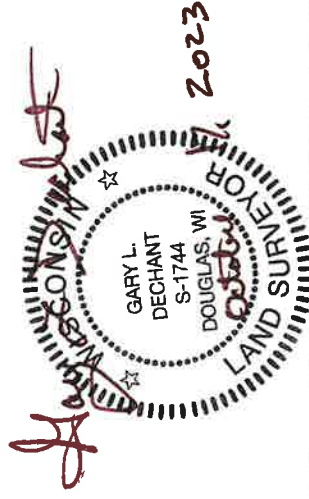
References:

- 1) Set 5/8"x24" round rebar, 4' west of 9" Black Walnut
- 2) Set 5/8"x24" round rebar
- 3) Set 5/8"x24" round rebar
- 4) Set 5/8"x24" round rebar, 5' SE 9" White Oak

<u>Bearing</u>	<u>Distance</u>
N78E	42.42'
S62E	52.38'
S78W	44.73
N62W	59.64'

Compass bearings

1/4" iron bar (N1/4) and reference markers set on straight lines.



I, Lawrence A. Feddersen, do hereby certify that on the 15th day of October 1982, I found (evidence) (~~no evidence~~) of the SE corner of Section 23, T. 15 N, R. 1 E Fourth Principal Meridian, and I re-established said corner according to the Wisconsin Statutes as shown and described hereon.

Dated this 22nd day of Nov. 1982.

Lawrence A. Feddersen

Registered Land Surveyor #1226  
Title

History of corner establishment since Original Government Survey

Fred Holden was here in November of 1906.

Description of corner evidence found:

Accepted intersection of road centerline and East-West fences as best available evidence. Fits 1/2 mile to the West well and matches Holden's 1/2 mile distance North by 1.5'±.

41501230000

Approved: **HARLEY A. SIME**  
**MONROE CO. SURVEYOR**

See Reverse Side  
For Maintenance

COUNTY SURVEYOR FORM NO. 1

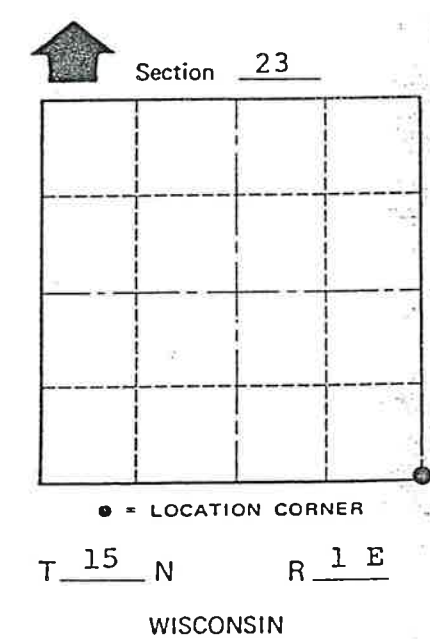
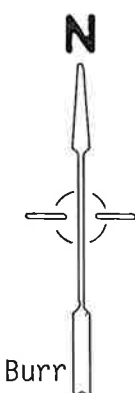
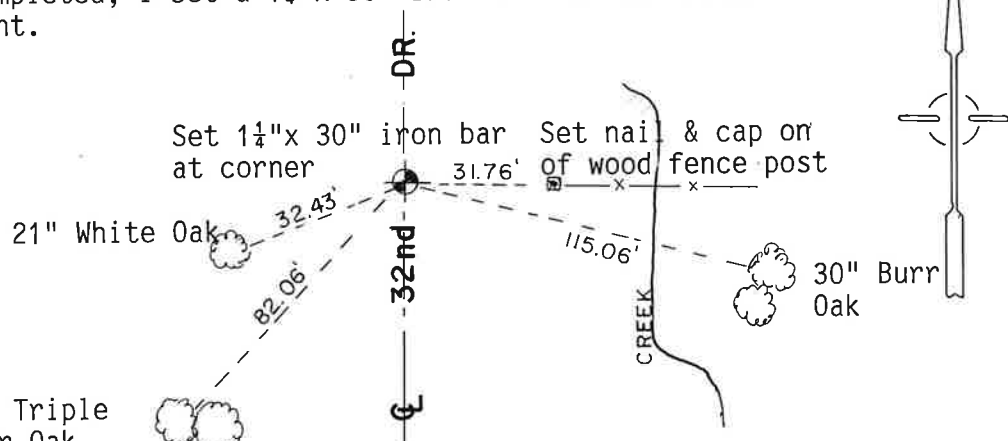
Description of corner and witness monuments, references and accessories used to perpetuate the original or re-established location of this corner:

Note: Prior to road construction the Harrison Monument was referenced out and removed. After the road construction was completed, I set a 1 1/4" x 30" iron bar in the Bituminus Pavement.

Witnesses to corner location:

Lawrence A. Feddersen

Gary L. Dechant



(All trees were double blazed and the distances shown are to a nail that is set in the side of the tree)

\* Crew: Bryan H. Meyer, R.L.S.  
John Kenworthy

Date: August 10th, 1989

WISCONSIN COORDINATE SYSTEM

SURVEY CONTROL ORDER

Horizontal \_\_\_\_\_  
Vertical \_\_\_\_\_

Corner	East (X)	North (Y)	Elevation (Z)	Zone
Control Sta. Name				

City, Village or Town Glendale  
County of Monroe

41501230000

I, Lawrence A. Feddersen, do hereby certify that on the 15th day of October, 1982, I found (evidence) (~~no evidence~~) of the SE corner of Section 23, T 15 N, R 1 E Fourth Principal Meridian, and I re-established said corner according to the Wisconsin Statutes as shown and described hereon.

History of corner establishment since Original Government Survey

Fred Holden was here in November of 1906.

Approved: **HARLEY A. SIME**  
**MONROE CO. SURVEYOR**

Dated this 22nd day of Nov., 1982.

Lawrence A. Feddersen

Registered Land Surveyor #1226  
Title

Description of corner evidence found:

Accepted intersection of road centerline and East-West fences as best available evidence. Fits 1/2 mile to the West well and matches Holden's 1/2 mile distance North by 1.5'±.

**See Reverse Side For Maintenance**

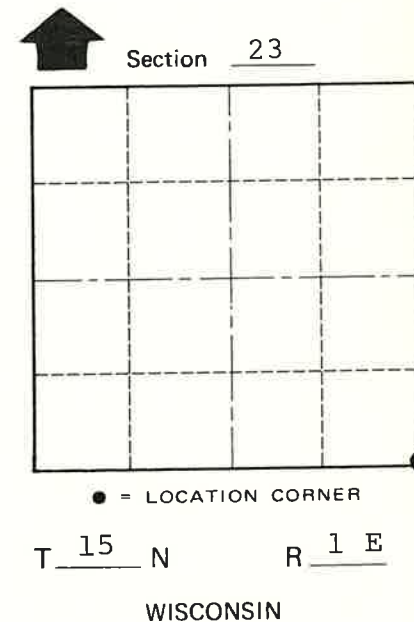
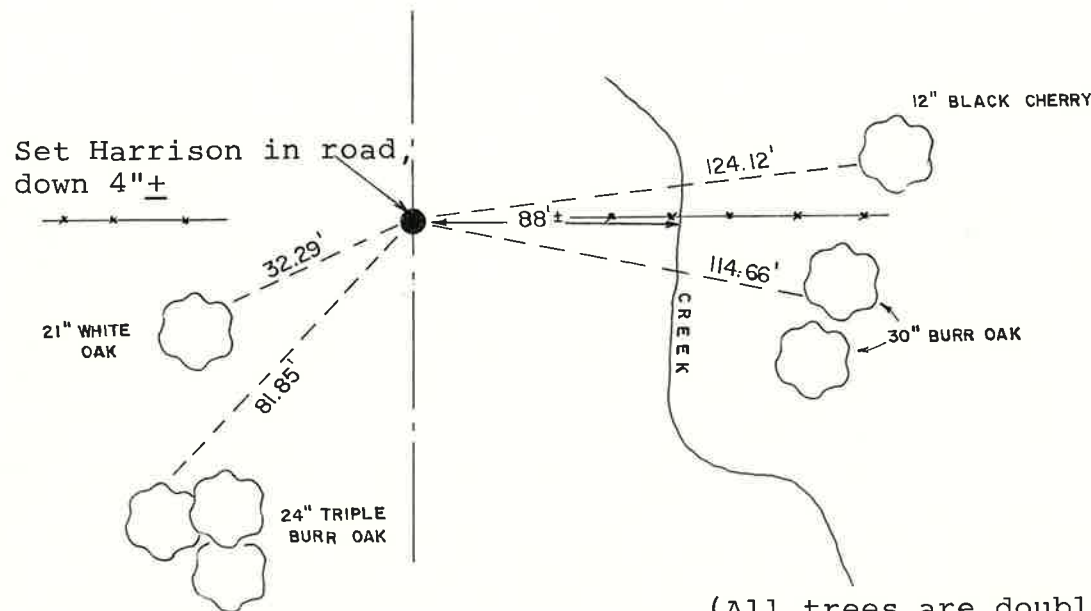
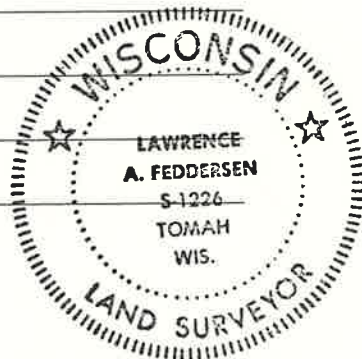
COUNTY SURVEYOR FORM NO. 1

Description of corner and witness monuments, references and accessories used to perpetuate the original or re-established location of this corner:

Witnesses to corner location:

Lawrence A. Feddersen

Gary L. Dechant



(All trees are double blazed with N&C set in side of tree, distance to N&C)

SURVEY CONTROL ORDER

Horizontal	_____
Vertical	_____

WISCONSIN COORDINATE SYSTEM

Corner	East (X)	North (Y)	Elevation (Z)	Zone
Control Sta. Name				

City, Village or Town Glendale  
County of Monroe