

U.S. PUBLIC LAND SURVEY MONUMENT RECORD

HISTORY OF CORNER ESTABLISHMENT SINCE THE ORIGINAL GOVERNMENT SURVEY
SEE PREVIOUS TIE SHEET.

DESCRIPTION OF CORNER EVIDENCE FOUND
FOUND AND ACCEPTED TCP MONUMENT.

CREW/WITNESS FOR CORNER LOCATION
-CHRISTIAN J. RUNNING
-

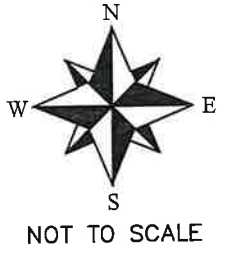
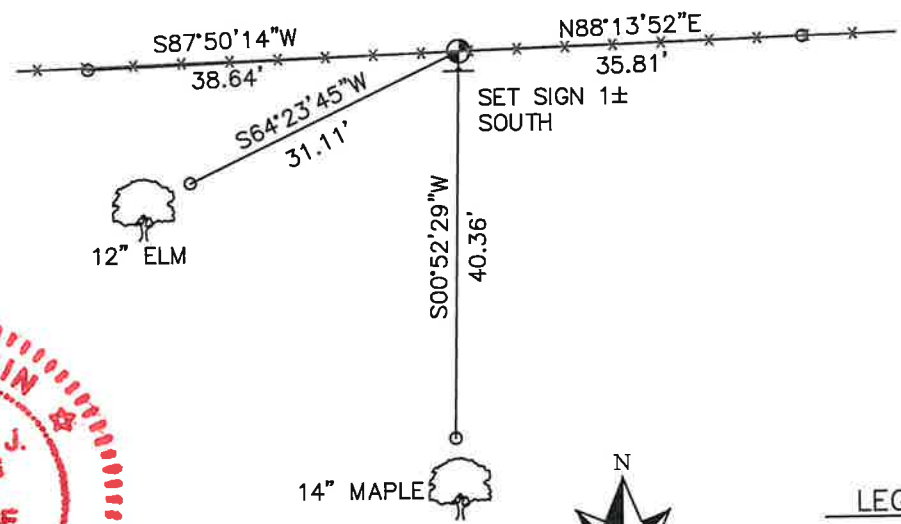
FIELD WORK COMPLETED 8/01/2023

I, CHRISTIAN J. RUNNING RLS 2558, HEREBY CERTIFY THAT THE COORDINATES PROVIDED ON THIS RECORD WERE DETERMINED BY ME OR UNDER MY DIRECT SUPERVISION AND THAT THIS FORM IS CORRECT TO THE BEST OF MY KNOWLEDGE AND BELIEF.

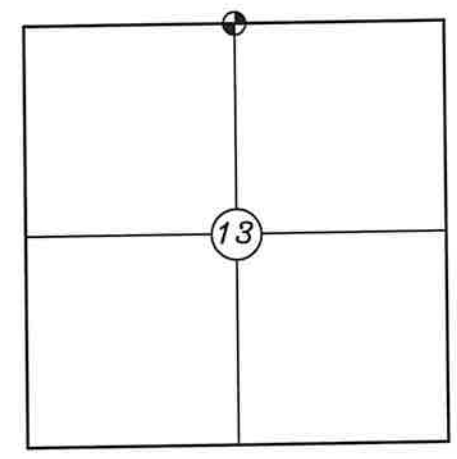
CHRISTIAN J. RUNNING
PLS 2558
RUNNING LAND SURVEYING
700 DAUPHIN ST.
LA CROSSE, WI 54603



NOTE: ALL TIES ARE SET 3'± FROM FACE OF TREES.



**SECTION 13, T15N, R1E,
TOWN OF GLENDALE
MONROE COUNTY
WISCONSIN.**



● CORNER LOCATION

LEGEND

- FOUND TCP MONUMENT
- SET 3/4" X 18" IRON BAR 1.5 LB/FT UNLESS NOTED

ALL BEARINGS ARE REFERENCED TO THE MONROE COUNTY COORDINATE SYSTEM NAD 83(2011)

MONROE COUNTY COORDINATES NAD 83(2011)
NORTHING: 323221.1140
EASTING: 755304.7674

41501120020

I, Gary L. Dechant, do hereby certify that on the 31st day of AUGUST 19 94, I found (evidence) (~~no evidence~~) of the N¹/₄ corner of Sec. 13, T15 N, R 1 E Fourth Principal Meridian, and I re-established said corner according to the Wisconsin Statutes as shown and described hereon.

Dated this 2nd day of Sept. 19 94.

Gary L. Dechant

R.L.S. 1744
Title

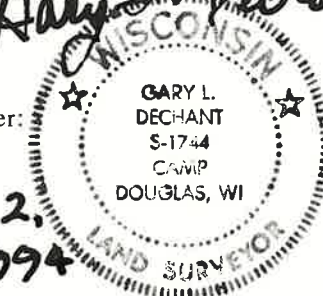
History of corner establishment since Original Government Survey

No known history since the original government survey.

Description of corner evidence found:

Set corner half way between section corners and in line with occupied east-west fence line. Fits north line of CSM doc. no. 351699 very well. The north line of this section is approx. a chain longer than original notes.

Gary L. Dechant



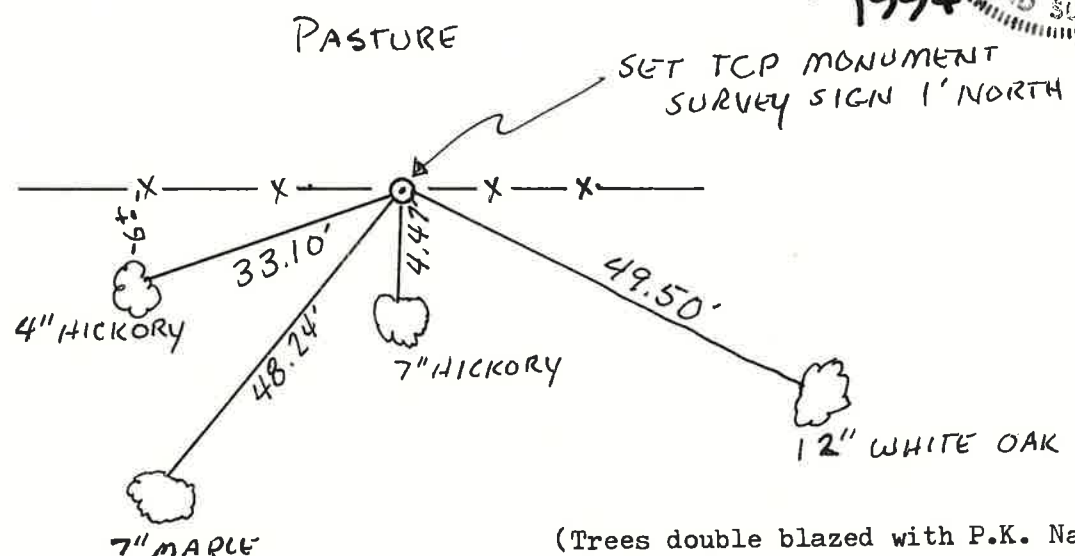
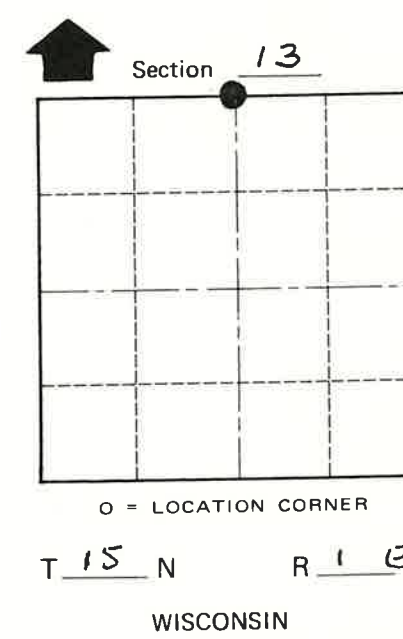
Sept 2, 1994

Description of corner and witness monuments, references and accessories used to perpetuate the original or re-established location of this corner:

Witnesses to corner location:

David E. Madison

Gary L. Dechant



(Trees double blazed with P.K. Nail set)

COUNTY SURVEYOR FORM NO. 1

SURVEY CONTROL ORDER

Horizontal	_____
Vertical	_____

WISCONSIN COORDINATE SYSTEM

Corner	East (X)	North (Y)	Elevation (Z)	Zone
Control Sta. Name				

City, Village or Town GLENDALE
County of MONROE