

# U.S. PUBLIC LAND SURVEY MONUMENT RECORD

ROMPORTL #41501100020

HISTORY OF CORNER ESTABLISHMENT SINCE THE ORIGINAL GOVERNMENT SURVEY  
SEE PREVIOUS TIE SHEET.

DESCRIPTION OF CORNER EVIDENCE FOUND  
FOUND AND ACCEPTED HARRISON MONUMENT.

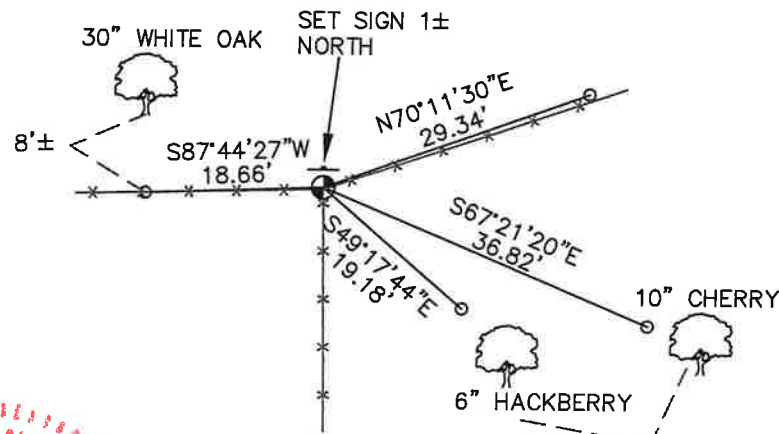
**SECTION 15, T15N, R1E,  
TOWN OF GLENDALE  
MONROE COUNTY  
WISCONSIN.**

CREW/WITNESS FOR CORNER LOCATION  
-CHRISTIAN J. RUNNING  
-

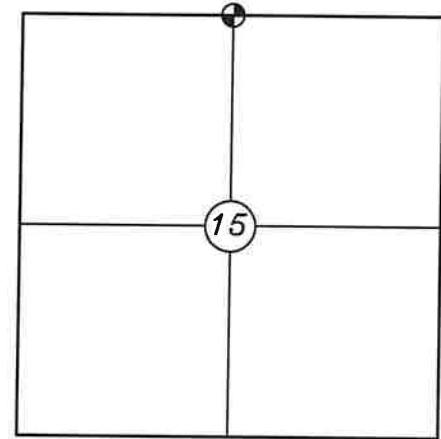
FIELD WORK COMPLETED 8/01/2023

I, CHRISTIAN J. RUNNING RLS 2558, HEREBY CERTIFY THAT THE COORDINATES PROVIDED ON THIS RECORD WERE DETERMINED BY ME OR UNDER MY DIRECT SUPERVISION AND THAT THIS FORM IS CORRECT TO THE BEST OF MY KNOWLEDGE AND BELIEF.

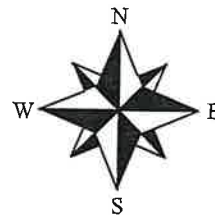
CHRISTIAN J. RUNNING  
PLS 2558  
RUNNING LAND SURVEYING  
700 DAUPHIN ST.  
LA CROSSE, WI 54603



NOTE: ALL TIES ARE SET 3'± FROM FACE OF TREES.



⊕ CORNER LOCATION



NOT TO SCALE

LEGEND

- ⊕ FOUND HARRISON MONUMENT
- SET 3/4" X 18" IRON BAR 1.5 LB/FT UNLESS NOTED

ALL BEARINGS ARE REFERENCED TO THE MONROE COUNTY COORDINATE SYSTEM NAD 83(2011)

MONROE COUNTY COORDINATES NAD 83(2011)  
NORTHING: 322630.2901  
EASTING: 744680.0933

41501100020

I, William C. Jung, do hereby certify that on the 13th day of May 1981, I found (evidence) (~~no evidence~~) of the North 1/4 corner of Section 15, T15 N, R 1 E Fourth Principal Meridian, and I re-established said corner according to the Wisconsin Statutes as shown and described hereon.

History of corner establishment since Original Government Survey

O.R.Dahl found this corner existing in July of 1868.

Description of corner evidence found:

Accepted the existing occupied fence corner as the best available evidence of the original government corner and Dahl's corner.

Dated this 25th day of Sept. 1981.

William C. Jung  
 \_\_\_\_\_  
 William C. Jung, R.L.S. 1323  
 Title

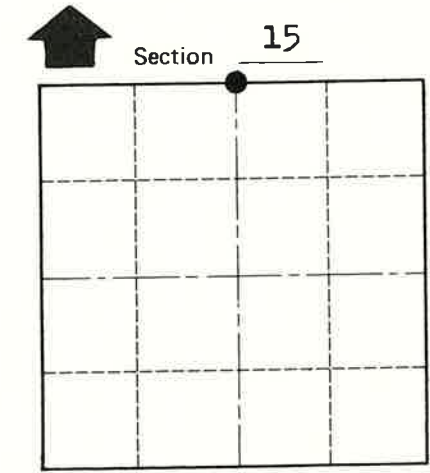
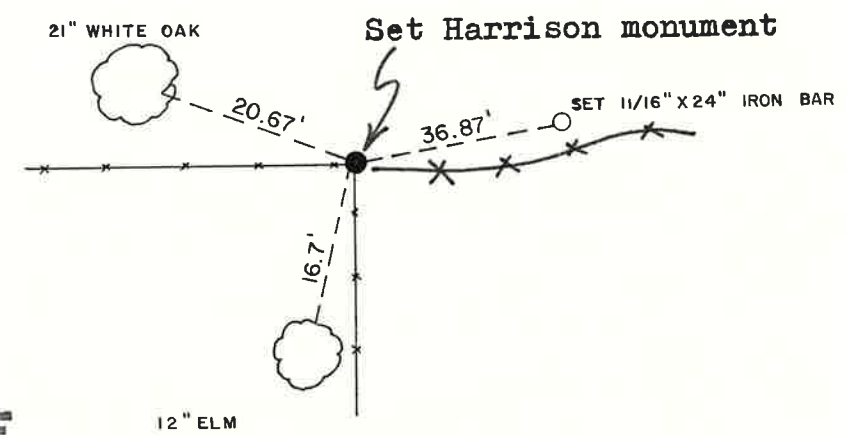
COUNTY SURVEYOR FORM NO. 1

Description of corner and witness monuments, references and accessories used to perpetuate the original or re-established location of this corner:

Witnesses to corner location:

W.C. Jung

C. Pietz



● = LOCATION CORNER  
 T 15 N R 1 E  
 WISCONSIN

Approved: **HARLEY A. SIME**  
**MONROE CO. SURVEYOR**

(All trees doubled blazed with nail set in each.)

SURVEY CONTROL ORDER

Horizontal	_____
Vertical	_____

WISCONSIN COORDINATE SYSTEM

Corner	East (X)	North (Y)	Elevation (Z)	Zone
Control Sta. Name				

City, Village or Town Glendale  
 County of Monroe  
Wisconsin