

U.S. PUBLIC LAND SURVEY MONUMENT RECORD

HISTORY OF CORNER ESTABLISHMENT SINCE THE ORIGINAL GOVERNMENT SURVEY
SEE PREVIOUS TIE SHEET.

DESCRIPTION OF CORNER EVIDENCE FOUND
FOUND AND ACCEPTED HARRISON MONUMENT, 12"± DEEP IN CRP FIELD

CREW/WITNESS FOR CORNER LOCATION
-CHRISTIAN J. RUNNING

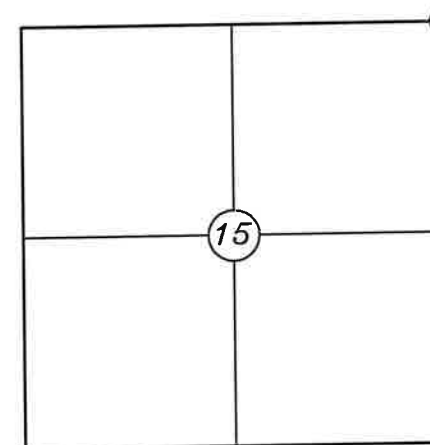
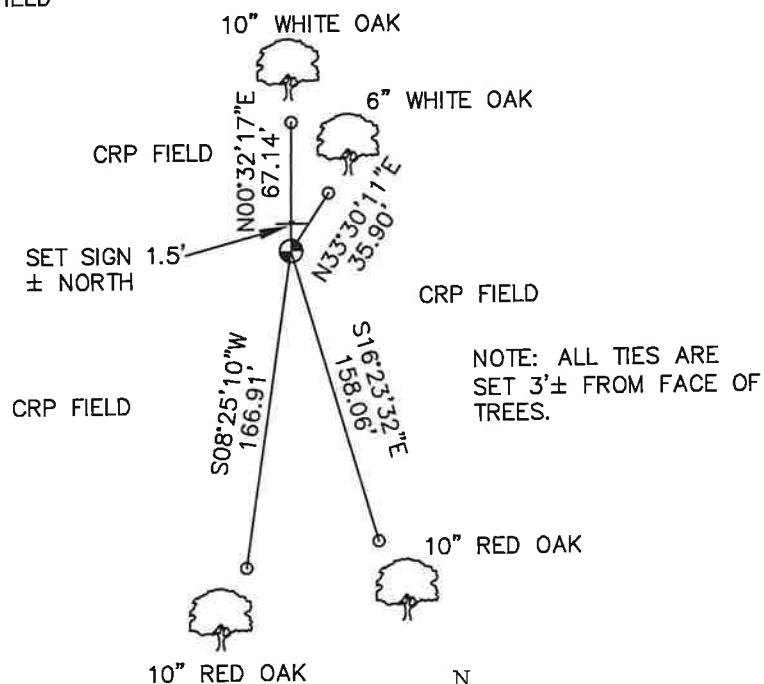
FIELD WORK COMPLETED 8/01/2023

I, CHRISTIAN J. RUNNING RLS 2558, HEREBY CERTIFY THAT THE COORDINATES PROVIDED ON THIS RECORD WERE DETERMINED BY ME OR UNDER MY DIRECT SUPERVISION AND THAT THIS FORM IS CORRECT TO THE BEST OF MY KNOWLEDGE AND BELIEF.

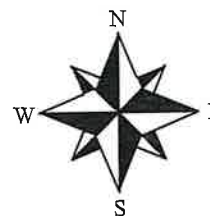
CHRISTIAN J. RUNNING
PLS 2558
RUNNING LAND SURVEYING
700 DAUPHIN ST.
LA CROSSE, WI 54603



SECTION 15, T15N, R1E,
TOWN OF GLENDALE
MONROE COUNTY
WISCONSIN.



● CORNER LOCATION



NOT TO SCALE

NOTE: ALL TIES ARE SET 3'± FROM FACE OF TREES.

LEGEND

- FOUND HARRISON MONUMENT
- SET 3/4" X 18" IRON BAR 1.5 LB/FT UNLESS NOTED

ALL BEARINGS ARE REFERENCED TO THE MONROE COUNTY COORDINATE SYSTEM NAD 83(2011)

MONROE COUNTY COORDINATES NAD 83(2011)
NORTHING: 322848.5075
EASTING: 747319.3121

41501100000

I, William C. Jung, do hereby certify that on the 5th day of May 1981, I found ~~(evidence)~~ (no evidence) of the NE corner of Section 15, T 15 N, R 1 E Fourth Principal Meridian, and I re-established said corner according to the Wisconsin Statutes as shown and described hereon.

History of corner establishment since Original Government Survey

G.W. Hart shows this section corner as being existing in his 1855 Plat of Glendale.

Description of corner evidence found:

The corner was set on line with the N1/4 and the N1/16NE and at a distance from the N1/16NE equal to the distance between the N1/4 and N1/16NE. The distances, North from this corner to the E1/4 of Sec. 10 and South to the SE of Sec. 15, fit the original government survey very well. This corner also fits for alignment the North line of the NW1/4 of Section 15.

Dated this 14th day of August 1981.

William C. Jung, R.L.S. 1323

County Surveyor's Office

Title

Description of corner and witness monuments, references and accessories used to perpetuate the original or re-established location of this corner:

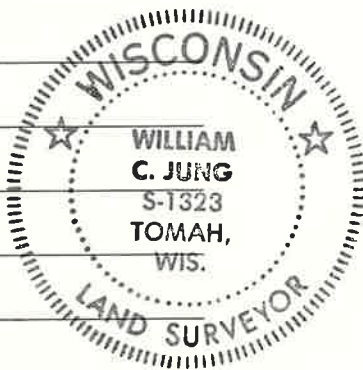
William C. Jung

Witnesses to corner location:

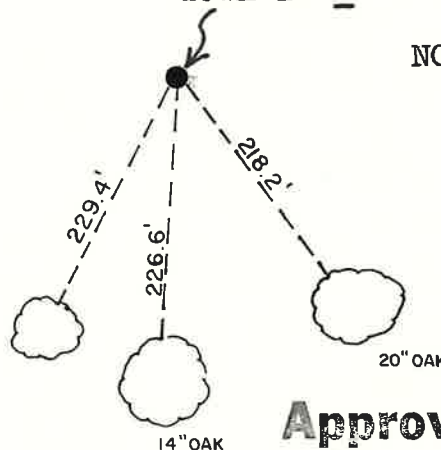
W. Jung

C. Pietz

G. Dechant

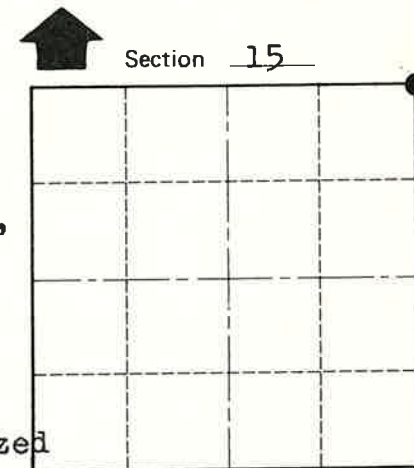


4" CHERRY



Set Harrison monument, broke off bottom 10" because of rock, buried broken pieces on south side of Harrison, down 10"±.

NOTES: Harrison set in open field. All distances are slope distances. Trees are double blazed with nails set.



• = LOCATION CORNER

T 15 N R 1 E

WISCONSIN

SURVEY CONTROL ORDER

Horizontal _____

Vertical _____

WISCONSIN COORDINATE SYSTEM

Corner	East (X)	North (Y)	Elevation (Z)	Zone
Control Sta. Name				

Approved: **HARLEY A. SIME**
MONROE CO. SURVEYOR

~~City, Village or~~ Town Glendale

County of Monroe

COUNTY SURVEYOR FORM NO. 1