

U.S. PUBLIC LAND CORNER MAINTENANCE

Corner ID : S1/4 Sec.30, T18N-R1E
41801300020

DATE	CREW	MONUMENT TYPE
October 14, 2014	Zachariah P. Dechant Gary L. Dechant	Found Harrison in tact in centerline CTH "ET".

References:

- 1) Set 3/4"x24" square iron bar down 10"
- 2) Set 3/4"x24" square iron bar, down 10"
- 3) Set 3/4"x24" square iron bar, down 10"
- 4) Set 3/4"x24" square iron bar, down 10"

Bearing	Distance
N24E	43.32'
S37E	61.68'
S24W	53.35'
N37W	58.23'

Harrison and reference markers set on straight lines.



CERTIFICATE

CERTIFIED LAND CORNER

No. 112

I, Gary L. Dechant, do hereby certify that on the 23rd day of December 1987, I found (evidence) (~~no evidence~~) of the N¹/₄ corner of 31, T 18 N, R 1 E Fourth Principal Meridian, and I re-established said corner according to the Wisconsin Statutes as shown and described hereon.

History of corner establishment since Original Government Survey

Fred Holden set a well point at this corner.

See Reverse Side For Maintenance

Description of corner evidence found:

Could not find Holden's well point, set corner on line with north-south fence and in centerline of road. Fits other corners well.

Dated this 8th day of Jan. 19 87.

Gary L. Dechant

Registered Land Surveyor, 1744
Title

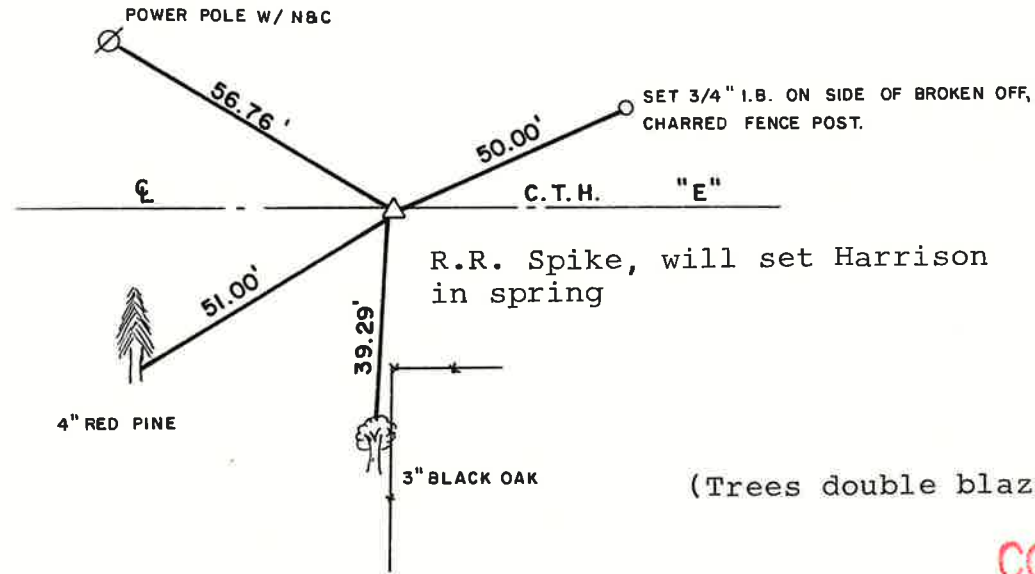
COUNTY SURVEYOR FORM NO. 1

Description of corner and witness monuments, references and accessories used to perpetuate the original or re-established location of this corner:

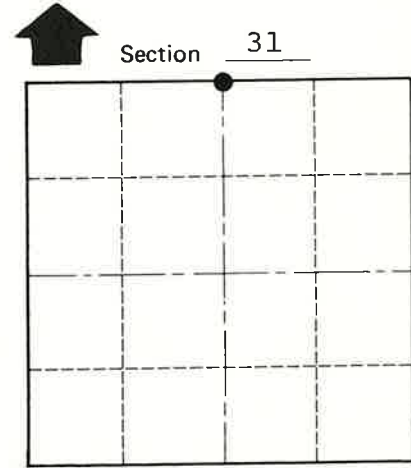
Witnesses to corner location:

David E. Madison

Gary L. Dechant



R.R. Spike, will set Harrison in spring



• = LOCATION CORNER

T 18 N R 1 E

WISCONSIN

(Trees double blazed with N&C's set)

PLACED COUNTY SURVEYOR'S SIGN 5-19-87

SURVEY CONTROL ORDER

Horizontal _____
Vertical _____

WISCONSIN COORDINATE SYSTEM

Corner	East (X)	North (Y)	Elevation (Z)	Zone
Control Sta. Name				

~~City, Village or~~ Town Byron

County of Monroe