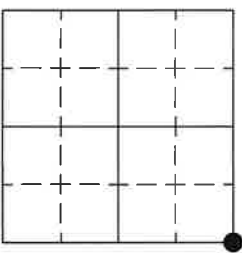


U.S PUBLIC LAND SURVEY MONUMENT RECORD

Note: This form is intended and designed to fulfill all requirements of Wisconsin Administrative Code chapter A-E 7.08, U.S. Public Land Survey Monument Record (3) (a) (b) (c) (d) (e) (f) (g) (h) (i). An additional sheet may be added if necessary to conform with said requirements.

(a) CORNER LOCATION: TOWNSHIP 18 N

RANGE 01 E



SECTION 17

TOWN/CITY/VILLAGE TOWN OF BYRON

COUNTY MONROE COUNTY

MONROE COUNTY COORDINATES N 410804.10

E 731166.77

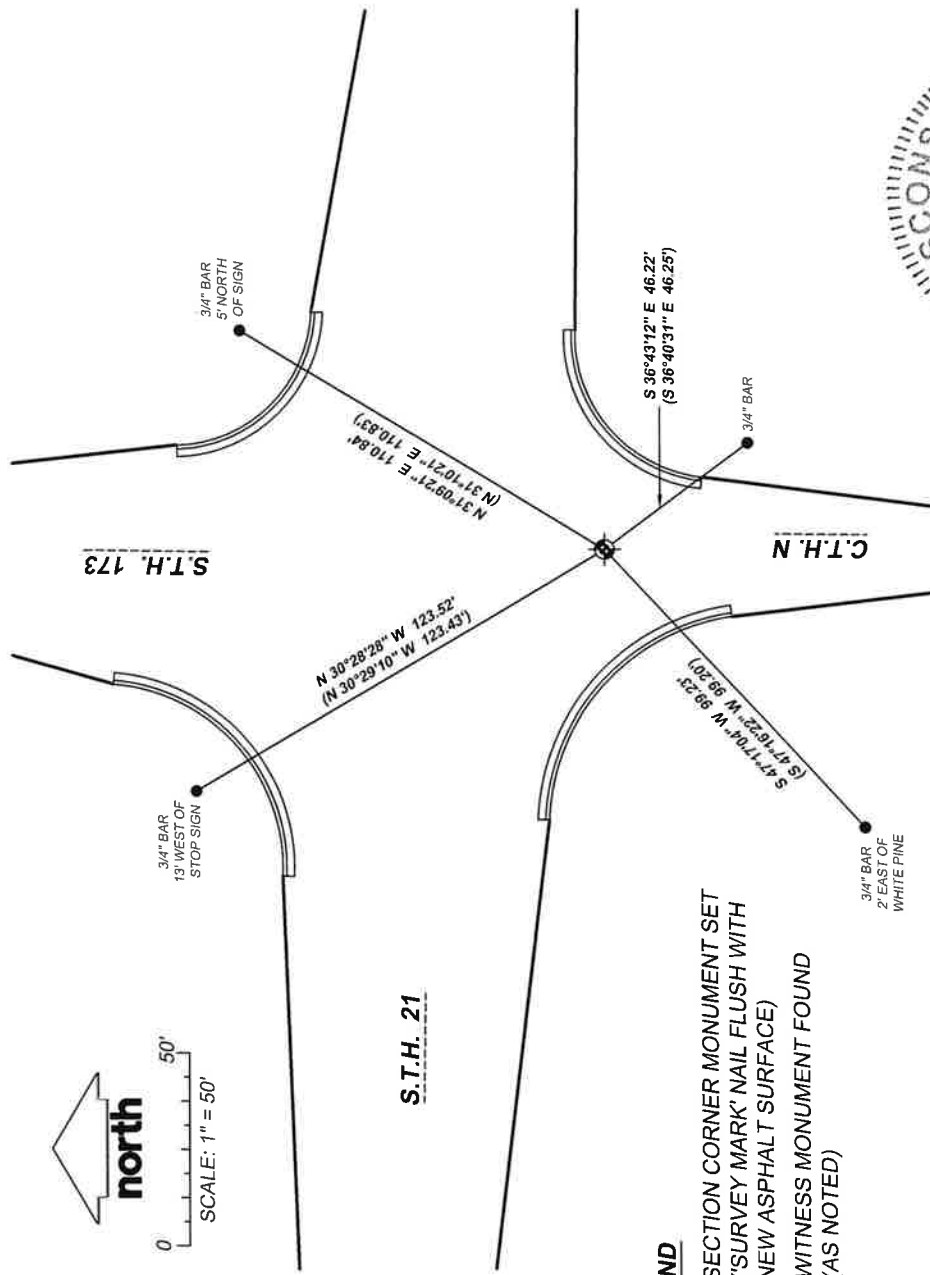
(b) (f) (g) (h) Description of monument found at this corner and if it was accepted. State all evidence (material, testimonial, occupational, plats, records, other monuments used as a basis for accepting. If not accepted or if nothing was found, state evidence used as a basis for establishing location. If reestablished through lost corner proportionate methods, indicate all monuments, distances and directions used to establish.

THIS SECTION CORNER MONUMENT WAS RECONSTRUCTED AND REQUIRED A NEW TIE SHEET PER STATE CONSTRUCTION PROJECT ID 7010-01-63. I WAS ABLE TO FIND, SURVEY AND ACCEPT THE SECTION CORNER LOCATION WITH MARK KRIZAN'S 2011 TIE SHEET. A 'SURVEY MARK' NAIL WAS SET FLUSH WITH THE NEW ASPHALT SURFACE AT THE SECTION CORNER LOCATION. EXISTING TIES WERE MEASURED AS SHOWN.

(c) (d) (e) Plan view of corner with ties to at least 4 witness monuments. If in disagreement with previously established corner, show the distances between the two corners and also indicate the ties to the disputed corner.

NOTES

1. COORDINATES ARE REFERENCED TO THE WISCONSIN COORDINATE REFERENCE SYSTEM (WISCRS), MONROE COUNTY, NAD83 (2011).



LEGEND

- SECTION CORNER MONUMENT SET ('SURVEY MARK' NAIL FLUSH WITH NEW ASPHALT SURFACE)
- WITNESS MONUMENT FOUND (AS NOTED)



(i) I, **ANDREW R. MOORE, P.L.S. S-3028**

CERTIFY THAT THE CORNER LOCATION ON THIS RECORD WAS DETERMINED BY ME OR UNDER MY DIRECTION AND CONTROL AND THAT THIS U.S. PUBLIC LAND SURVEY MONUMENT RECORD IS CORRECT AND COMPLETE TO THE BEST OF MY KNOWLEDGE AND BELIEF.

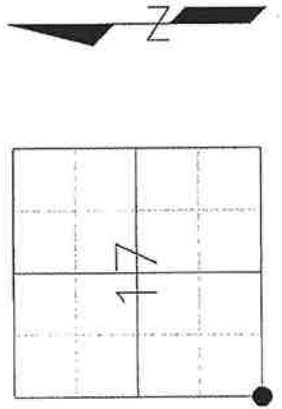
Andrew R. Moore 8/1/2023
SIGNATURE DATE

U.S. PUBLIC LAND SURVEY MONUMENT RECORD MONROE COUNTY, WISCONSIN.

IN ACCORDANCE WITH WISCONSIN ADMINISTRATIVE CODE, CHAPTER A--E 7.08 (3) (A) - (I)

LOCATION: (A) THE IDENTITY OF THE CORNER, AS REFERENCED TO THE U.S. PUBLIC LAND SURVEY SYSTEM.

SECTION 17 - TOWN 18N - RANGE 1E



TOWNSHIP OF BYRON

TYPE OF CORNER SW CORNER

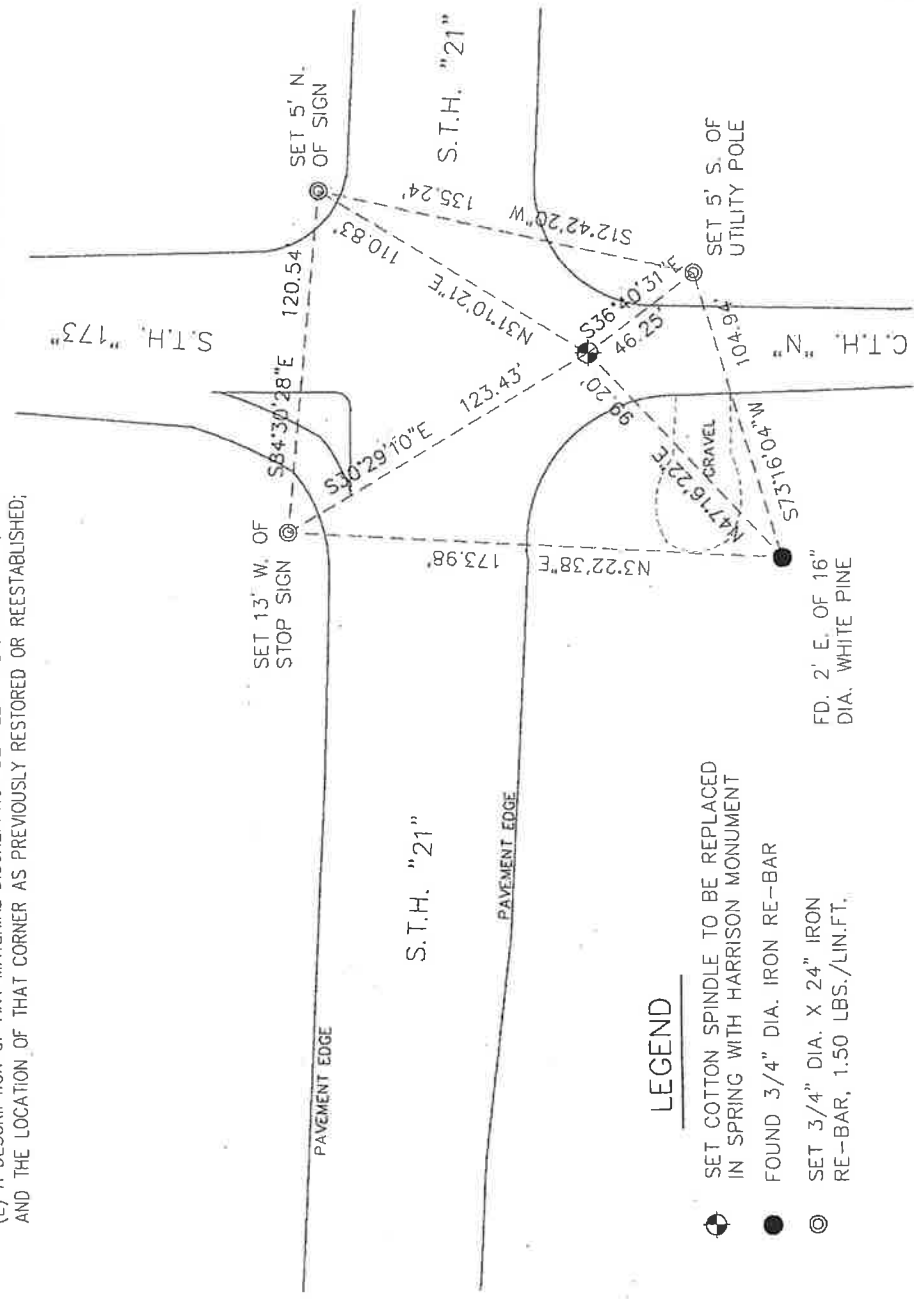
TYPE OF MONUMENT COTTON SPINDLE (TEMP.)

HORIZONTAL DATUM MONROE CO. COORDINATES

NORTHING / LATITUDE 410,804.09

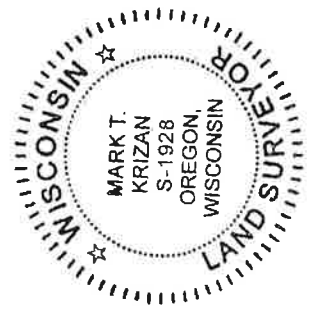
EASTING / LONGITUDE 731,166.65

PLAN VIEW: (C) REFERENCE TO AT LEAST 4 WITNESS MONUMENTS. WITNESS MONUMENTS SHALL BE CONCRETE, NATURAL STONE, IRON, BEARING TREES OR OTHER EQUALLY DURABLE MATERIAL, EXCEPT WOOD OTHER THAN BEARING TREES; (D) A PLAN VIEW DEPICTING THE RELEVANT MONUMENTS AND REFERENCE TIES WHICH ARE SUFFICIENT IN DETAIL TO ENABLE ACCURATE RELOCATION OF THE CORNER MONUMENT IF THE CORNER MONUMENT IS DISTURBED; (E) A DESCRIPTION OF ANY MATERIAL DISCREPANCY BETWEEN THE LOCATION OF THE CORNER AS RESTORED OR REESTABLISHED AND THE LOCATION OF THAT CORNER AS PREVIOUSLY RESTORED OR REESTABLISHED;



- LEGEND**
- SET COTTON SPINDLE TO BE REPLACED IN SPRING WITH HARRISON MONUMENT
 - FOUND 3/4" DIA. IRON RE-BAR
 - ◎ SET 3/4" DIA. X 24" IRON RE-BAR, 1.50 LBS./LIN.FT.

SURVEYOR'S CERTIFICATE: CHAPTER 7.08 (3) (I)



THE UNDERSIGNED HEREBY CERTIFIES THAT THE U.S. PUBLIC LAND SURVEY MONUMENT RECORD SHOWN WAS DETERMINED BY THEM OR UNDER THEIR DIRECTION AND IS CORRECT TO THE BEST OF THEIR KNOWLEDGE AND BELIEF.

Mark T. Krizan
 WISCONSIN REGISTERED LAND SURVEYOR
 DATE CERTIFIED 2-10-11
 MONROE COUNTY CORNER NUMBER: 71

* CORNER & ALL TIES FOUND GOOD July 30, 2020 *Ray L. Dechant* S-1744

U.S. PUBLIC LAND SURVEY MONUMENT RECORD MONROE COUNTY, WISCONSIN.

IN ACCORDANCE WITH WISCONSIN ADMINISTRATIVE CODE, CHAPTER A-E 7.08 (3) (A) - (I)

RECOVERY PROCEDURES:

(B) A DESCRIPTION OF ANY RECORD EVIDENCE, MONUMENT EVIDENCE, OCCUPATIONAL EVIDENCE, TESTIMONIAL EVIDENCE, TESTIMONIAL EVIDENCE OR ANY OTHER MATERIAL EVIDENCE CONSIDERED BY THE SURVEYOR, AND WHETHER THE MONUMENT WAS FOUND OR PLACED;

NO CORNER MONUMENT OR TIES WERE FOUND. UPON FINDING THE 3/4" RE-BAR (NEW SW TIE) WITH COUNTY SURVEYOR'S FLAG BY IT, I CONSULTED WITH THE COUNTY SURVEYOR. WE AGREED THAT I SHOULD SET A TEMPORARY MONUMENT AT THIS POSITION UNTIL HE COULD PLACE A HARRISON MONUMENT IN ITS PLACE AFTER THE SPRING THAW. THIS MONUMENT WAS SET USING MONROE COUNTY COORDINATES AS SHOWN ON WISDOT R/W PLAT PROJECT NUMBER 7014-08-21, SHEET 4.4, AFTER FINDING AND CHECKING INTO SECTION CORNER MONUMENTS 1/2 MILE EAST AND 1/2 WEST.

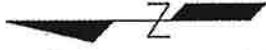
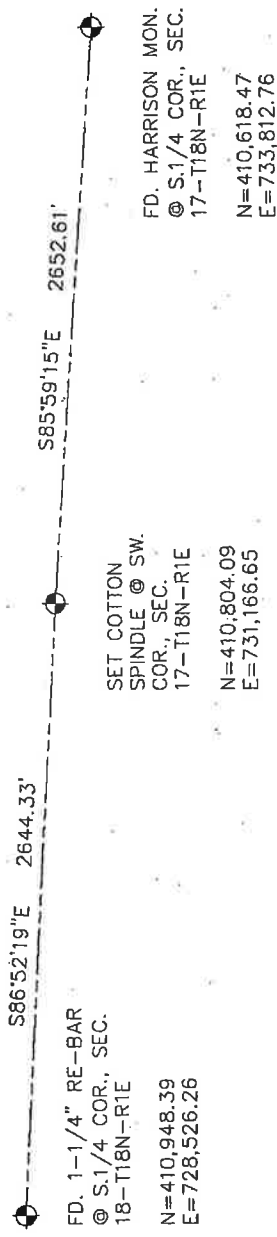
(F) WHETHER THE CORNER WAS RESTORED THROUGH ACCEPTANCE OF AN OBLITERATED EVIDENCE LOCATION OR A FOUND PERPETUATED LOCATION;

OBLITERATED EVIDENCE LOCATION

(G) WHETHER THE CORNER WAS REESTABLISHED THROUGH LOST-CORNER PROPORTIONATE METHODS;

NO

(H) THE DIRECTIONS AND DISTANCES TO OTHER PUBLIC LAND SURVEY CORNERS WHICH WERE USED AS EVIDENCE OR USED FOR PROPORTIONING IN DETERMINING THE CORNER LOCATION;



SURVEYOR'S CERTIFICATE: CHAPTER 7.08 (3) (I)



THE UNDERSIGNED HEREBY CERTIFIES THAT THE U.S. PUBLIC LAND SURVEY MONUMENT RECORD SHOWN WAS DETERMINED BY THEM OR UNDER THEIR DIRECTION AND IS CORRECT TO THE BEST OF THEIR KNOWLEDGE AND BELIEF.

Mark T. Krizan
WISCONSIN REGISTERED LAND SURVEYOR DATE CERTIFIED 2-10-11
MONROE COUNTY CORNER NUMBER: 71

I, William C. Jung, do hereby certify that on the 7th day of August 1981, I found (evidence) ~~(no evidence)~~ of the Southeast corner of Section 18, T 18 N, R 1 E, Fourth Principal Meridian, and I re-established said corner according to the Wisconsin Statutes as shown and described hereon.

Dated this 28th day of August 1981.

William C. Jung

Registered Land Surveyor

Title

William C. Jung

Description of corner and witness monuments, references and accessories used to perpetuate the original or re-established location of this corner:

Witnesses to corner location:

G. Dechant

C. Pietz



**Approved: HARLEY A. SIME
MONROE CO. SURVEYOR**

SURVEY CONTROL ORDER

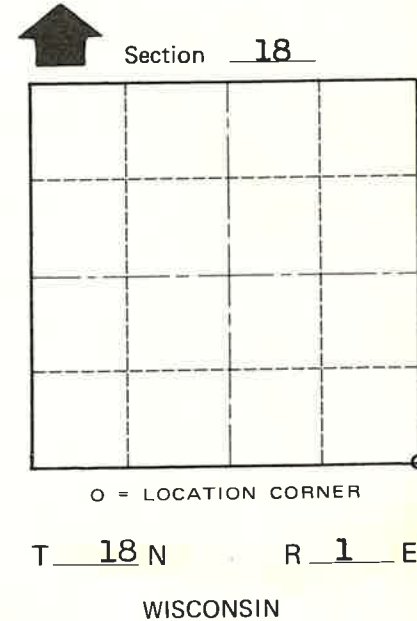
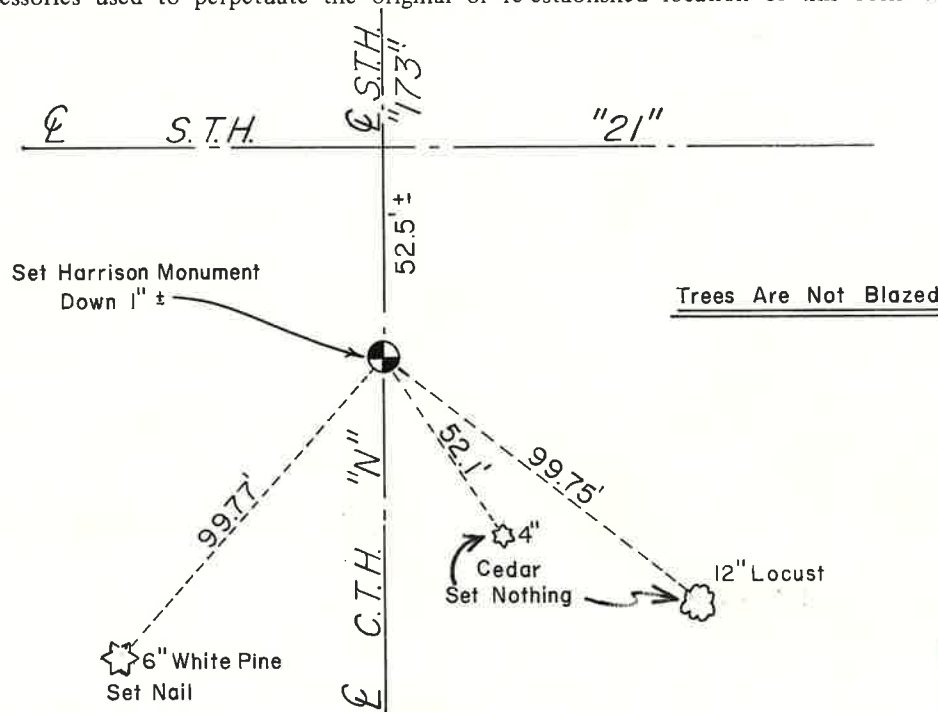
Horizontal	_____
Vertical	_____

WISCONSIN COORDINATE SYSTEM				
Corner	East (X)	North (Y)	Elevation (Z)	Zone
Control Sta. Name				

History of original corner establishment:
Fred Zietlow set an iron bar at this corner in July of 1970 and then used it again in subsequent surveys. Mark Heidecke used this iron bar in a May, 1979 survey.

Description of corner evidence found:

Found Zietlow's iron bar, removed it and set a Harrison marker.



*SIGN PLACED 12/20/86
Kenworthy*

~~City/Village of~~ Town Byron
County of Monroe
Wisconsin

COUNTY SURVEYOR FORM NO. 1