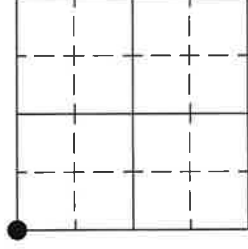


U.S PUBLIC LAND SURVEY MONUMENT RECORD

Note: This form is intended and designed to fulfill all requirements of Wisconsin Administrative Code chapter A-E 7.08, U.S. Public Land Survey Monument Record (3) (a) (b) (c) (d) (e) (f) (g) (h) (i). An additional sheet may be added if necessary to conform with said requirements.

(a) CORNER LOCATION: TOWNSHIP 18 N

RANGE 01 E



SECTION 21

TOWN/CITY/VILLAGE TOWN OF BYRON

COUNTY MONROE COUNTY

MONROE COUNTY COORDINATES N 401434.30

E 736436.85

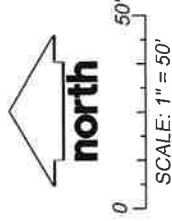
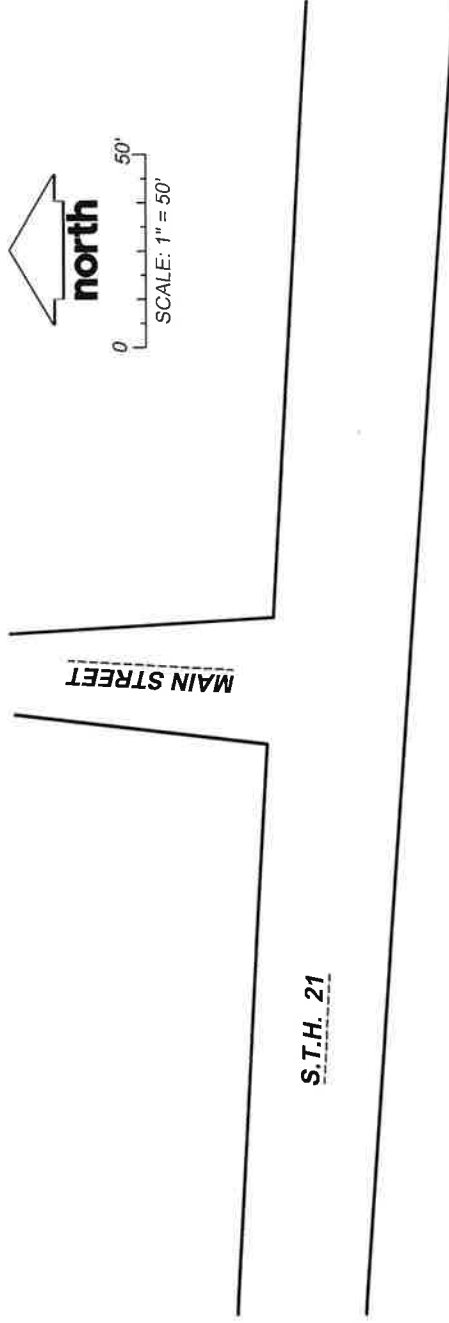
(b) (f) (g) (h) Description of monument found at this corner and if it was accepted. State all evidence (material, testimonial, occupational, plats, records, other monuments used as a basis for accepting. If not accepted or if nothing was found, state evidence used as a basis for establishing location. If reestablished through lost corner proportionate methods, indicate all monuments, distances and directions used to establish.

THIS SECTION CORNER MONUMENT REQUIRED A NEW TIE SHEET PER STATE CONSTRUCTION PROJECT ID 7010-01-63. I WAS ABLE TO FIND, SURVEY AND ACCEPT THE SECTION CORNER LOCATION WITH HARLEY SIME'S 1981 TIE SHEET. NEW TIES WERE SET AND MEASURED AS SHOWN.

(c) (d) (e) Plan view of corner with ties to at least 4 witness monuments. If in disagreement with previously established corner, show the distances between the two corners and also indicate the ties to the disputed corner.

NOTES

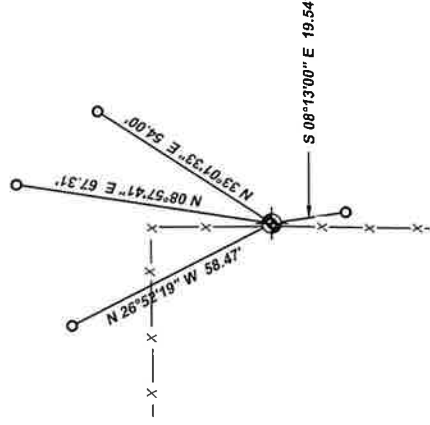
1. COORDINATES ARE REFERENCED TO THE WISCONSIN COORDINATE REFERENCE SYSTEM (WISCRS), MONROE COUNTY, NAD83 (2011).



LEGEND

● SECTION CORNER MONUMENT FOUND (1" IRON PIPE)

○ WITNESS MONUMENT SET (3/4" X 24" IRON REBAR WEIGHING 1.50 LBS/L.F.)



(i) I, **ANDREW R. MOORE, P.L.S. S-3028**

CERTIFY THAT THE CORNER LOCATION ON THIS RECORD WAS DETERMINED BY ME OR UNDER MY DIRECTION AND CONTROL AND THAT THIS U.S. PUBLIC LAND SURVEY MONUMENT RECORD IS CORRECT AND COMPLETE TO THE BEST OF MY KNOWLEDGE AND BELIEF.

Andrew R. Moore SIGNATURE
8/11/2023 DATE

U.S. PUBLIC LAND CORNER MAINTENANCE

Corner ID : SE Sec.17, T18N-R1E

41801170000

DATE	CREW	MONUMENT TYPE
September 16, 2015	Zachariah P. Dechant Gary L. Dechant	Existing 1/4" iron pipe in concrete in north-south fence. 109' south of center line STH "21" / Main Street intersection Set survey sign 1' east.

I had replaced destroyed Harrison in an earlier survey with the 1/4" pipe and concrete.

References:

- 1) Set 3/4"x24" round iron bar, down 6", 5' SW 12" Jack Pine N70E 25.98'
- 2) Set 3/4"x24" round iron bar, down 6" S39E 18.98'
- 3) Set 3/4"x24" round iron bar, down 6", 5' NE 14" White Pine S36W 30.14'
- 4) Set 3/4"x24" round iron bar, down 6", 5' north 8" Oak N64W 31.12'

Harrison Dechant



October 29, 2015

I, Harley A. Sime, do hereby certify that on the 27th day of March, 1980, I found (evidence) (~~no evidence~~) of the NW corner of Section 21, T 18 N, R 1 E Fourth Principal Meridian, and I re-established said corner according to the Wisconsin Statutes as shown and described hereon.

Dated this 20th day of Jan. 1981.

Harley A. Sime, R.L.S. 355

County Surveyor
Title

History of corner establishment since Original Government Survey

Fred Zietlow set an iron pipe here in October of 1969.

Description of corner evidence found:

Found the iron pipe and replaced it with a Harrison Monument.

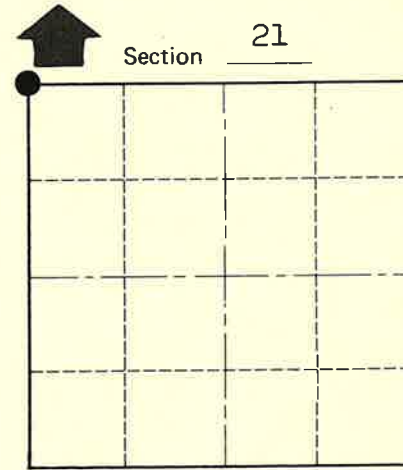
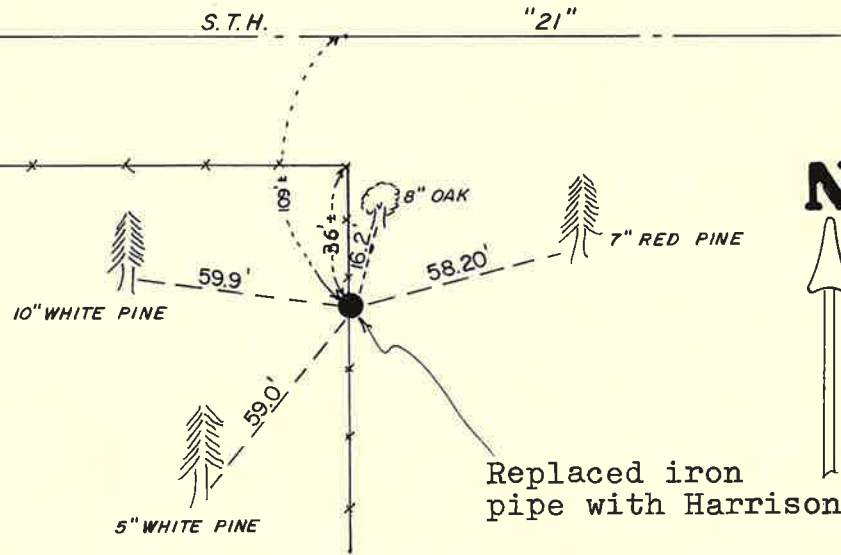
See Reverse Side For Maintenance

COUNTY SURVEYOR FORM NO. 1

Description of corner and witness monuments, references and accessories used to perpetuate the original or re-established location of this corner:

Witnesses to corner location:

M. Scott Sowers
C. Pietz
W.C. Jung *William C. Jung*



Approved: HARLEY A. SIME
MONROE CO. SURVEYOR

SURVEY CONTROL ORDER

Horizontal	_____
Vertical	_____

WISCONSIN COORDINATE SYSTEM

Corner	East (X)	North (Y)	Elevation (Z)	Zone
Control Sta. Name				

(All trees are double blazed with N&C's set)

~~City, Village~~ or Town Byron
County of Monroe

PLACED
COUNTY SURVEYOR'S
SIGN 6-12-87