

# U.S. PUBLIC LAND SURVEY MONUMENT RECORD

ROMPORTL #21604352000

HISTORY OF CORNER ESTABLISHMENT SINCE THE ORIGINAL GOVERNMENT SURVEY  
SEE PREVIOUS TIE SHEET.

### DESCRIPTION OF CORNER EVIDENCE FOUND

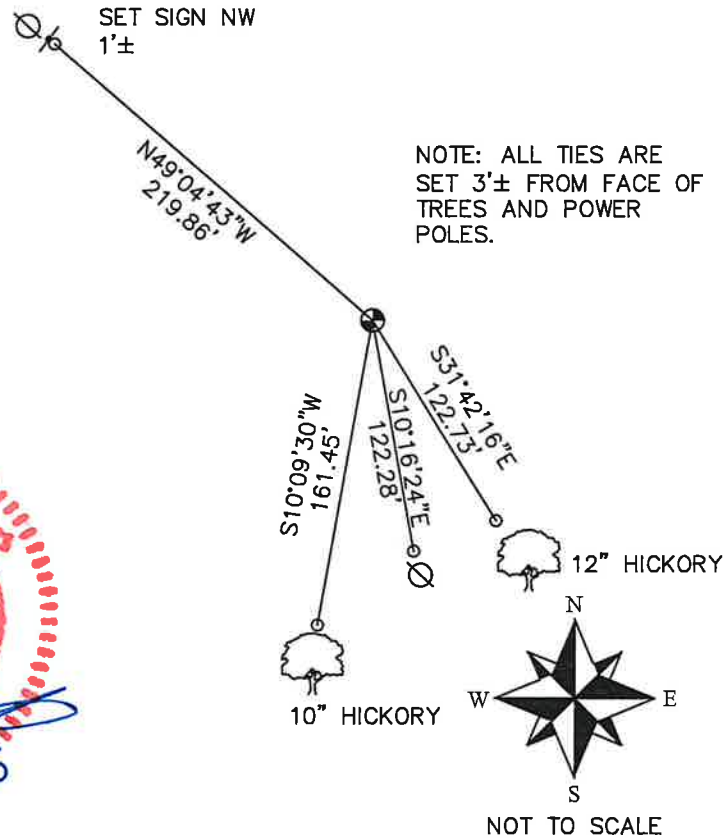
GARY DECHANT SHOWS A HARRISON AT THIS CORNER ON HIS TIE SHEET FROM 1999. HIS SURVEY (CSR 1386) SHOWS A SYMBOL FOR A HARRISON BUT THERE IS A NOTE THAT A 1.25"X6.5' IRON PIPE IS SET HERE. I FOUND DECHANT'S 1.25" IRON PIPE DOWN 26"± AND TOOK NEW TIES. ALL OF DECHANT'S TIES WERE MISSING EXCEPT THE POWER POLE TIES.

CREW/WITNESS FOR CORNER LOCATION  
-CHRISTIAN J. RUNNING  
-LEIGH A. RUNNING

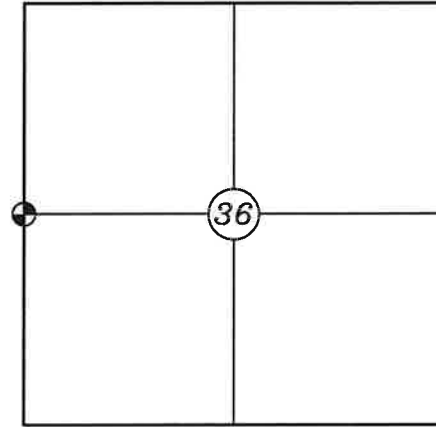
FIELD WORK COMPLETED 7/26/2023

I, CHRISTIAN J. RUNNING RLS 2558, HEREBY CERTIFY THAT THE COORDINATES PROVIDED ON THIS RECORD WERE DETERMINED BY ME OR UNDER MY DIRECT SUPERVISION AND THAT THIS FORM IS CORRECT TO THE BEST OF MY KNOWLEDGE AND BELIEF.

CHRISTIAN J. RUNNING  
PLS 2558  
RUNNING LAND SURVEYING  
700 DAUPHIN ST.  
LA CROSSE, WI 54603



SECTION 36, T16N, R4W  
TOWN OF LEON  
MONROE COUNTY  
WISCONSIN.



● CORNER LOCATION

### LEGEND

- FOUND 1.25" IRON PIPE DOWN 26"± IN A FIELD
- SET 3/4" X 18" IRON BAR 1.5 LB/FT UNLESS NOTED
- ⊗ POWER POLE

ALL BEARINGS ARE REFERENCED TO THE MONROE COUNTY COORDINATE SYSTEM NAD 83(2011)

MONROE COUNTY COORDINATES NAD 83(2011)  
NORTHING: 334506.2499  
EASTING: 626231.8449

I, Gary L. Dechant, do hereby certify that on the 12th day of April 19 99, I found ~~(evidence)~~ (no evidence) of the W/4 corner of Section 36, T 16 N, R 4 W Fourth Principal Meridian, and I re-established said corner according to the Wisconsin Statutes as shown and described hereon.

Dated this 21st day of April 19 99.

*Gary L. Dechant*

R.L.S. 1744  
Title

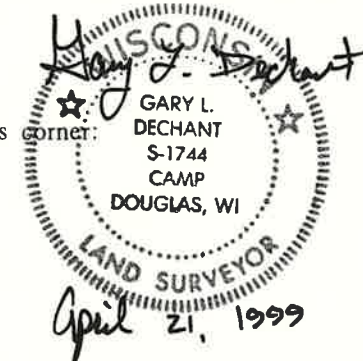
History of corner establishment since Original Government Survey

Henry Schroeder set an "iron in field" in May of 1915.

Description of corner evidence found:

Could not find Schroeder's iron monument in field. Present landowner, James Olson, stated he remembers his father hitting something with a plow when he was a young lad in the same area where we reset the corner.

Set corner by single proportionate measurement. Matches occupied east-west fence line at the NW corner of the SW/4-NW/4 within 2'±.



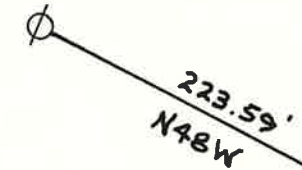
Description of corner and witness monuments, references and accessories used to perpetuate the original or re-established location of this corner:

Witnesses to corner location:

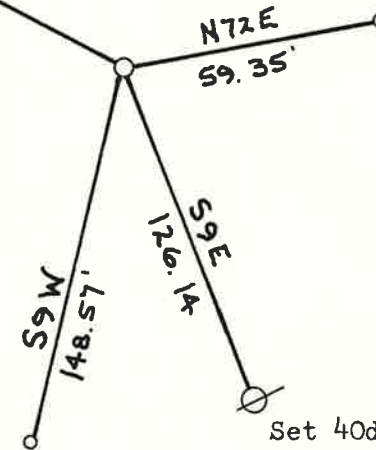
David E. Madison

Gary L. Dechant

40d nail in power pole

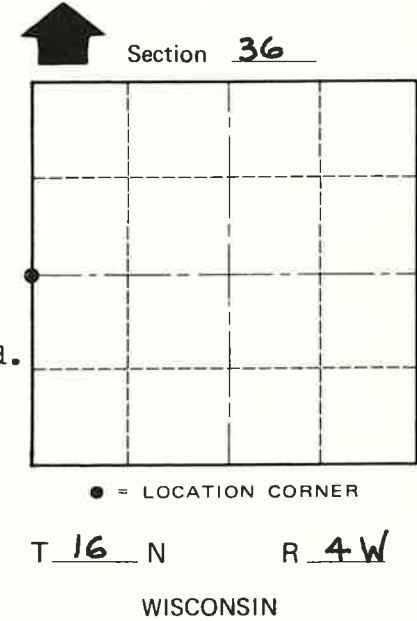


Set TCP monument, falls in field, set down 20"± below surface of ground. Set survey sign at iron pipe N72E, 59.35'.



Set 3/4"x24" iron pipe in brush along edge of field.

Set 40d nail in power pole



• = LOCATION CORNER

T 16 N R 4 W

WISCONSIN

COUNTY SURVEYOR FORM NO. 1

SURVEY CONTROL ORDER

Horizontal	_____
Vertical	_____

WISCONSIN COORDINATE SYSTEM

set 3/4"x24" iron pipe in wooded area

Corner	East (X)	North (Y)	Elevation (Z)	Zone
Control Sta. Name				

City, Village or Town LEON

County of MONROE