

U.S. PUBLIC LAND SURVEY MONUMENT RECORD

ROMPORTL #2160432000

HISTORY OF CORNER ESTABLISHMENT SINCE THE ORIGINAL GOVERNMENT SURVEY
SEE PREVIOUS TIE SHEET.

DESCRIPTION OF CORNER EVIDENCE FOUND
FOUND AND ACCEPTED HARRISON MONUMENT AS SET BY RONALD PARISH.

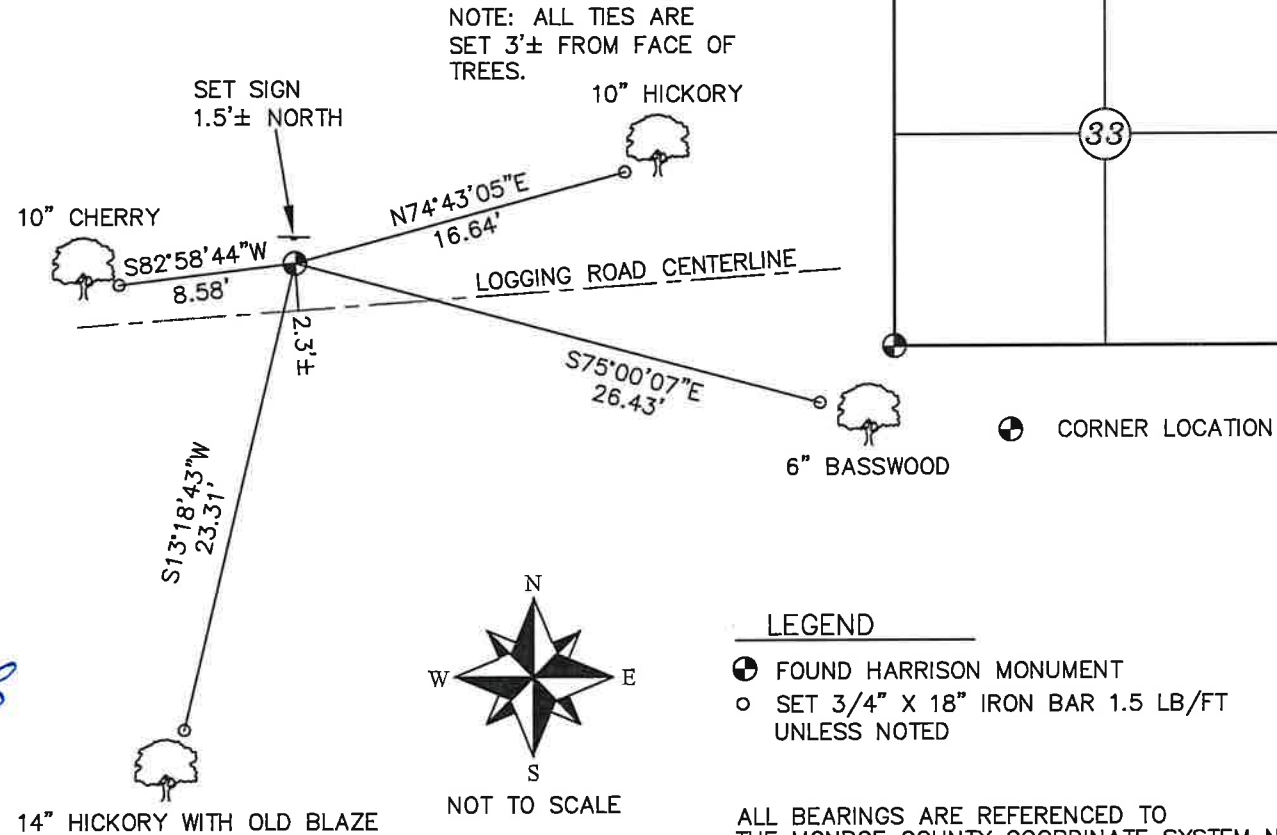
SECTION 33, T16N, R4W
TOWN OF LEON
MONROE COUNTY
WISCONSIN.

CREW/WITNESS FOR CORNER LOCATION
-CHRISTIAN J. RUNNING
-LEIGH A. RUNNING

FIELD WORK COMPLETED 7/25/2023

I, CHRISTIAN J. RUNNING RLS 2558, HEREBY CERTIFY THAT THE COORDINATES PROVIDED ON THIS RECORD WERE DETERMINED BY ME OR UNDER MY DIRECT SUPERVISION AND THAT THIS FORM IS CORRECT TO THE BEST OF MY KNOWLEDGE AND BELIEF.

CHRISTIAN J. RUNNING
PLS 2558
RUNNING LAND SURVEYING
700 DAUPHIN ST.
LA CROSSE, WI 54603



MONROE COUNTY COORDINATES NAD 83(2011)
NORTHING: 331789.3459
EASTING: 610504.4212



I, Ronald D. Parish, do hereby certify that on the 1st day of August 1984, I found (evidence) (no evidence) of the SW corner of Section 33, T 16 N, R 4 W Fourth Principal Meridian, and I re-established said corner according to the Wisconsin Statutes as shown and described hereon.

Dated this 15th day of Aug. 1984.

Ronald D. Parish

Registered Land surveyor
Title

History of corner establishment since Original Government Survey

No known recorded history since the original survey.

Description of corner evidence found:

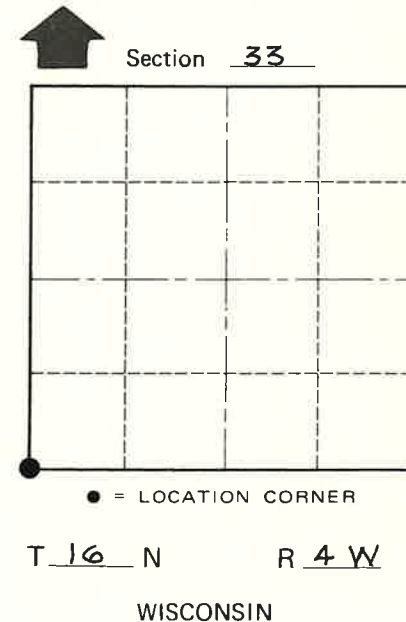
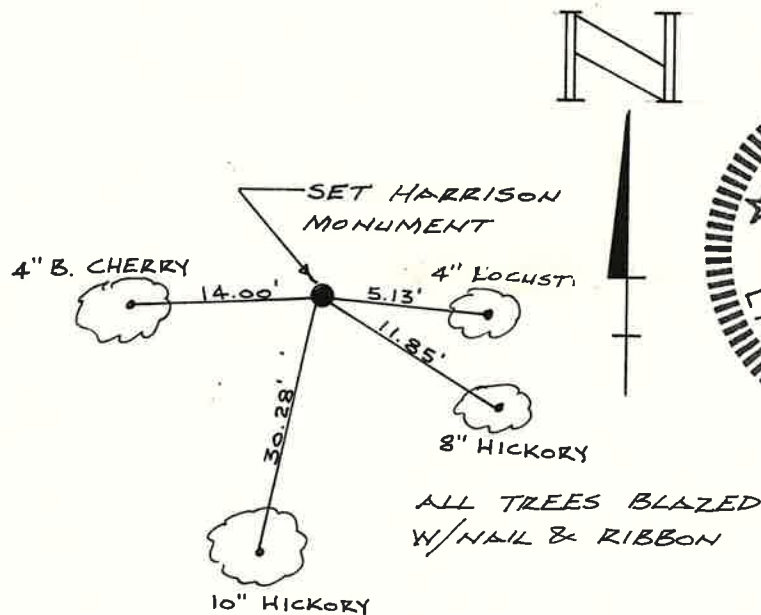
This corner falls within the boundaries of a game farm with all fences removed for a period of time. Brush and foliage is so dense I could not determine anything by occupation. Set the corner extending the line from the NW corner thru the W $\frac{1}{4}$ corner and intersecting this with the traces of old fence line I found to the east.

Description of corner and witness monuments, references and accessories used to perpetuate the original or re-established location of this corner:

Witnesses to corner location:

Ronald D. Parish

Charles Dade



COUNTY SURVEYOR FORM NO. 1

SURVEY CONTROL ORDER

Horizontal	_____
Vertical	_____

WISCONSIN COORDINATE SYSTEM

Corner	East (X)	North (Y)	Elevation (Z)	Zone
Control Sta. Name				

City, Village or Town LEON

County of MONROE