

# U.S. PUBLIC LAND SURVEY MONUMENT RECORD

ROMPORTL #21604302000

HISTORY OF CORNER ESTABLISHMENT SINCE THE ORIGINAL GOVERNMENT SURVEY  
SEE PREVIOUS TIE SHEET

**SECTION 29, T16N, R4W**  
**TOWN OF LEON**  
**MONROE COUNTY**  
**WISCONSIN.**

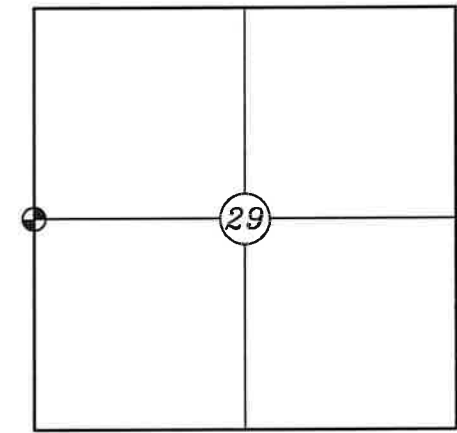
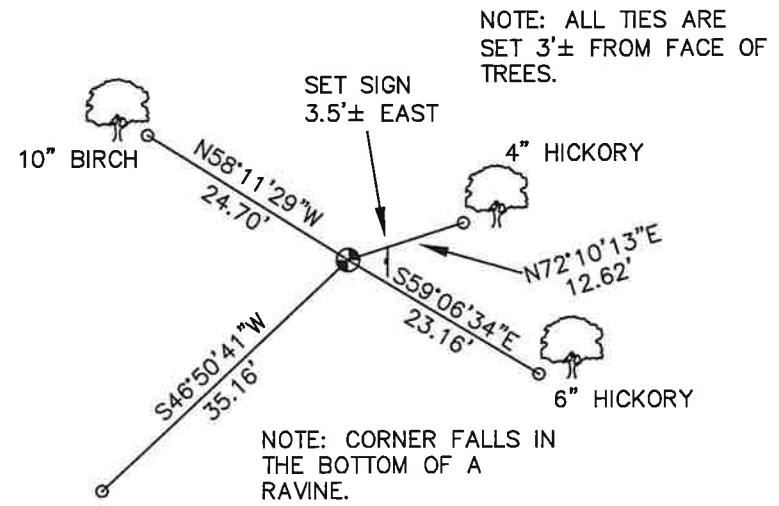
DESCRIPTION OF CORNER EVIDENCE FOUND  
FOUND AND ACCEPTED 2" O.D. IRON PIPE AS SET BY GARY DECHANT.

CREW/WITNESS FOR CORNER LOCATION  
-CHRISTIAN J. RUNNING  
-LEIGH A. RUNNING

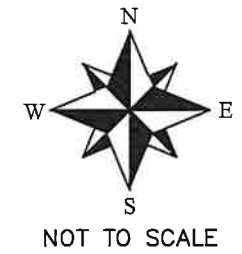
FIELD WORK COMPLETED 7/25/2023

I, CHRISTIAN J. RUNNING RLS 2558, HEREBY CERTIFY THAT THE COORDINATES PROVIDED ON THIS RECORD WERE DETERMINED BY ME OR UNDER MY DIRECT SUPERVISION AND THAT THIS FORM IS CORRECT TO THE BEST OF MY KNOWLEDGE AND BELIEF.

CHRISTIAN J. RUNNING  
PLS 2558  
RUNNING LAND SURVEYING  
700 DAUPHIN ST.  
LA CROSSE, WI 54603



● CORNER LOCATION



LEGEND

- FOUND 2" O.D. IRON PIPE
- SET 3/4" X 18" IRON BAR 1.5 LB/FT UNLESS NOTED

ALL BEARINGS ARE REFERENCED TO THE MONROE COUNTY COORDINATE SYSTEM NAD 83(2011)

MONROE COUNTY COORDINATES NAD 83(2011)  
NORTHING: 339601.9534  
EASTING: 605357.7851

I, Gary L. Dechant, do hereby certify that on the 13th day of December 1996, I found ~~(evidence)~~ (no evidence) of the W<sup>1</sup>/<sub>4</sub> corner of Sec. 29, T 16 N, R 4 W Fourth Principal Meridian, and I re-established said corner according to the Wisconsin Statutes as shown and described hereon.

Dated this 31st day of Dec. 1996.

Gary L. Dechant

R.L.S. 1744  
Title

History of corner establishment since Original Government Survey

O. R. Dahl was here in 1868. His notes are very hard to read.

Description of corner evidence found:

This corner falls in a rocky gulley, all signs of any corner are gone. Re-established this corner on line with the existing north-south fence along the west line of the section at a doubled distance between the NW corner of Section 29 and the occupied NW corner of the SW<sup>1</sup>/<sub>4</sub>-NW<sup>1</sup>/<sub>4</sub>. This location, also, fits occupied corners along the E-W <sup>1</sup>/<sub>4</sub> line extremely well.

COUNTY SURVEYOR FORM NO. 1

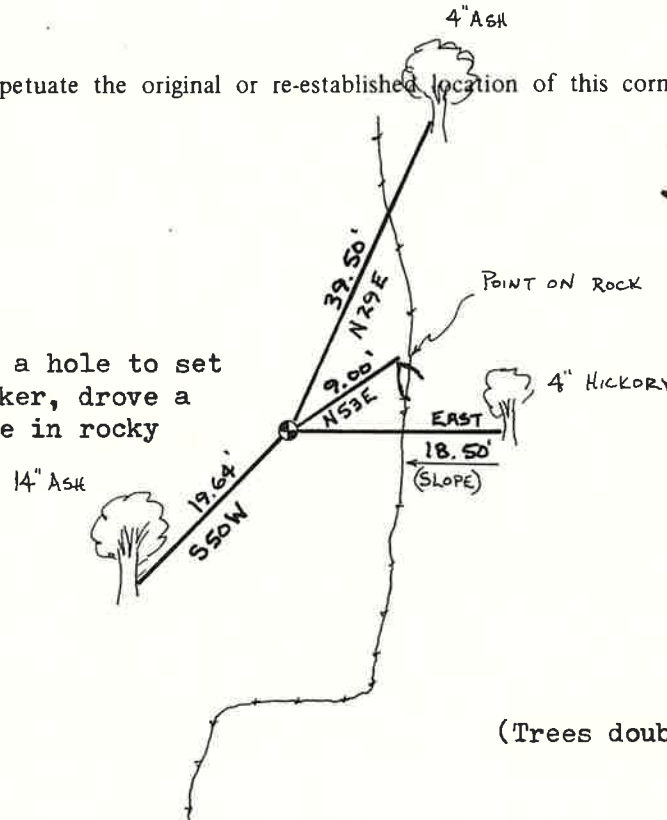
Description of corner and witness monuments, references and accessories used to perpetuate the original or re-established location of this corner:

Witnesses to corner location:

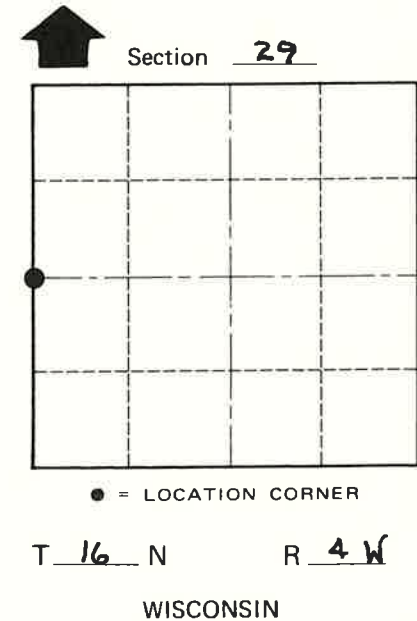
David E. Madison

Gary L. Dechant

Could not dig a hole to set cast iron county marker, drove a 2" O.D. x4' iron pipe in rocky gulley. Set survey sign 1' north.



Gary L. Dechant  
GARY L. DECHANT  
S-1744  
CAMP DOUGLAS, WI  
LAND SURVEYOR  
December 31, 1996



(Trees double blazed with 40d nail set)

SURVEY CONTROL ORDER

Horizontal	_____
Vertical	_____

WISCONSIN COORDINATE SYSTEM

Corner	East (X)	North (Y)	Elevation (Z)	Zone
Control Sta. Name				

City, Village or Town LEON  
County of MONROE