

# U.S. PUBLIC LAND SURVEY MONUMENT RECORD

ROMPORTL #21604260000

HISTORY OF CORNER ESTABLISHMENT SINCE THE ORIGINAL GOVERNMENT SURVEY  
SEE PREVIOUS TIE SHEET.

**SECTION 25, T16N, R4W  
TOWN OF LEON  
MONROE COUNTY  
WISCONSIN.**

DESCRIPTION OF CORNER EVIDENCE FOUND

I FOUND DECHANT'S 2" IRON PIPE LYING FLAT ON THE GROUND. THE TIES WERE UNRECOVERABLE EXCEPT THE RAILROAD BOLT IN THE CENTERLINE OF CTH X. I RESET THE 2"x40"± IRON PIPE USING THE RAILROAD BOLT AND THE THE RECORDED DISTANCE FROM THE W 1/4 OF SECTION 25. THIS CORNER IS NOT EASILY ACCESSIBLE DUE TO IT FALLING IN A SWAMP. THERE ARE NO SOLID PLACES TO PLACE TIES SO THEY WERE SET OUT OF THE SWAMP.

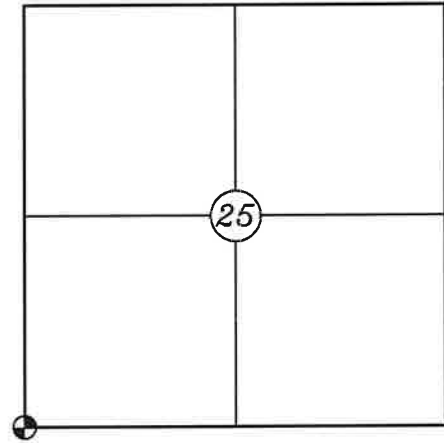
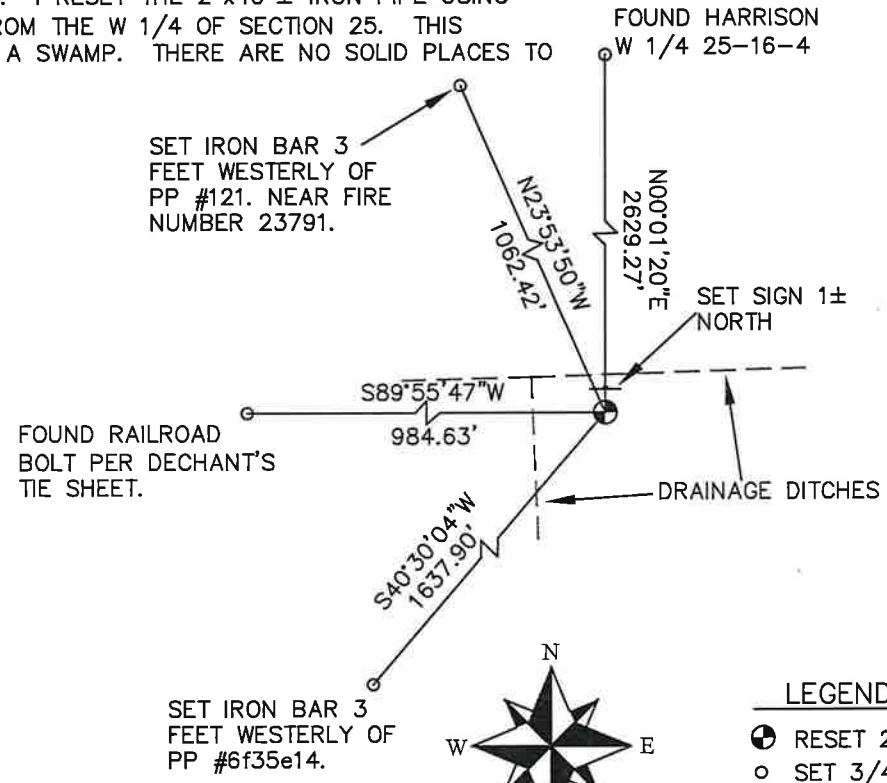
CREW/WITNESS FOR CORNER LOCATION

- CHRISTIAN J. RUNNING
- LEIGH A. RUNNING

FIELD WORK COMPLETED 7/26/2023

I, CHRISTIAN J. RUNNING RLS 2558, HEREBY CERTIFY THAT THE COORDINATES PROVIDED ON THIS RECORD WERE DETERMINED BY ME OR UNDER MY DIRECT SUPERVISION AND THAT THIS FORM IS CORRECT TO THE BEST OF MY KNOWLEDGE AND BELIEF.

CHRISTIAN J. RUNNING  
PLS 2558  
RUNNING LAND SURVEYING  
700 DAUPHIN ST.  
LA CROSSE, WI 54603



● CORNER LOCATION

LEGEND

- RESET 2"x40"± IRON PIPE
- SET 3/4" X 18" IRON BAR 1.5 LB/FT UNLESS NOTED

ALL BEARINGS ARE REFERENCED TO THE MONROE COUNTY COORDINATE SYSTEM NAD 83(2011)

MONROE COUNTY COORDINATES NAD 83(2011)  
NORTHING: 337135.7152  
EASTING: 626250.1269

I, Gary L. Dechant, do hereby certify that on the 30th day of July 19 91, I found (evidence) (~~the evidence~~) of the SW corner of Section 25, T. 16 N, R. 4 W Fourth Principal Meridian, and I re-established said corner according to the Wisconsin Statutes as shown and described hereon.

Dated this 30 day of July 19 91.

Gary L. Dechant

Reg. Land Surveyor, S-1744  
Title

History of corner establishment since Original Government Survey

Henry Schroeder set an iron pipe here in 1915.

Description of corner evidence found:

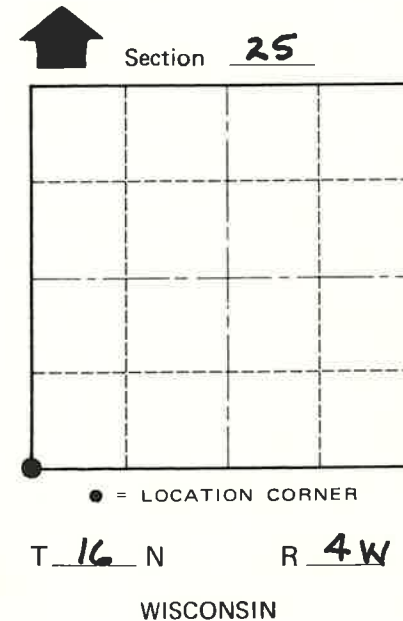
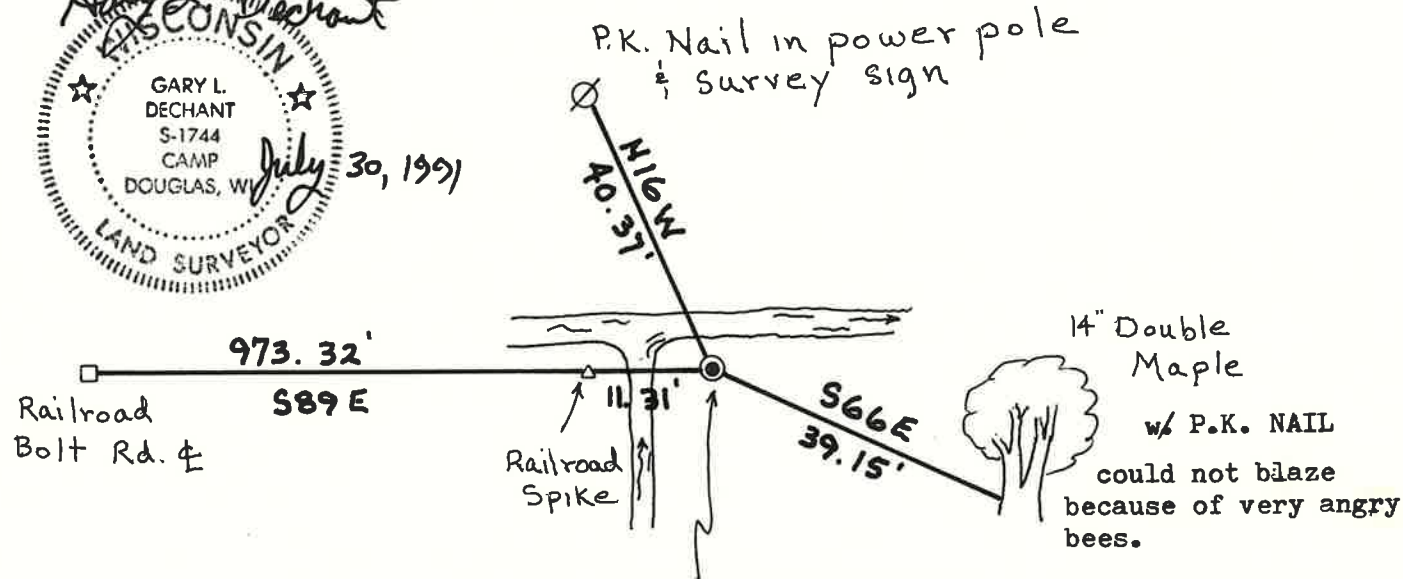
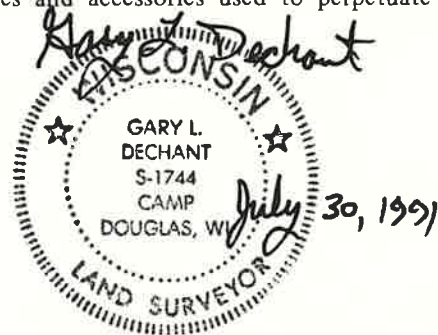
I could not find Schroeder's iron pipe, it may have been destroyed when the power line came through or when the ditch was dug. Reestablished this corner on line and at a doubled distance between the NW and W<sup>1/4</sup> corners of Section 25. This location fits the remains of an east-west fence line extremely well.

COUNTY SURVEYOR FORM NO. 1

Description of corner and witness monuments, references and accessories used to perpetuate the original or re-established location of this corner:

Witnesses to corner location:

Gary L. Dechant



SURVEY CONTROL ORDER

Horizontal	_____
Vertical	_____

WISCONSIN COORDINATE SYSTEM

Corner	East (X)	North (Y)	Elevation (Z)	Zone
Control Sta. Name				

Set 2"x5' iron pipe in wet marsh. Set Stones obtained from creek bottom around the iron pipe. Corner falls 3' South and 6' East of creek intersection. Set survey sign at power pole shown as tie. Railroad spike 11.31 feet to west is on dry, higher ground.

City, Village or Town LEON  
County of MONROE