

U.S. PUBLIC LAND SURVEY MONUMENT RECORD

ROMPORTL #21604180000

HISTORY OF CORNER ESTABLISHMENT SINCE THE ORIGINAL GOVERNMENT SURVEY
SEE PREVIOUS TIE SHEET BY GAROLD SIME.

SECTION 20, T16N, R4W
TOWN OF LEON
MONROE COUNTY
WISCONSIN.

DESCRIPTION OF CORNER EVIDENCE FOUND

FOUND AND ACCEPTED THE HARRISON AS SHOWN ON THE PREVIOUS TIE SHEET BY GAROLD SIME.
TOOK NEW TIES AS SHOWN BELOW.

CREW/WITNESS FOR CORNER LOCATION
-CHRISTIAN J. RUNNING
-LEIGH A. RUNNING

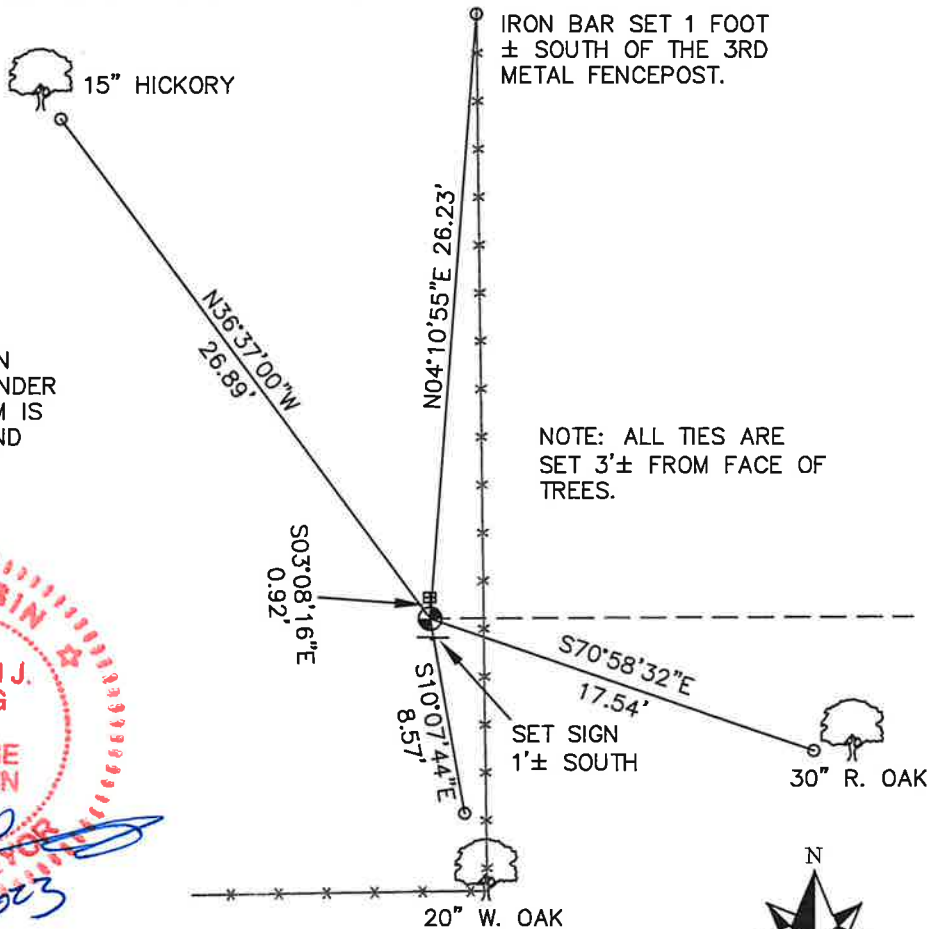
FIELD WORK COMPLETED 7/24/2023

I, CHRISTIAN J. RUNNING RLS 2558, HEREBY CERTIFY THAT THE COORDINATES PROVIDED ON THIS RECORD WERE DETERMINED BY ME OR UNDER MY DIRECT SUPERVISION AND THAT THIS FORM IS CORRECT TO THE BEST OF MY KNOWLEDGE AND BELIEF.

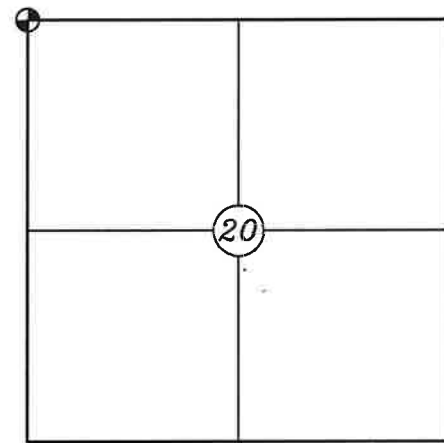
CHRISTIAN J. RUNNING
PLS 2558
RUNNING LAND SURVEYING
700 DAUPHIN ST.
LA CROSSE, WI 54603



MONROE COUNTY COORDINATES NAD 83(2011)
NORTHING: 347466.1565
EASTING: 605392.6547



NOTE: ALL TIES ARE SET 3'± FROM FACE OF TREES.

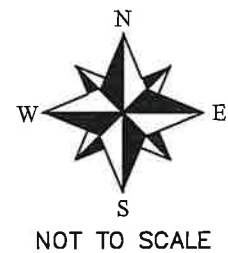


● CORNER LOCATION

LEGEND

- FOUND HARRISON
- SET 3/4" X 18" IRON BAR 1.5 LB/FT UNLESS NOTED
- FOUND STONE AS RESET BY SIME

ALL BEARINGS ARE REFERENCED TO THE MONROE COUNTY COORDINATE SYSTEM NAD 83(2011)



I, Garold A. Sime, do hereby certify that on the 9th day of November 1984, I found (evidence) ~~(no evidence)~~ of the NW corner of ~~XXXXXXX~~ Section 20, T 16 N, R 4 W Fourth Principal Meridian, and I re-established said corner according to the Wisconsin Statutes as shown and described hereon.

Dated this 15th day of Nov. 1984.

Garold A. Sime

Garold A. Sime, R.L.S. 1261
Title

History of corner establishment since Original Government Survey

Fred Holden set a stone at this corner in Dec. of 1909

Description of corner evidence found:

Found stone and accepted same as corner. Replaced stone with Harrison Monument.

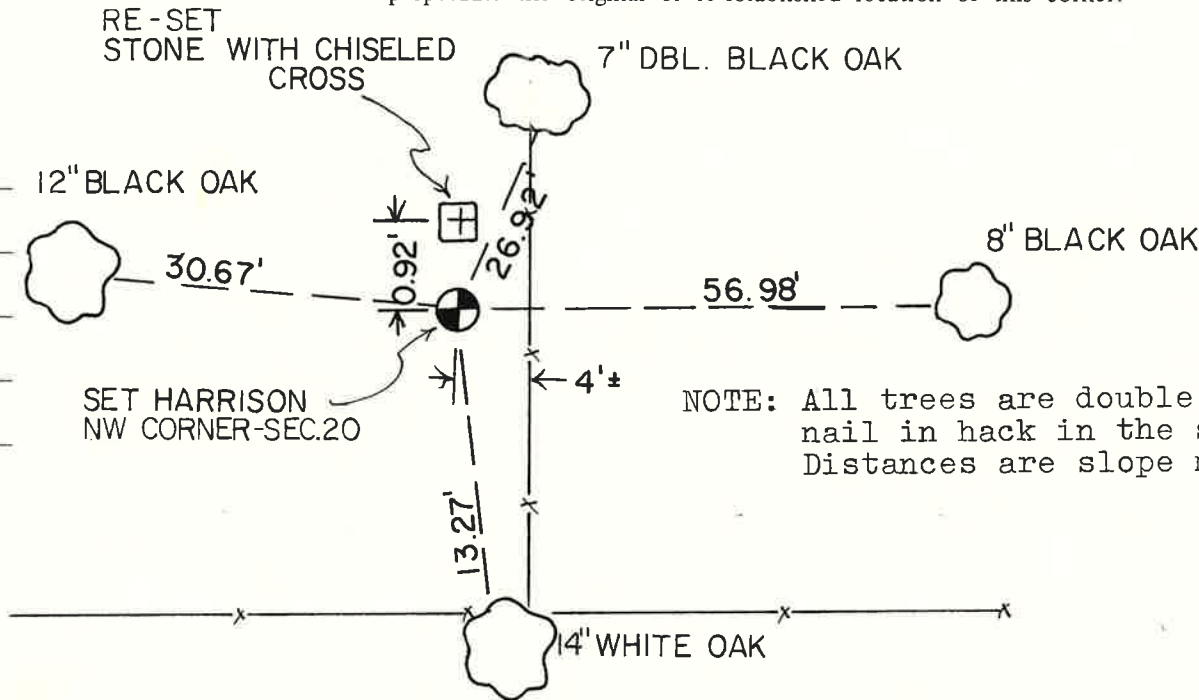
COUNTY SURVEYOR FORM NO. 1

Description of corner and witness monuments, references and accessories used to perpetuate the original or re-established location of this corner:
Harrison Monument at corner.

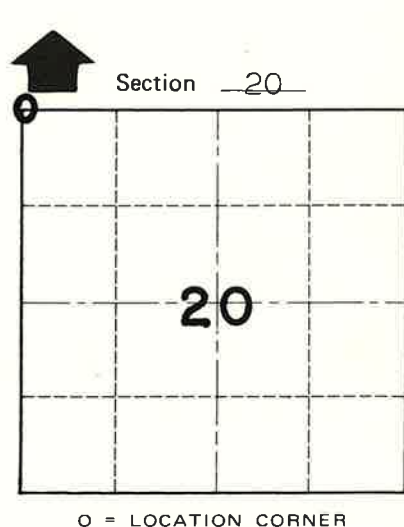
Witnesses to corner location:

G.A. Sime

Jim Lund



NOTE: All trees are double blazed with nail in hack in the side of tree. Distances are slope measured.



T 16 N R 4 W
WISCONSIN

SURVEY CONTROL ORDER

Horizontal	_____
Vertical	_____

WISCONSIN COORDINATE SYSTEM

Corner	East (X)	North (Y)	Elevation (Z)	Zone
Control Sta. Name				

City, Village or Town Leon

County of Monroe