

# U.S. PUBLIC LAND SURVEY MONUMENT RECORD

ROMPORTL #21604170020

HISTORY OF CORNER ESTABLISHMENT SINCE THE ORIGINAL GOVERNMENT SURVEY  
FRED HOLDEN SET A STONE HERE IN 1909.

SECTION 17, T16N, R4W  
TOWN OF LEON  
MONROE COUNTY  
WISCONSIN.

DESCRIPTION OF CORNER EVIDENCE FOUND

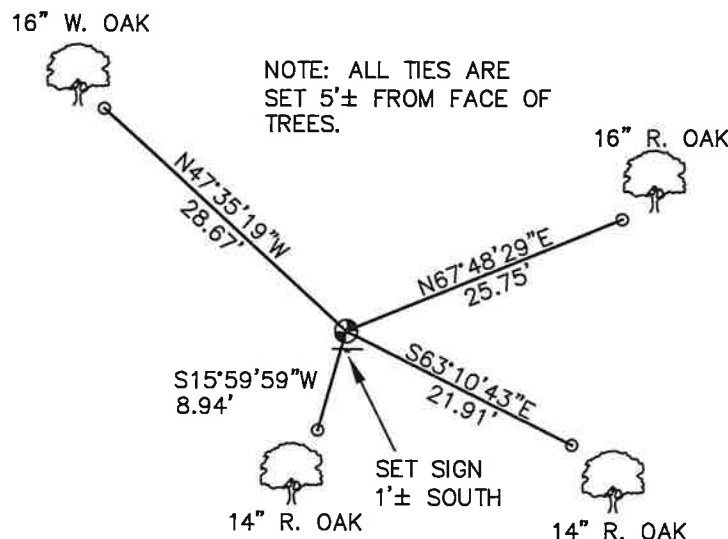
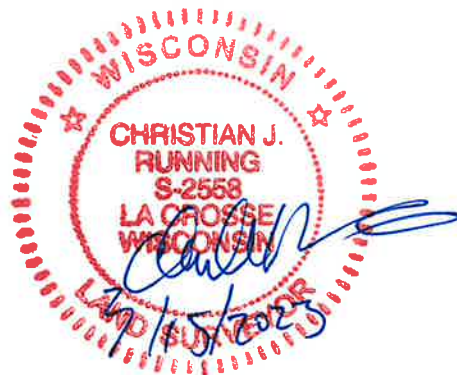
FOUND AND ACCEPTED HOLDEN'S STONE. TOOK NEW TIES AS SHOWN BELOW.

CREW/WITNESS FOR CORNER LOCATION  
-CHRISTIAN J. RUNNING

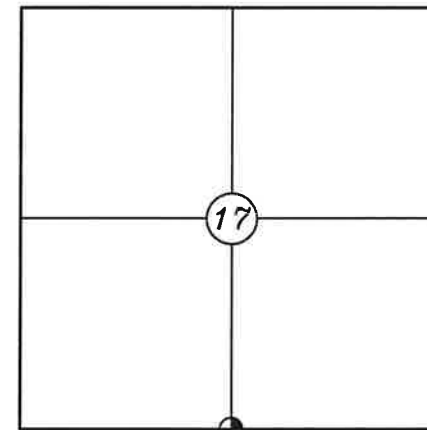
FIELD WORK COMPLETED 3/08/2023

I, CHRISTIAN J. RUNNING RLS 2558, HEREBY CERTIFY THAT THE COORDINATES PROVIDED ON THIS RECORD WERE DETERMINED BY ME OR UNDER MY DIRECT SUPERVISION AND THAT THIS FORM IS CORRECT TO THE BEST OF MY KNOWLEDGE AND BELIEF.

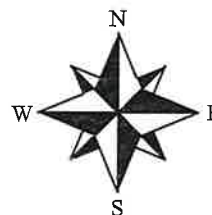
CHRISTIAN J. RUNNING  
PLS 2558  
RUNNING LAND SURVEYING  
700 DAUPHIN ST.  
LA CROSSE, WI 54603



NOTE: ALL TIES ARE SET 5'± FROM FACE OF TREES.



● CORNER LOCATION



NOT TO SCALE

LEGEND

- FOUND HOLDEN'S STONE
- SET 3/4" X 18" IRON BAR 1.5 LB/FT UNLESS NOTED

ALL BEARINGS ARE REFERENCED TO THE MONROE COUNTY COORDINATE SYSTEM NAD 83(2011)

MONROE COUNTY COORDINATES NAD 83(2011)  
NORTHING: 347466.1565  
EASTING: 607981.1414

I, Garold A. Sime, do hereby certify that on the 8th day of September 1980, I found (evidence) (~~no evidence~~) of the North 1/4 corner of Section 20, T 16 N, R 4 W Fourth Principal Meridian, and I re-established said corner according to the Wisconsin Statutes as shown and described hereon.

History of corner establishment since Original Government Survey

Fred Holden set a stone at this corner in 1909.

Description of corner evidence found:

Found Holder's stone and accepted it as the corner.

Dated this 8 day of Sept 1980.

Garold A. Sime

Garold A. Sime, R.L.S. S-1261  
Title



COUNTY SURVEYOR FORM NO. 1

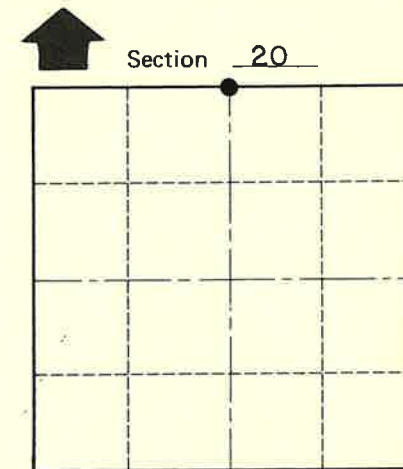
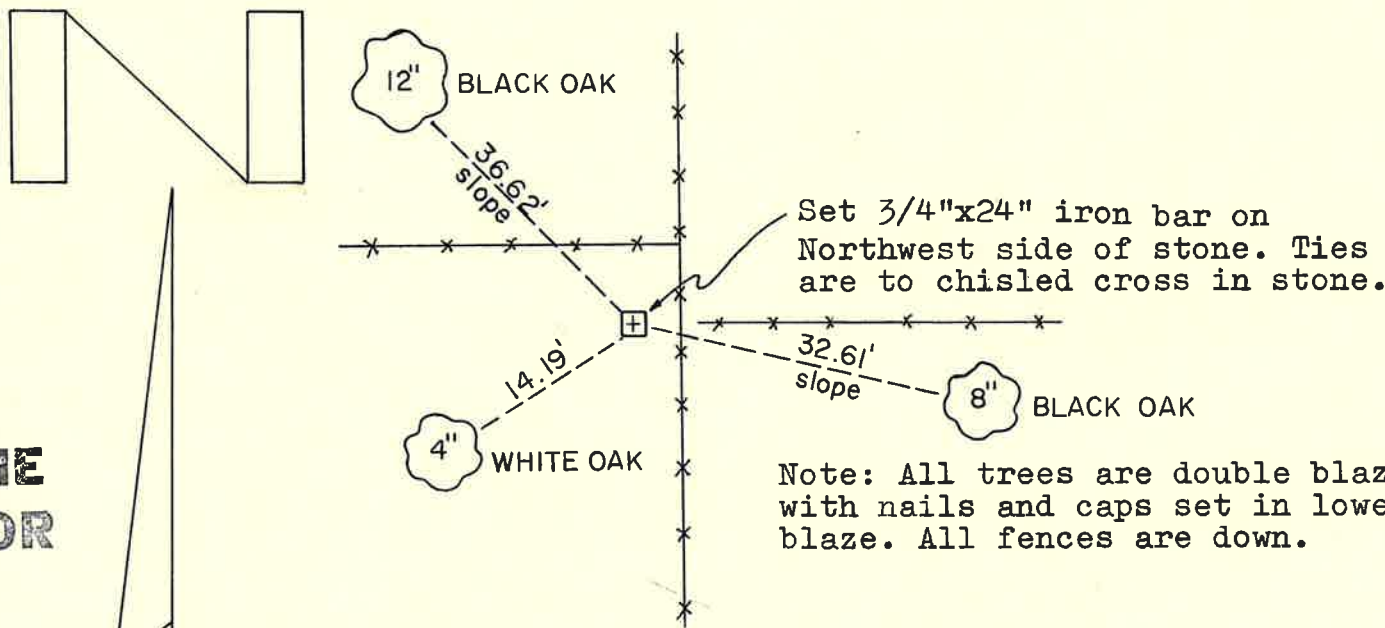
Description of corner and witness monuments, references and accessories used to perpetuate the original or re-established location of this corner:

Witnesses to corner location:

B. Meyer

C. Dade

**Approved: HARLEY A. SIME  
MONROE CO. SURVEYOR**



O = LOCATION CORNER

T 16 N R 4 W  
WISCONSIN

Note: All trees are double blazed with nails and caps set in lower blaze. All fences are down.

SURVEY CONTROL ORDER

Horizontal	_____
Vertical	_____

WISCONSIN COORDINATE SYSTEM

Corner	East (X)	North (Y)	Elevation (Z)	Zone
Control Sta. Name				

City, Village or Town of Leon  
County of Monroe  
Wisconsin