

U.S. PUBLIC LAND SURVEY MONUMENT RECORD

ROMPORTL #21604090000

HISTORY OF CORNER ESTABLISHMENT SINCE THE ORIGINAL GOVERNMENT SURVEY
SEE PREVIOUS TIE SHEET.

**SECTION 16, T16N, R4W
TOWN OF LEON
MONROE COUNTY
WISCONSIN.**

DESCRIPTION OF CORNER EVIDENCE FOUND
FOUND AND ACCEPTED HARRISON MONUMENT AS SET BY GARY DECHANT.

CREW/WITNESS FOR CORNER LOCATION
-CHRISTIAN J. RUNNING
-LEIGH A. RUNNING

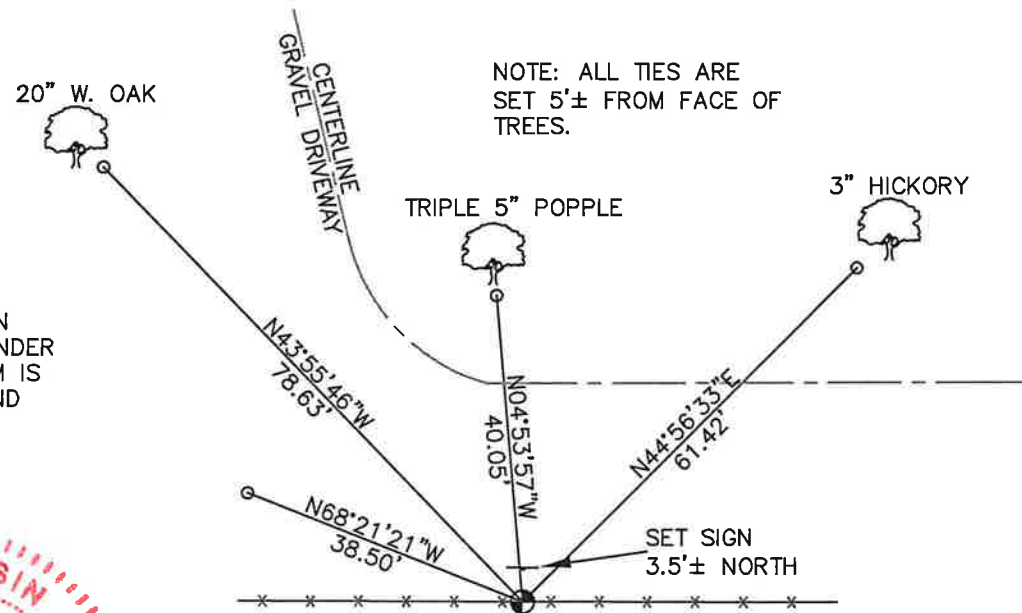
FIELD WORK COMPLETED 7/25/2023

I, CHRISTIAN J. RUNNING RLS 2558, HEREBY CERTIFY THAT THE COORDINATES PROVIDED ON THIS RECORD WERE DETERMINED BY ME OR UNDER MY DIRECT SUPERVISION AND THAT THIS FORM IS CORRECT TO THE BEST OF MY KNOWLEDGE AND BELIEF.

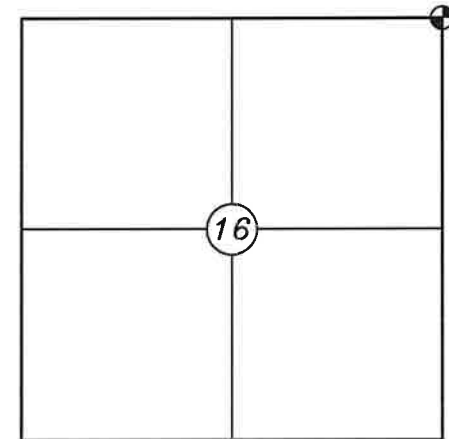
CHRISTIAN J. RUNNING
PLS 2558
RUNNING LAND SURVEYING
700 DAUPHIN ST.
LA CROSSE, WI 54603



MONROE COUNTY COORDINATES NAD 83(2011)
NORTHING: 352879.0438
EASTING: 615880.0639



NOTE: ALL TIES ARE SET 5'± FROM FACE OF TREES.



● CORNER LOCATION

LEGEND

- FOUND HARRISON MONUMENT
- SET 3/4" X 18" IRON BAR 1.5 LB/FT UNLESS NOTED



ALL BEARINGS ARE REFERENCED TO THE MONROE COUNTY COORDINATE SYSTEM NAD 83(2011)

I, Gary L. Dechant, do hereby certify that on the 26th day of March 19 86, I found (evidence) (~~no evidence~~) of the NE corner of Section 16, T 16 N, R 4 W Fourth Principal Meridian, and I re-established said corner according to the Wisconsin Statutes as shown and described hereon.

Dated this 31st day of March 19 86.

Gary L. Dechant
Registered Land Surveyor-1744
Title

History of corner establishment since Original Government Survey

No known recorded history since the original government survey.

Description of corner evidence found:

Accepted fence corner as best available evidence.

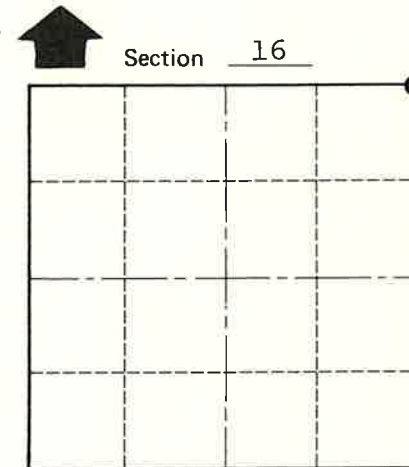
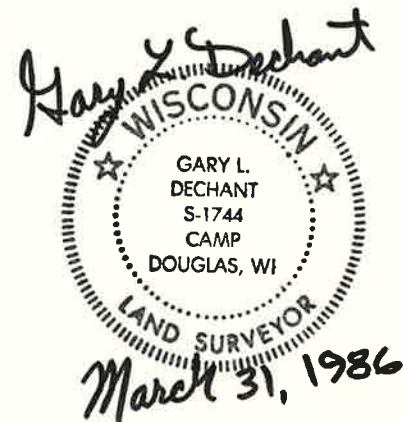
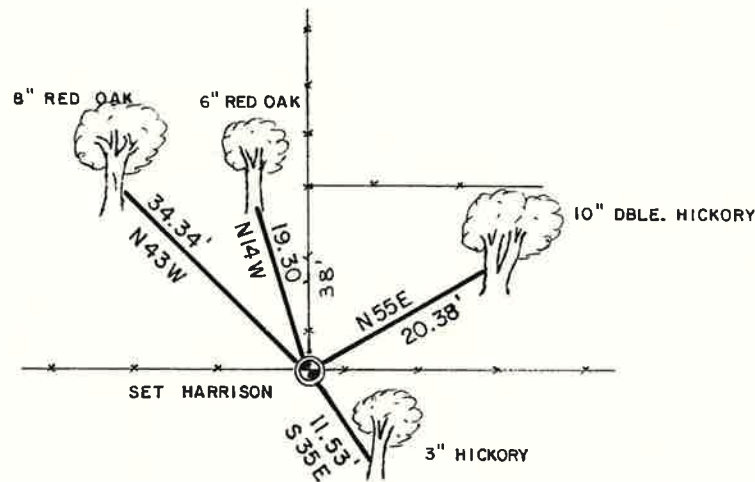
Description of corner and witness monuments, references and accessories used to perpetuate the original or re-established location of this corner:

Cloudy & Warm

Witnesses to corner location:

Claire Noble

Gary Dechant



● = LOCATION CORNER
T 16 N R 4 W
WISCONSIN

(Trees double blazed with N&C's set)

COUNTY SURVEYOR FORM NO. 1

SURVEY CONTROL ORDER

Horizontal	_____
Vertical	_____

WISCONSIN COORDINATE SYSTEM

Corner	East (X)	North (Y)	Elevation (Z)	Zone
Control Sta. Name				

~~City, Village or~~ Town Leon
County of Monroe