

U. S. Public Land Corner Maintenance

48

Corner: S1/4 Sec. 9, T16N-R1W

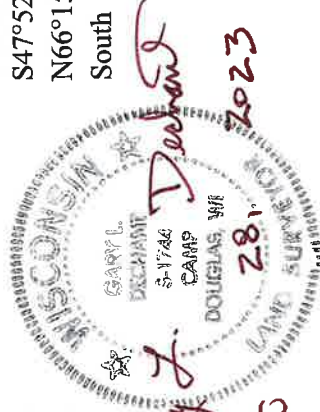
21601090020

<u>Date</u>	<u>Crew</u>	<u>Monument type</u>
August 28, 2023	Zachariah P. Dechant Gary L. Dechant	Found Harrison intact in centerline of CTH "MM". on line with fence running east, 1983 reference markers gone

References:

- 1) Set 5/8"x24" round rebar, in lawn on line with south side porch east of road
- 2) Set 5/8"x24" round rebar, in Amish School yard
- 3) Set 1"x24" angle iron 1' east of right-of-way fence
- 4) Set 1"x24" angle iron 1' east of right-of-way fence
- 5) Found Harrison at S1/4 Section 16 (direct shot)

ASSUMED NORTH bearings



I, William C. Jung, do hereby certify that on the 5th day of April 1983, I found ~~(evidence)~~ ~~(no evidence)~~ of the South 1/4 corner of Section 9, T 16 N, R 1 W Fourth Principal Meridian, and I re-established said corner according to the Wisconsin Statutes as shown and described hereon.

History of corner establishment since Original Government Survey

O.R. Dahl was at this corner in June of 1869. Kenyon (or Schroeder?) was at this corner in April of 1892 and December of 1895. In June of 1931, O. Bergman found an iron stake at this corner. In 1973 Bud Pergande told Harley Sime that there was a pipe at this corner, down 2'±.

Description of corner evidence found:

I found an iron monument at the corner, down about 2'. I set the top 23" of a Harrison marker, down 1/2", over the existing monument. The Harrison is 1' East of the centerline. There are nail and caps 1' West and 1' South of the Harrison.

Dated this 2nd day of March 1984.

William C. Jung

Deputy County Surveyor, R.L.S. 1323

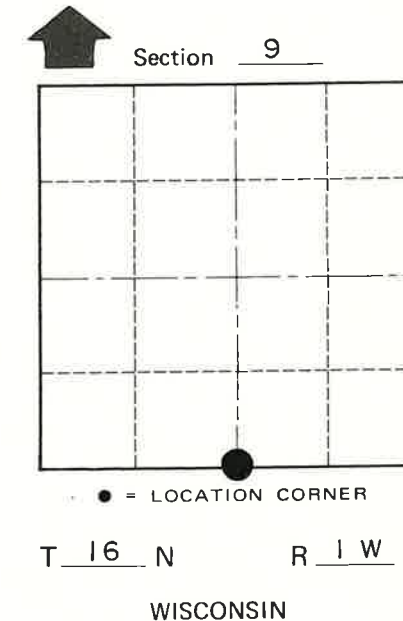
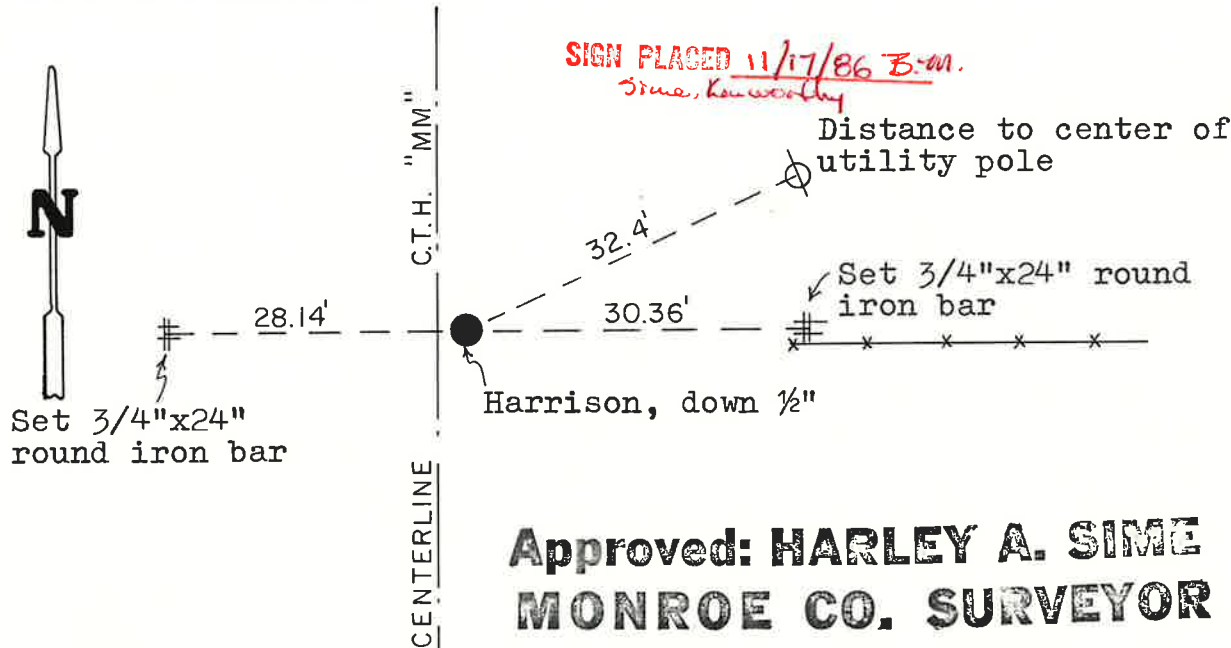
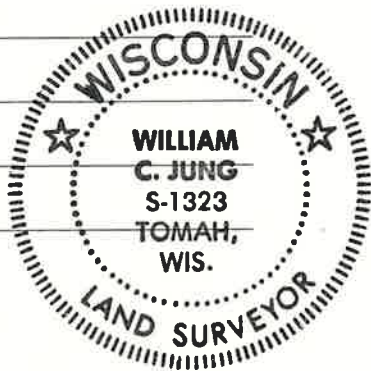
Title

See Reverse Side For Maintenance

Description of corner and witness monuments, references and accessories used to perpetuate the original or re-established location of this corner:

Witnesses to corner location:

William C. Jung



**Approved: HARLEY A. SIME
MONROE CO. SURVEYOR**

SURVEY CONTROL ORDER

Horizontal	_____
Vertical	_____

WISCONSIN COORDINATE SYSTEM

Corner	East (X)	North (Y)	Elevation (Z)	Zone
Control Sta. Name				

City, Village or Town _____ of Wilton
County of Monroe
Wisconsin

COUNTY SURVEYOR FORM NO. 1