

U.S. PUBLIC LAND SURVEY MONUMENT RECORD

ROMPORTL #21504292020

HISTORY OF CORNER ESTABLISHMENT SINCE THE ORIGINAL GOVERNMENT SURVEY
SEE PREVIOUS TIE SHEET.

DESCRIPTION OF CORNER EVIDENCE FOUND

FOUND AND ACCEPTED 1 1/4" IRON BAR AS SET BY BILL JUNG AND TOOK NEW TIES AS SHOWN.

CREW/WITNESS FOR CORNER LOCATION
-CHRISTIAN J. RUNNING

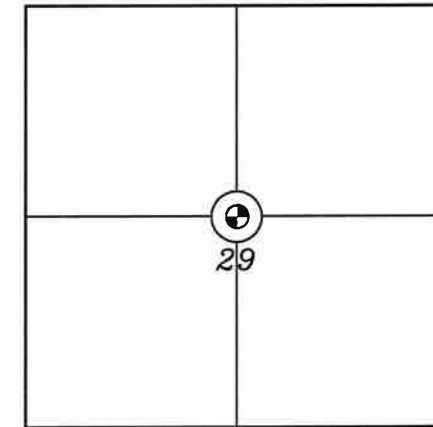
FIELD WORK COMPLETED 9/08/2023

I, CHRISTIAN J. RUNNING RLS 2558, HEREBY CERTIFY THAT THE COORDINATES PROVIDED ON THIS RECORD WERE DETERMINED BY ME OR UNDER MY DIRECT SUPERVISION AND THAT THIS FORM IS CORRECT TO THE BEST OF MY KNOWLEDGE AND BELIEF.

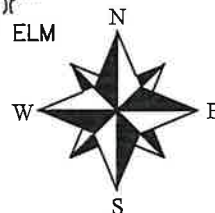
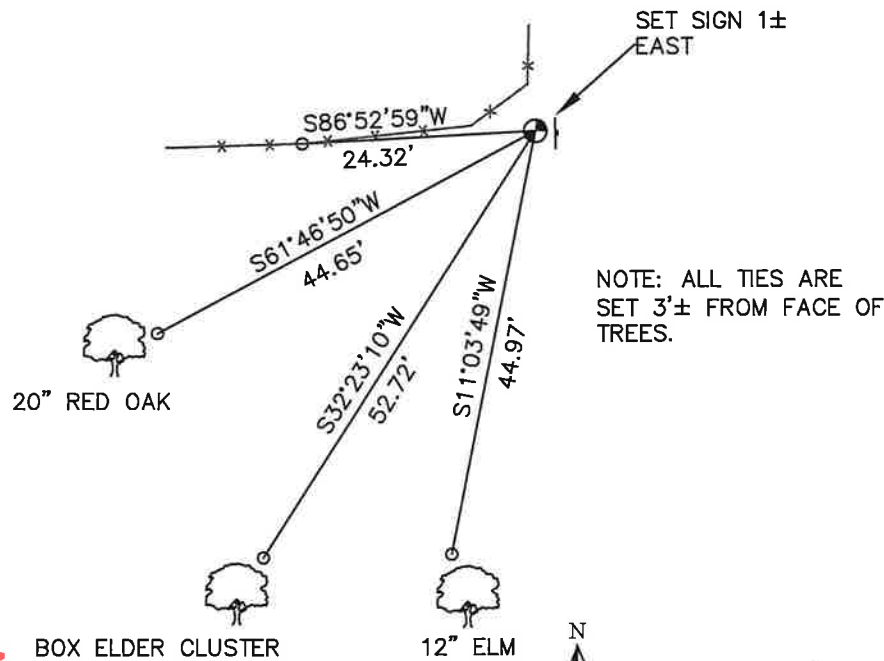
CHRISTIAN J. RUNNING
PLS 2558
RUNNING LAND SURVEYING
700 DAUPHIN ST.
LA CROSSE, WI 54603



SECTION 29, T15N, R4W
TOWN OF PORTLAND
MONROE COUNTY
WISCONSIN.



⊕ CORNER LOCATION



NOT TO SCALE

LEGEND

- ⊕ FOUND 1 1/4" IRON BAR
- SET 3/4" X 18" IRON BAR 1.5 LB/FT UNLESS NOTED

ALL BEARINGS ARE REFERENCED TO THE MONROE COUNTY COORDINATE SYSTEM NAD 83(2011)

MONROE COUNTY COORDINATES NAD 83(2011)
NORTHING: 307879.6597
EASTING: 607832.2161

I, William C. Jung, do hereby certify that on the 9th day of January 19 80, I found (evidence) () of the Center 1/4 corner of Section 29, T 15 N, R 4 W, Fourth Principal Meridian, and I re-established said corner according to the Wisconsin Statutes as shown and described hereon.

Dated this 5th day of Feb. 19 81.

William C. Jung

William C. Jung, R.L.S. 1323

Approved: ^{Title} **HARLEY A. SIME**
MONROE CO. SURVEYOR

Description of corner and witness monuments, references and accessories used to perpetuate the original or re-established location of this corner:

History of original corner establishment:

O. R. Dahl set this corner in an irregular fashion in January of 1869.

Description of corner evidence found:

Field evidence would indicate that this corner is the point originally set by Dahl. Accepted the occupied corner as the best available evidence of Dahl's corner.

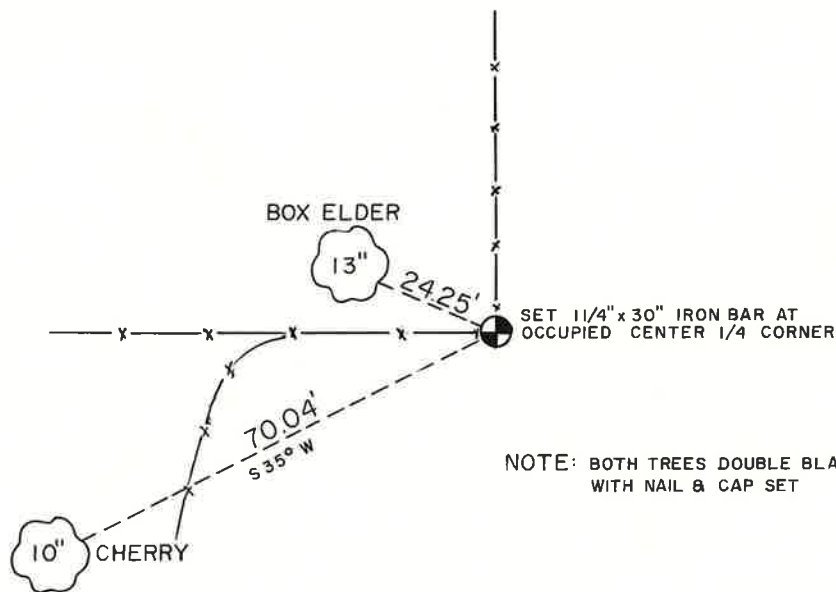
COUNTY SURVEYOR FORM NO. 1

Witnesses to corner location:

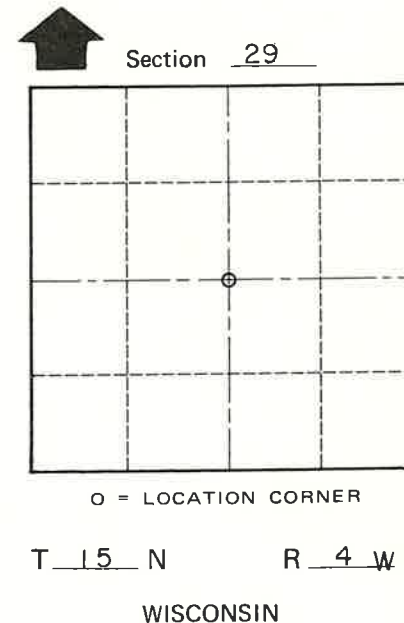
Jung

Dechant

Tormoen



NOTE: BOTH TREES DOUBLE BLAZED WITH NAIL & CAP SET



SURVEY CONTROL ORDER

Horizontal	_____
Vertical	_____

WISCONSIN COORDINATE SYSTEM

Corner	East (X)	North (Y)	Elevation (Z)	Zone
Control Sta. Name				

or Town Portland
 County of Monroe