

U.S. PUBLIC LAND SURVEY MONUMENT RECORD

ROMPORTL #21504210000

HISTORY OF CORNER ESTABLISHMENT SINCE THE ORIGINAL GOVERNMENT SURVEY
SEE PREVIOUS TIE SHEET.

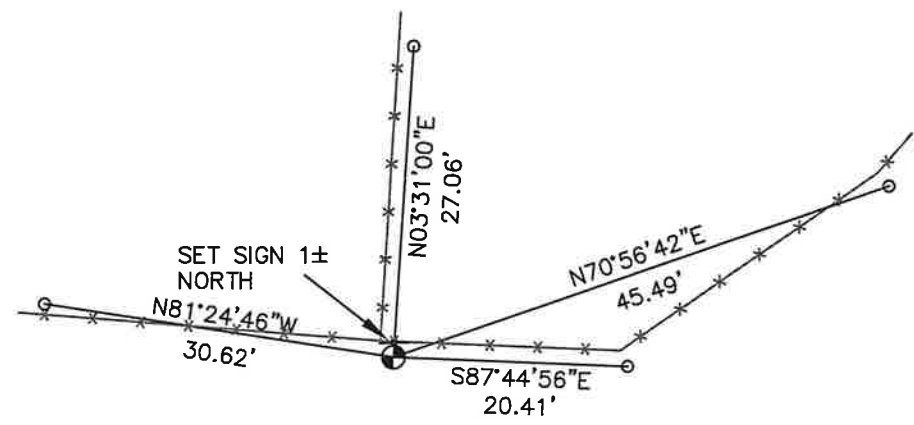
DESCRIPTION OF CORNER EVIDENCE FOUND
FOUND AND ACCEPTED HARRISON MONUMENT AS SET BY ROBERT LAMPMAN AND TOOK NEW TIES AS SHOWN.

CREW/WITNESS FOR CORNER LOCATION
-CHRISTIAN J. RUNNING
-

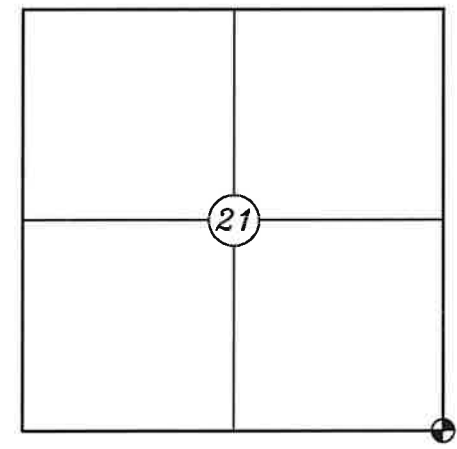
FIELD WORK COMPLETED 9/07/2023

I, CHRISTIAN J. RUNNING RLS 2558, HEREBY CERTIFY THAT THE COORDINATES PROVIDED ON THIS RECORD WERE DETERMINED BY ME OR UNDER MY DIRECT SUPERVISION AND THAT THIS FORM IS CORRECT TO THE BEST OF MY KNOWLEDGE AND BELIEF.

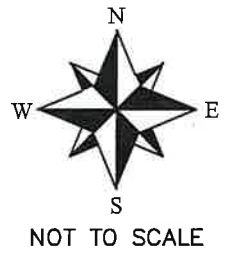
CHRISTIAN J. RUNNING
PLS 2558
RUNNING LAND SURVEYING
700 DAUPHIN ST.
LA CROSSE, WI 54603



SECTION 21, T15N, R4W
TOWN OF PORTLAND
MONROE COUNTY
WISCONSIN.



● CORNER LOCATION



LEGEND

- FOUND HARRISON
- SET 3/4" X 18" IRON BAR 1.5 LB/FT UNLESS NOTED

ALL BEARINGS ARE REFERENCED TO THE MONROE COUNTY COORDINATE SYSTEM NAD 83(2011)

MONROE COUNTY COORDINATES NAD 83(2011)
NORTHING: 310457.0039
EASTING: 615759.8888

CERTIFICATE

CERTIFIED LAND CORNER

21504210000 No. 87

I, Robert M. Lampman, do hereby certify that on the 16th day of April 19 96, I found ~~evidence~~ (no evidence) of the SE corner of Section 21, T 15 N, R 4 W Fourth Principal Meridian, and I re-established said corner according to the Wisconsin Statutes as shown and described hereon.

Dated this 23rd day of April 19 96.

Robert M. Lampman

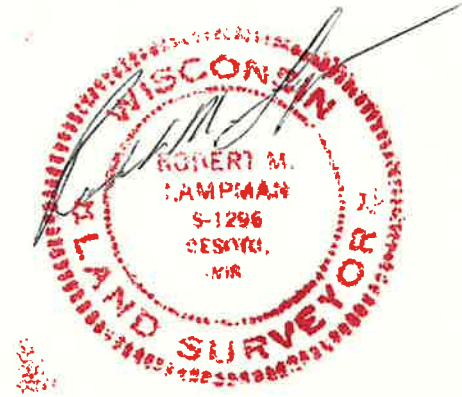
R.L.S. S-1296
Title

History of corner establishment since Original Government Survey

No record of this corner since the original Government Survey.

Description of corner evidence found:

Owner of land to the North of the corner showed me to the corner. Found buried portion of old decayed fence corner post. Located post and checked distance North to the East 1/4 corner of Section 21. Distance matched original within roughly 4 feet. Removed remaining portion of old corner post and set Harrison monument.



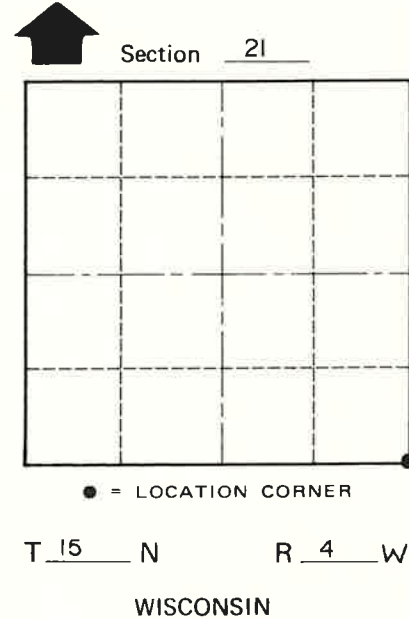
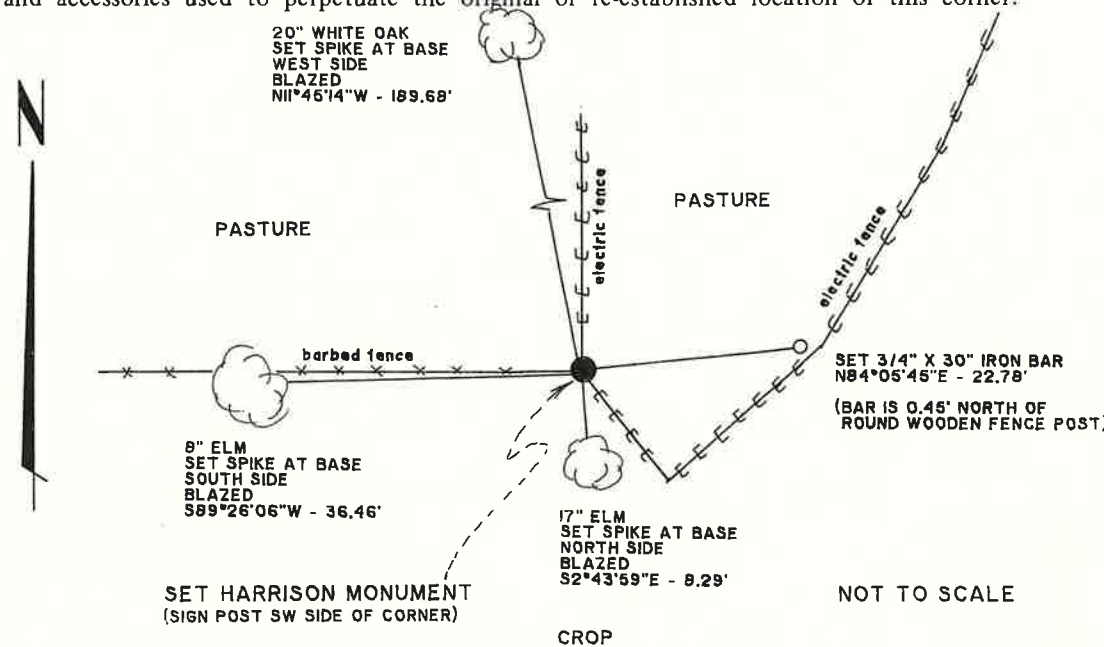
COUNTY SURVEYOR FORM NO. 1

Description of corner and witness monuments, references and accessories used to perpetuate the original or re-established location of this corner:

Witnesses to corner location:

Douglas Malliet R.L.S.

Jessica A. Zamor



SURVEY CONTROL ORDER

Horizontal	_____
Vertical	_____

WISCONSIN COORDINATE SYSTEM

Corner	East (X)	North (Y)	Elevation (Z)	Zone
Control Sta. Name				

City, Village or Town Portland
County of Monroe