

U.S. PUBLIC LAND SURVEY MONUMENT RECORD

HISTORY OF CORNER ESTABLISHMENT SINCE THE ORIGINAL GOVERNMENT SURVEY
SEE PREVIOUS TIE SHEET.

DESCRIPTION OF CORNER EVIDENCE FOUND

FOUND AND ACCEPTED HARRISON MONUMENT AS SET BY F. CURTIS CROOK AND TOOK NEW TIES AS SHOWN.

CREW/WITNESS FOR CORNER LOCATION
-CHRISTIAN J. RUNNING
-

FIELD WORK COMPLETED 9/07/2023

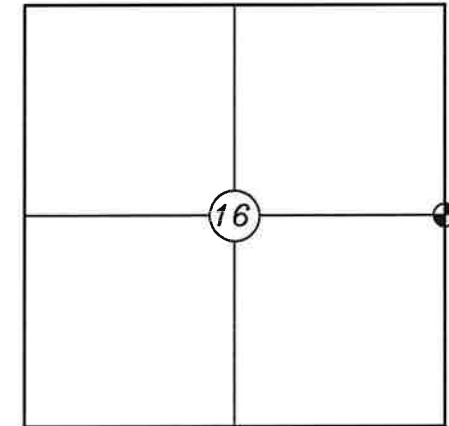
I, CHRISTIAN J. RUNNING RLS 2558, HEREBY CERTIFY THAT THE COORDINATES PROVIDED ON THIS RECORD WERE DETERMINED BY ME OR UNDER MY DIRECT SUPERVISION AND THAT THIS FORM IS CORRECT TO THE BEST OF MY KNOWLEDGE AND BELIEF.

CHRISTIAN J. RUNNING
PLS 2558
RUNNING LAND SURVEYING
700 DAUPHIN ST.
LA CROSSE, WI 54603

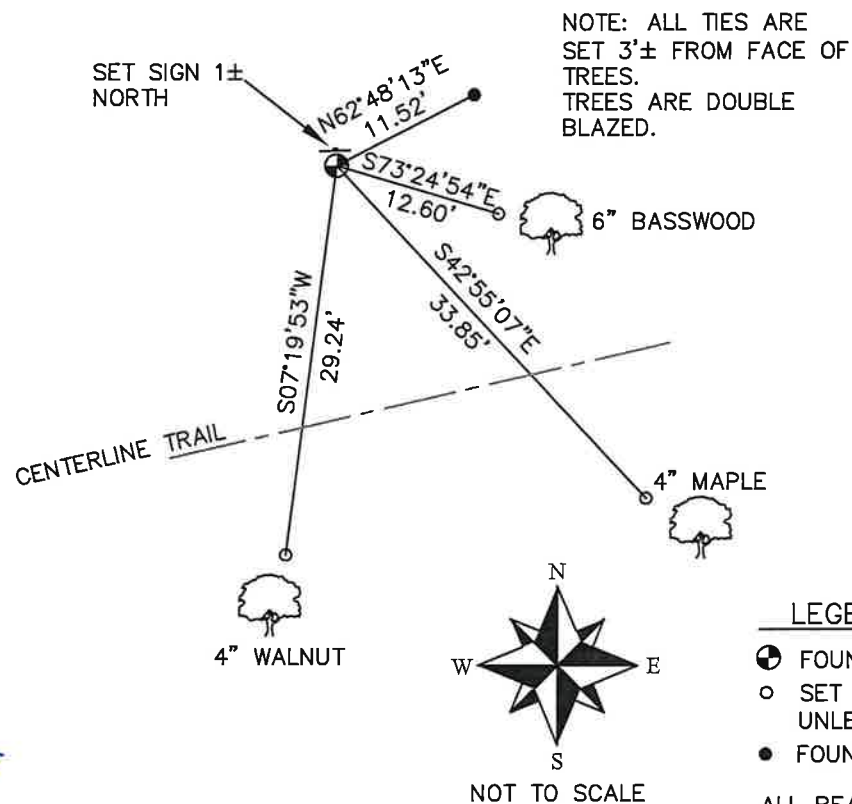


MONROE COUNTY COORDINATES NAD 83(2011)
NORTHING: 318402.9398
EASTING: 615716.7188

SECTION 16, T15N, R4W
TOWN OF PORTLAND
MONROE COUNTY
WISCONSIN.



● CORNER LOCATION



NOTE: ALL TIES ARE SET 3'± FROM FACE OF TREES. TREES ARE DOUBLE BLAZED.

LEGEND

- FOUND HARRISON
- SET 3/4" X 18" IRON BAR 1.5 LB/FT UNLESS NOTED
- FOUND 1" IRON PIPE

ALL BEARINGS ARE REFERENCED TO THE MONROE COUNTY COORDINATE SYSTEM NAD 83(2011)

I, F. Curtis Crook, do hereby certify that on the 28th day of January 1987, I found (evidence) (~~no evidence~~) of the East 1/4 corner of Section 16, T. 15 N, R. 4 Fourth Principal Meridian, and I re-established said corner according to the Wisconsin Statutes as shown and described hereon.

Dated this 29th day of Jan. 1987.

F Curtis Crook

RLS #1292 Title

History of corner establishment since Original Government Survey

Henry Maddin subdivided the Township during Feb. 23rd - March 28th 1847

Description of corner evidence found: 30" 2X2 wood stake, sharpened and painted (flourescent) at fence corner leading West and North. Landowners for 40+ years say 'it*' has not been disputed.

* (fencelines; wood stake origin unknown)

COUNTY SURVEYOR FORM NO. 1

Description of corner and witness monuments, references and accessories used to perpetuate the original or re-established location of this corner:

Witnesses to corner location:

F. Curtis Crook

Bruce Martin

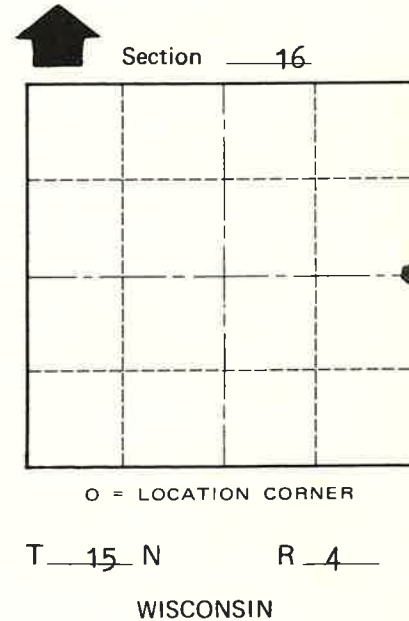
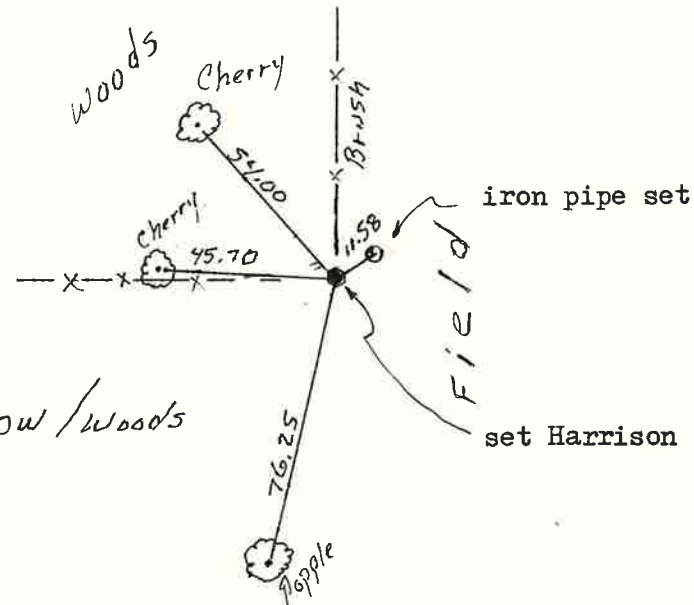
#1 (N 60° E 11.58') 1" iron pipe placed flush at East side of brush line and West side field road.

the following have P.K. nails placed in blaze on tree face:

#2 (S 12° W 76.25') 8" Poplar

#3 (N 88° W 45.70') 30" B. Cherry

#4 (N 43° W 54.00') 24" B. Cherry



Bearings by compass

Scale: 1"=50'

SURVEY CONTROL ORDER

Horizontal	
Vertical	

WISCONSIN COORDINATE SYSTEM

Corner	East (X)	North (Y)	Elevation (Z)	Zone
Control Sta. Name				

City, Village or Town Portland
 County of Monroe