

U.S. PUBLIC LAND SURVEY MONUMENT RECORD

HISTORY OF CORNER ESTABLISHMENT SINCE THE ORIGINAL GOVERNMENT SURVEY
SEE PREVIOUS TIE SHEET.

DESCRIPTION OF CORNER EVIDENCE FOUND

FOUND AND ACCEPTED HARRISON MONUMENT AS SET BY BRYAN MEYER AND TOOK NEW TIES AS SHOWN. THE TOP 12"± OF THE HARRISON WAS BROKE OFF. DUE TO THE ROCKY GROUND, I ELECTED TO LEAVE THE BOTTOM IN PLACE AND NOT REPLACE IT.

CREW/WITNESS FOR CORNER LOCATION
-CHRISTIAN J. RUNNING

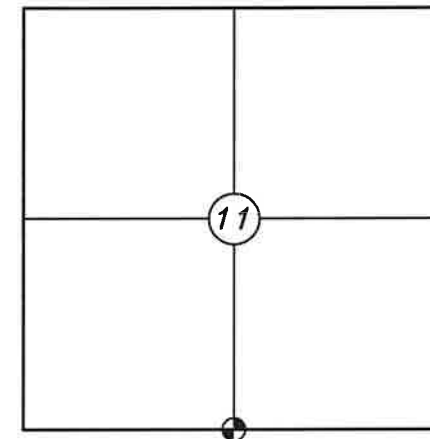
FIELD WORK COMPLETED 9/07/2023

I, CHRISTIAN J. RUNNING RLS 2558, HEREBY CERTIFY THAT THE COORDINATES PROVIDED ON THIS RECORD WERE DETERMINED BY ME OR UNDER MY DIRECT SUPERVISION AND THAT THIS FORM IS CORRECT TO THE BEST OF MY KNOWLEDGE AND BELIEF.

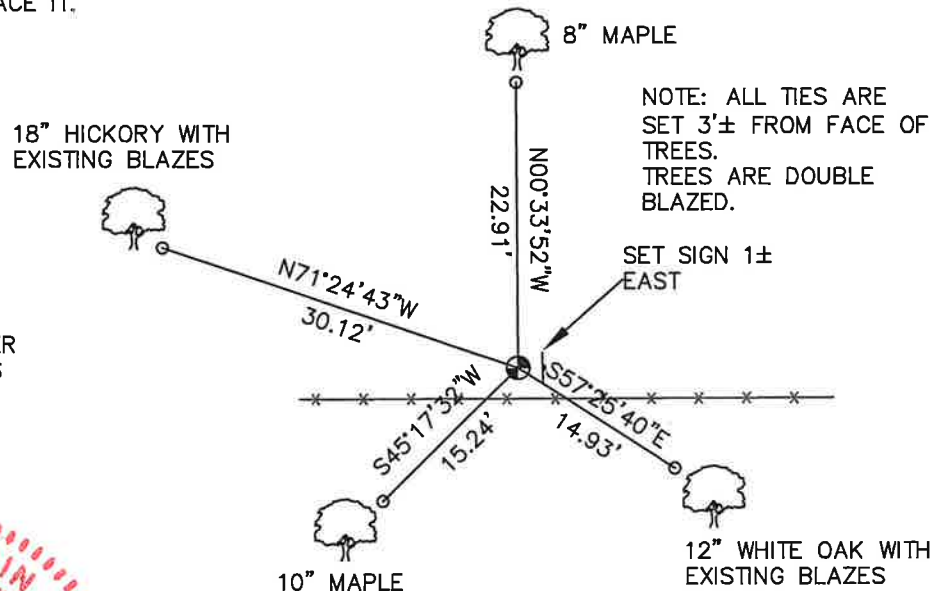
CHRISTIAN J. RUNNING
PLS 2558
RUNNING LAND SURVEYING
700 DAUPHIN ST.
LA CROSSE, WI 54603



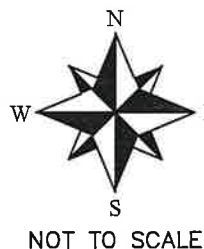
**SECTION 11, T15N, R4W
TOWN OF PORTLAND
MONROE COUNTY
WISCONSIN.**



● CORNER LOCATION



NOTE: ALL TIES ARE SET 3'± FROM FACE OF TREES. TREES ARE DOUBLE BLAZED.



LEGEND

- FOUND HARRISON
- SET 3/4" X 18" IRON BAR 1.5 LB/FT UNLESS NOTED

ALL BEARINGS ARE REFERENCED TO THE MONROE COUNTY COORDINATE SYSTEM NAD 83(2011)

MONROE COUNTY COORDINATES NAD 83(2011)
NORTHING: 321060.4547
EASTING: 623594.9232

I, Bryan H. Meyer, do hereby certify that on the 9th day of May 19 83, I found ~~evidence~~ (no evidence) of the North 1/4 corner of Section 14, T 15 N, R 4 W Fourth Principal Meridian, and I re-established said corner according to the Wisconsin Statutes as shown and described hereon.

Dated this 13th day of May 19 83.

Bryan H. Meyer
Deputy County Surveyor
Title

History of corner establishment since Original Government Survey

O. R. Dahl was here in January of 1869.

Description of corner evidence found:

I established this corner by doubling over the bearing and distance of the line which runs along the North line of the NE¹/₄-NE¹/₄ of Section 14.



COUNTY SURVEYOR FORM NO. 1

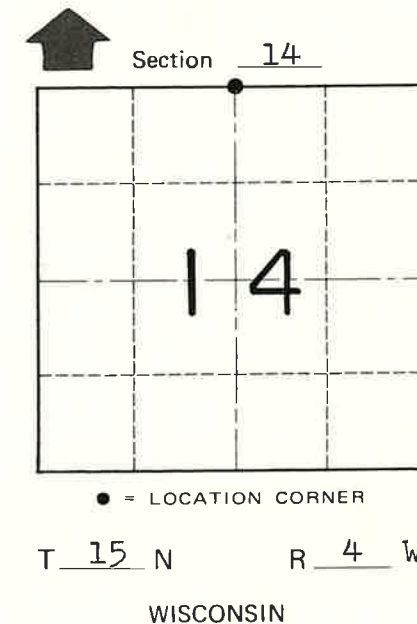
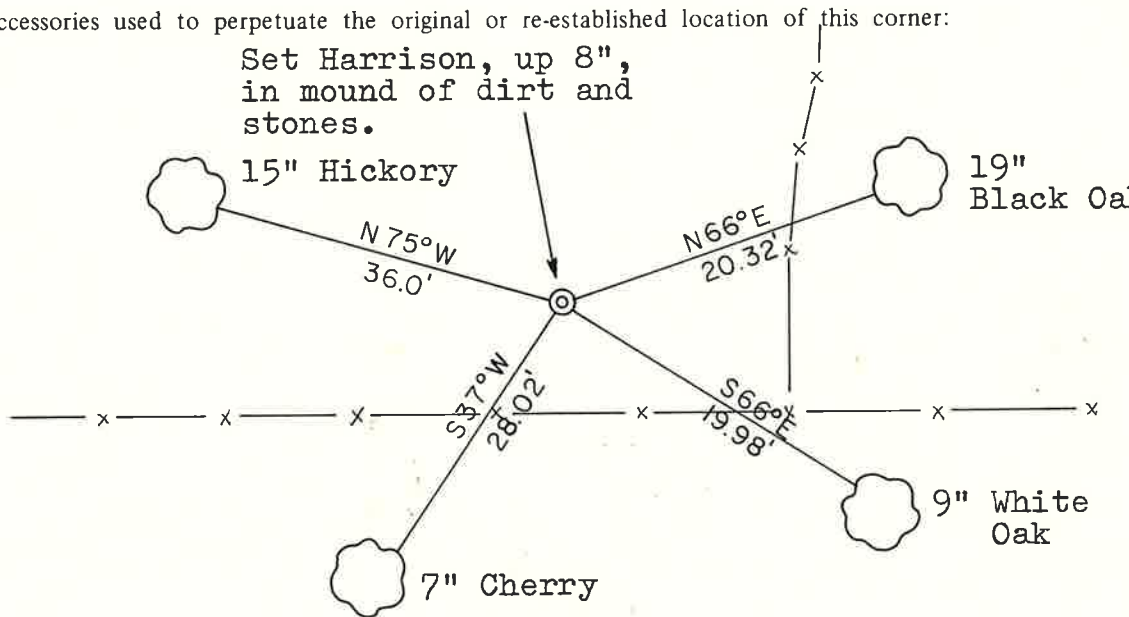
Description of corner and witness monuments, references and accessories used to perpetuate the original or re-established location of this corner:

Date: May 9, 1983 - 2:30 P.M.
Weather: Sunny, Windy, 60°±.

Witnesses to corner location:

Bryan H. Meyer
Dallas Wilhite

**Approved: HARLEY A. SIME
MONROE CO. SURVEYOR**



The 4 bearing trees shown are double blazed with each distance to a nail in a hack on the side of each tree.

WISCONSIN COORDINATE SYSTEM

SURVEY CONTROL ORDER

Horizontal	_____
Vertical	_____

Corner	East (X)	North (Y)	Elevation (Z)	Zone
Control Sta. Name				

~~City Village or~~ Town of Portland
County of Monroe