

U.S. PUBLIC LAND SURVEY MONUMENT RECORD

HISTORY OF CORNER ESTABLISHMENT SINCE THE ORIGINAL GOVERNMENT SURVEY
SEE PREVIOUS TIE SHEET.

DESCRIPTION OF CORNER EVIDENCE FOUND

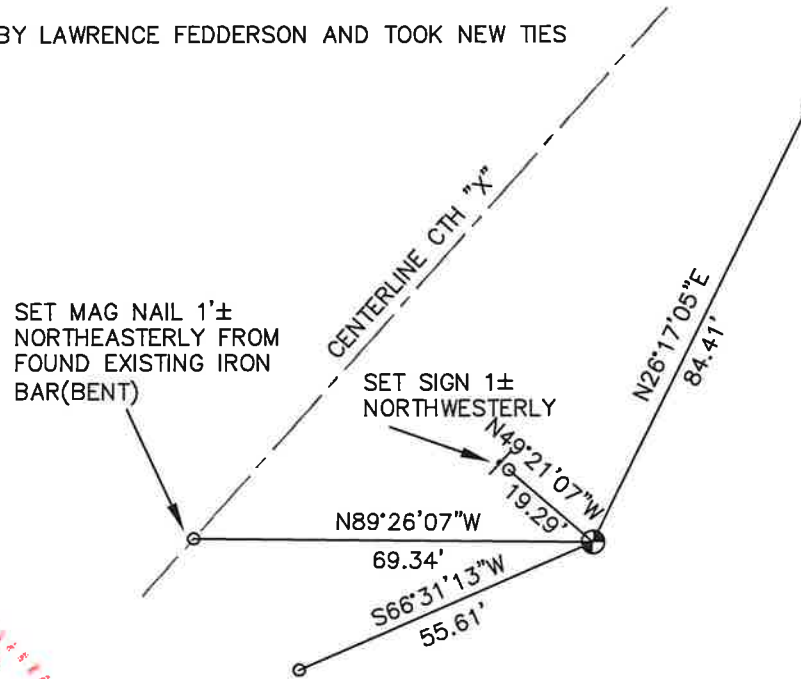
FOUND AND ACCEPTED HARRISON MONUMENT AS SET BY LAWRENCE FEDDERSON AND TOOK NEW TIES AS SHOWN.

CREW/WITNESS FOR CORNER LOCATION
-CHRISTIAN J. RUNNING
-

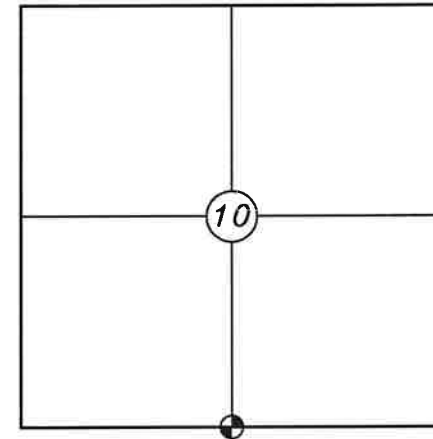
FIELD WORK COMPLETED 9/07/2023

I, CHRISTIAN J. RUNNING RLS 2558, HEREBY CERTIFY THAT THE COORDINATES PROVIDED ON THIS RECORD WERE DETERMINED BY ME OR UNDER MY DIRECT SUPERVISION AND THAT THIS FORM IS CORRECT TO THE BEST OF MY KNOWLEDGE AND BELIEF.

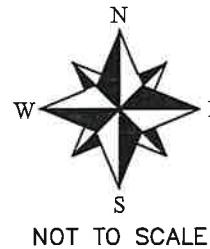
CHRISTIAN J. RUNNING
PLS 2558
RUNNING LAND SURVEYING
700 DAUPHIN ST.
LA CROSSE, WI 54603



SECTION 10, T15N, R4W
TOWN OF PORTLAND
MONROE COUNTY
WISCONSIN.



⊕ CORNER LOCATION



LEGEND

- ⊕ FOUND HARRISON, 17" DEEP IN HAYFIELD
- SET 3/4" X 18" IRON BAR 1.5 LB/FT UNLESS NOTED

ALL BEARINGS ARE REFERENCED TO THE MONROE COUNTY COORDINATE SYSTEM NAD 83(2011)

MONROE COUNTY COORDINATES NAD 83(2011)
NORTHING: 321044.5455
EASTING: 618337.0731

I, Lawrence A. Feddersen, do hereby certify that on the First day of September 1992, I found ~~(no evidence)~~ (no evidence) of the N $\frac{1}{4}$ corner of Section 15, T 15 N, R 4 W Fourth Principal Meridian, and I re-established said corner according to the Wisconsin Statutes as shown and described hereon.

Dated this 2nd day of Sept. 1992.

Lawrence A. Feddersen

Registered Land Surveyor, S-1226
Title

History of corner establishment since Original Government Survey

No known history recorded since original government survey.

Description of corner evidence found:

No evidence of occupation or corner was found. Corner was set on a straight line and half way between the Northwest corner of Section 15 and the Northeast corner of Section 15.

COUNTY SURVEYOR FORM NO. 1

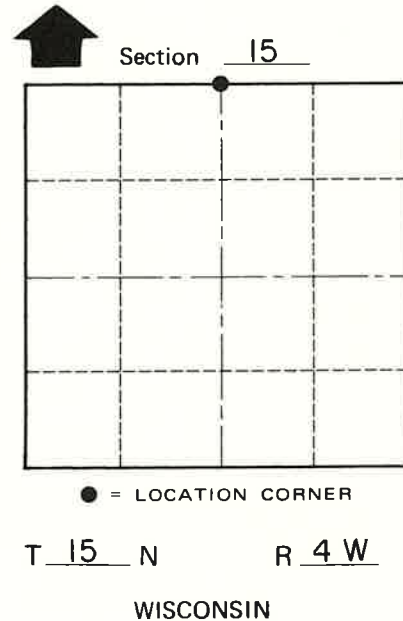
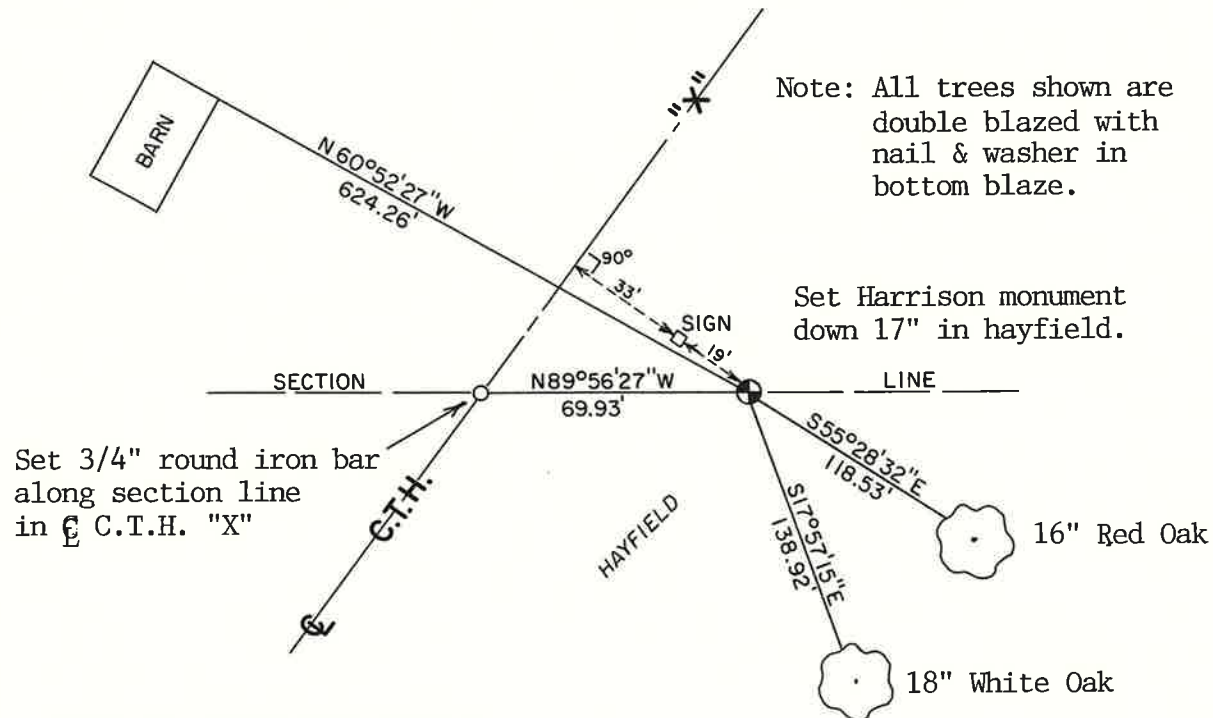
Description of corner and witness monuments, references and accessories used to perpetuate the original or re-established location of this corner:

Witnesses to corner location:

Lawrence A. Feddersen

Timothy J. Jeatran

Henry V. Amberson



SURVEY CONTROL ORDER

Horizontal _____

Vertical _____

WISCONSIN COORDINATE SYSTEM

Corner	East (X)	North (Y)	Elevation (Z)	Zone
Control Sta. Name				

City, Village or Town of Portland
County of Monroe