

U.S. PUBLIC LAND SURVEY MONUMENT RECORD

ROMPORTL #21504050000

HISTORY OF CORNER ESTABLISHMENT SINCE THE ORIGINAL GOVERNMENT SURVEY
SEE PREVIOUS TIE SHEET.

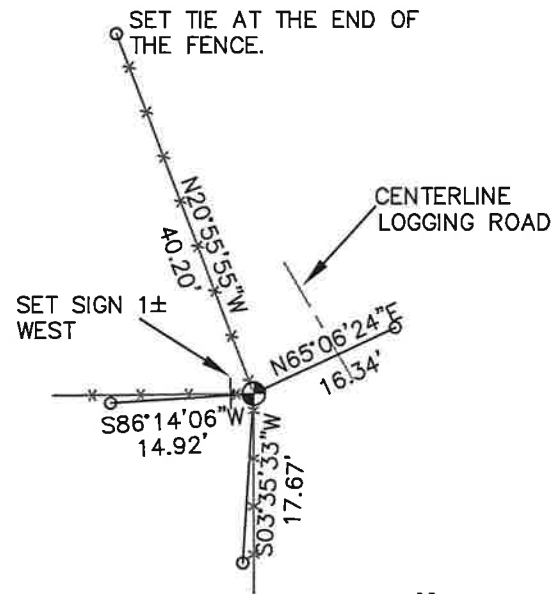
DESCRIPTION OF CORNER EVIDENCE FOUND
FOUND AND ACCEPTED HARRISON MONUMENT AS SET BY BRYAN MEYER AND TOOK NEW TIES AS SHOWN.

CREW/WITNESS FOR CORNER LOCATION
-CHRISTIAN J. RUNNING
-

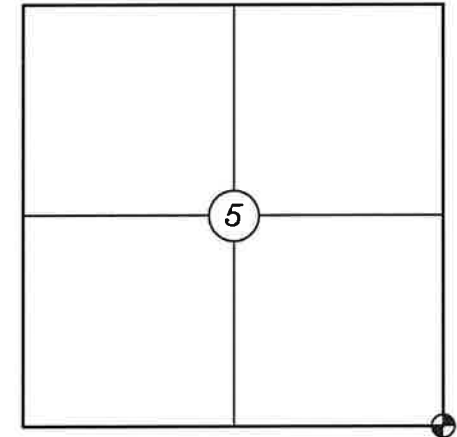
FIELD WORK COMPLETED 9/07/2023

I, CHRISTIAN J. RUNNING RLS 2558, HEREBY CERTIFY THAT THE COORDINATES PROVIDED ON THIS RECORD WERE DETERMINED BY ME OR UNDER MY DIRECT SUPERVISION AND THAT THIS FORM IS CORRECT TO THE BEST OF MY KNOWLEDGE AND BELIEF.

CHRISTIAN J. RUNNING
PLS 2558
RUNNING LAND SURVEYING
700 DAUPHIN ST.
LA CROSSE, WI 54603



**SECTION 5, T15N, R4W
TOWN OF PORTLAND
MONROE COUNTY
WISCONSIN.**



● CORNER LOCATION

LEGEND

- FOUND HARRISON
- SET 3/4" X 18" IRON BAR 1.5 LB/FT UNLESS NOTED

ALL BEARINGS ARE REFERENCED TO THE MONROE COUNTY COORDINATE SYSTEM NAD 83(2011)

MONROE COUNTY COORDINATES NAD 83(2011)
NORTHING: 326329.6803
EASTING: 610445.7751

I, Bryan H. Meyer, do hereby certify that on the 27th day of December 1989, I found (evidence) ~~(no evidence)~~ of the Northwest corner of Section 9, T 15 N, R 4 W Fourth Principal Meridian, and I re-established said corner according to the Wisconsin Statutes as shown and described hereon.

Dated this 29th day of Dec. 1989.

Bryan H. Meyer
Deputy County Surveyor

History of corner establishment since Original Government Survey

O. R. Dahl was here in August of 1868.

Description of corner evidence found:

I accepted the occupied fence corner as the best available evidence.



H. A. Sime and Associates
P. O. Box 705, Tomah, WI
Phone: (608)-372-5392

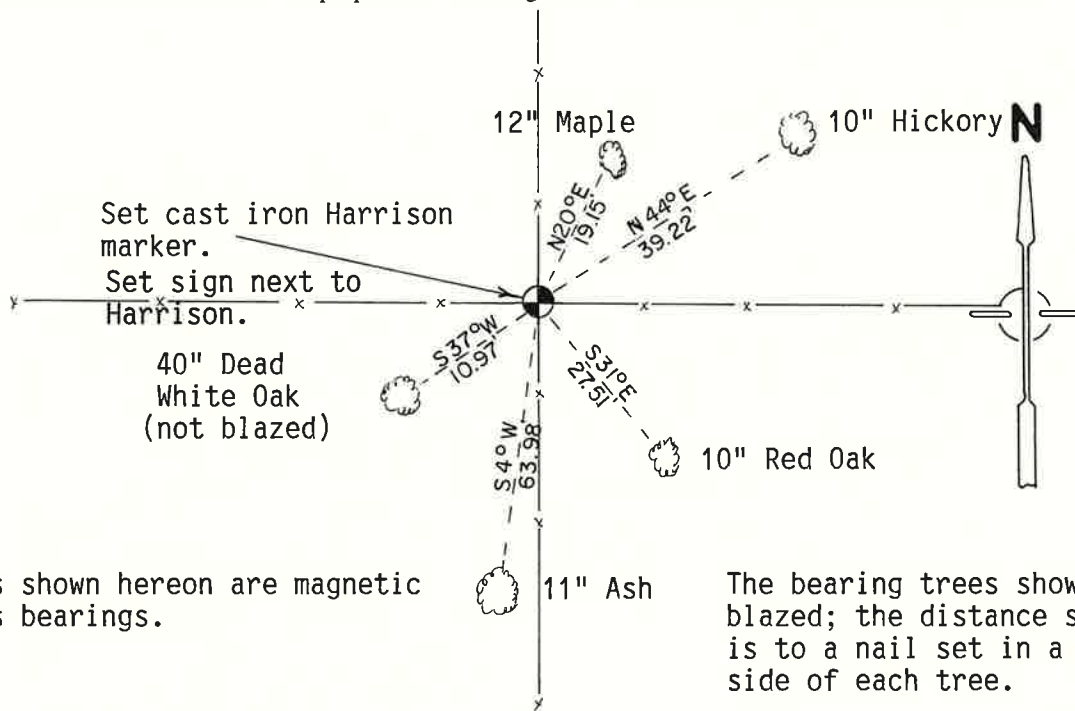
COUNTY SURVEYOR FORM NO. 1

Description of corner and witness monuments, references and accessories used to perpetuate the original or re-established location of this corner:

Crew: Kenworthy, Forsythe
Date: December 27, 1989

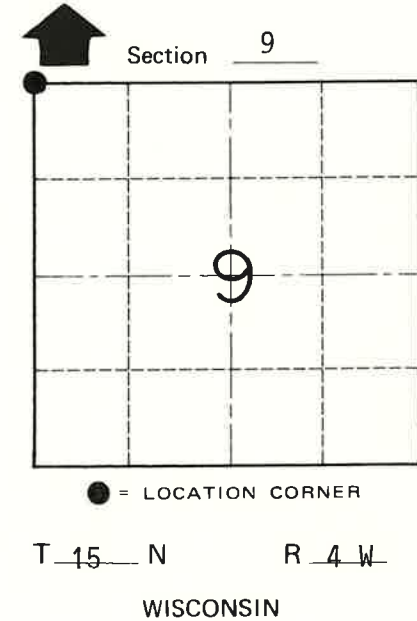
Witnesses to corner location:

John Kenworthy
Brian Forsythe
Bryan H. Meyer



The bearings shown hereon are magnetic hand compass bearings.

The bearing trees shown are double blazed; the distance shown to each is to a nail set in a hack in the side of each tree.



SURVEY CONTROL ORDER

Horizontal	_____
Vertical	_____

WISCONSIN COORDINATE SYSTEM

Corner	East (X)	North (Y)	Elevation (Z)	Zone
Control Sta. Name				

~~City, Village or~~ Town of Portland
County of Monroe