

# U.S. PUBLIC LAND SURVEY MONUMENT RECORD

ROMPORTL #21504042000

HISTORY OF CORNER ESTABLISHMENT SINCE THE ORIGINAL GOVERNMENT SURVEY  
SEE PREVIOUS TIE SHEET.

DESCRIPTION OF CORNER EVIDENCE FOUND

FOUND AND ACCEPTED HARRISON MONUMENT AS SET BY BRYAN MEYER AND TOOK NEW TIES AS SHOWN.

CREW/WITNESS FOR CORNER LOCATION  
-CHRISTIAN J. RUNNING  
-

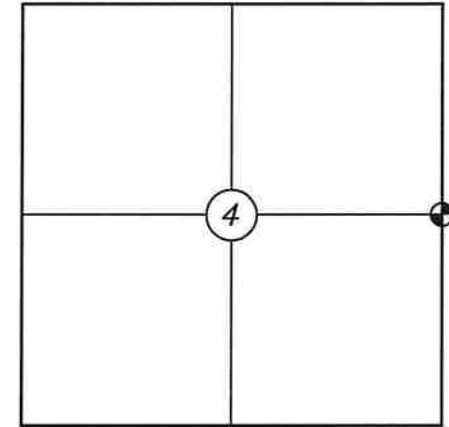
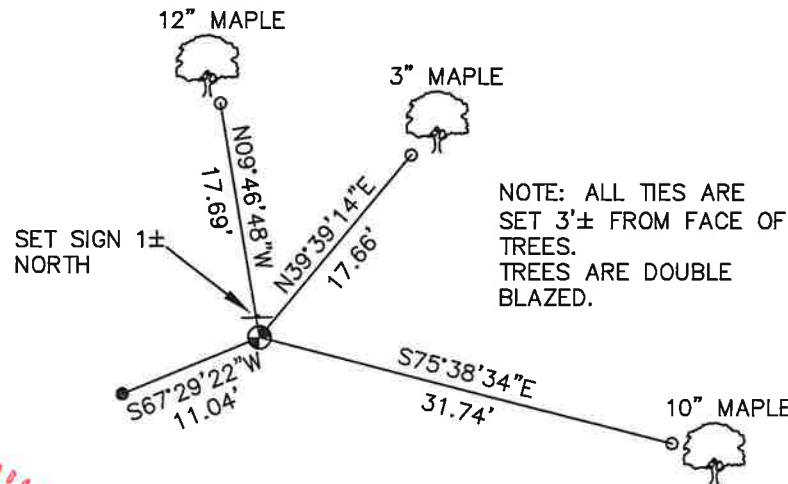
FIELD WORK COMPLETED 9/07/2023

I, CHRISTIAN J. RUNNING RLS 2558, HEREBY CERTIFY THAT THE COORDINATES PROVIDED ON THIS RECORD WERE DETERMINED BY ME OR UNDER MY DIRECT SUPERVISION AND THAT THIS FORM IS CORRECT TO THE BEST OF MY KNOWLEDGE AND BELIEF.

CHRISTIAN J. RUNNING  
PLS 2558  
RUNNING LAND SURVEYING  
700 DAUPHIN ST.  
LA CROSSE, WI 54603



**SECTION 4, T15N, R4W  
TOWN OF PORTLAND  
MONROE COUNTY  
WISCONSIN.**



● CORNER LOCATION



LEGEND

- FOUND HARRISON
- SET 3/4" X 18" IRON BAR 1.5 LB/FT UNLESS NOTED
- FOUND 3/4" IRON BAR

ALL BEARINGS ARE REFERENCED TO THE MONROE COUNTY COORDINATE SYSTEM NAD 83(2011)

MONROE COUNTY COORDINATES NAD 83(2011)  
NORTHING: 328903.7913  
EASTING: 615717.4812

CERTIFICATE

CERTIFIED LAND CORNER

21504042000

No. 17

I, Bryan H. Meyer, do hereby certify that on the 14th day of August 1990, I found (evidence) ~~no evidence~~ of the East 1/4 corner of Section 4, T 15 N, R 4 W Fourth Principal Meridian, and I re-established said corner according to the Wisconsin Statutes as shown and described hereon.

Dated this 17th day of Dec. 1990.

Bryan H. Meyer  
Deputy County Surveyor  
Title

History of corner establishment since Original Government Survey

O. R. Dahl was here in August of 1868. Fred Holden was here in April of 1905 and set a stone with a "+" mark at the corner.

Description of corner evidence found:

I was shown the occupied fence corner by "Bud" Thompson, a local landowner. His father owned the farm prior to him. "Bud" told me that both he and his father accepted this occupied fence corner as the section corner. He told me that he had never seen a stone (with "+" mark) in this area, nor had his father ever mentioned anything about a stone in this area. I searched, probed and dug about a 40' radius around the fence corner but did not find Holden's stone. I accepted the occupied fence corner as the best available evidence.



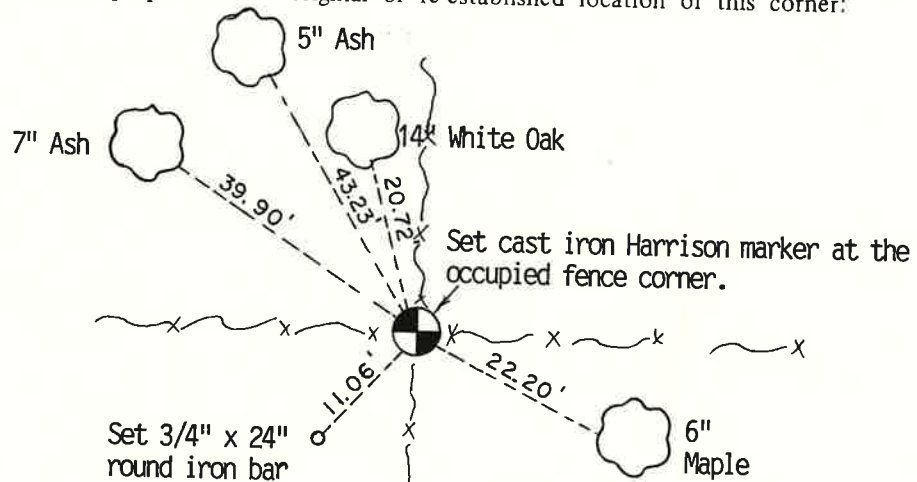
H. A. Sime and Associates  
P. O. Box 705  
Tomah, Wisconsin 54660  
Phone: (608)-372-5392

COUNTY SURVEYOR FORM NO. 1

Description of corner and witness monuments, references and accessories used to perpetuate the original or re-established location of this corner:

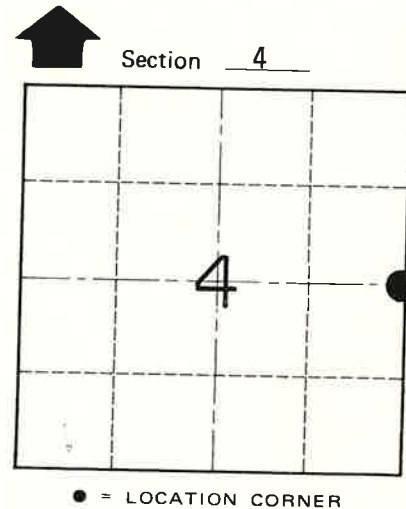
Witnesses to corner location:

"Bud" Thompson  
Brian Forsythe  
John Kenworthy  
Bryan H. Meyer



NOTE: The fences shown are down.

NOTE: The four trees shown hereon are double blazed; the distance to each is to a nail set in a hack in the side of the tree.



T 15 N R 4 W  
WISCONSIN

SURVEY CONTROL ORDER

Horizontal	_____
Vertical	_____

WISCONSIN COORDINATE SYSTEM

Corner	East (X)	North (Y)	Elevation (Z)	Zone
Control Sta. Name				

~~City Village or~~ Town of Portland

County of Monroe