

U.S. PUBLIC LAND SURVEY MONUMENT RECORD

ROMPORTL #21504032000

HISTORY OF CORNER ESTABLISHMENT SINCE THE ORIGINAL GOVERNMENT SURVEY
SEE PREVIOUS TIE SHEET.

DESCRIPTION OF CORNER EVIDENCE FOUND

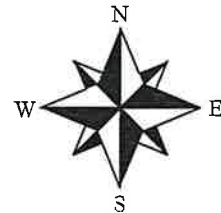
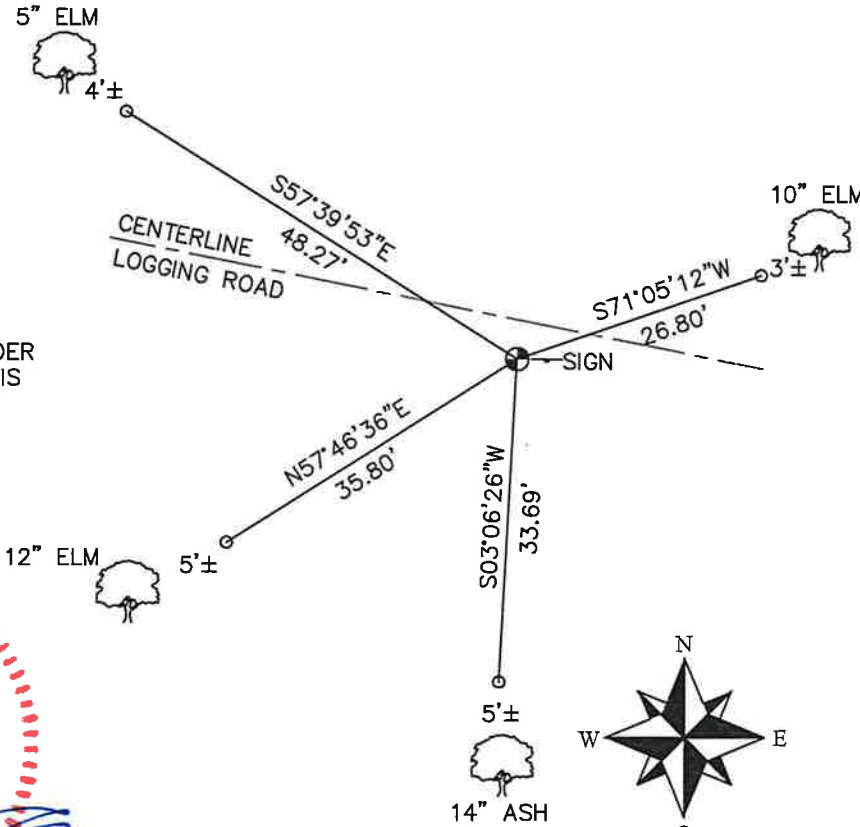
FOUND AND ACCEPTED HARRISON MONUMENT AS SET BY LAWRENCE FEDDERSON. TOOK NEW TIES AS SHOWN BELOW.

CREW/WITNESS FOR CORNER LOCATION
-CHRISTIAN J. RUNNING
-

FIELD WORK COMPLETED 5/11/2023

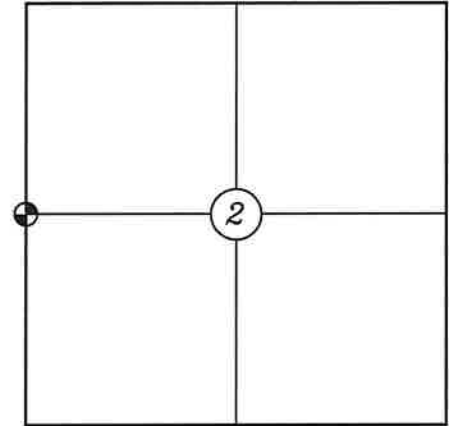
I, CHRISTIAN J. RUNNING RLS 2558, HEREBY CERTIFY THAT THE COORDINATES PROVIDED ON THIS RECORD WERE DETERMINED BY ME OR UNDER MY DIRECT SUPERVISION AND THAT THIS FORM IS CORRECT TO THE BEST OF MY KNOWLEDGE AND BELIEF.

CHRISTIAN J. RUNNING
PLS 2558
RUNNING LAND SURVEYING
700 DAUPHIN ST.
LA CROSSE, WI 54603



NOT TO SCALE

**SECTION 2, T15N, R4W
TOWN OF PORTLAND
MONROE COUNTY
WISCONSIN.**



● CORNER LOCATION

LEGEND

- FOUND HARRISON
- SET 3/4" X 18" IRON BAR 1.5 LB/FT UNLESS NOTED

ALL BEARINGS ARE REFERENCED TO THE MONROE COUNTY COORDINATE SYSTEM NAD 83(2011)

MONROE COUNTY COORDINATES NAD 83(2011)
NORTHING: 328897.7314
EASTING: 620954.0101

I, Lawrence A. Feddersen, do hereby certify that on the twenty-first day of December 1988, I found ~~(evidence)~~ (no evidence) of the West Quarter corner of Section 2, T15 N, R 4W Fourth Principal Meridian, and I re-established said corner according to the Wisconsin Statutes as shown and described hereon.

Dated this 28 day of March 1990.

Lawrence A. Feddersen

Registered Land Surveyor

Title

History of corner establishment since Original Government Survey

Fred Holden set stone where he had found old stake in May of 1911.

Description of corner evidence found:

We did not find the stone set by Holden. Trees have been logged off and trails have been bulldozed in area where stone would have been set. There are many stones, but none looked as if they were set. Due to lack of fences in the area, we set this corner at the prorated distance on a straight line between the SW and NW corners. The stone which was set by Holden a forty East of the $W\frac{1}{4}$ corner was also searched for but nothing was found.

Description of corner and witness monuments, references and accessories used to perpetuate the original or re-established location of this corner:

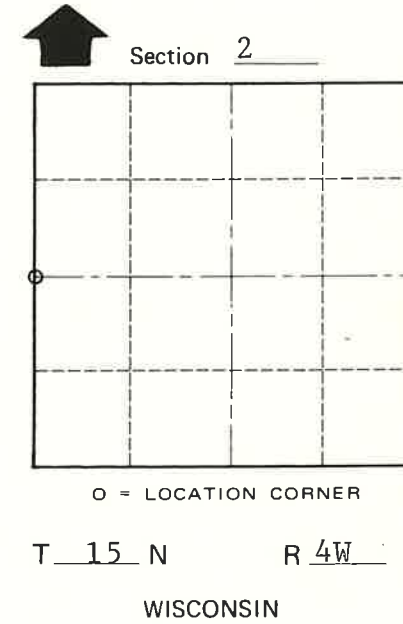
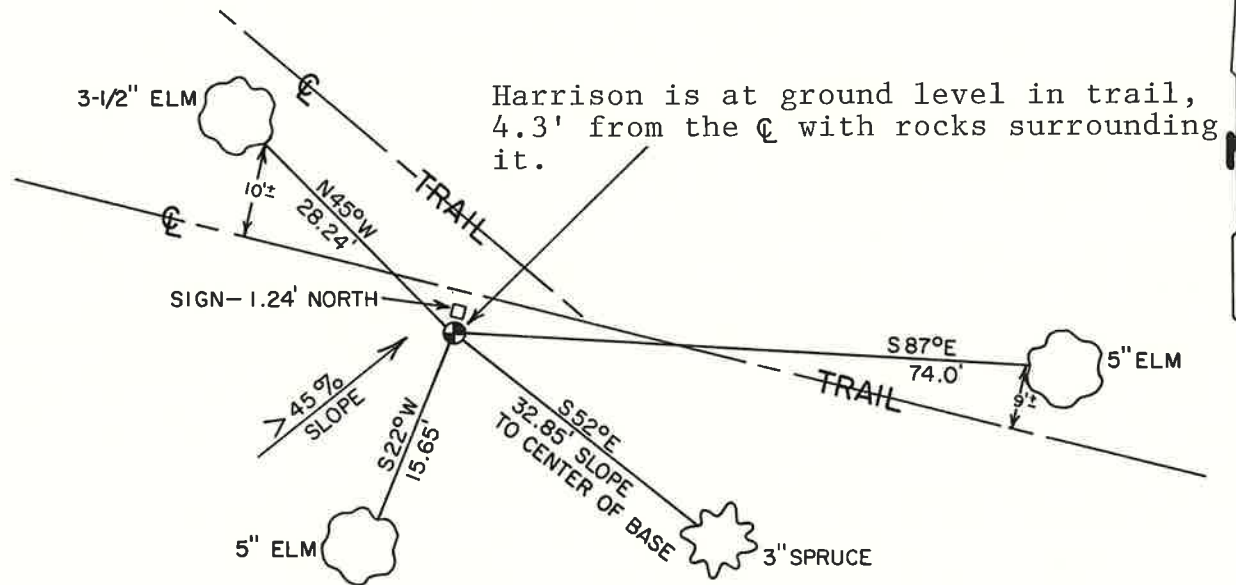
Witnesses to corner location:

Lawrence A. Feddersen

Gary Dechant

Timothy Jeatran

Paul Felber



NOTE: All Elm trees are double blazed with N & W in bottom blaze.

COUNTY SURVEYOR FORM NO. 1

SURVEY CONTROL ORDER

Horizontal	_____
Vertical	_____

WISCONSIN COORDINATE SYSTEM

Corner	East (X)	North (Y)	Elevation (Z)	Zone
Control Sta. Name				

City, Village or Town Portland
 County of Monroe