



T Forest – T Wellington
Billings Creek Bridge B-41-0332
County Z
Monroe County

Wisconsin Department of Transportation
Public Involvement Presentation

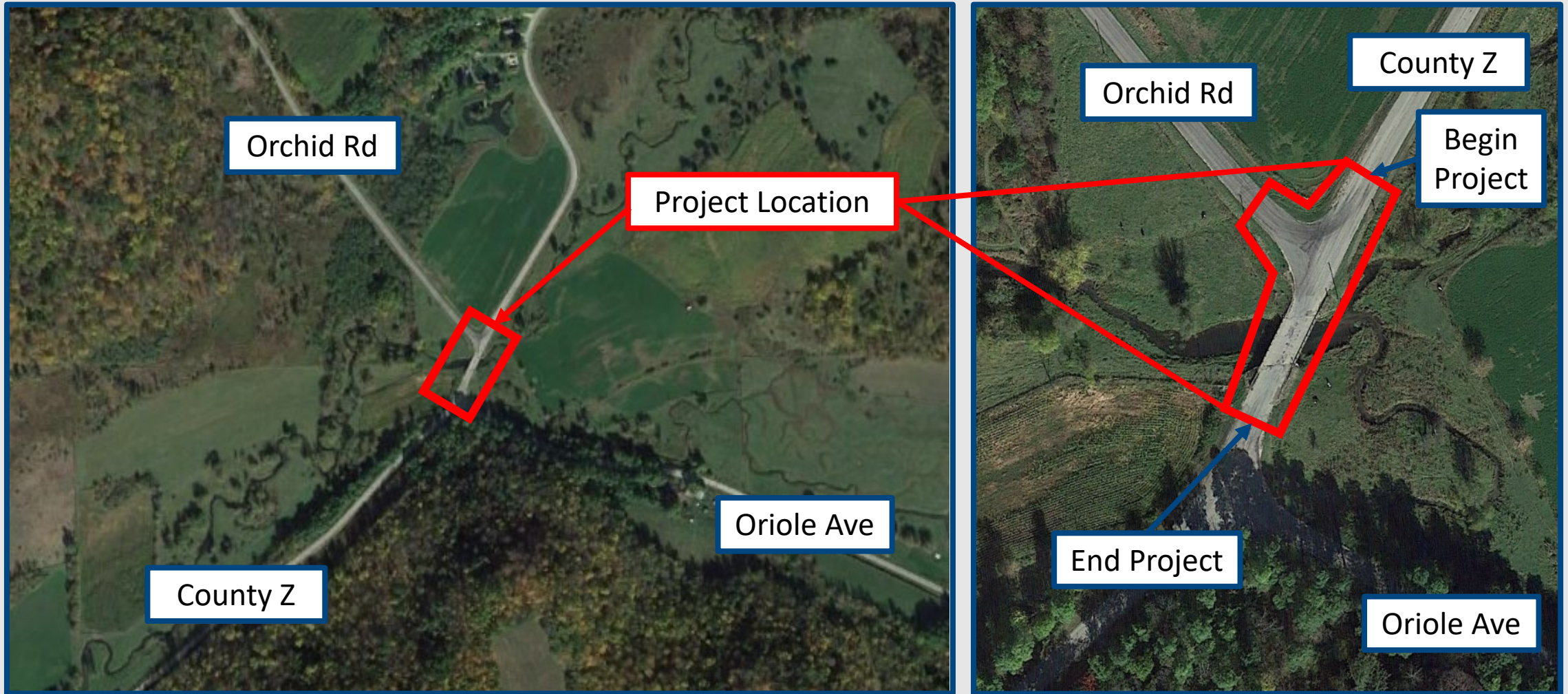
July 31, 2023

Presentation Agenda

- Project Limits
- Traffic Control
- Project Need
- Proposed Design Overview
- Recent Activities
- Upcoming Schedule
- Contact Information



What are the project limits?



What will happen to County Z traffic?

- County Z will be closed to traffic during construction.
- No detour will be posted.



Why do we need this project?

Structurally Deficient Structure



- Single-span prestressed concrete channel structure
- 52.5-feet-long with a clear roadway width of 28.4 feet
- Sufficiency Rating = 43.5
- Built in 1978

Why do we need this project?

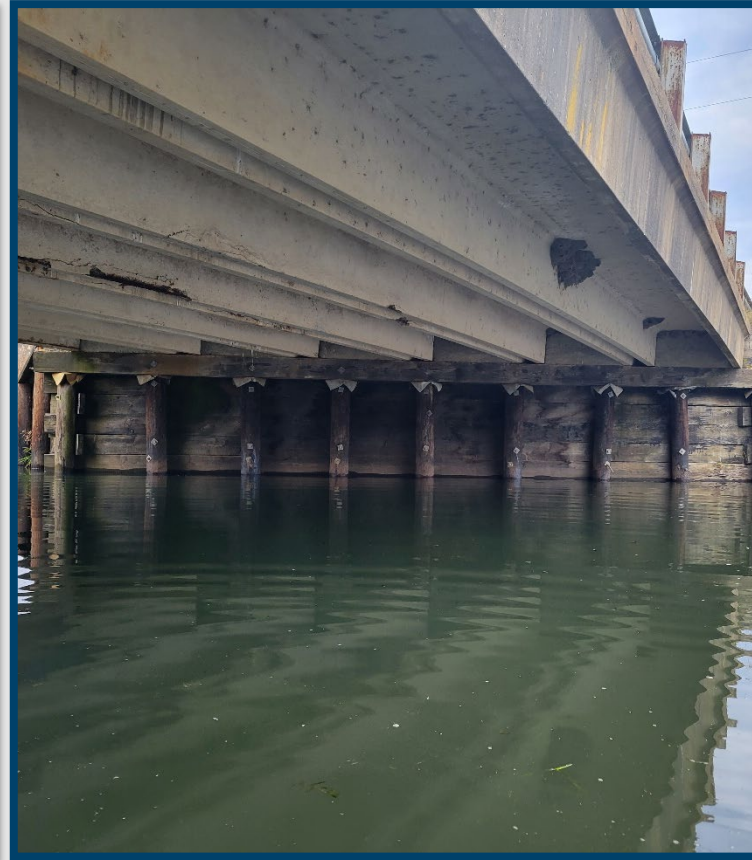
Superstructure Deterioration



- Concrete Channels
 - Delamination
 - Spalling with exposed strands
 - Cracking

Why do we need this project?

Substructure Deterioration



- Timber Abutments
 - Decay
 - Section loss
 - Splitting
 - Deterioration
- Timber Piles
 - Decay
 - Section loss
 - Splitting
- Wingwalls
 - Deterioration

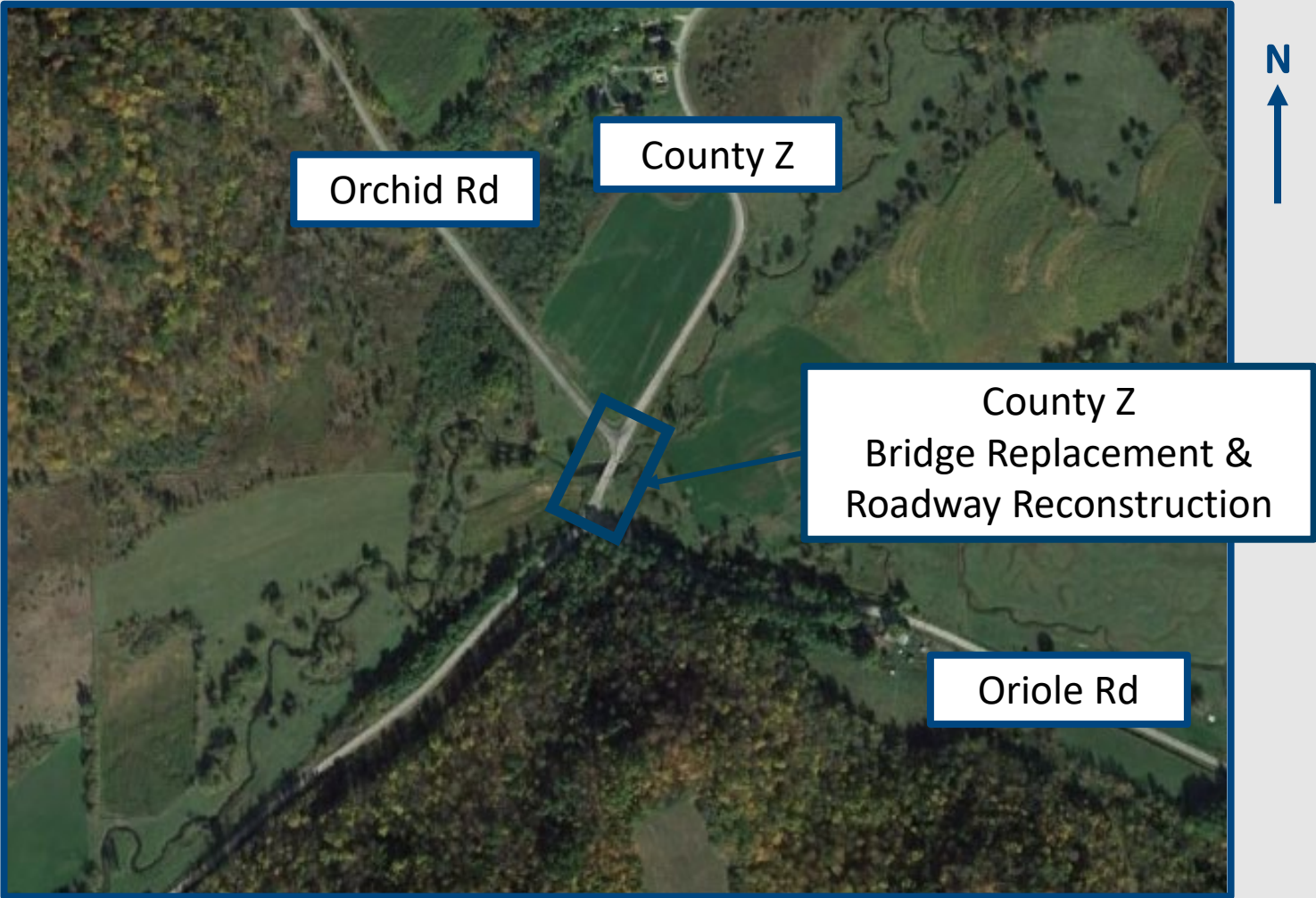
Why do we need this project?

Metal Bridge Rail Deterioration



- Metal Bridge Rail
 - Corrosion
 - Distortion

What improvements are proposed?



Proposed Design Overview

Replace Structure

- Remove existing single-span prestressed concrete channel bridge.
- Construct a new two-span reinforced concrete flat slab bridge.



Proposed Design Overview

Replace Beam Guard

- Remove existing guardrail.
- Install new beam guard in the northeast quadrant of the proposed structure.



Proposed Design Overview

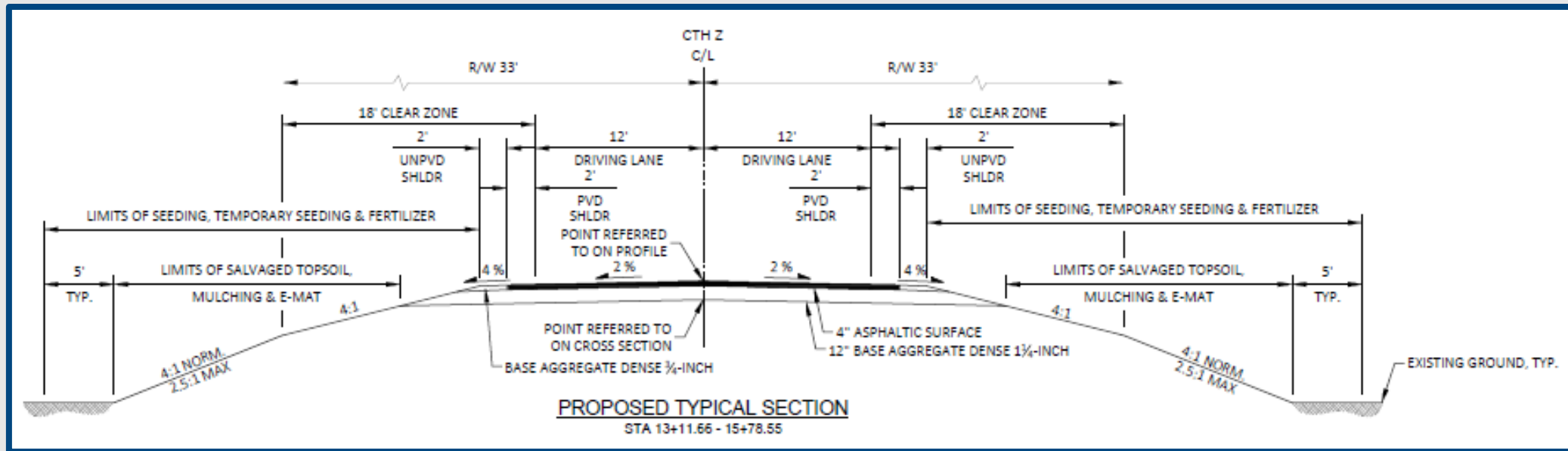
Typical Section – County Z

- Pavement

- Pave 4-inches of asphaltic surface over 12-inches of base aggregate dense

- Shoulders

- 2-foot paved
- 2-foot unpaved



Recent Activity

- Initial Site Survey
- Initial Utility Coordination
- Initial Department of Natural Resources Coordination
- Cultural Resources Coordination
- Preliminary Roadway and Structure Plans



What is next?

- Environmental Report
December 2023
- Design Study Report
March 2024
- R/W Plat
September 2024
- Final (90%) Plans
February 2026
- PS&E
August 1, 2026
- Let Date
November 10, 2026
- Construction
Spring 2027



Project Contact Information

David Ohnstad

Monroe County Highway Commissioner

David.Ohnstad@co.monroe.wi.us

(608) 269-8740

Aaron Palmer, P.E.

Consultant Project Manager

Westbrook Associated Engineers, Inc.

apalmer@westbrookeng.com

P.O. Box 429

Spring Green, WI 53588

(608) 588-7866



Thank you for your time.

If you have any comments, questions, or concerns, please send Aaron Palmer, P.E. with Westbrook Associated Engineers, Inc. an email, give him a call, or return the comment form in the mail.

