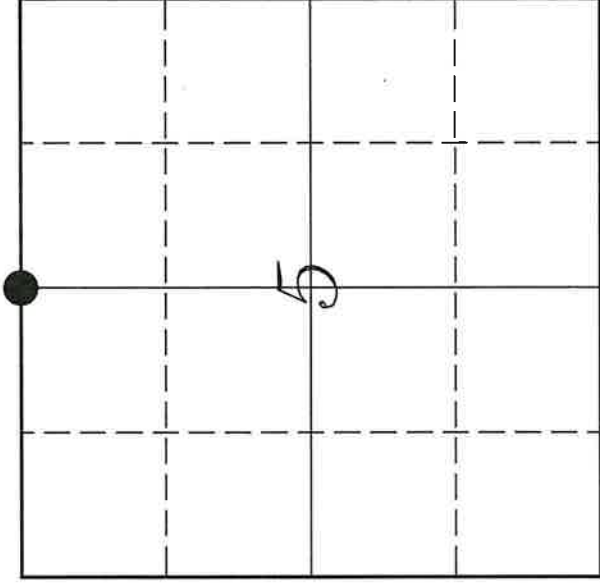


U. S. PUBLIC LAND SURVEY MONUMENT RECORD

SECTION 5, T14N, R3W, TOWN OF CLINTON  
VERNON COUNTY, WISCONSIN



VERNON COUNTY COORDINATE SYSTEM	
Northing	210828.860
Easting	736030.671
MONROE COUNTY COORDINATE SYSTEM	
Northing	299972.177
Easting	639578.694
Datum	NAD 1983 (2011)
TYPE OF LANDMARK:	
	Set 1 1/4" x 18" Iron Rod
BEARINGS ARE REFERENCED TO:	
	Vernon County Coordinates (Survey Grade)

LOCATION OF LANDMARK

Witnesses: Laurence E Johns III  
Monique Hassman

Adjust Bearings +00°05'54"  
To Convert to Monroe County

Date: 15 November 2022

Describe or show any material discrepancy between the location of the restored corner and that of the corner previously restored or re-established.

Uriah Biggs established this corner in October 1845.

Fred Holden was at this corner, in May 1901. He does not show a monument at this corner.

William Jung was at this corner, December 1981. He shows he set a PK Nail at this location, due to frost not allowing a Harrison to be set. He noted a Harrison to be set later. He prepared a tie sheet.

Laurence Johns was at this corner, in June 2012. I show I found a Harrison Monument.

Describe any record evidence, monument evidence, testimonial evidence or any other material evidence you considered and whether the monument was found or restored through acceptance of an obliterated evidence location.

In 2021, I was informed by Monroe County that Ogden Avenue was going to be rebuilt. I said I would measure all affected corners and replace them when work was completed.

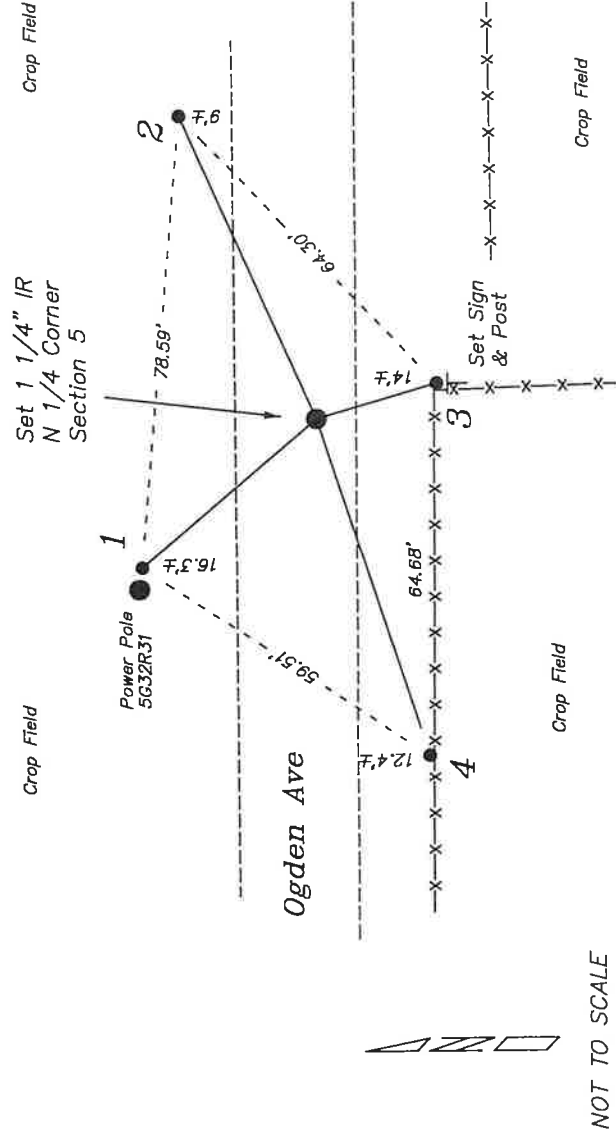
No bearing trees of record were located. I also did not find any of Jung's ties.

I found a PK nail in the surface of the roadway. I did not detect a signal strong enough for a Harrison monument to be still located below the surface. It did fit with measurements to other corners, I decided it was placed where the Harrison used to be.

Once asphalt was placed on the roadway one year after initial road work, I placed an 1 1/4" iron rod at the location of the previously measured PK Nail.

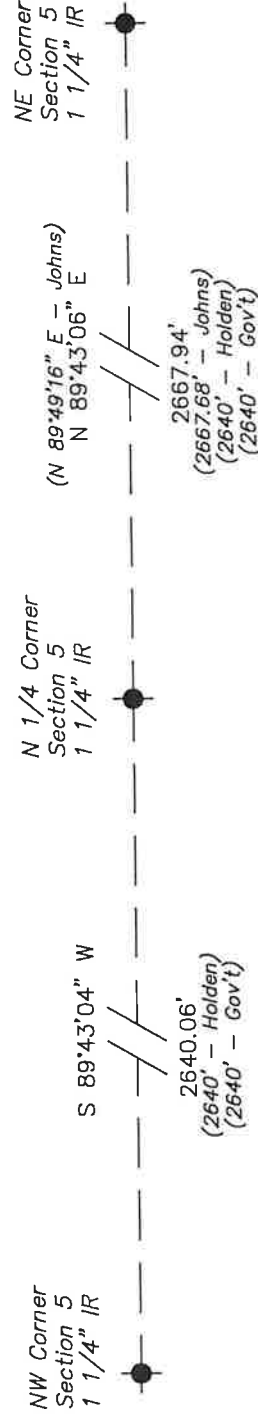
# RECORD OF DURABLE WITNESS MONUMENTS

NO	DESCRIPTION	BEARING	DISTANCE
1	Set 3/4" x 18" Iron Rod 1' East of Power Pole 5G32R31	N 40°12'31" W	39.83'
2	Set 3/4" x 18" Iron Rod At Field Edge	N 65°53'43" E	57.60'
3	Set 3/4" x 18" Iron Rod 1' East of Fence Post	S 16°17'02" E	21.79'
4	Set 3/4" x 18" Iron Rod In Fence Line	S 71°49'59" W	61.62'



## PLAN VIEW DRAWING OF REFERENCE TIES

Map Showing Distance And Direction To Other Public Land Survey  
Corners Used For Re-Establishing The Corner



I, Laurence E. Johns III, PLS 2804, Professional Land Surveyor, hereby certify that the corner location shown on this record was determined by me or under my direction and control, and that this U.S. Public Land Survey Monument Record is correct and complete to the best of my knowledge and belief.

I, William C. Jung, do hereby certify that on the 22nd day of December 1981, I found ~~(evidence)~~ (no evidence) of the South 1/4 corner of Section 32, T15 N, R 3 W, Fourth Principal Meridian, and I re-established said corner according to the Wisconsin Statutes as shown and described hereon.

Dated this 28th day of Dec. 1981.

William C. Jung

Registered Land Surveyor 1323

*William C. Jung*

History of corner establishment since Original Government Survey

Fred Holden shows this corner to be in during his survey of 1901.

Description of corner evidence found: Set the corner on line between the SW and SE section corners and at a distance of 2640 feet from the SW section corner. I found a North-South fence 1320 feet East of the SW section corner. Holden show this corner to be 2640 feet East of the SW section corner. He shows a stone at the SW section corner. I measured from a Harrison which is at Holden's stone's position.

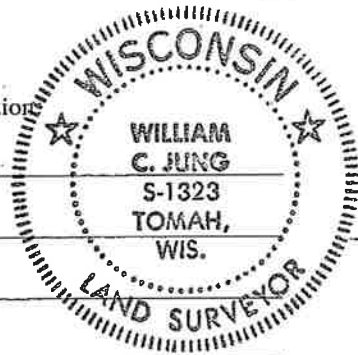
Description of corner and witness monuments, references and accessories used to perpetuate the original or re-established location of this corner:

Witnesses to corner location

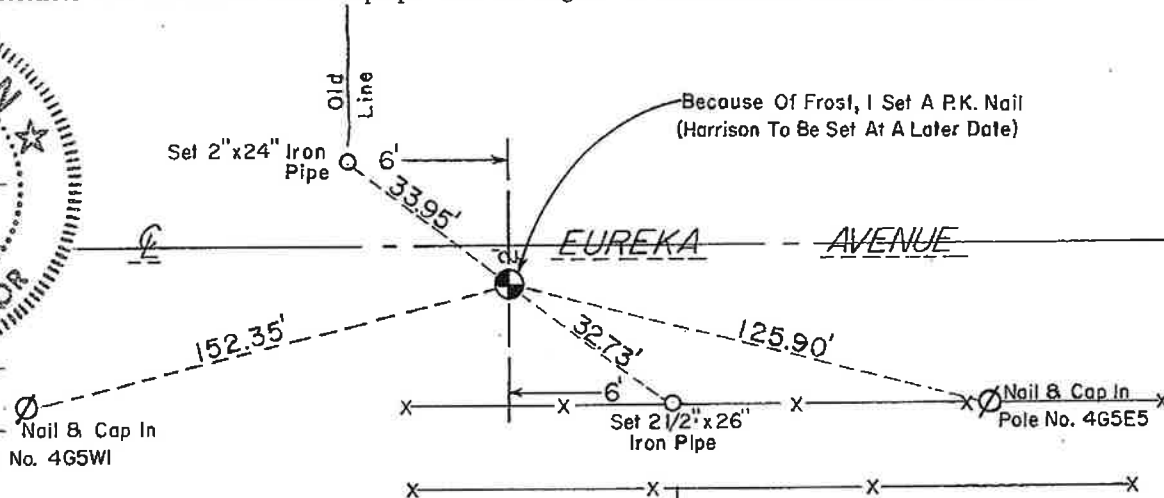
Jung

Dechant

Meyer

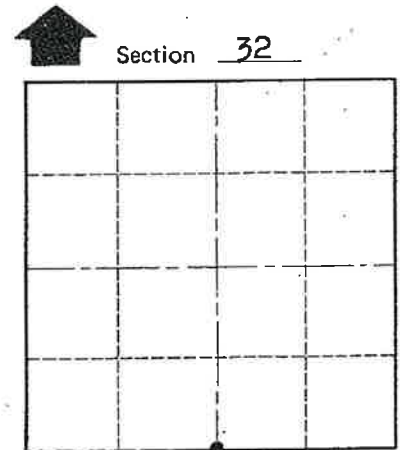


Nail & Cap In Pole No. 4G5W1



Because Of Frost, I Set A P.K. Nail (Harrison To Be Set At A Later Date)

Nail & Cap In Pole No. 4G5E5



O = LOCATION CORNER

T 15 N R 3 W

WISCONSIN

Approved: HARLEY A. SIME  
MONROE CO. SURVEYOR

Replaced P.K. with Harrison on 7/25/04. by Wilhite

Comments

SURVEY CONTROL ORDER

Horizontal	_____
Vertical	_____

WISCONSIN COORDINATE SYSTEM

Corner	East (X)	North (Y)	Elevation (Z)	Zone
Control Sta. Name				

~~City/Village~~ Town Jefferson  
County of Monroe  
Wisconsin

COUNTY SURVEYOR FORM NO. 1