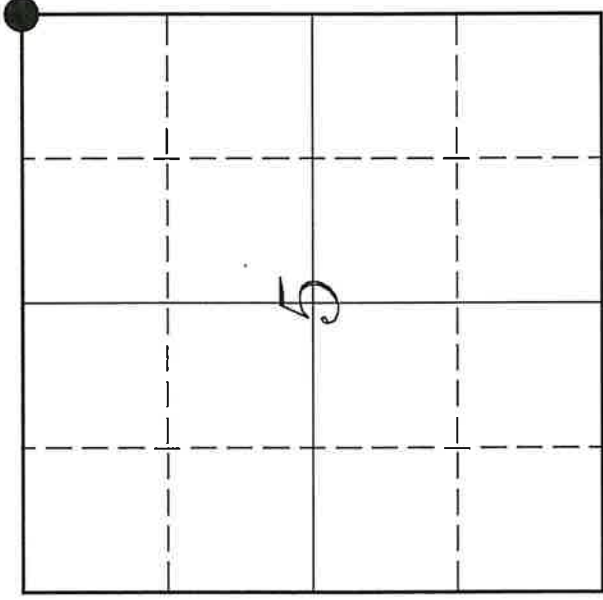


U. S. PUBLIC LAND SURVEY MONUMENT RECORD

SECTION 5, T14N, R3W, TOWN OF CLINTON

VERNON COUNTY, WISCONSIN



VERNON COUNTY COORDINATE SYSTEM	
Northing	210841.969
Easting	738698.574
MONROE COUNTY COORDINATE SYSTEM	
Northing	299980.711
Easting	642246.644
Datum	NAD 1983 (2011)
TYPE OF LANDMARK:	
	Set 1 1/4" x 18" Iron Rod
BEARINGS ARE REFERENCED TO:	
	Vernon County Coordinates (Survey Grade)

LOCATION OF LANDMARK

Witnesses: Laurence E Johns III
Monique Hassman

Date: 15 November 2022

Adjust Bearings +00°05'54"
To Convert to Monroe County

Describe or show any material discrepancy between the location of the restored corner and that of the corner previously restored or re-established.

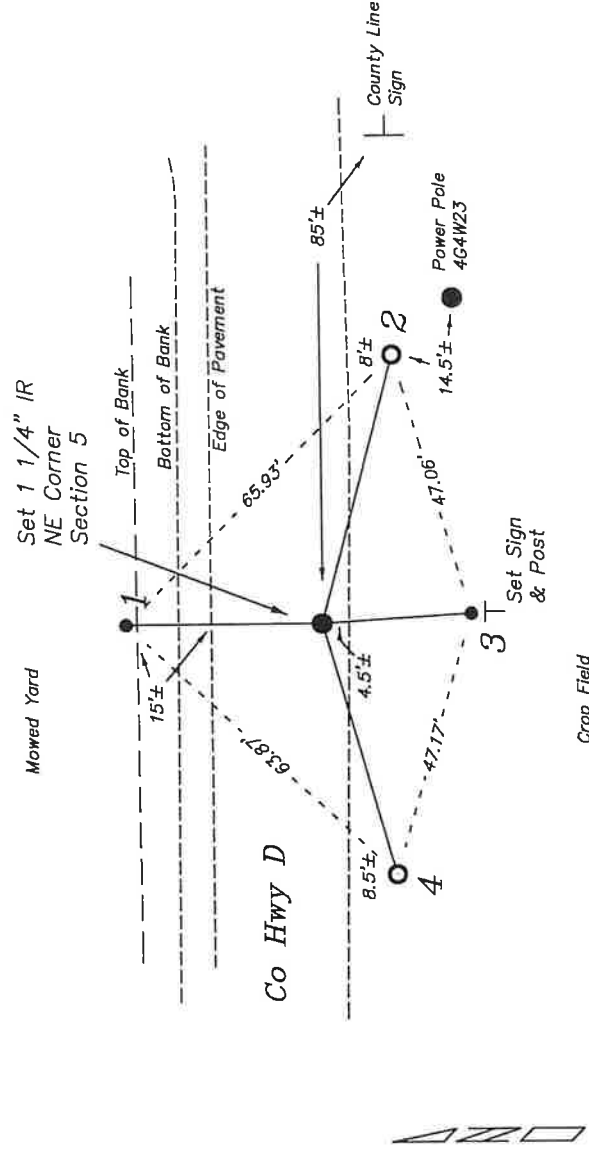
Uriah Biggs established this corner in October 1845.
 Wm Knower was at this corner, in January 1884. He shows he found the government corner.
 Fred Holden was at this corner, in May 1901. He shows he set a stake.
 William Jung was at this corner, in December 1981. He shows a Harrison monument to be set.
 Bryan Meyer was at this corner, in September 1993. He shows he set a 1 1/4" iron rod and prepared a tie sheet.
 Laurence Johns was at this corner, in June 2012. I show I found a 1 1/4" iron rod.

Describe any record evidence, monument evidence, testimonial evidence or any other material evidence you considered and whether the monument was found or restored through acceptance of an obliterated evidence location.

No bearing trees of record were located. I did find two of Meyer's ties, the two iron pipes.
 No monument was found in the roadway. I expect road maintenance destroyed the corner.
 I placed an 1 1/4" iron rod at the location determined by the two existing ties.

RECORD OF DURABLE WITNESS MONUMENTS

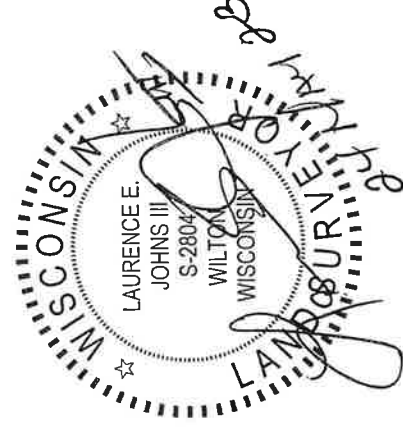
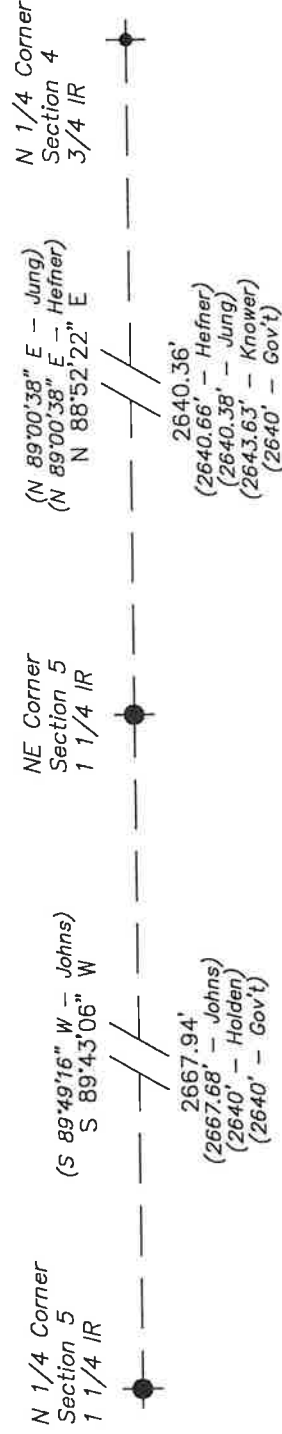
NO	DESCRIPTION	BEARING	DISTANCE
1	Set 3/4" x 18" Iron Rod In Mowed Grass (Top of Bank)	N 00°00'59" W	34.01'
2	Existing 1" Iron Pipe From Meyer Tie Sheet	S 74°56'46" E	(48.66') 48.33'
3	Set 3/4" x 18" Iron Rod North Side of Warning Sign	S 03°27'14" E	26.04'
4	Existing 1" Iron Pipe From Meyer Tie Sheet	S 73°53'20" W	(45.12') 45.45'



NOT TO SCALE

PLAN VIEW DRAWING OF REFERENCE TIES

Map Showing Distance And Direction To Other Public Land Survey
Corners Used For Re-Establishing The Corner



I, Laurence E. Johns III, PLS 2804, Professional Land Surveyor, hereby certify that the corner location shown on this record was determined by me or under my direction and control, and that this U.S. Public Land Survey Monument Record is correct and complete to the best of my knowledge and belief.

I, William C. Jung, do hereby certify that on the 21st day of December, 1981, I found (evidence) (no evidence) of the Southwest corner of Section 33, T 15 N, R 3 W Fourth Principal Meridian, and I re-established said corner according to the Wisconsin Statutes as shown and described hereon.

Dated this 28th day of Dec., 1981.

William C. Jung

Registered Land Surveyor 1323
Title

William C. Jung

Description of corner and witness monuments, references and accessories used to perpetuate the original or re-established location of this corner:

1993 Crew: Meyer; Lobe
Date: September 20, 1993
Weather: Heavy Rain 55°±
Witnesses to corner location:

Jung

Dechant

Meyer

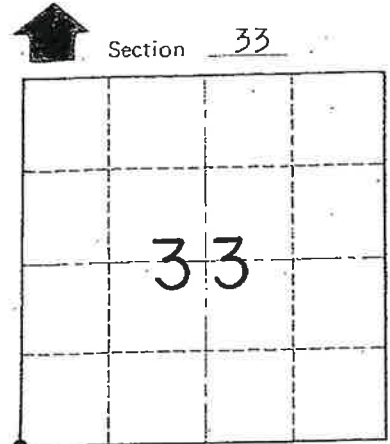
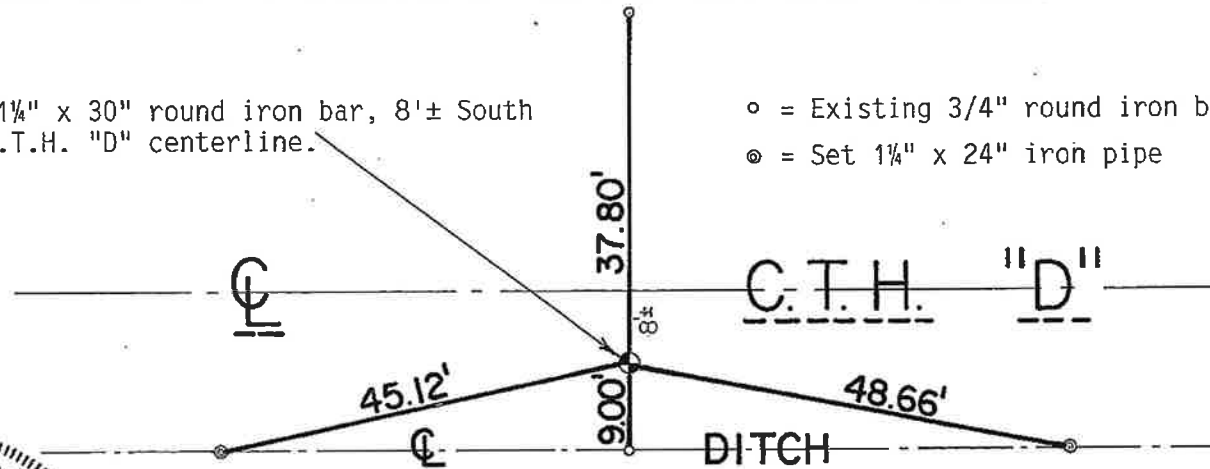
History of corner establishment since Original Government Survey
Fred Holden was at this corner in May of 1901.

Description of corner evidence found: Set the corner on line with a bearing between the W/16SW and NW corners and at a distance from the W/16SW corner equal to 1/3 of the distance between the W/16SW and NW corners. The distance East to the South 1/8 corner almost fits the original distance exactly as does the exiting 1/8 fence in between as it goes North into Monroe County. I did not use single proportionate measurement along the Town (County) line, because in my opinion the line is not straight, nor ever was, but instead has kinks in it.

UPDATE: The County Surveyor's Office was contacted by Norb Smith, Monroe County Highway Commissioner, and notified that a resurfacing project was to take place in the summer of 1993 on C.T.H. "D". Prior to construction, previous ties were checked and new ties taken. The Harrison was then removed. Following the resurfacing project, a 1 1/4" x 30" round iron bar was set at the corner location.

Set 1 1/4" x 30" round iron bar, 8'± South of C.T.H. "D" centerline.

○ = Existing 3/4" round iron bar
⊙ = Set 1 1/4" x 24" iron pipe



T 15 N R 3 W
WISCONSIN



SURVEY CONTROL ORDER

Horizontal		WISCONSIN COORDINATE SYSTEM		
Corner	East (X)	North (Y)	Elevation (Z)	Zone
Control Sta. Name				

~~City/Village~~ Town Jefferson
County of Monroe
Wisconsin

COUNTY SURVEYOR FORM NO. 1