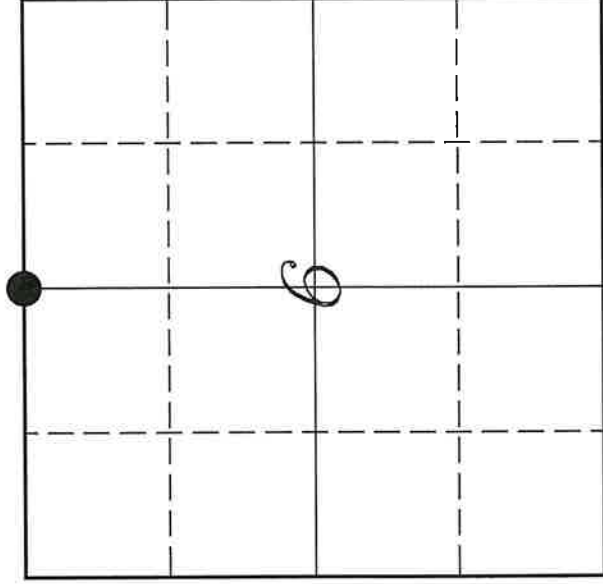


U. S. PUBLIC LAND SURVEY MONUMENT RECORD

SECTION 6, T14N, R3W, TOWN OF CLINTON
VERNON COUNTY, WISCONSIN



VERNON COUNTY COORDINATE SYSTEM	
Northing	210802.400
Easting	730747.588
MONROE COUNTY COORDINATE SYSTEM	
Northing	299954.784
Easting	664295.517
Datum	NAD 1983 (2011)
TYPE OF LANDMARK:	
	Set Lunde Monument 4" Brass Capped Iron Pipe
BEARINGS ARE REFERENCED TO:	
	Vernon County Coordinates (Survey Grade)

LOCATION OF LANDMARK

Witnesses: Lawrence E Johns III
Monique Hassman

Date: 8 November 2022

Adjust Bearings +00°05'54"
To Convert to Monroe County

Describe or show any material discrepancy between the location of the restored corner and that of the corner previously restored or re-established.

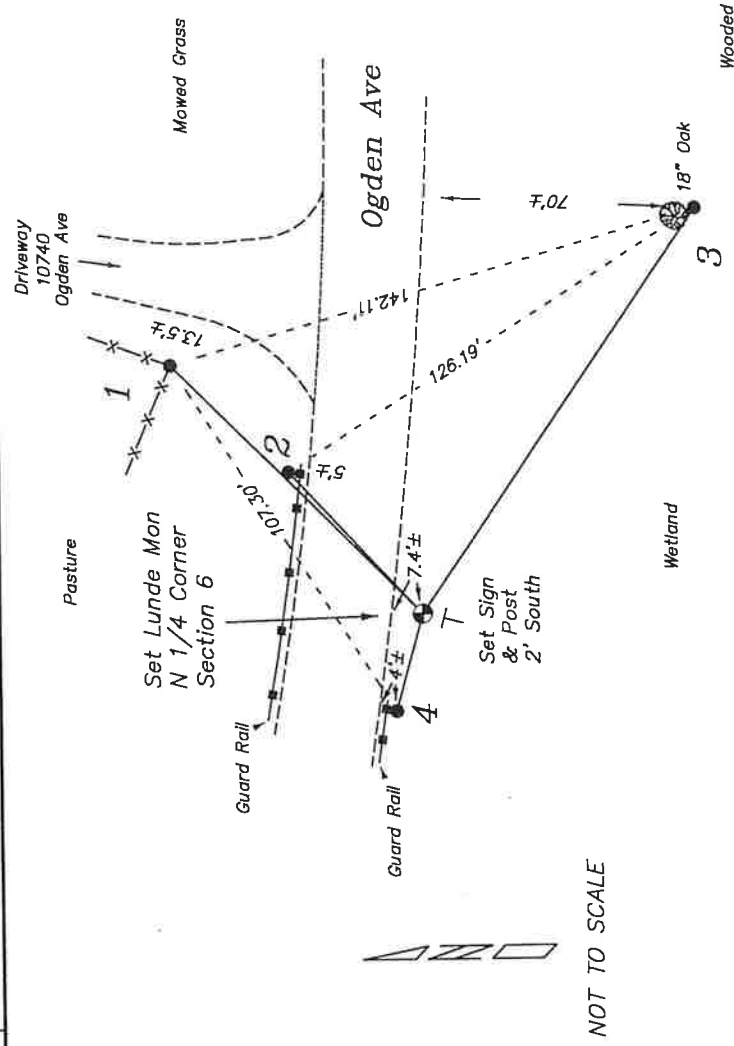
Uriah Biggs established this corner in October 1845.
 Gary Sime was at this corner, in September 1981.
 F Curtis Crook was at this corner, in December 1994. He shows he found a Harrison monument.
 Gary Dechant was at this corner, in April 2003. He shows he set a 1 1/2" iron rod by proportionate location. He prepared a tie sheet
 Garold Sime was at this corner, in October 2004. He shows he found a 1 1/4" iron rod.
 Jonathan Schmitz was at this corner, in February 2021. He shows he found a Harrison monument.

Describe any record evidence, monument evidence, testimonial evidence or any other material evidence you considered and whether the monument was found or restored through acceptance of an obliterated evidence location.

In 2021, I was informed by Monroe County that Ogden Avenue was going to be rebuilt. I said I would measure all affected corners and replace them when work was completed.
 No bearing trees of record were located.
 Dechant's tie sheet states that Gary Sime set a Harrison at this corner in 1981, based on a prorated location. Dechant mentions that he could not find the Harrison and placed a 1 1/2" iron rod using the same method as Sime.
 I found no trace of the 1 1/2" iron rod or warning sign set by Dechant. I did not locate any of his ties as well.
 I placed at the location based on surveys tied to this corner. This location matches well with other corners.
 I placed a Lunde monument in the shoulder of the roadway.

RECORD OF DURABLE WITNESS MONUMENTS

NO	DESCRIPTION	BEARING	DISTANCE
1	Set 3/4" x 18" Iron Rod 1', East of Fence Corner Post	N 45°24'05" E	91.81'
2	Set 3/4" x 18" Iron Rod North Side of End of Guard Rail	N 47°17'18" E	50.72'
3	Set 3/4" x 18" Iron Rod 1' South of 18" Oak (Top of Bank)	S 55°37'09" E	127.43'
4	Set 3/4" x 18" Iron Rod South Side of End of Guard Rail	N 74°33'52" W	26.16'

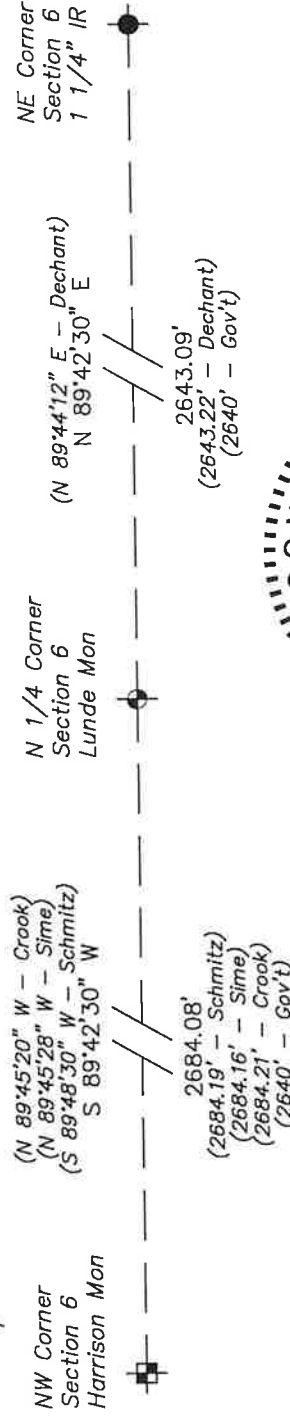


PLAN VIEW DRAWING OF REFERENCE TIES

Map Showing Distance And Direction To Other Public Land Survey
Corners Used For Re-Establishing The Corner

Note:
Measurements were not made to
this corner at this time.

Bearings and distances shown are
based on recorded information and
shown for reference.



I, Laurence E. Johns III PLS 2804, Professional Land Surveyor, hereby certify that the corner location shown on this record was determined by me or under my direction and control, and that this U.S. Public Land Survey Monument Record is correct and complete to the best of my knowledge and belief.

CERTIFICATE

CERTIFIED LAND CORNER

21503310020

No. 132

Page 2

I, Gary L. Dechant, do hereby certify that on the 31st day of March 2003, I found (evidence) (no evidence) of the SA corner of Section 31, T 15 N, R 3 W Fourth Principal Meridian, and I re-established said corner according to the Wisconsin Statutes as shown and described hereon.

Dated this 7th day of April 2003

Gary L. Dechant

Registered Land Surveyor 1744

Title

History of corner establishment since Original Government Survey

In 1981 G. Sime set this corner by single proportionate measurement and on line between section corners, and references taken.

Description of corner evidence found:

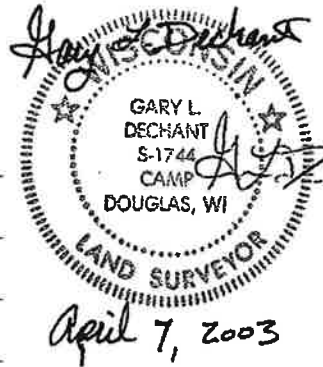
Recent Town Road construction destroyed Sime's corner and all of his references to the corner. We reset the corner in the same manner as G. Sime did, by single proportionate measurement on line between section corners.

Description of corner and witness monuments, references and accessories used to perpetuate the original or re-established location of this corner:

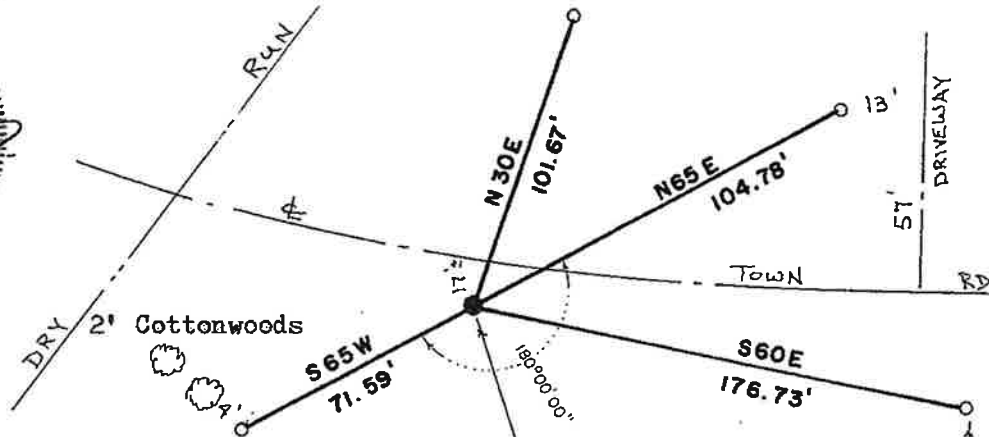
Witnesses to corner location:

Zachariah P. Dechant

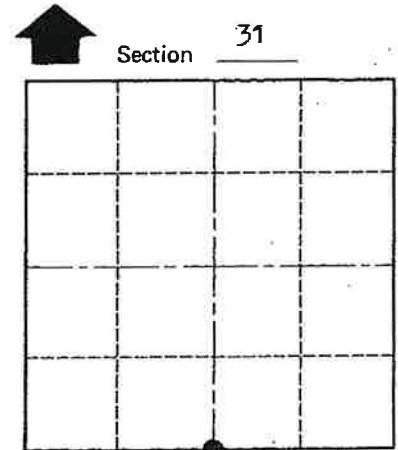
Gary L. Dechant



April 7, 2003



Reset corner with 1 1/2" x 30" round iron bar, drove thru riprap Set survey sign 3' NW of corner next to guard rail.



O = LOCATION CORNER

T 15 N R 3 W

WISCONSIN

12' SE of guy wire anchor

SURVEY CONTROL ORDER

Horizontal

Vertical

WISCONSIN COORDINATE SYSTEM

Corner	East (X)	North (Y)	Elevation (Z)	Zone
Control Sta. Name				

o = Set 1" O.D. x 24" iron pipe

City, Village or Town Jefferson

County of Monroe

COUNTY SURVEYOR FORM NO. 1