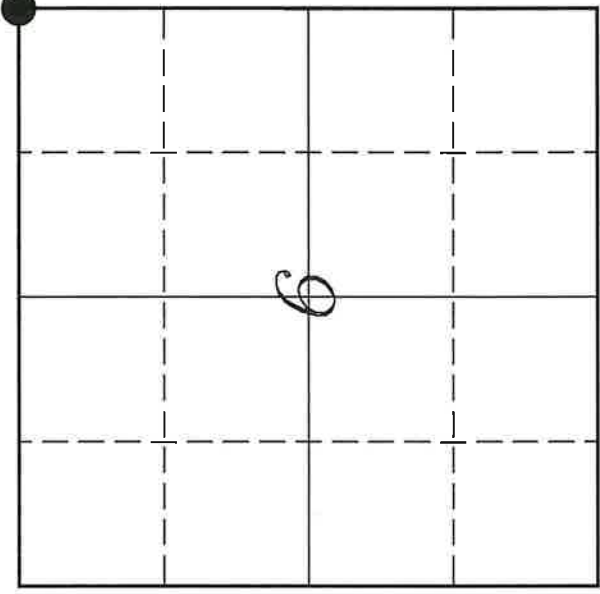


U. S. PUBLIC LAND SURVEY MONUMENT RECORD

SECTION 6, T14N, R3W, TOWN OF CLINTON

VERNON COUNTY, WISCONSIN



VERNON COUNTY COORDINATE SYSTEM	
Northing	210815.856
Easting	733390.641
MONROE COUNTY COORDINATE SYSTEM	
Northing	299963.703
Easting	636938.618
Datum	NAD 1983 (2011)
TYPE OF LANDMARK:	
	Set 1 1/4" x 18" Iron Rod
BEARINGS ARE REFERENCED TO:	
	Vernon County Coordinates (Survey Grade)

LOCATION OF LANDMARK

Witnesses: Laurence E Johns III
Monique Hassman

Date: 15 November 2022

Adjust Bearings +00°05'54"
To Convert to Monroe County

Describe or show any material discrepancy between the location of the restored corner and that of the corner previously restored or re-established.

Uriah Biggs established this corner in October 1845.

Fred Holden was at this corner, in May 1901. He shows a stone at this corner.

Garold Sime was at this corner, in September 1981. He shows he replaced a stone with a Harrison Monument. He prepared a tie sheet.

Describe any record evidence, monument evidence, testimonial evidence or any other material evidence you considered and whether the monument was found or restored through acceptance of an obliterated evidence location.

In 2021, I was informed by Monroe County that Ogden Avenue was going to be rebuilt. I said I would measure all affected corners and replace them when work was completed.

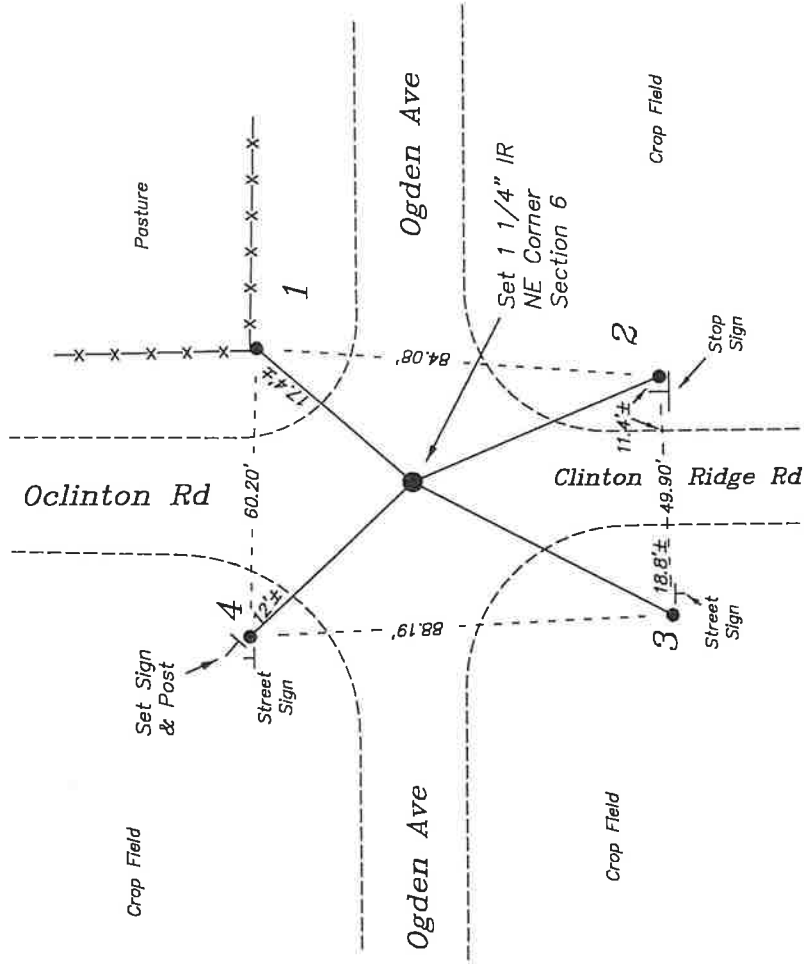
No bearing trees of record were located. I also did not find any of Sime's ties.

I found a railroad spike at this location. It fit with measurements to other corners, I decided it was placed where the Harrison used to be.

Once asphalt was placed on the roadway one year after initial road work, I placed an 1 1/4" iron rod at the location of the previously measured railroad spike.

RECORD OF DURABLE WITNESS MONUMENTS

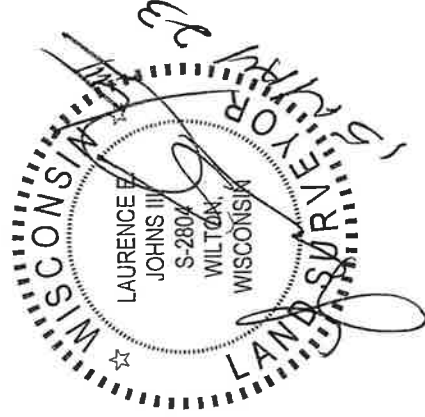
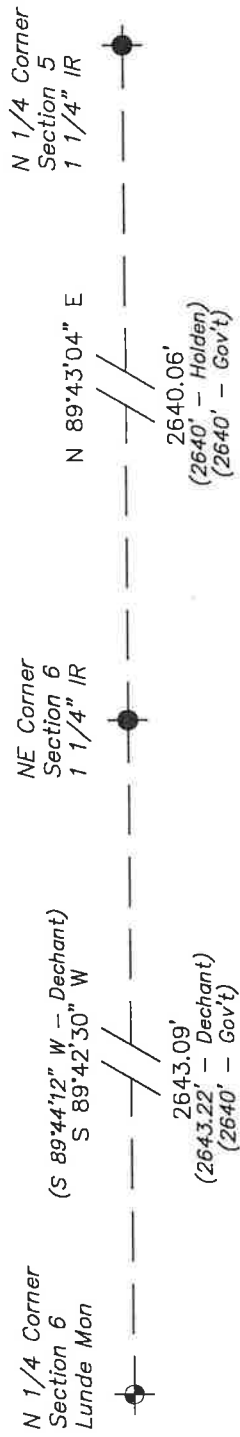
NO	DESCRIPTION	BEARING	DISTANCE
1	Set 3/4" x 18" Iron Rod South Side of Fence Post	N 41°01'06" E	42.78'
2	Set 3/4" x 18" Iron Rod 1, East of Stop Sign	S 22°52'53" E	55.97'
3	Set 3/4" x 18" Iron Rod 1, West of Street Name Sign	S 27°28'42" W	60.86'
4	Set 3/4" x 18" Iron Rod 1, East of Street Name Sign	N 43°15'15" W	46.83'



NOT TO SCALE

PLAN VIEW DRAWING OF REFERENCE TIES

Map Showing Distance And Direction To Other Public Land Survey
Corners Used For Re-Establishing The Corner



I, Laurence E. Johns III, PLS 2804, Professional Land Surveyor, hereby certify that the corner location shown on this record was determined by me or under my direction and control, and that this U.S. Public Land Survey Monument Record is correct and complete to the best of my knowledge and belief.

CERTIFICATE

CERTIFIED LAND CORNER

21503310000

No. 131

I, Garold A. Sime, do hereby certify that on the 10th day of June 1981, I found (evidence) ~~(no evidence)~~ of the SE corner of Section 31, T 15N, R 3W Fourth Principal Meridian, and I re-established said corner according to the Wisconsin Statutes as shown and described hereon.

History of corner establishment since Original Government Survey

Fred Holden shows a stone here in May of 1901.

Description of corner evidence found:

Found Holden's stone and replaced it with a Harrison monument.

Dated this 21st day of Sept. 1981.

Garold A. Sime, R.L.S. 1261

County Surveyor's Office

Title

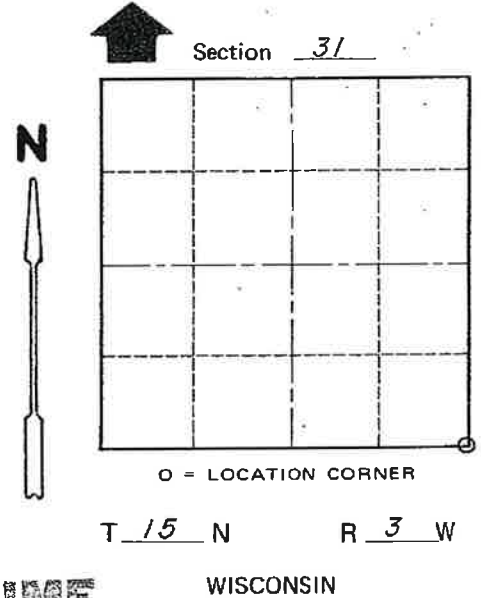
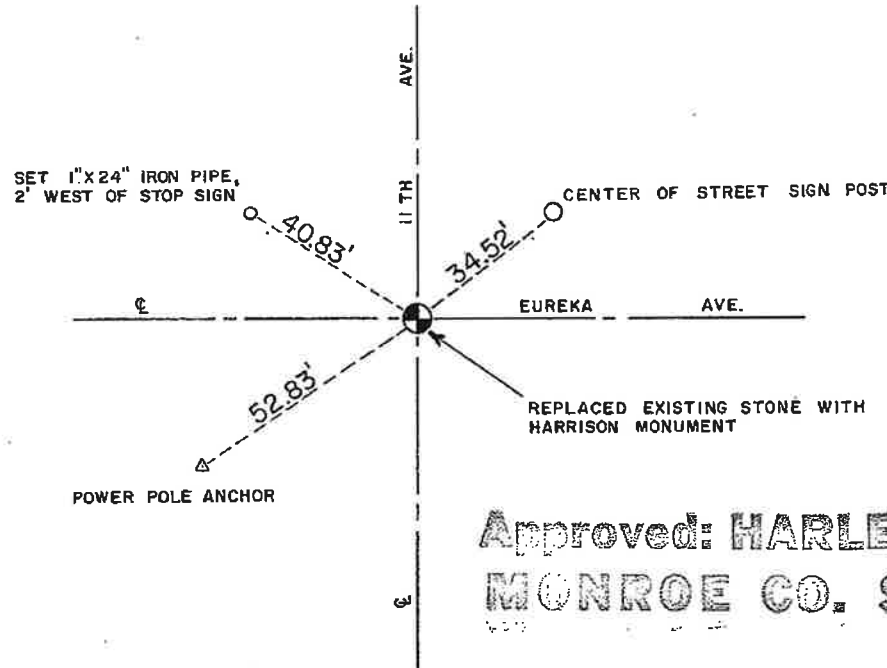
Garold A. Sime

Description of corner and witness monuments, references and accessories used to perpetuate the original or re-established location of this corner:

Witnesses to corner location:

G. Sime

C. Pietz



Approved: **HARLEY A. SIME**
MONROE CO. SURVEYOR

SURVEY CONTROL ORDER

Horizontal _____
Vertical _____

WISCONSIN COORDINATE SYSTEM

Corner	East (X)	North (Y)	Elevation (Z)	Zone
Control Sta. Name				

~~City/Village~~ Town Jefferson
County of Monroe

COUNTY SURVEYOR FORM NO. 1