

**U.S. PUBLIC LAND CORNER  
MAINTENANCE**

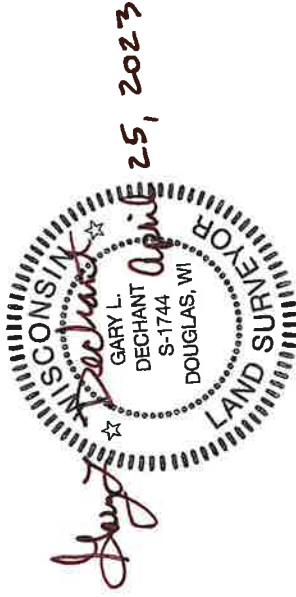
# 62

**Corner ID:** S1/4 Sec. 13, T19N-R5W  
**21905130020**

<u>DATE</u>	<u>CREW</u>	<u>MONUMENT INFO</u>
April 21, 2023	Zachariah P. Dechant Gary L. Dechant	Found Harrison at remnants of fence corner, Set sign 1' north.

- |   | <u>Bearing</u> | <u>Distance</u> |
|---|----------------|-----------------|
| 1) Existing 1 1/4" round iron bar SW side of triangular stone (1976 tie)  | N54E           | 26.05'          |
| 2) Set 5/8"x24" round rebar, 4' west of 12" Black Oak, 10' south of fence | S70E           | 27.15'          |
| 3) Set 5/8"x24" round rebar, west side of stone                           | S2W            | 13.09'          |
| 4) Existing 3/4" round iron bar, between 2 oblong stones (1976 tie)       | N44W           | 19.55'          |

Compass bearings  
Trees double blazed



21905130020

I, Harley A. Sime, do hereby certify that on the 8 day of April 1976, I found (evidence) ~~#####~~ of the S 1/4 corner of Section 13, T 19 N, R 5 W Fourth Principal Meridian, and I re-established said corner according to the Wisconsin Statutes as shown and described hereon.  
 Dated this 7<sup>TH</sup> day of Feb. 1978.

History of original corner establishment:

Description of corner evidence found:

Accepted existing fence lines for corner.

Approved: **HARLEY A. SIME**

County Surveyor **MONROE CO. SURVEYOR**  
Title

See Reverse Side For Maintenance

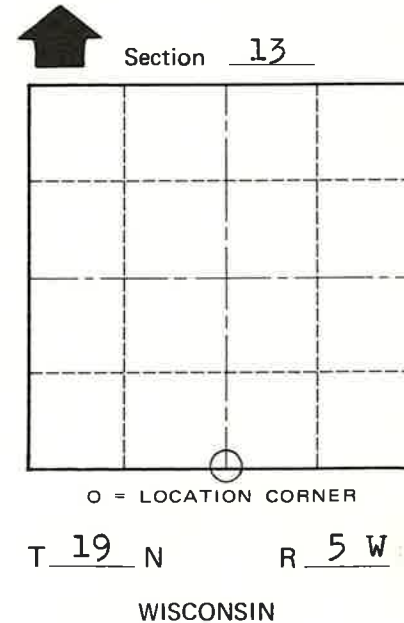
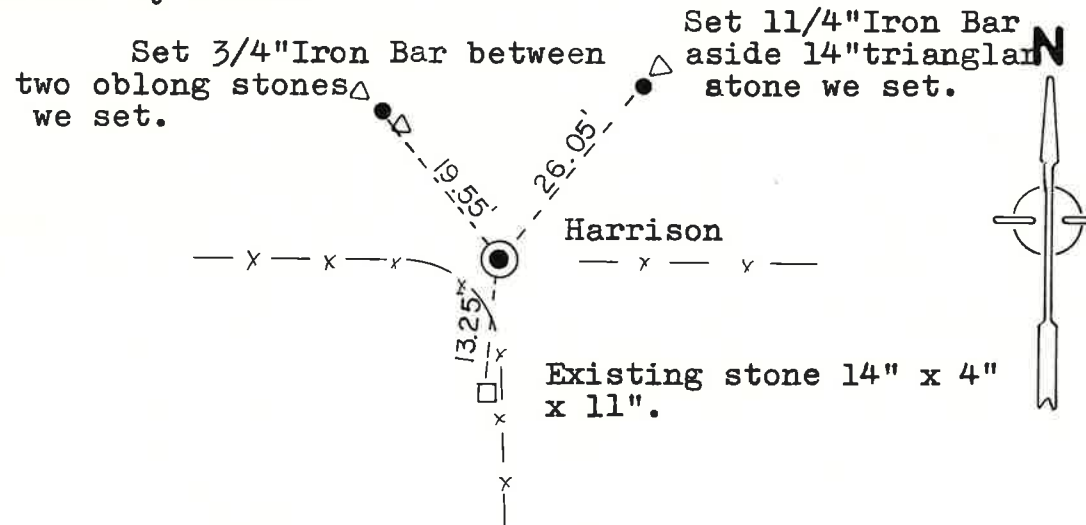
COUNTY SURVEYOR FORM NO. 1

Description of corner and witness monuments, references and accessories used to perpetuate the original or re-established location of this corner:

Set Harrison Monument up 2" surrounded by stones at intersection of fences.

Witnesses to corner location:

Douglas Malliet, Crew Chief  
W.C. Jung *W.C. Jung*  
A. Lueck *R.L.S. #1323*  
2/7/78



SURVEY CONTROL ORDER

Horizontal	_____
Vertical	_____

WISCONSIN COORDINATE SYSTEM

Corner	East (X)	North (Y)	Elevation (Z)	Zone
Control Sta. Name				

~~#####~~ or Town Little Falls  
 County of Monroe