

**U.S. PUBLIC LAND CORNER  
MAINTENANCE**

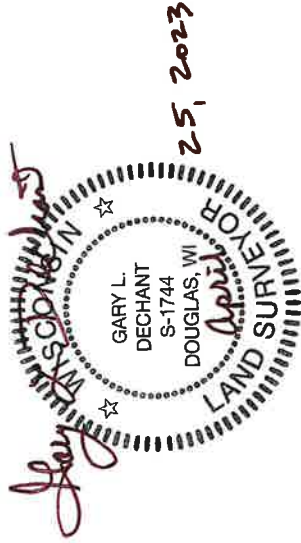
**#79 B**

**Corner ID: C1/4 Sec. 24, T19N-R5W  
21905242020**

<u>DATE</u>	<u>CREW</u>	<u>MONUMENT INFO</u>
April 21, 2023	Zachariah P. Dechant Gary L. Dechant	Found 1 1/4" round iron bar, steel post on east side, 15' south of new woven wire fence, 55' east of woven wire fence corner

- 1) Set 5/8"x24" round rebar center of trail 8' south of woven wire fence N80E 41.82
- 2) Set 5/8"x24" round rebar, 4' north of 4" Ash S12E 16.37
- 3) Set 5/8"x24" round rebar, 4' NE of 8" Black Cherry S27W 32.75'
- 4) Existing 3/4" round iron bar, 2' south of power pole West 66.15' (66.09')

Compass bearings  
Trees double blazed



21905242020

I, Gary L. Dechant, do hereby certify that on the 24th day of February 1984, I found (evidence) (~~no evidence~~) of the C<sup>1</sup>/<sub>4</sub> corner of Section 24, T 19 N, R 5 W Fourth Principal Meridian, and I re-established said corner according to the Wisconsin Statutes as shown and described hereon.

Dated this 27th day of Feb. 1984.

Gary L. Dechant

Registered Land Surveyor, S-1744

Title

History of corner establishment since Original Government Survey  
Adams, County Surveyor, set a stone here in April of 1884.

Description of corner evidence found:

Dug a hole approximately 4' deep at a 15+ foot radius with a bobcat tractor to look for Adam's stone. Did not find stone, but did use fence corner as it fits Adam's distance from the N<sup>1</sup>/<sub>4</sub> corner within 0.5' ±. This corner location also fits the half mile distance to the west and to the east very well.

We also dug for the stone Adam's shows a forty to the north with the bobcat but did not find it. Although we could not find the stone on record at the C<sup>1</sup>/<sub>4</sub> corner or the stone on record a forty north, we feel that the occupied fence corner at the C<sup>1</sup>/<sub>4</sub> corner is where Adam's stone once layed as it does fit other field evidence so well.

Description of corner and witness monuments, references and accessories used to perpetuate the original or re-established location of this corner:

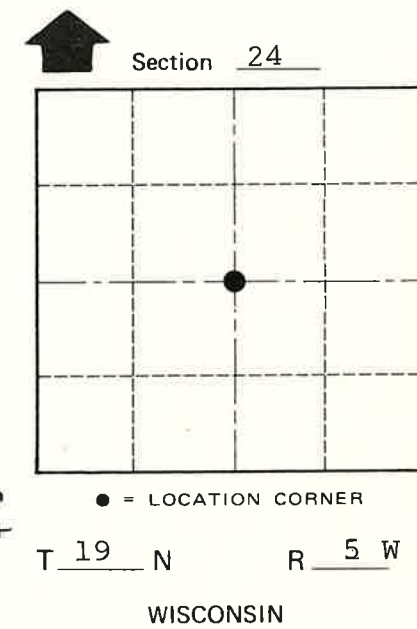
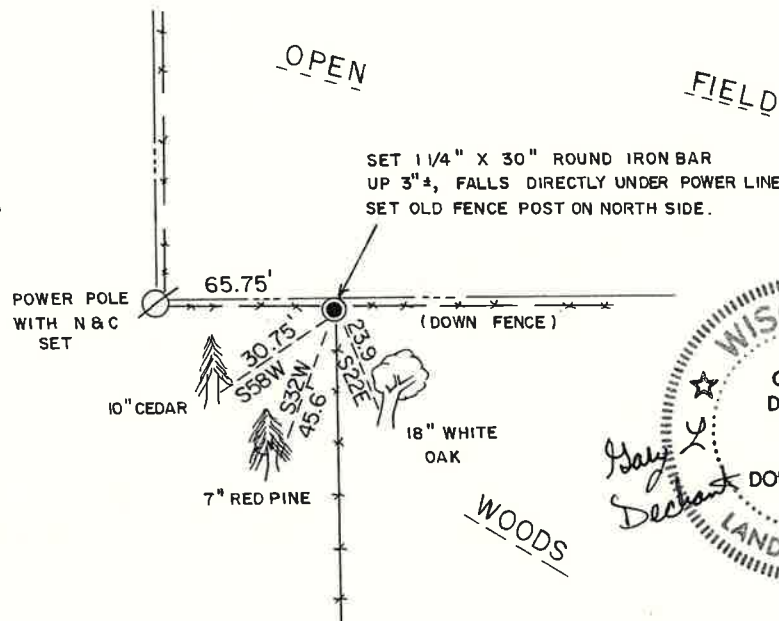
Witnesses to corner location:

Lawrence A. Feddersen

Gary L. Dechant

See Reverse Side For Maintenance

WOODS



(Trees double blazed with N&C's set)

COUNTY SURVEYOR FORM NO. 1

Approved: **HARLEY A. SIME**  
**MONROE CO. SURVEYOR**

Lawrence A. Feddersen  
S-1226  
TOMAH  
WIS.  
Feb 27, 1984  
LAND SURVEYOR

GARY L. DECHANT  
S-1744  
CAMP  
DOUGLAS, WI  
Feb 27, 1984  
LAND SURVEYOR

SURVEY CONTROL ORDER

Horizontal	_____
Vertical	_____

WISCONSIN COORDINATE SYSTEM

Corner	East (X)	North (Y)	Elevation (Z)	Zone
Control Sta. Name				

City, Village or Town Little Falls  
County of Monroe