

U. S. Public Land Corner

86

Maintenance

Corner: S1/4 Sec. 22, T18N-R4W

2180422002D

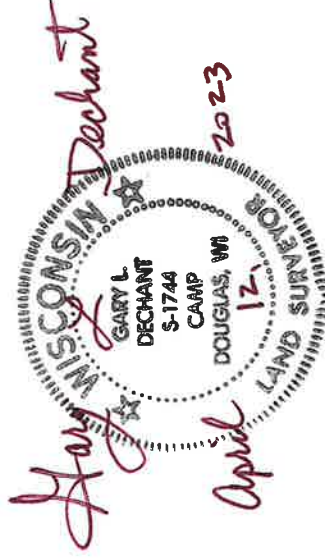
Date	Crew	Monument type
April 10, 2023	Zachariah P. Dechant Gary L. Dechant	Found TCP monument in remnants of fence corner, on east slope, approx 42' east of newer north-south fence, verified with 1996 bearing trees/stumps, set new sign 1' east

References:

- 1) Set 5/8"x24" round rebar, 4' south of 3" Hickory
- 2) Set 5/8"x24" round rebar, on south side of 1 1/2"x4' flat stone
- 3) Set 5/8"x24" round rebar, on east side of small rock ledge
- 4) Set 5/8"x24" round rebar, 4' NE of Hickory sapling

Bearing	Distance
N5W	21.25'
N35E	19.82'
S15E	19.44'
S10W	17.63'

Compass bearings
Trees double blazed



I, Lawrence A. Feddersen, do hereby certify that on the twentythird day of April 1996, I found ~~(evidence)~~ ~~(no evidence)~~ of the South 1/4 corner of Section 22, T 18 N, R 4W Fourth Principal Meridian, and I re-established said corner according to the Wisconsin Statutes as shown and described hereon.

Dated this 29 day of April 1996.

Lawrence A. Feddersen
Registered Land Surveyor
Title

History of corner establishment since Original Government Survey

No record of re-established corner.

Description of corner evidence found:
Accepted a 3 way downed fence as best possible evidence.

**See Reverse Side
For Maintenance**

COUNTY SURVEYOR FORM NO. 1

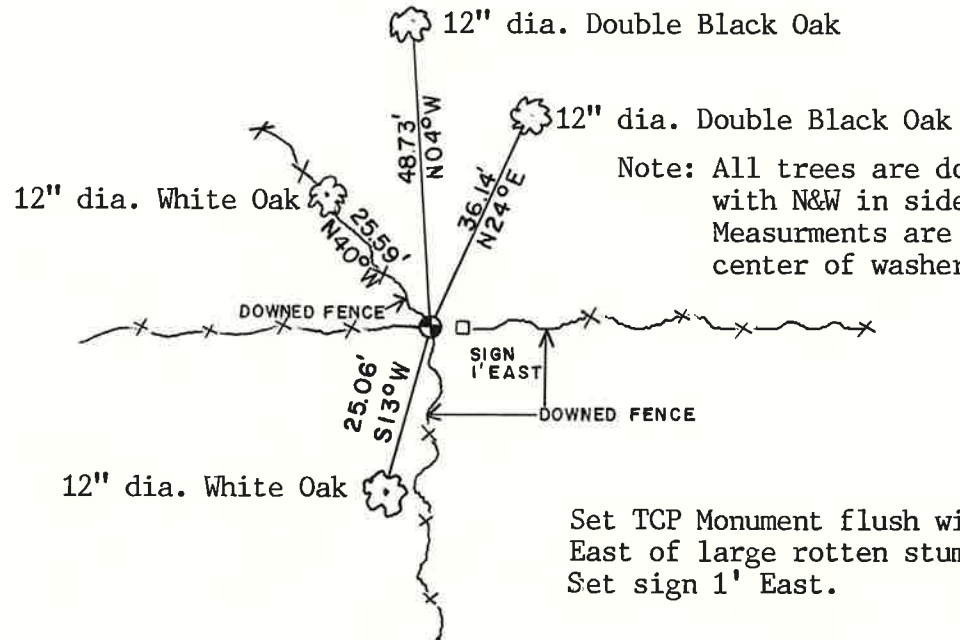
Description of corner and witness monuments, references and accessories used to perpetuate the original or re-established location of this corner:

Witnesses to corner location:

Lawrence A. Feddersen

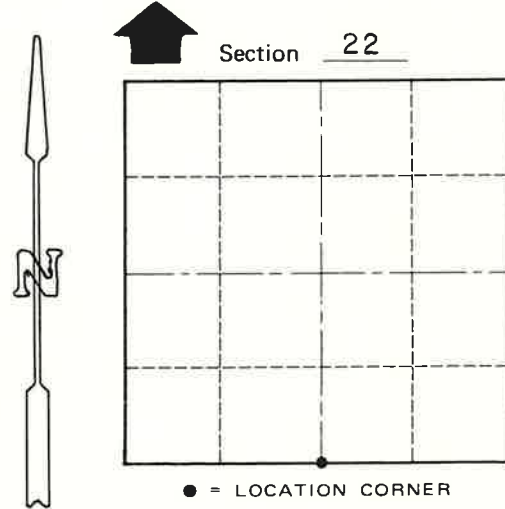
Timothy J. Jeatran

Harold A. Haberlin



Note: All trees are double blazed with N&W in side base. Measurements are to nail in center of washer.

Set TCP Monument flush with ground 1' East of large rotten stump with wire in it, Set sign 1' East.



T 18 N R 4W
WISCONSIN

SURVEY CONTROL ORDER

Horizontal	_____
Vertical	_____

WISCONSIN COORDINATE SYSTEM

Corner	East (X)	North (Y)	Elevation (Z)	Zone
Control Sta. Name				

~~City, Village or~~ Town of Sparta
County of Monroe