

**U. S. Public Land Corner  
Maintenance**

# 58

Corner: W1/4 Sec. 14, T16N-R4W

21604152000

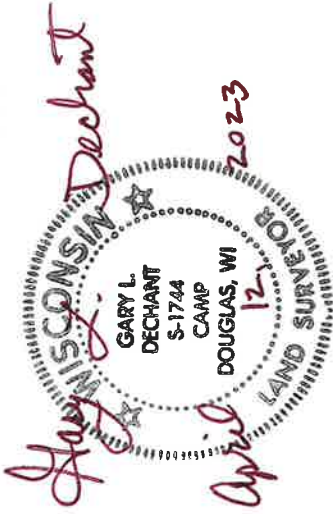
<u>Date</u>	<u>Crew</u>	<u>Monument type</u>
April 10, 2023	Zachariah F. Dechant Gary L. Dechant	Found Harrison monument on south edge of paved driveway at 8304 CTH "J", concrete nails 1' north, 1' west, Approx. 50' NW of PI of CTH "J"

References:

- 1) Set 5/8"x24" round rebar, 3' west of 10" Spruce
- 2) Set 5/8"x24" round rebar, 6' east of (14" at base) of Arborvitae
- 3) Set 5/8"x24" round rebar, in field down 12" SE of road
- 4) Set 5/8"x24" round rebar, 15' NE of 36" Maple

Compass bearings

Harrison and reference markers 1 & 4 set on straight line



I, Bryan H. Meyer, do hereby certify that on the 17<sup>th</sup> day of October 1986, I found (evidence) ~~no evidence~~ of the West 1/4 corner of Section 14, T 16 N, R 4 W Fourth Principal Meridian, and I re-established said corner according to the Wisconsin Statutes as shown and described hereon.

Dated this 22nd day of Dec. 1986.

Bryan H. Meyer  
Deputy County Surveyor  
Title

History of corner establishment since Original Government Survey

O. R. Dahl was here in October of 1871. Webster Kenyon was here in May of 1883. Harley Sime was here in October of 1963 and shows a monument at this corner. Mr. Sime was here again in May of 1975 and calls for an existing 2" iron pipe.

Description of corner evidence found:

I found a 1 1/2" iron pipe at the P. I. of C.T.H. "J", down 1" in a gravel driveway. I checked the distance from the pipe to the R/W of S.T.H. "27" and it agrees with Mr. Sime's distance, therefore, I accepted the pipe as the corner.



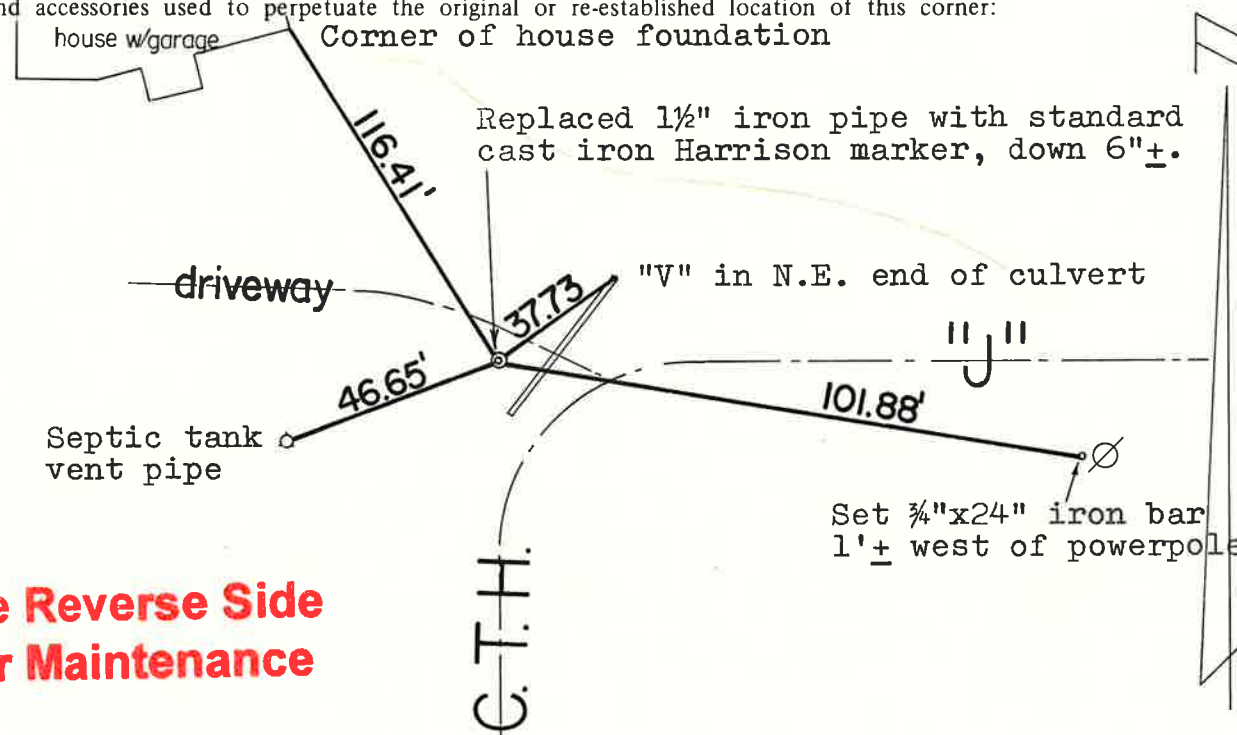
COUNTY SURVEYOR FORM NO. 1

Description of corner and witness monuments, references and accessories used to perpetuate the original or re-established location of this corner:

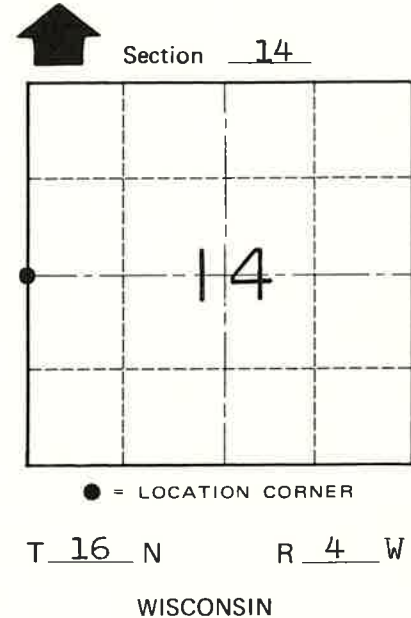
Crew: Meyer, Sime  
Date: October 17, 1986  
Weather: Overcast, 45°±  
Witnesses to corner location:

Bryan Meyer

Gary Sime



**See Reverse Side For Maintenance**



SURVEY CONTROL ORDER

Horizontal	_____
Vertical	_____

WISCONSIN COORDINATE SYSTEM

Corner	East (X)	North (Y)	Elevation (Z)	Zone
Control Sta. Name				

~~City Village or~~ Town of Leon  
County of Monroe